



**Greenville**  
NORTH CAROLINA

# Tar River Park Master Plan

---



---

*Find yourself in good company*

# *Project Goals*

---

1. Citizen Recommendations
2. Concerns and Issues
3. Develop Program Elements
4. Determine the best use of the park land for all users



## Neighborhood Park

- Approximately 16 Acres
- Off Leash Dog Park is 1 acre



**Greenville**  
NORTH CAROLINA

# Typical Neighborhood Park



**Greenville**  
NORTH CAROLINA



*Find yourself in good company*

*Find yourself in good company*

# EXISTING AMENITIES



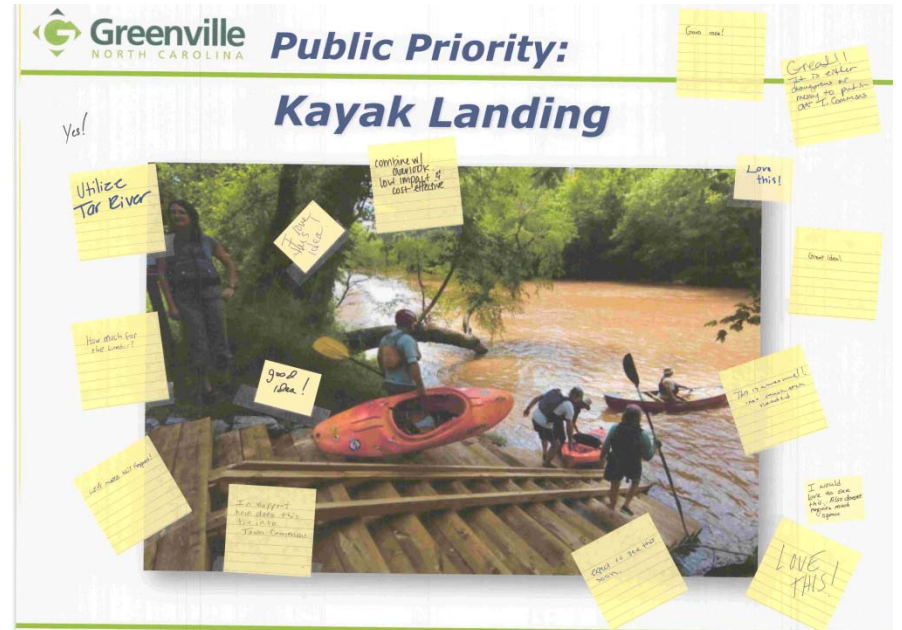
# Frisbee Golf = 10 Acres



## Comments

This was the most desired program element because: (1) it is low maintenance, and a great way to preserve open space, and (2) It would be a low maintenance element and appeal to a wide range of users.

# Kayak Landing

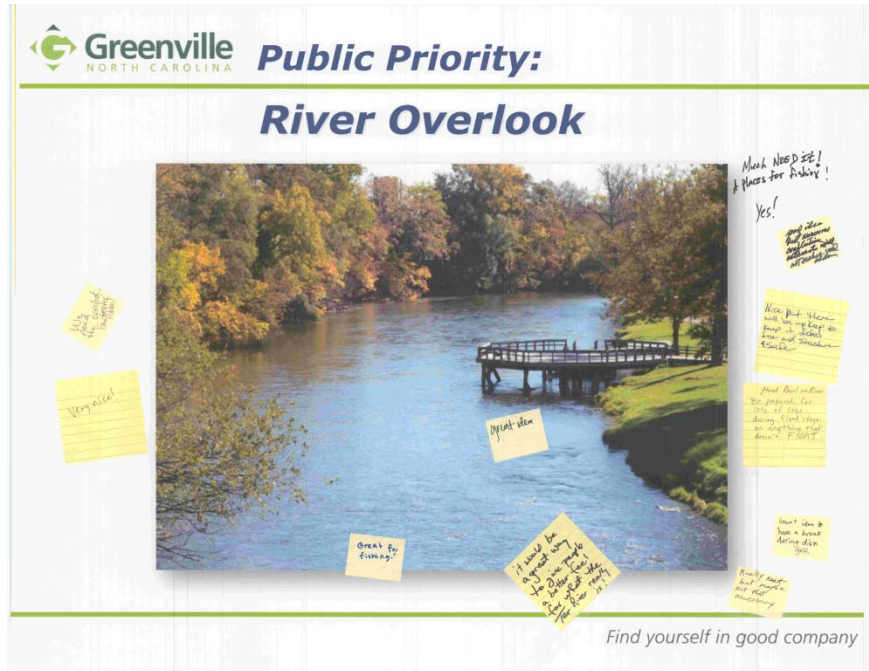


*Find yourself in good company*

## Comments

The consensus from the attendees was that this program element is a great idea. Many felt that this would be a wonderful way to connect park users to the river. Combined with an overlook, a kayak landing would be a cost efficient way to provide access to the river.

*Find yourself in good company*

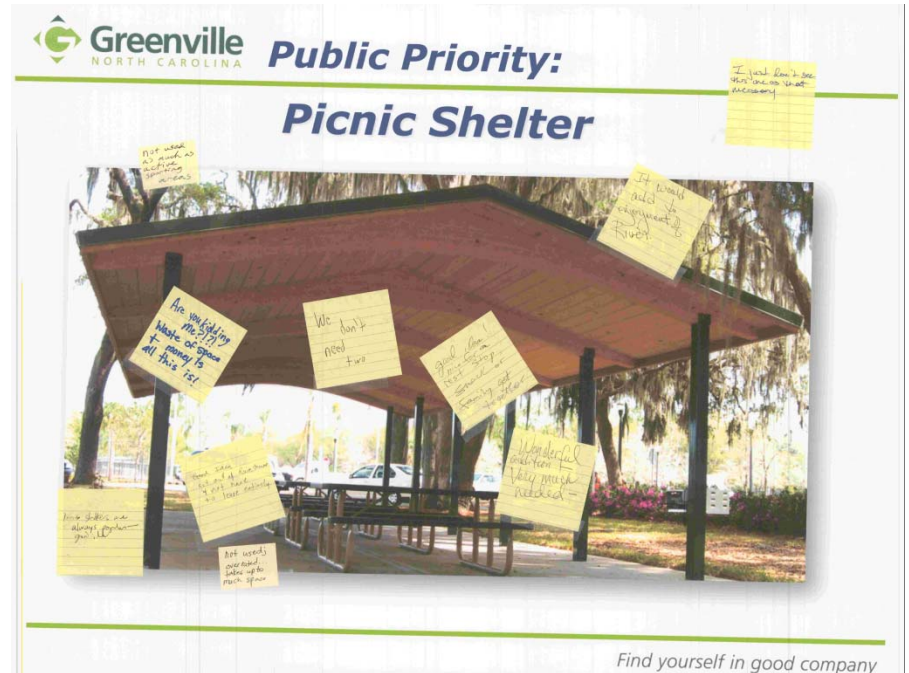


## Comments

The majority of the attendees thought that this element would be a great addition to the proposed park. The overlook would be a great way to provide passive access to the river.



# Picnic Shelter



## Comments

The consensus from the group that it would be a great added amenity to the park, and it would be very popular.

# Public Restroom Facility



## Comments

The attendees were unanimous in their support for a public restroom. This facility would serve many users including the South Tar River Greenway, and the off leash dog park, as well as users of future park elements. As the park grows and amenities are added, a restroom facility will be essential.



## Comments

The attendees highly desired open space as a low maintenance, and informal park element. Many argues that the disk golf course could be used double as open space when not in use. It was suggested that time limits be put on the use of the disk golf course so that the area could be used as open space.

# Playground Areas



Greenville NORTH CAROLINA **Public Priority:**

## Adventure Playground

Are you challenging? Not sure if both are good ideas. When does the program take place and how often?

Don't like the color.

Smaller? Would impact? Like it but need details.

Boat!

Find yourself in good company

### Comments

Because the proposed park is in a neighborhood that primarily caters to college students, many attendees were against a playground as a park element. However, the Tar River Legacy Master Plan recommended a playground in this area, a request that was strongly supported by attendees of the public input sessions for that project.

INTRODUCTION

GREENVILLE & ITS RIVER

PLAN DEVELOPMENT

THE PLAN

IMPLEMENTATION

## 4. TAR RIVER/UNIVERSITY

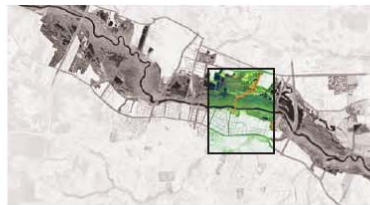
4.9: TAR RIVER/UNIVERSITY ENLARGEMENT



South of the River, to the east of the Uptown, lie historic neighborhoods bounded by the River and East Carolina University. As a result of the flood of 1999, there are a number of vacant City-owned parcels in this area. The Legacy Plan recommends that these properties become part of a riverfront system of parks.

The Legacy Plan identifies several key neighborhood-supportive park uses for the riverfront in this area, including healing/sculpture gardens, River overlooks, open space, and playgrounds. The greenway along the Tar River would be enhanced to embrace the culture and heritage of the riverfront, through the addition of art, wayfinding, interpretation, and beautification of the landscape. Although the existing greenway is located along the Tar River, the water is often hidden from view. The Legacy Plan recommends that selective areas be cleared to open vistas of the River.

It is important to connect the historic, River-adjacent communities and their residents to both the River and to nature-based programming north of the River. A bike / pedestrian crossing across the River is recommended to provide direct access between the neighborhood and University areas south of the River and River Park North. The Plan identifies key streets that can connect the Tar River/University neighborhoods to the River. These would be enhanced with green street improvements such as street trees and low-impact stormwater management strategies. There are several other streets that terminate at the River and serve as trailheads to the riverfront area.



- 1 Camping
- 2 Trail connections
- 3 Healing/sculpture gardens
- 4 River overlooks
- 5 Playground
- 6 Green streets

MEDITATIVE  
**DYNAMIC**  
INTERACTIVE

## *General Comments*

1. Safety (for area residents) will be an issue with more users coming to the proposed park.
2. Lack of parking is a major issue. Added amenities will only make it worse.
3. There is a perceived danger in disc golf and other users, i.e. walkers/joggers, gardeners, dog park users etc.
4. The river is littered with trash and debris and perceived to be dirty.
5. The dog park needs to be expanded and needs additional amenities.

## *General Comments*

6. “Expand and exploit” river access.
7. There needs to be a distinct separation; a buffer between disc golf and trail users.
8. Proposed storm sewer ditch will take up valuable land.
9. Consider thinning out underbrush and open views to the river.

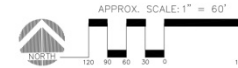
**TAR RIVER PARK**  
GREENVILLE RECREATION & PARKS  
APRIL 2015

**CONCEPT PLAN**



**LEGEND**

- A DISK GOLF COURSE - 9 HOLES
- B RESTROOM FACILITIES
- C INFORMAL OPEN SPACE / GREEN
- D RIVER OVERLOOK
- E KAYAK LANDING
- F PICNIC SHELTER
- G PLAYGROUND
- H NEW PARKING AREA - 38 SPACES
- I DOG PARK EXPANSION
- CITY OWNED PROPERTY LINE
- NEW SIDEWALK
- \* NEW DOG PARK ENTRANCE
- EXISTING TREE
- NEW SCREENING







*Find yourself in good company*

---

# *General Comments*

1. Major safety issue; GDGA does not support a disc golf course in this area.
2. Find an alternate location near ECU for disc golf; perhaps the old landfill.
3. Conflict between disc golf course and children, dogs, and trail users.
4. Buffer should be adequate to separate disc golf course from other park users.
5. Playground area should be in the open area away from river's edge and closer to restrooms.
6. Some would like to keep large open area natural; perhaps three holes to the far west for disc golf.
7. The drainage ditch is a hazard; public works should consider piping storm water to river.
8. Construction and hard cost is an issue. Who will build future disc golf course.

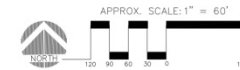
**TAR RIVER PARK**  
GREENVILLE RECREATION & PARKS  
JUNE 2015

**CONCEPT - B**



**LEGEND**

- A TRADITIONAL PLAYGROUND AREA
- B ADVENTURE PLAYGROUND AREA
- C NEW RESTROOM FACILITY
- D RIVER OVERLOOK
- E KAYAK LANDING
- F PICNIC SHELTER
- G TYPICAL PAD W/ PICNIC BENCHES
- H INFORMAL PLAY AREA / EVENT SPACE
- I DOG PARK EXPANSION
- J NEW PARK AREA
- K NATURAL MEADOW
- CITY OWNED PROPERTY LINE
- NEW SIDEWALK
- ✱ NEW DOG PARK ENTRANCE
- EXISTING TREE





*Find yourself in good company*