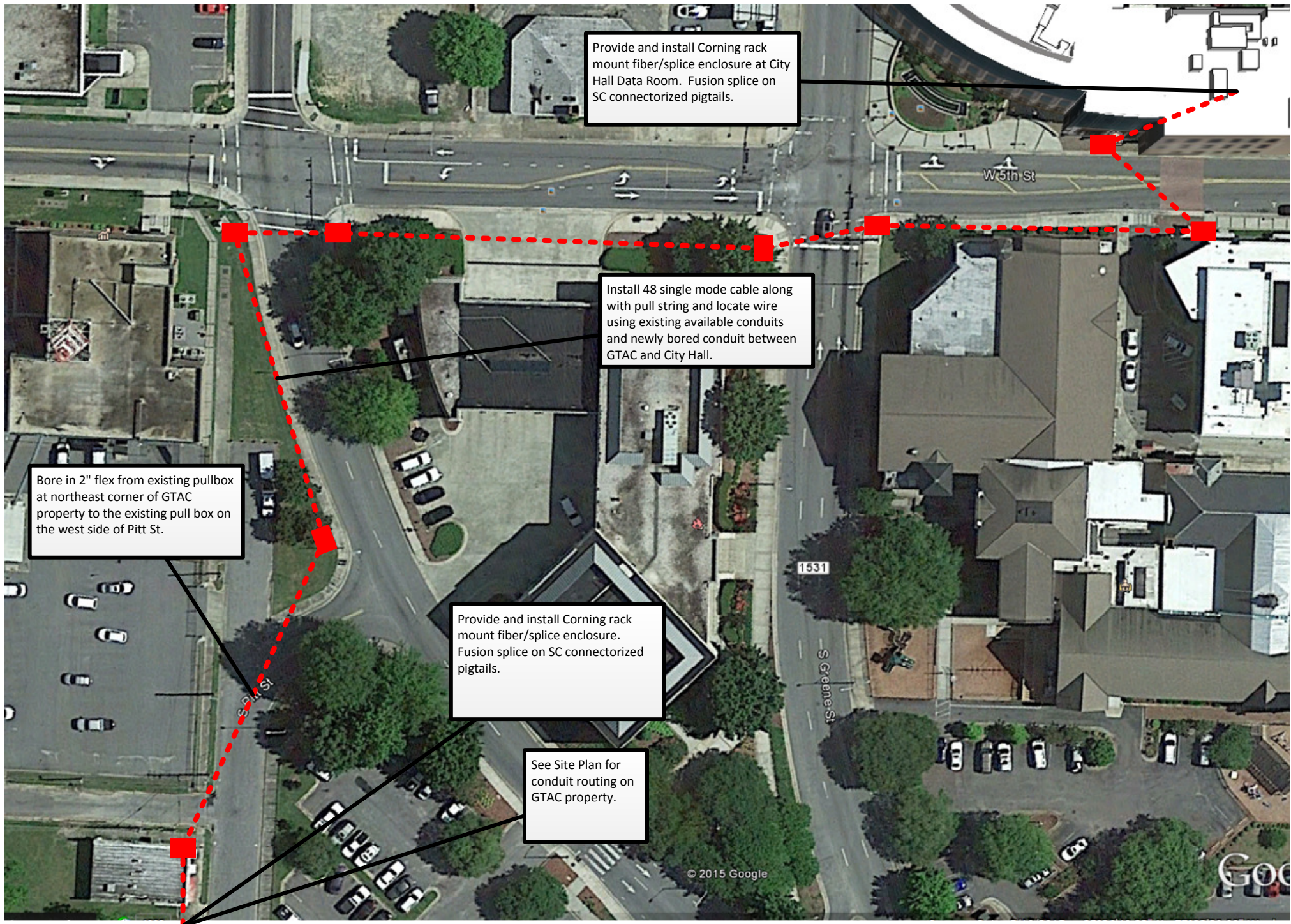


# Block Plan





# Site Plan

See Block Plan

Tel/Data room - Provide and install Corning rack mount fiber/splice enclosure. Fusion splice on SC connectorized pigtails.

(2) Existing 4" conduits from Tel/Data room to pullbox at sidewalk.

Existing 24"x36" Quazite pullbox

Bore across Pitt St.

Install 48 single mode cable along with pull string and locate wire using existing available conduits and newly bored conduit between GTAC and City Hall.

(2) Existing 2" conduits between the two quazite pull boxes

