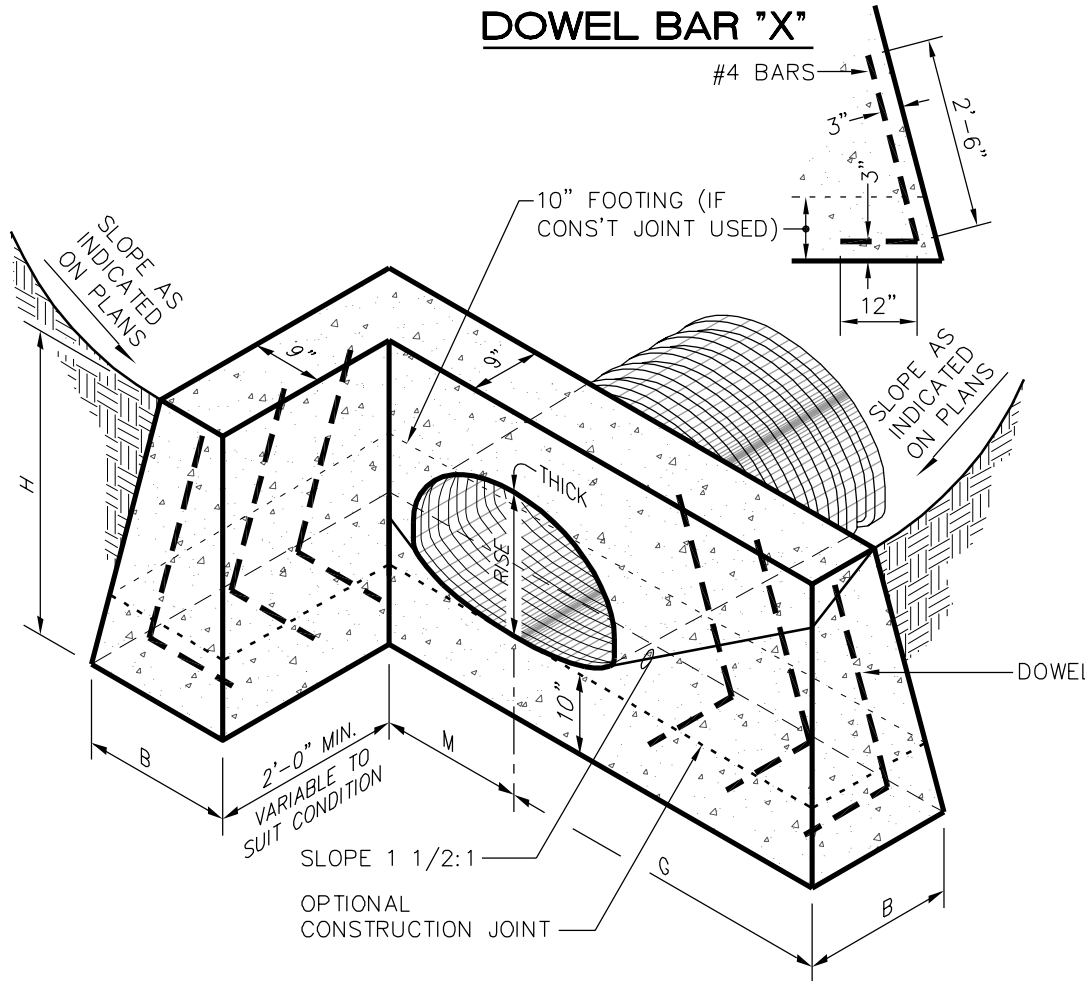


DOWEL BAR "X"



REINFORCING QUANTITIES										
SPAN	18"	22"	25"	29"	36"	43"	50"	58"	65"	72"
BARS	X	←								→ X
QTY.	5	5	5	6	6	7	7	7	8	8
LBS.	12	12	12	14	14	16	16	16	19	19

DIMENSIONS AND CONCRETE QUANTITIES							
COMMON DIMENSIONS USING C.M. ARCH PIPE							TOTAL CONC.
SPAN	RISE	THICK	H	B	G	M	CU. YD.
18"	11"	.064	2'-7"	1'-4"	2'-5"	1'-0"	0.604
22"	13"	.064	2'-9"	1'-5"	2'-9"	1'-2"	0.712
25"	16"	.064	3'-0"	1'-6"	3'-3"	1'-4"	0.877
29"	18"	.079	3'-2"	1'-7"	3'-7"	1'-6"	1.015
36"	22"	.079	3'-6"	1'-9"	4'-3"	1'-9"	1.306
43"	27"	.079	3'-11"	2'-0"	5'-1"	2'-1"	1.796
50"	31"	.109	4'-3"	2'-2"	5'-9"	2'-4"	2.206
58"	36"	.109	4'-8"	2'-4"	6'-7"	2'-8"	2.794
65"	40"	.138	5'-0"	2'-6"	7'-4"	3'-0"	3.387
72"	44"	.138	5'-4"	2'-8"	8'-0"	3'-3"	3.995

QUANTITIES BASED ON 2'-0"

18" THRU 72" PIPE ARCH PIPE

NOTES:

- See Std. detail No. 630.01 for general notes.



PUBLIC WORKS DEPARTMENT
1500 Beatty Street
Greenville, North Carolina 27834

CITY OF GREENVILLE, N.C.
USE WITH THE CITY OF GREENVILLE, N.C. STANDARD SPECIFICATIONS ONLY

www.greenvillenc.gov

No.	Date	Description
1	9/16/11	APPROVAL

Scale: not to scale	Sheet #: 1 of 1	Detail #: 631.01
------------------------	--------------------	---------------------

STD. CONC. "L" ENDWALL FOR SINGLE PIPE CULVERTS