

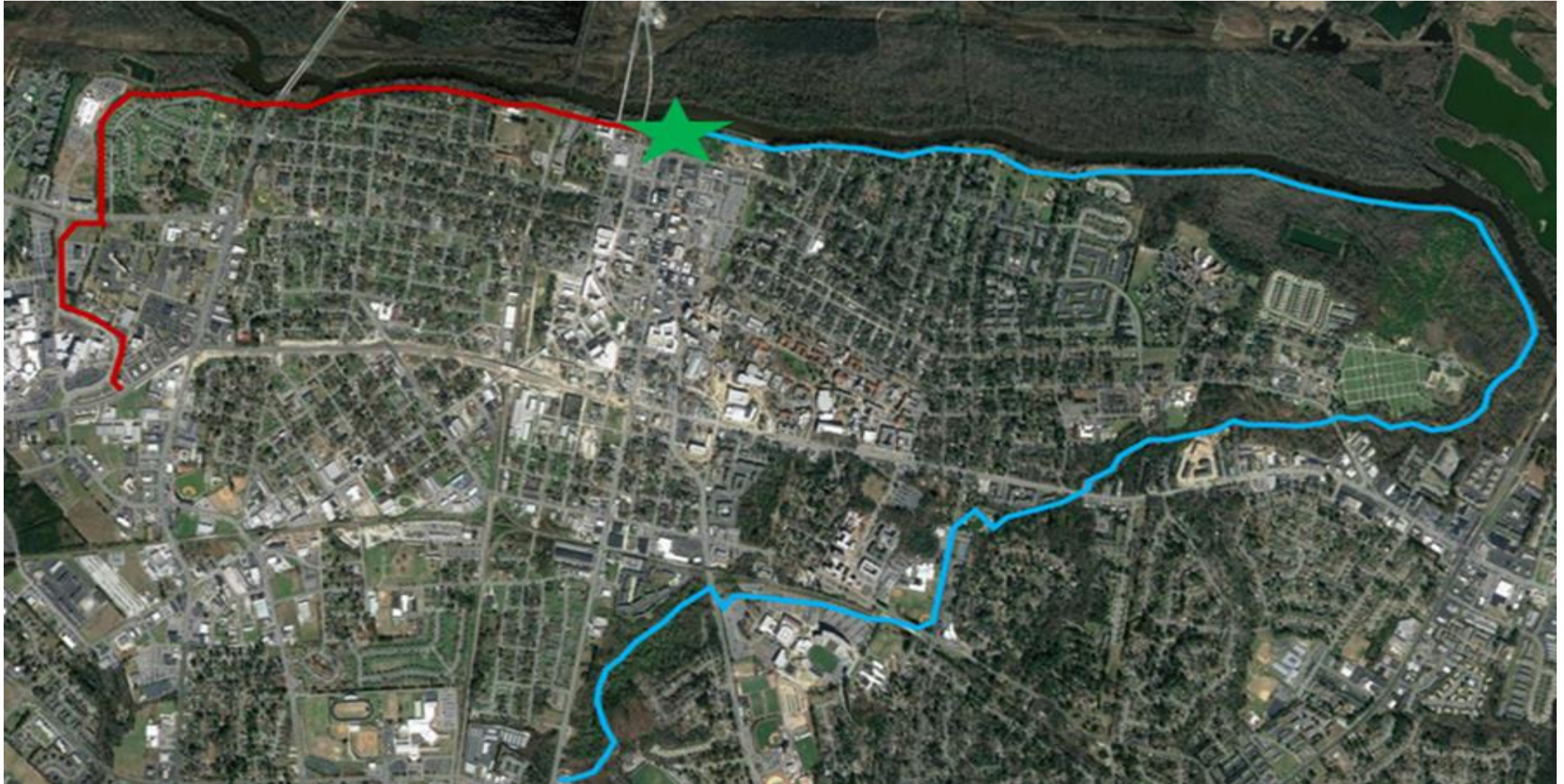
## **Trail Connection From Town Common to River Park North & Wildwood Park**



## Trail Connection From Town Common to RPN & Wildwood

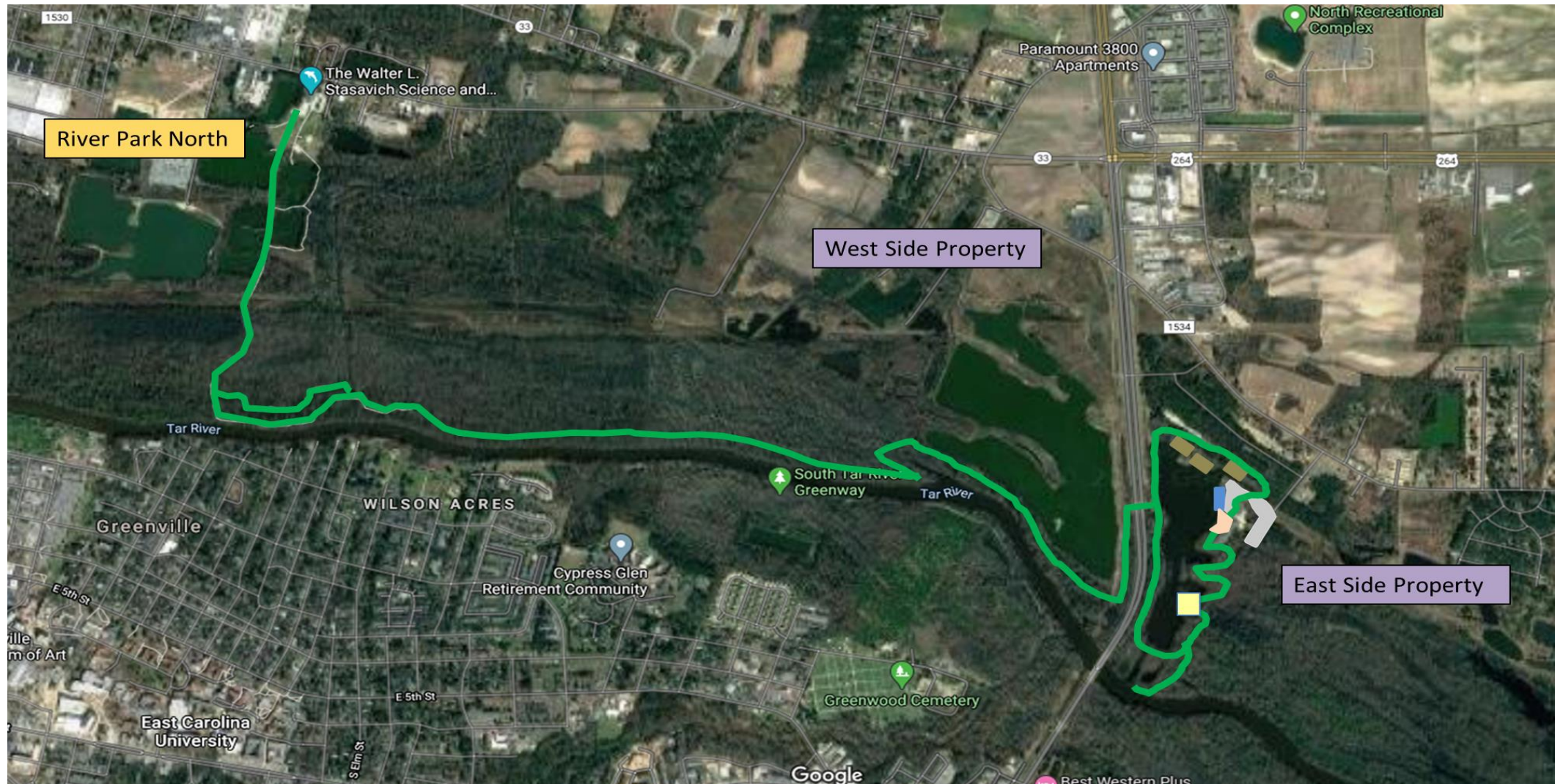
- Pedestrian Access From Town Common to North Greene Street:
  - Utilizing the Existing Greene Street Bridge
  - Existing Lanes Reduced from Two Lanes Down to One
  - Include a Bike Lane and a Walk Lane Separated by a Bollard System
- Trail Connection From North Greene Street to River Park North & Wildwood Park
  - Primitive Trail, Boardwalk, Canopy Walk







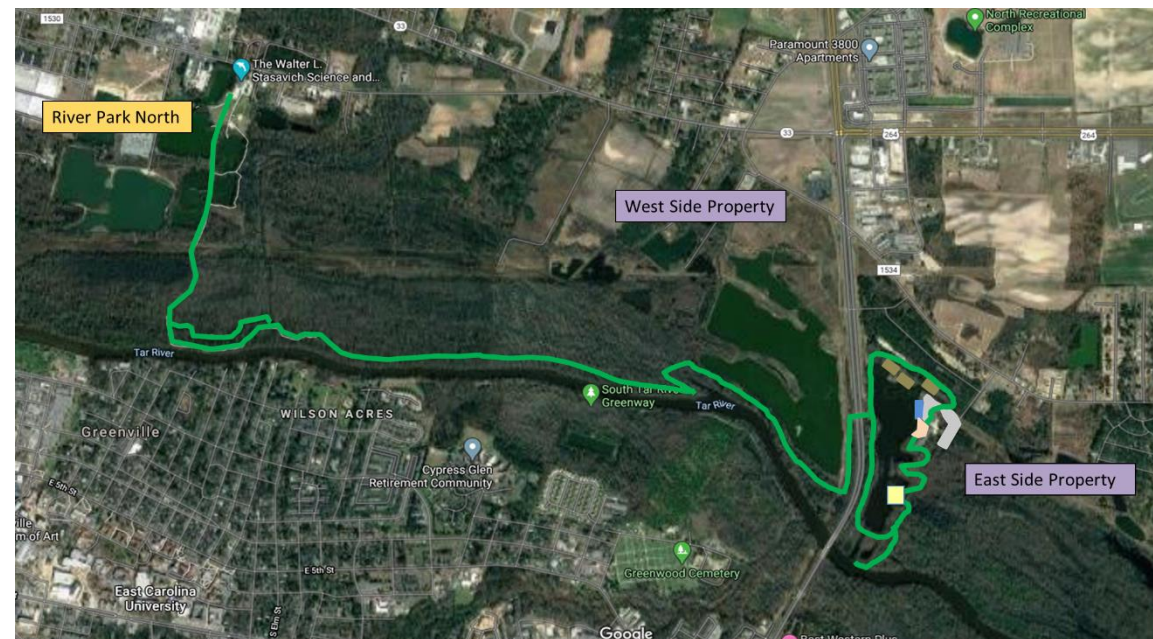
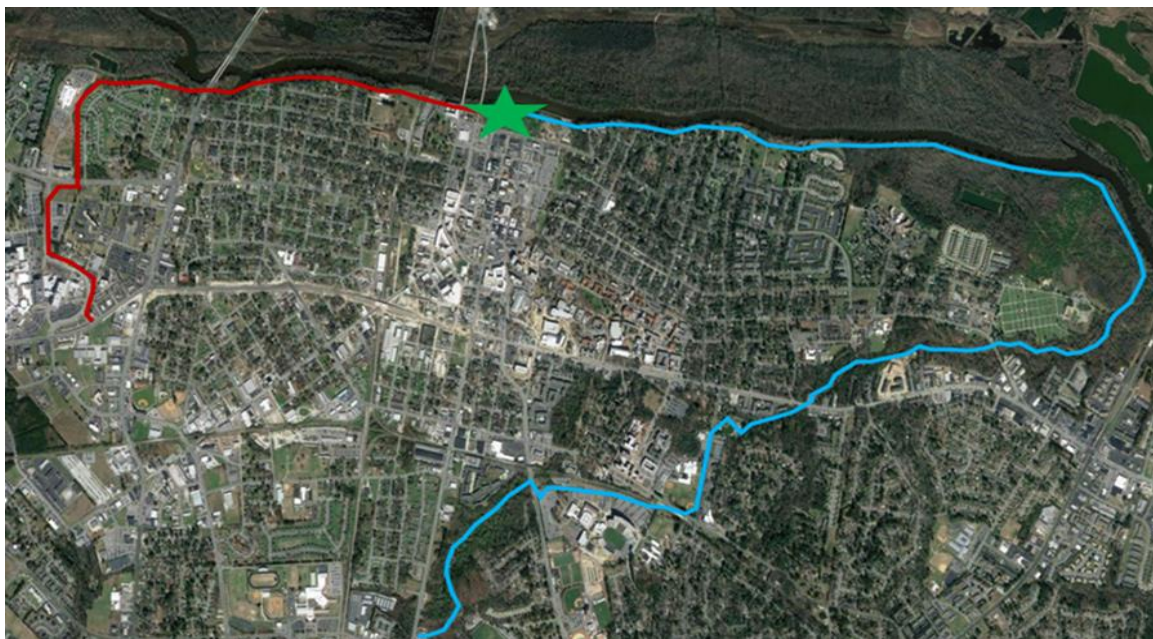
## Developing Wildwood Park





## Trail Connection From Town Common to RPN & Wildwood

**No Existing  
Connection North to  
South**

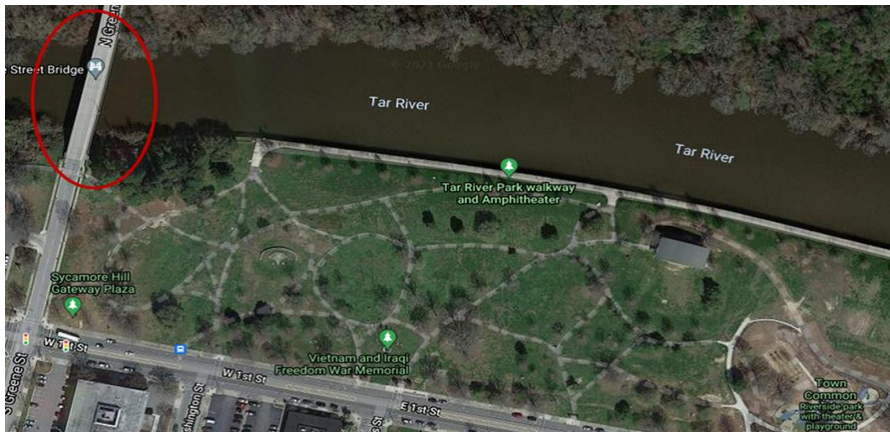




## Trail Connection From Town Common to RPN & Wildwood









## Trail Connection From Town Common to RPN & Wildwood



**Primitive Trail**

**Boardwalk**

