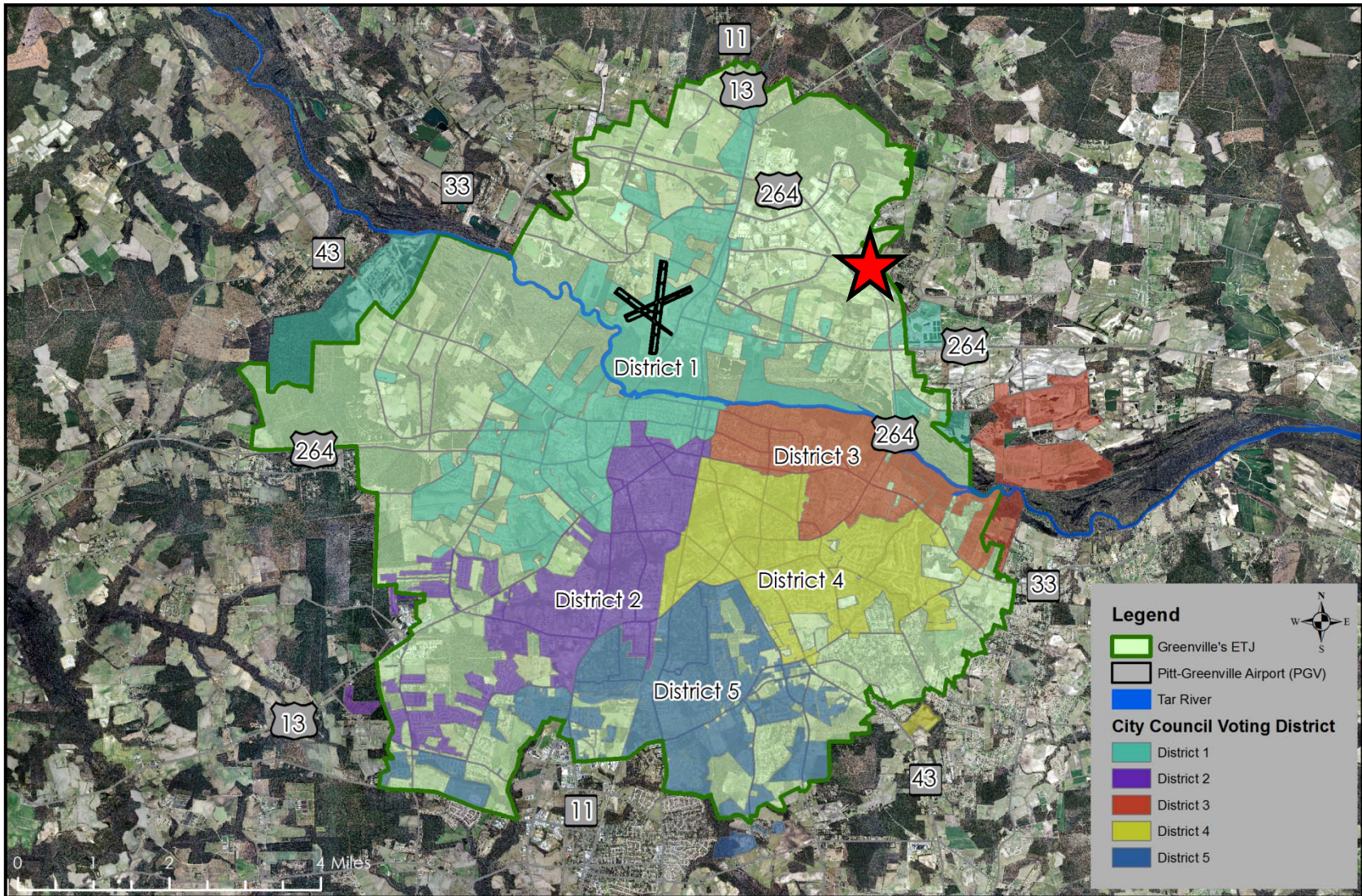


1.16.14

# City Council Meeting

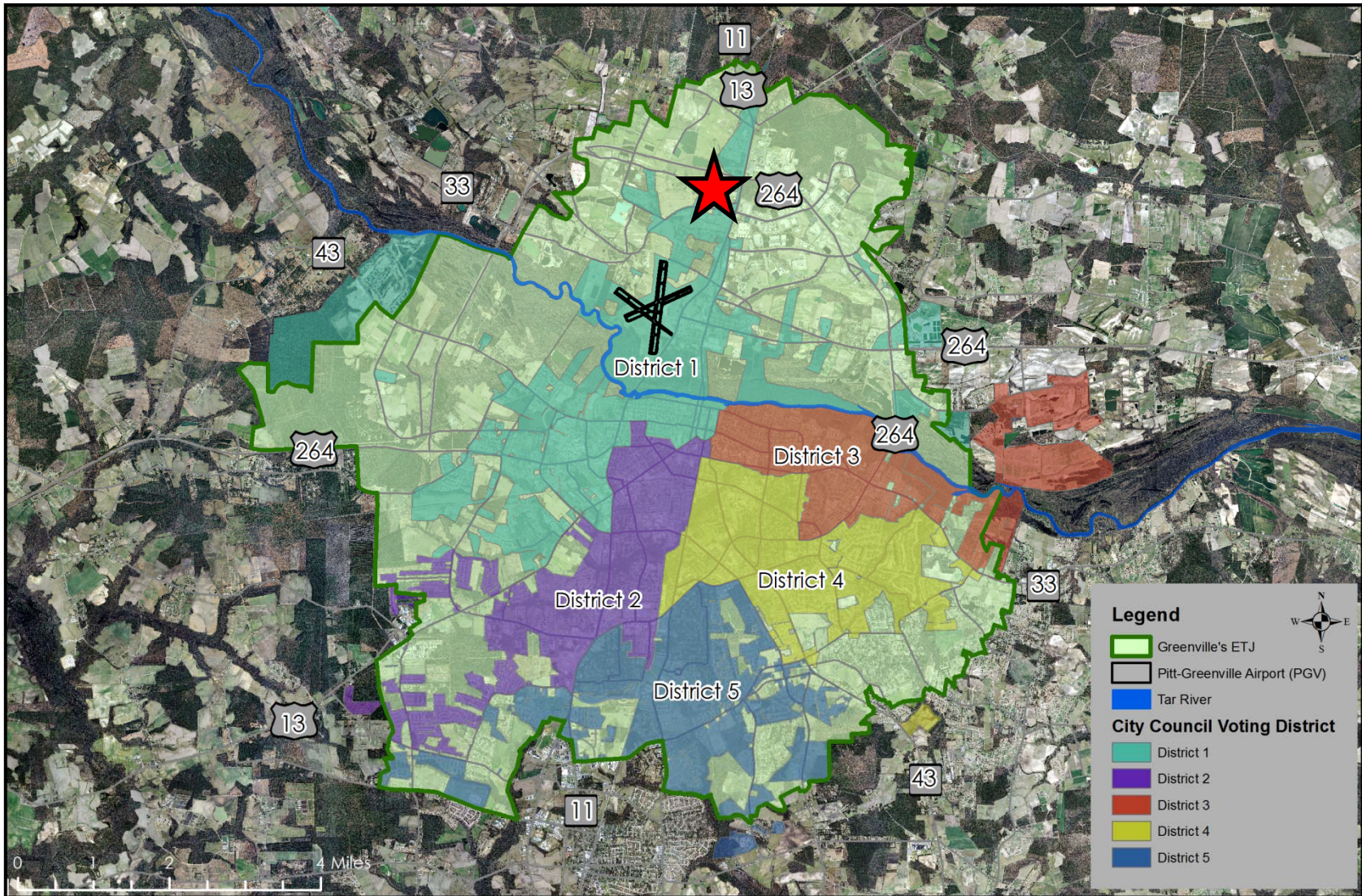
**Item 3:** Ordinance to annex Lakeview Industrial Park, Lot 8, involving 2.1068 acres located west of Sapphire Court and 280+/- feet north of Diamond Drive



*Find yourself in good company*



**Item 4:** Ordinance requested by Stow Management, Incorporated and Stephen M. Harrington to rezone 25.876 acres located between Martin Luther King, Jr. Highway and Staton House Road and 380+/- feet west of North Memorial Drive from IU (Unoffensive Industry) to CH (Heavy Commercial)





*Find yourself in good company*



---

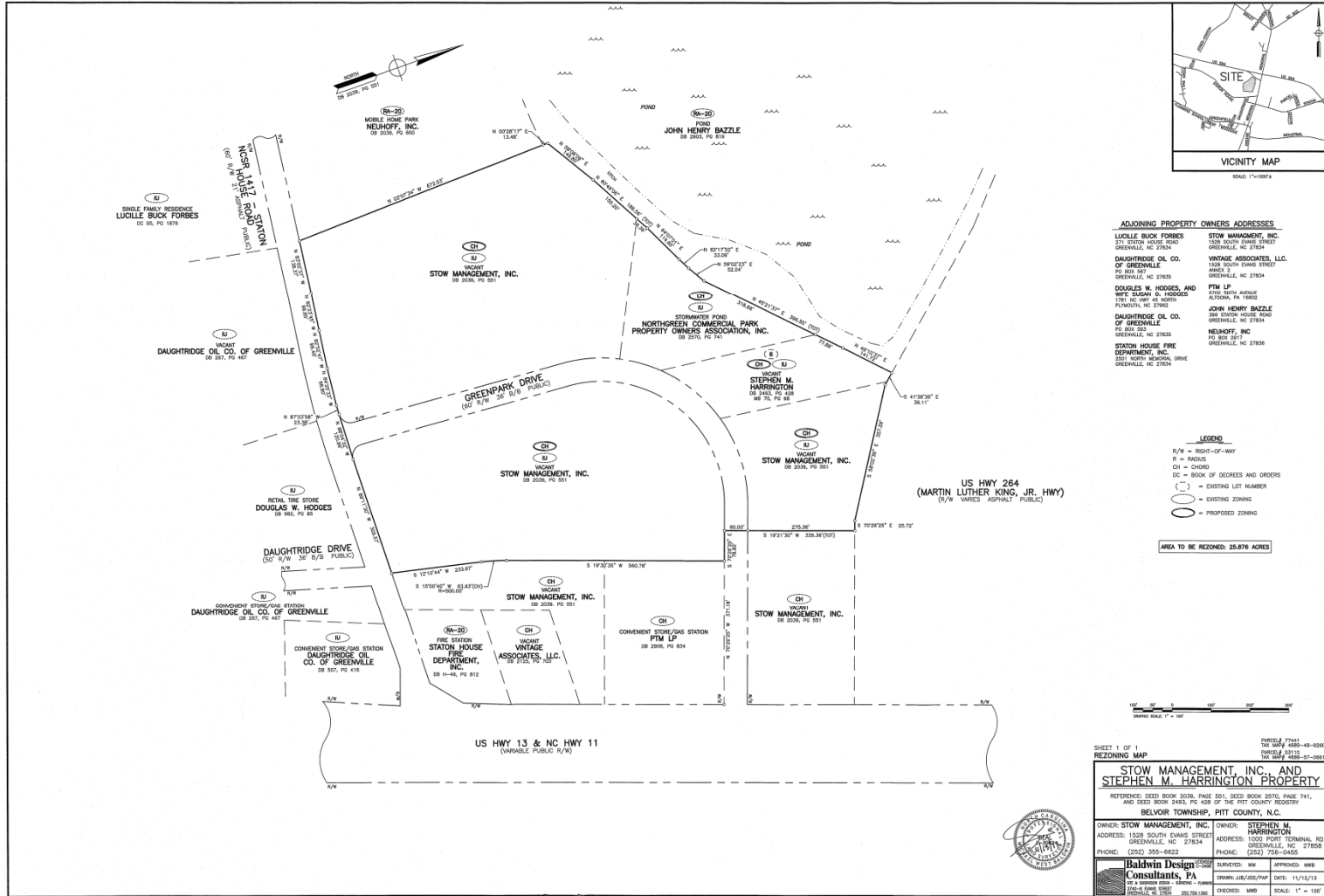
*Find yourself in good company*



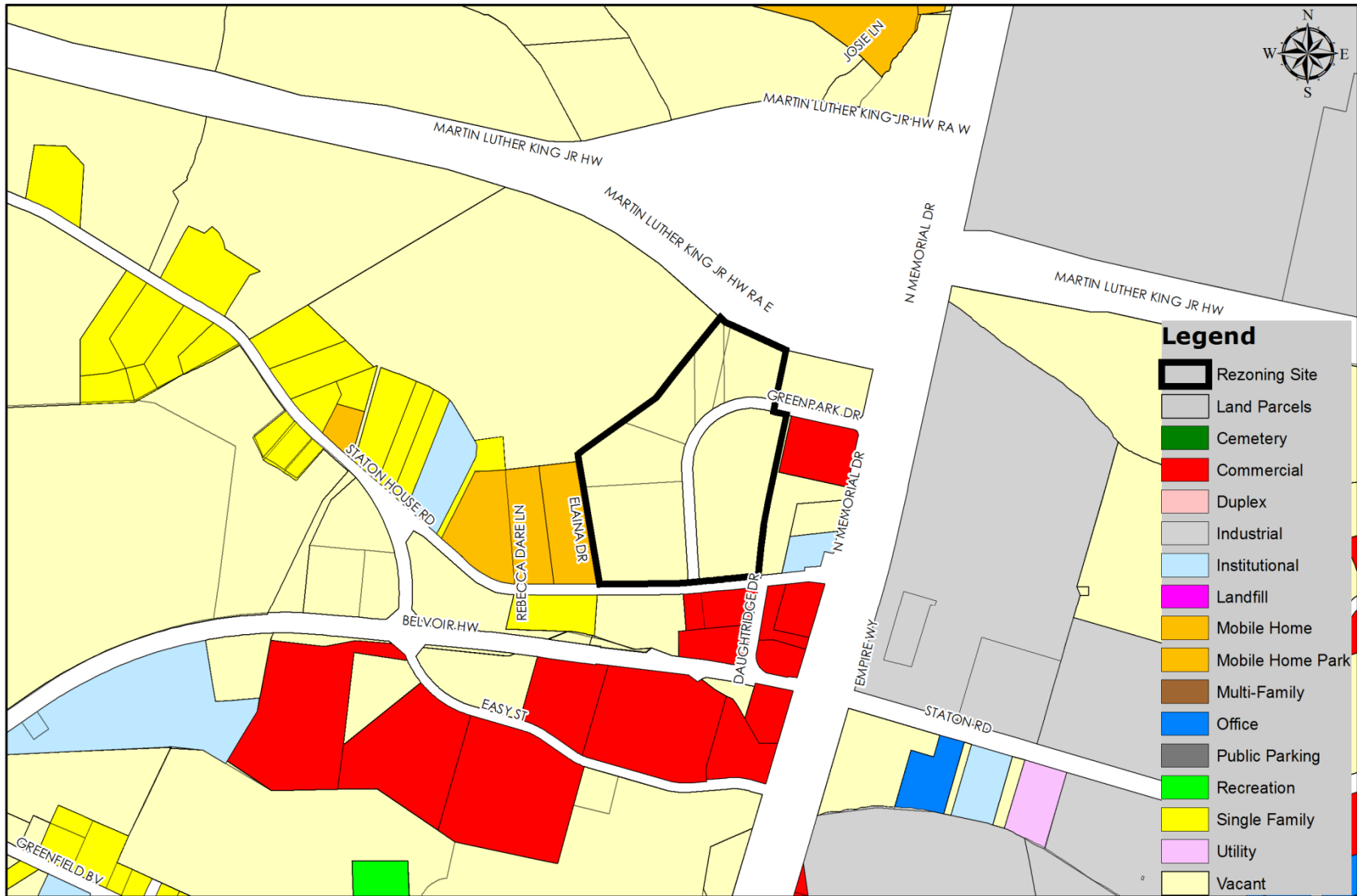


---

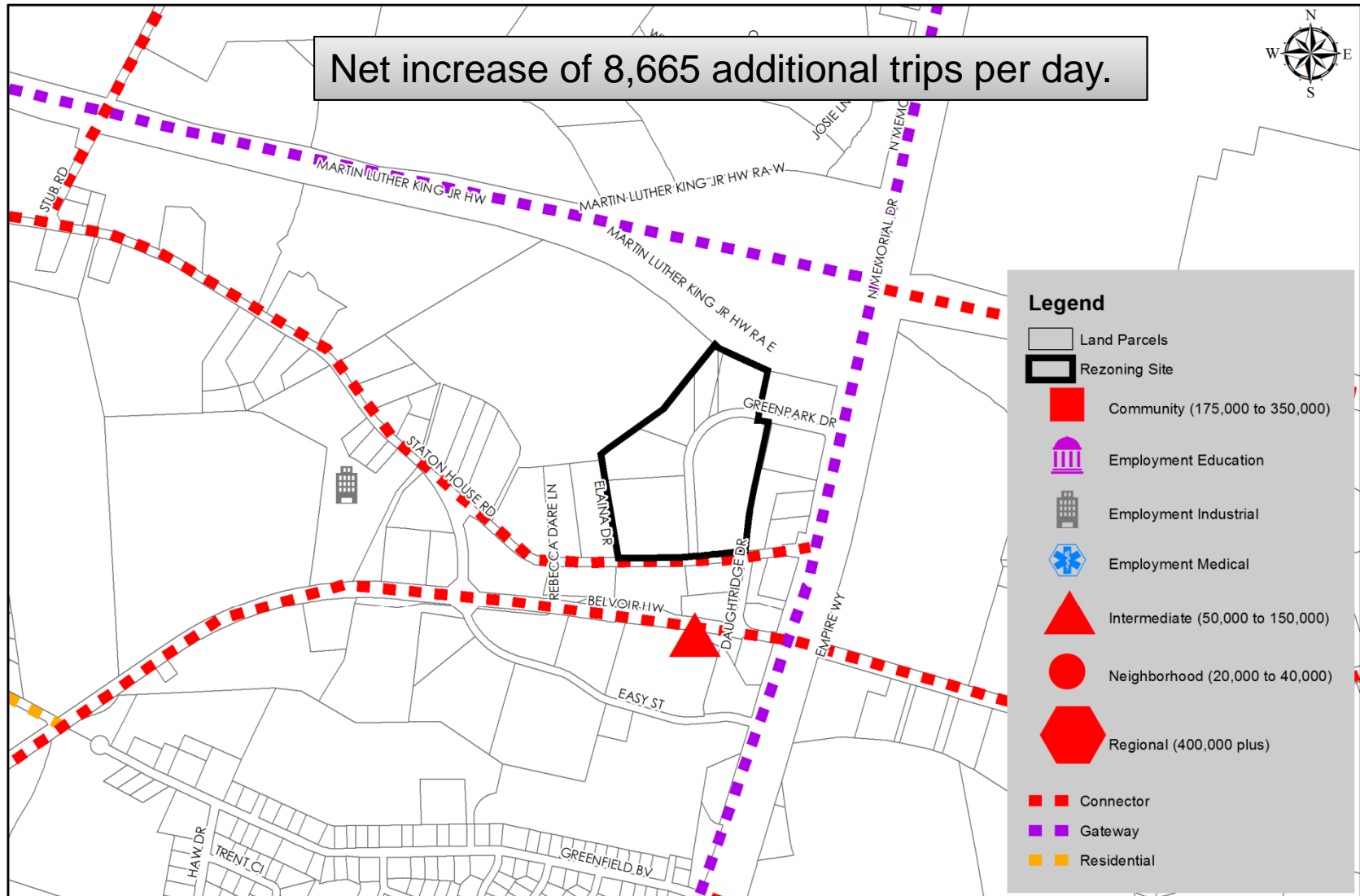
*Find yourself in good company*

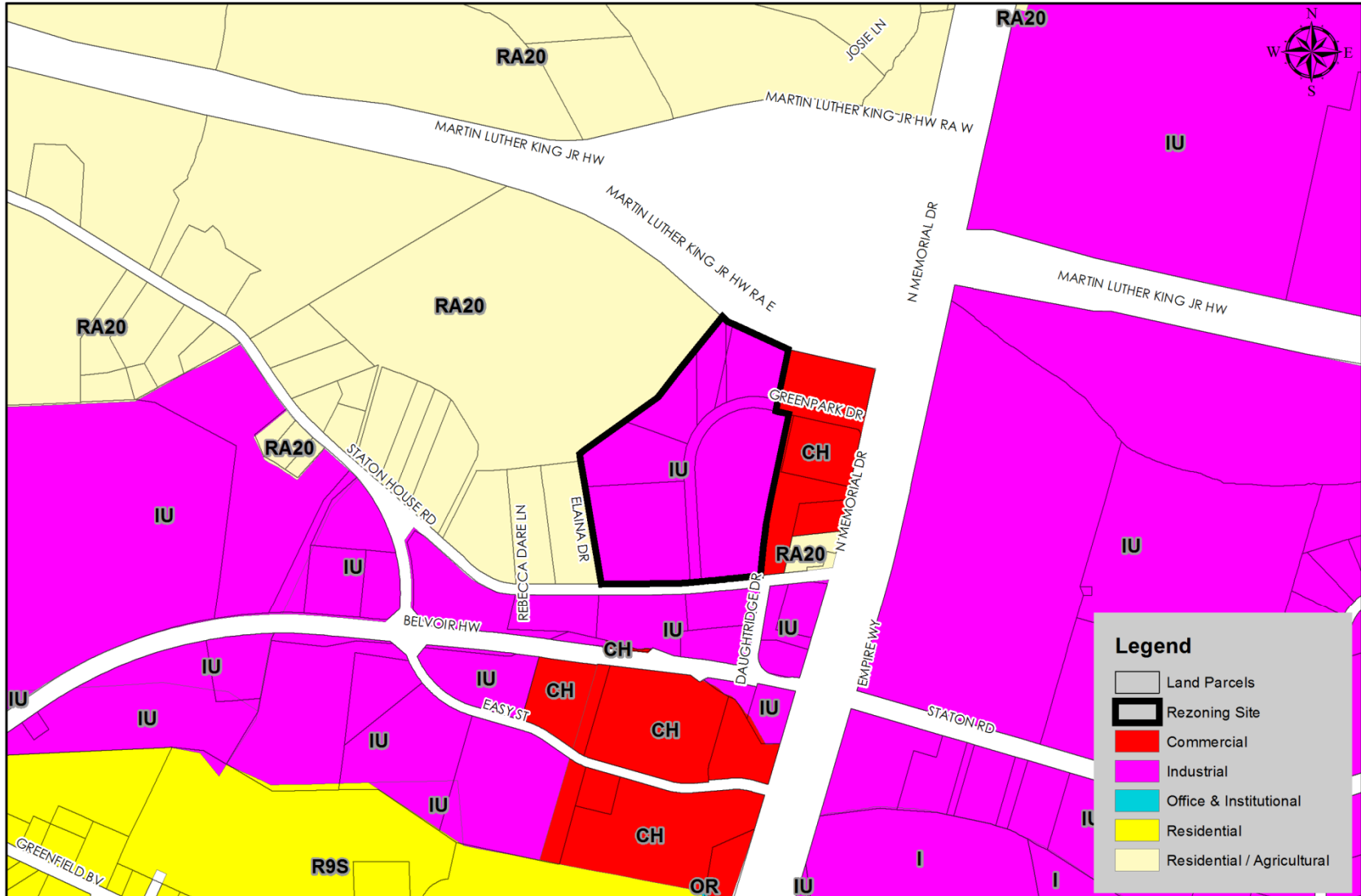


Find yourself in good company



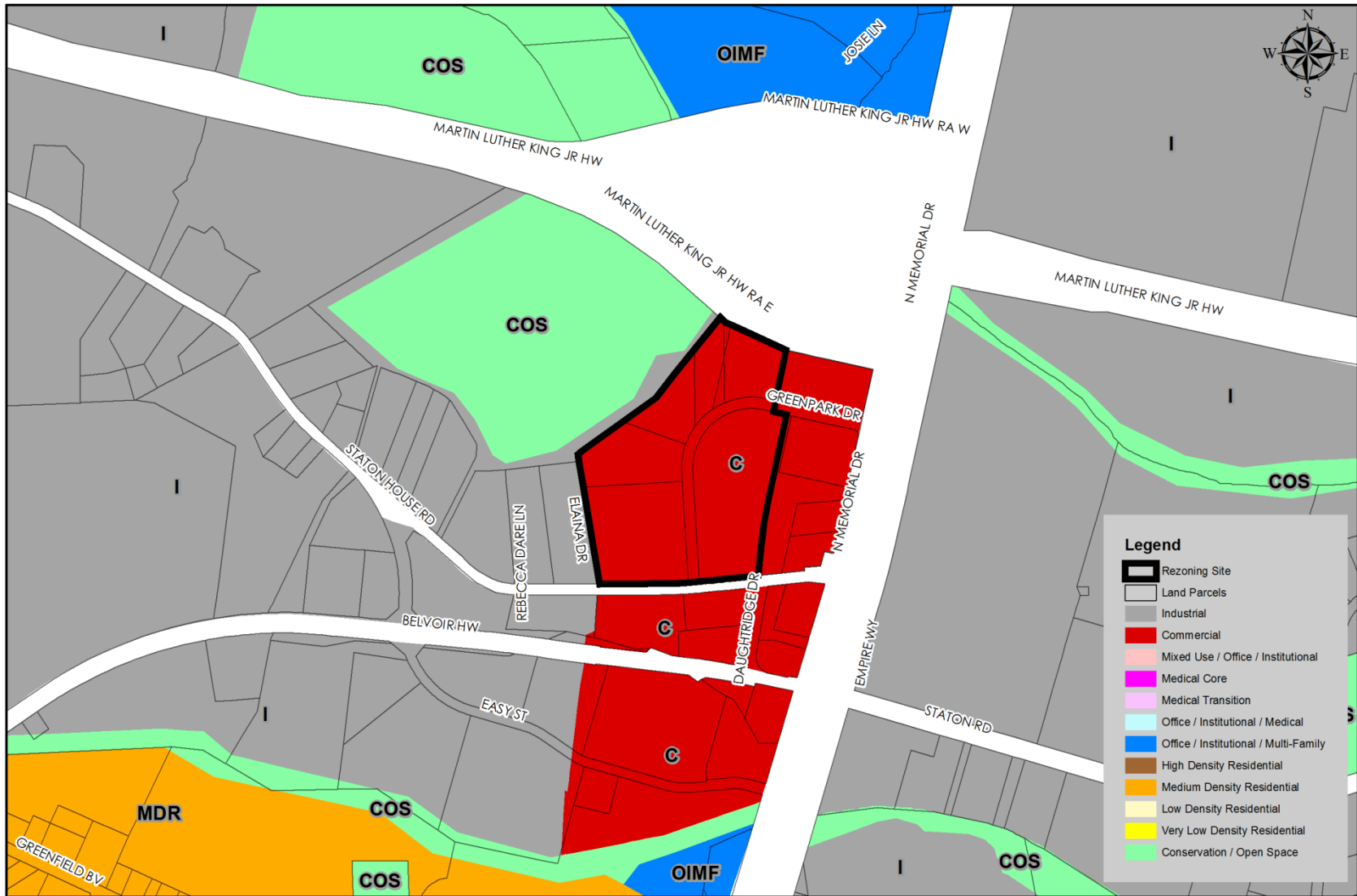
# Corridor and Focus Area





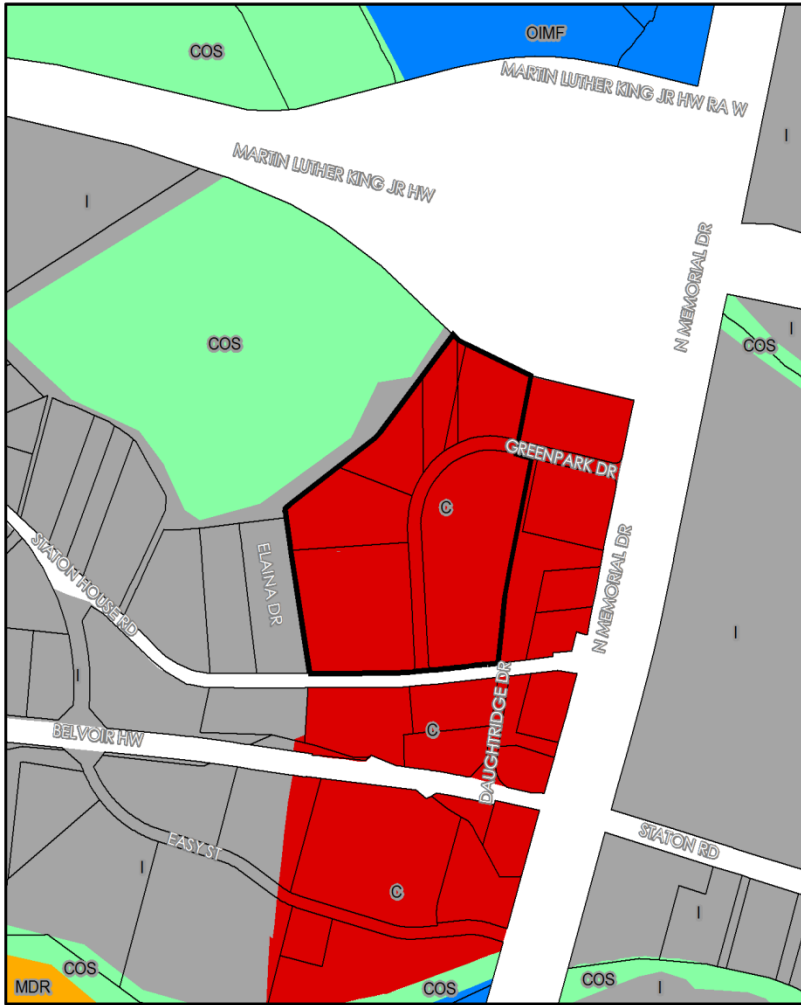
*Find yourself in good company*

# Future Land Use Plan Map



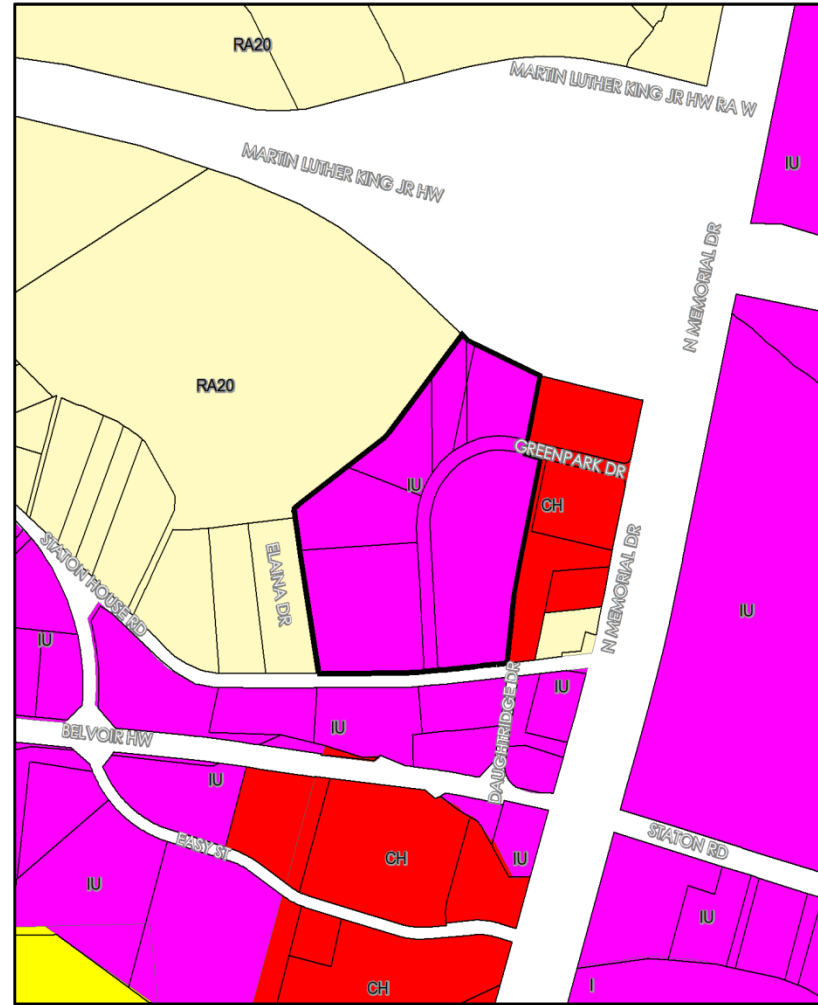
*Find yourself in good company*

# Future Land Use Plan/Zoning Maps



Map Legend

 Industrial	 Medical Core	 Office / Institutional / Multi-Family	 Low Density Residential
 Commercial	 Medical Transition	 High Density Residential	 Very Low Density Residential
 Mixed Use / Office / Institutional	 Office / Institutional / Medical	 Medium Density Residential	 Conservation / Open Space



Map Legend

 Commercial	 Industrial	 Office & Institutional	 Residential	 Residential / Agricultural
--	--	--	---	--

*Find yourself in good company*