

10.03.17

**2017 SWAC
Meeting #3**

Meeting Topics

1. Procedures – 10/3/17
2. Extent of Service – 10/3/17
3. Closed System – 11/7/17
4. Open System – Tentatively 11/7/17
5. Structural Best Management Practices

Meeting Topics

6. Stormwater/Watershed Planning
7. Funding Sources and Revenue Options
8. Water Quality Compliance
9. Floodplain Management
10. Regulatory Reforms/Ordinances

Extent of Service

Current Drainage System

- 237 Miles of Storm Drainage Pipes
- ~17,000 Structures (CB, DI, YI, JB)
- 97 Culverts (typically under roadways)
- 2913 Outfalls (where pipes discharge)
- 68 Miles of City Maintained Open Drainage

Extent vs Level of Service

- Extent of Service – (Where/What)
 - Geographical Boundaries (City, ETJ and beyond)
 - Public vs Private Property
 - Residential vs Commercial Property
 - Components of System
 - Streams, pipes, lakes, stormwater control measures (SCM's)

Extent vs Level of Service

- Level of Service – (How Much/How Often)
 - Frequency (daily, weekly, monthly, annually)
 - Capacity (10yr storm, 25yr, 100yr storm)
 - Control level (peak runoff rate, runoff volume)
 - Funding level (% of budget or fixed dollar amount)
 - Level of impact
 - Quantity - (severe, major, minor, nuisance, aesthetic)
 - Quality (eroded, stable, impaired, fair, good)

Extent of Service

- Narrow extent of service may not be able to serve the community as defined in the City's Vision for the Stormwater Program
- Broad extent of service may not be financially sustainable

Current Policy

- **Extent of Service** (City Right of Way)
 - Maintains all infrastructure
- **Extent of Service** (Outside Right of Way)
See City Ordinance Sec. 9-9-13 in Packet
 - Limited Maintenance (vs repairs/improvements)
 - Some Streams Historically Accepted for Maintenance
 - Drainage Assistance Program (Piping)
 - Ditch and Stream Stabilization Program
 - Conditions of City participation

Maintained Streams

City responsible for maintenance of:

1. Greens Mill Run,
2. Fornes Branch, from Greens Mill Run to NC 43
3. Reedy Branch, from Greens Mill Run to Greenville Boulevard; and
4. Jurisdictional streams within the limits of a city drainage project.

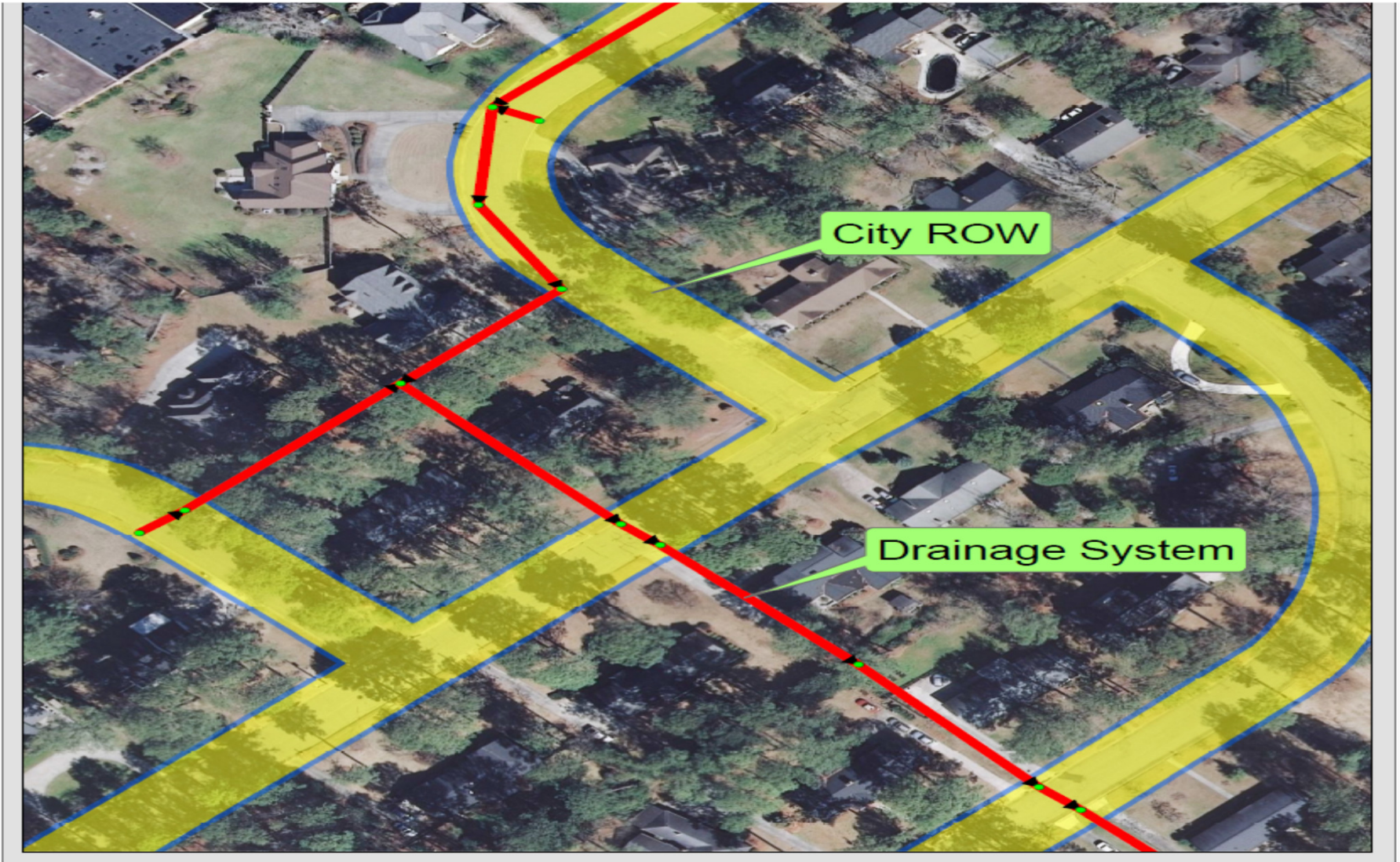
City Maintenance is for flow of the stream. Not aesthetics, nuisance, litter, etc.

Drainage Assistance Program

- City participates in installation of pipes for existing ditches under certain conditions:
 - <48" pipes / 300' minimum length
 - Not a blue-line stream / in City Limits
 - All owners participate / donated easements
 - Owners pay materials
 - Low Priority

Drainage Assistance Program

- City participates in repairs to failing pipes (sink holes, etc.) in limited cases
 - Failure on private property will impact public property
 - Repair beyond owner's capability
 - Participation levels vary



Ditch & Stream Stabilization Program

City Participates in ditch or stream stabilization under these conditions:

- Demonstrated need (active erosion not caused by owner)
- Blue-line stream / in City Limits
- All owners agree to participate / donated easements
- Financially viable / small projects
- Low priority

Conditions of Participation for All Work Outside Right of Way

- Must convey “public water” (from state or city streets). Otherwise is the responsibility of the property owner
- Hold Harmless. Participation in installation does NOT mean the City takes over ownership or liability
- Conditions transferrable with the property
- Assistance only for existing development, no new development
- Owner is responsible for all maintenance
- Limited to available funds, no entitlement

What others are doing

	<u>Community</u>					
	<u>Greenville</u>	<u>Raleigh</u>	<u>Cary</u>	<u>Asheville</u>	<u>Wilmington</u>	<u>Greensboro</u>
<u>Service provided</u>						
public SCM maintenance (Utility maintains for other dept)	x	x		soon	x	x
leaf collection	x	just starting	x			x
provide recommended solutions on private property	x	x	x	X	x	x
maintain only in ROW and public easements	by ordinance		x	x	x	
Maintain outside ROW (receives runoff from public)	by practice	x				x
obtain public drainage easements	x	x		some	x	some
cost share for private drainage improvements	(100)*	(100) least cost	(50/50)			
cost share for water quality improvements		(75-90)		limited		
inspect private SCM's annually	x	audit				x
maintain private SCM's						
Assist with private lakes/dams		x				
Construct SCM retrofits for WQ	pending funds	x			x	x

Questions and/or Comments