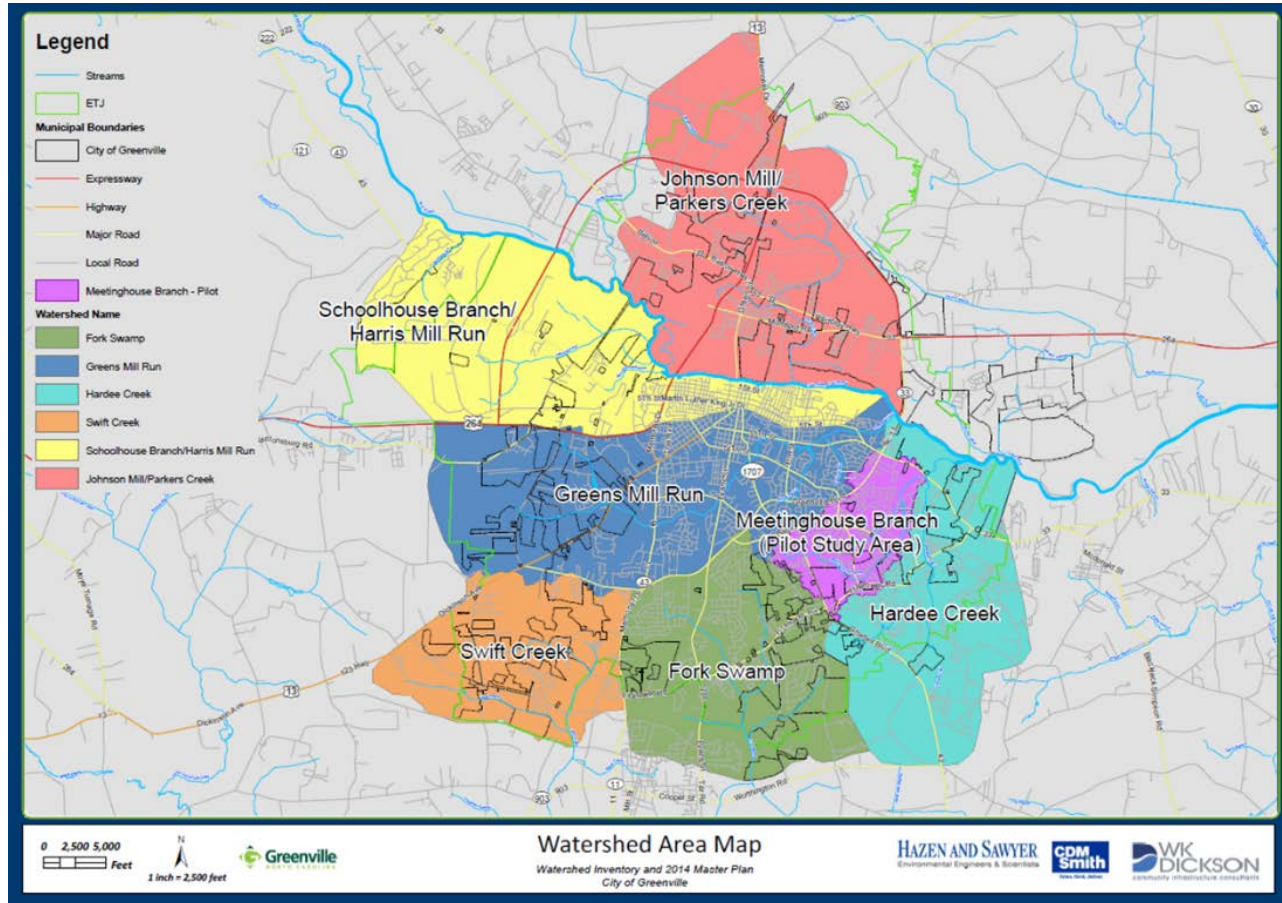
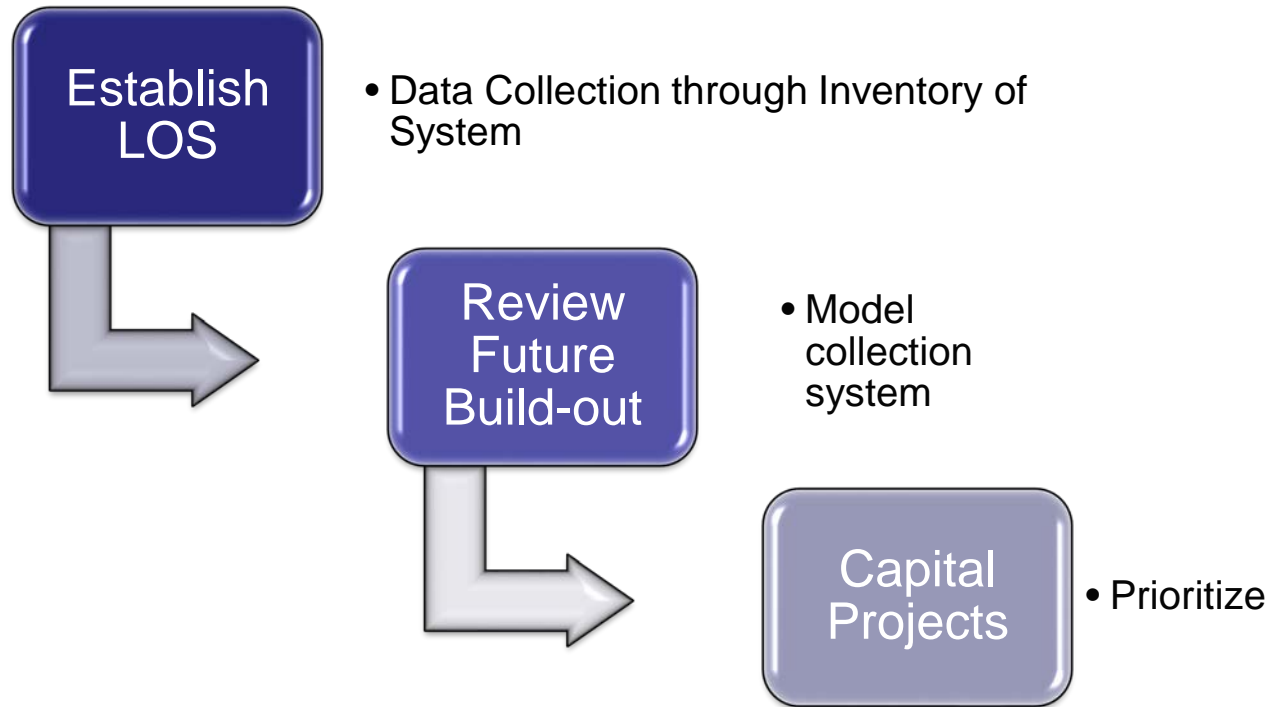


# Watershed Master Plan (WSMP) Overview

# Citywide WSMP Overview



# Watershed Master Plan



# Level of Service

- Closed Pipe Systems – 10-year  
(10% chance/year, 5.8" rainfall/24 hrs)
- Minor Thoroughfare Crossings – 25-year  
(4% chance/year, 7.2" rainfall/24 hrs)
- Major Thoroughfare Crossings – 50-year  
(2% chance/year, 8.5" rainfall/24 hrs)
- Railroads Crossings– 100-year  
(1% chance/year, 9.8" rainfall/24 hrs)

# Data Collection

The following was collected for project:

- 1.25 M linear feet (lf) of pipe – 237 miles
- 17,000 drainage structures
- 236,000 lf of stream walks – 44 miles

# Benefits of Inventory

Moving from reactive to proactive

- Debris blockages removed
- Broken structures repaired
- Illicit discharges
- System connectivity
- Increased efficiency for maintenance and service calls

# Modeling

- Model results show existing and future level of service (LOS)
- Results for existing LOS validated against data collected in public outreach efforts
- Future build-out conditions based on City and County zoning, land use plans, and feedback from City Planning



# Recommendations



## Culvert/Bridge Improvements



# Recommendations

## Floodplain Storage/Benching





# Recommendations



## Closed System Improvements



# Recommendations



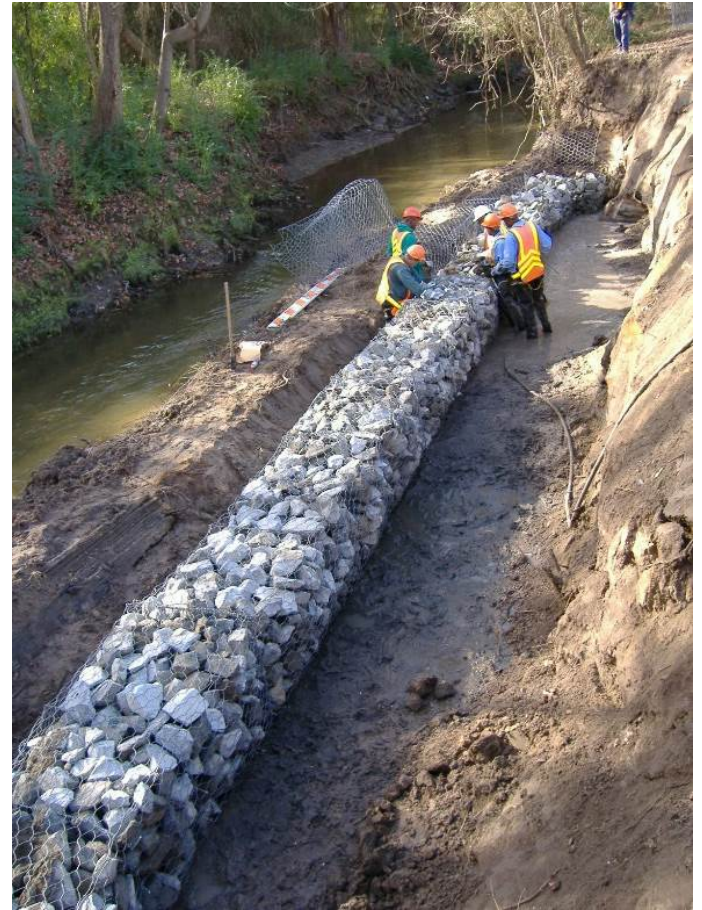
## Detention





# Recommendations

## Stream Stabilization



# Prioritization

- Projects within each watershed prioritized based on 9 categories
- Four prioritization lists for each watershed created based on project type
- Primary flood control projects may be grouped based on dependency on other projects
- Prioritization consistent across watersheds to create Citywide Prioritization lists

# Prioritization

Prioritization can be adjusted for numerous reasons:

- Development
- Failures
- Funding (MOAs, grants, loans, etc.)



# Summary of Costs

## Capital Costs:

Primary System	\$130 M
Secondary systems	\$ 40 M
Stream Bank Stabilization	\$ 12 M
Water Quality	\$ 20 M

# Capital Projects

- Prioritization (Detention, WQ, Stabilization)
- Equitability across the City
- Bond Package
- Long-term Planning