

# City Council Meeting

November 14, 2019



**Greenville**  
NORTH CAROLINA

*Find yourself in good company®*

## Item 9


Ordinance requested by Salvatore Passalacqua to rezone 0.227 acres (9,888 +/- square feet) located along the northern right-of-way of Dickinson Avenue between Columbia Avenue and Pennsylvania Avenue from CDF (Downtown Commercial Fringe) to CD (Downtown Commercial)





*Find yourself in good company®*

# General Location Map

## Map Legend

 Greenville's ETJ


 Tar River

 Pitt-Greenville Airport (PGV)


## City Council Voting District


### District

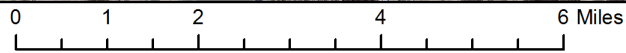
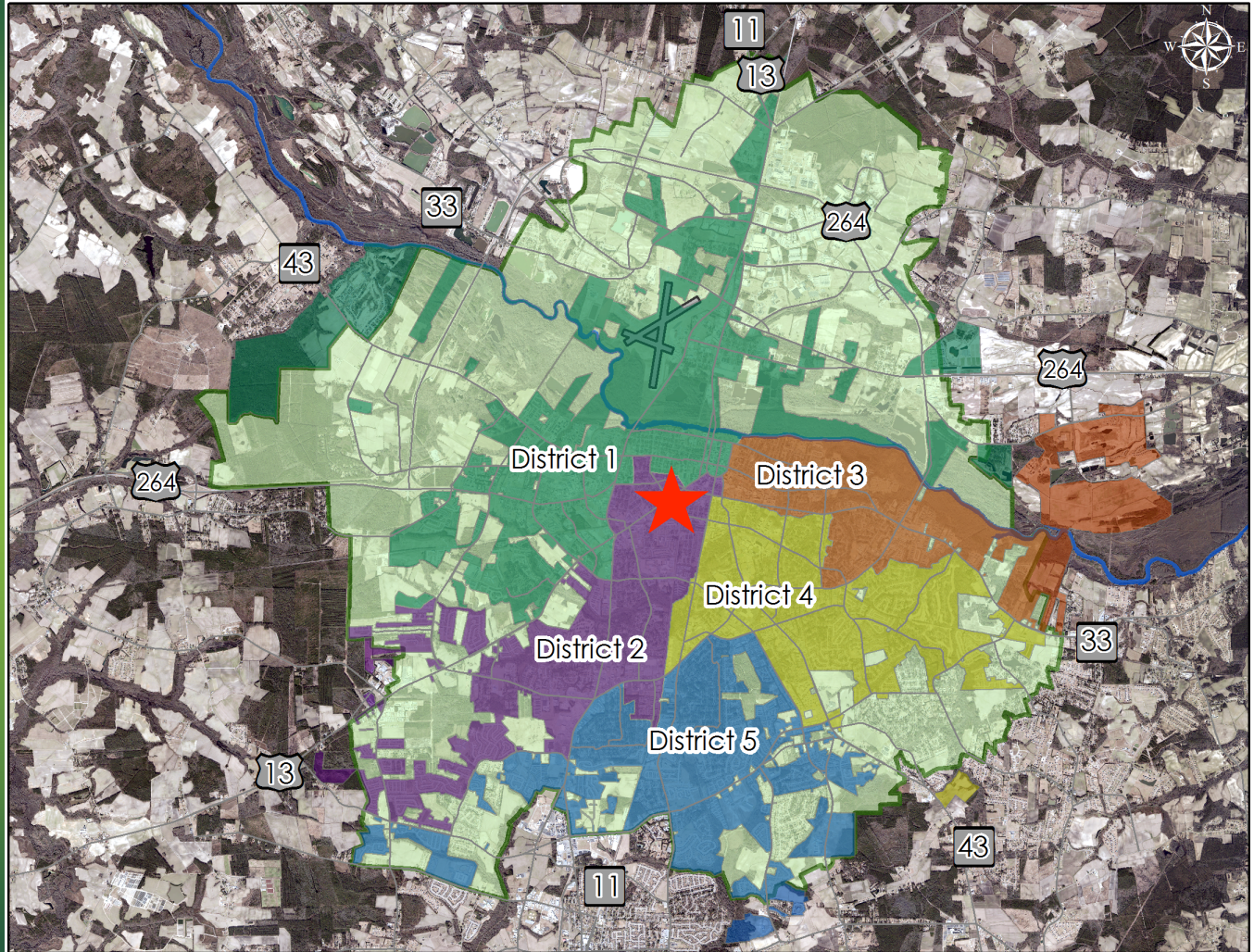
 District 1

 District 2

 District 3

 District 4

 District 5


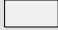


**Greenville**  
NORTH CAROLINA

*Find yourself in good company®*

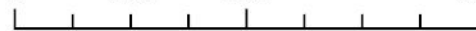
# Aerial Map (2016)

## Map Legend

-  Rezoning
-  Land Parcels



0 0.03 0.06 0.11 Miles



*Find yourself in good company®*



# Dickinson Ave., LLC

NOTICE  
REZONING REQUEST  
FOR WEEDMATOR CALL  
GREENVILLE PLANNING OFFICE  
AT  
329-4498

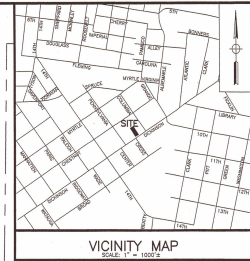
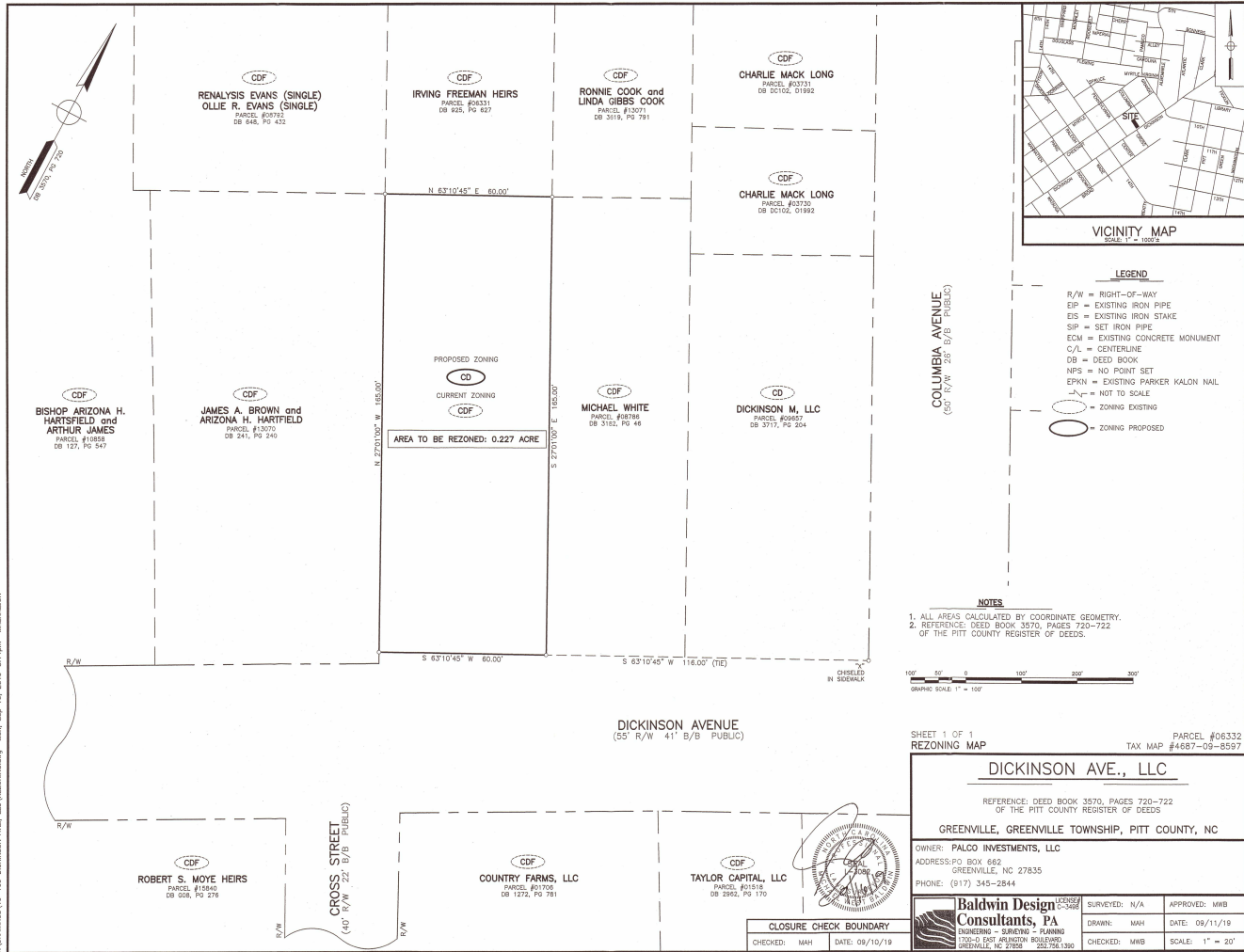


**Greenville**  
NORTH CAROLINA

*Find yourself in good company®*



# Survey 0.227 acres



- LEGEND**
- R/W = RIGHT-OF-WAY
  - EP = EXISTING IRON PIPE
  - EIS = EXISTING IRON STAKE
  - SIP = SET IRON PIPE
  - ECM = EXISTING CONCRETE MONUMENT
  - C/L = CENTERLINE
  - DB = DEED BOOK
  - NPS = NO POINT SET
  - EPKN = EXISTING PARKER KALON NAIL
  - N/S = NOT TO SCALE
  - (---) = ZONING EXISTING
  - (---) = ZONING PROPOSED

- NOTES**
1. ALL AREAS CALCULATED BY COORDINATE GEOMETRY.
  2. REFERENCE: DEED BOOK 3570, PAGES 720-722 OF THE PITT COUNTY REGISTER OF DEEDS.

SHEET 1 OF 1  
REZONING MAP  
PARCEL #06332  
TAX MAP #4687-09-8597

**DICKINSON AVE., LLC**  
REFERENCE: DEED BOOK 3570, PAGES 720-722 OF THE PITT COUNTY REGISTER OF DEEDS  
GREENVILLE, GREENVILLE TOWNSHIP, PITT COUNTY, NC  
OWNER: PALCO INVESTMENTS, LLC  
ADDRESS: PO BOX 662 GREENVILLE, NC 27835  
PHONE: (917) 345-2844

**Baldwin Design Consultants, PA**  
ENGINEERING - SURVEYING - PLANNING  
1700-D EAST ARBINGTON BOULEVARD  
GREENVILLE, NC 27605 252.756.3390

SURVEYED: N/A	APPROVED: MWB
DRAWN: MAH	DATE: 09/11/19
CHECKED: MWB	SCALE: 1" = 20'

**CLOSURE CHECK BOUNDARY**  
CHECKED: MAH DATE: 09/10/19

Y:\DRAWINGS\19-109 DICKINSON AVE., LLC\REZONING.dwg Mon, Sep 16, 2019 - 5:14pm IMBESSON



Find yourself in good company®

# Existing Land Use

## Existing Land Use

	Cemetery
	Commercial
	Duplex
	Industrial
	Institutional
	Landfill
	Mobile Home
	Mobile Home Park
	Multi-Family
	Office
	Public Parking
	Recreation
	Single Family
	Utility
	Vacant



0 0.03 0.06 0.11 Miles



# Flood Plain Map

- AE = Floodway
- AE= Base Flood Elevations
- NEA (Non-Encroachment Area)
- A= 1% Chance of Annual Flood Hazard
- 0.2% Chance of Annual Flood Hazard



0 0.03 0.06 0.11 Miles



Find yourself in good company®

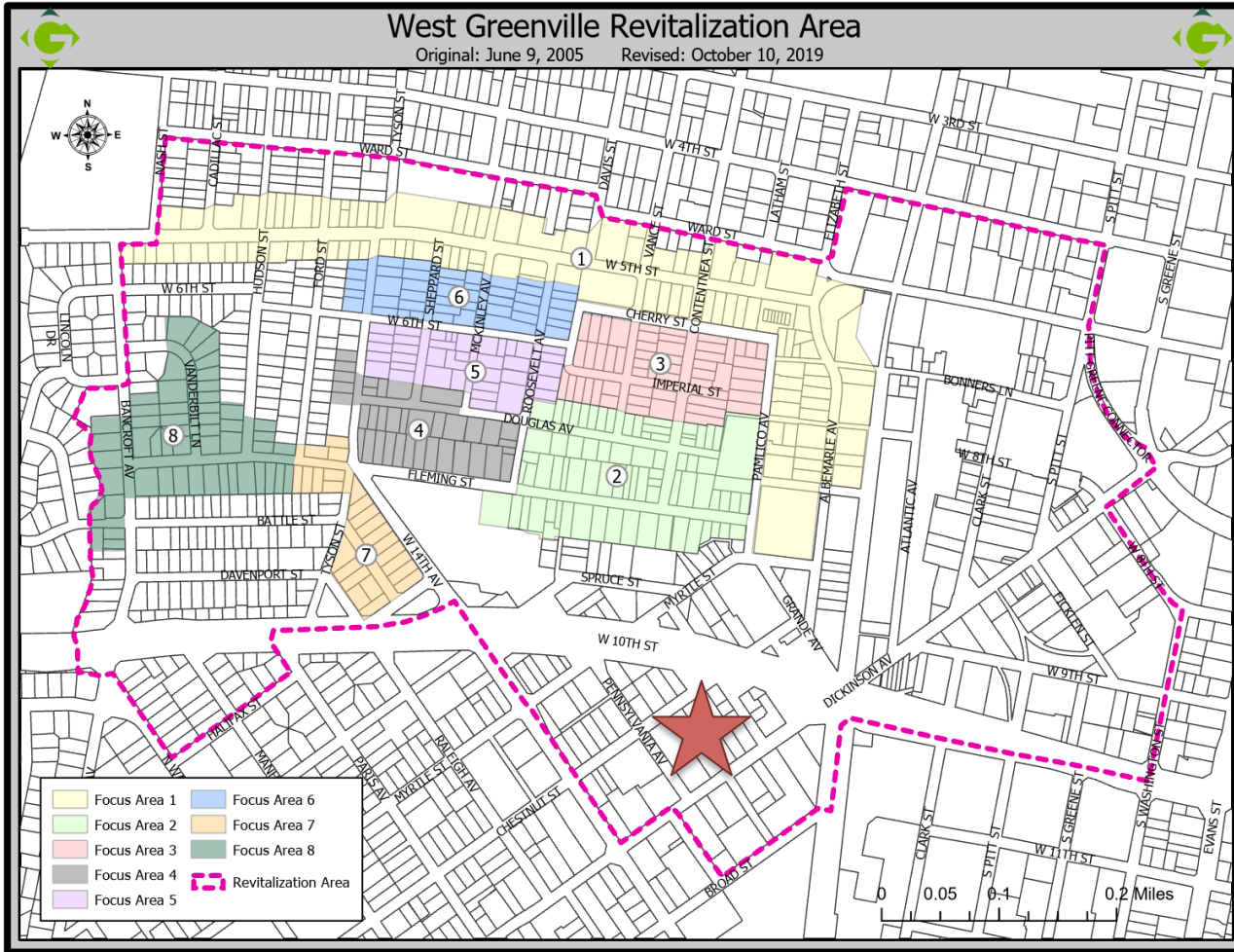




# West Greenville Revitalization Area

Original: June 9, 2005

Revised: October 10, 2019



**Greenville**  
NORTH CAROLINA

*Find yourself in good company<sup>®</sup>*

# Dickinson Avenue Plan

## EIGHT DISTINCT SUB-AREAS



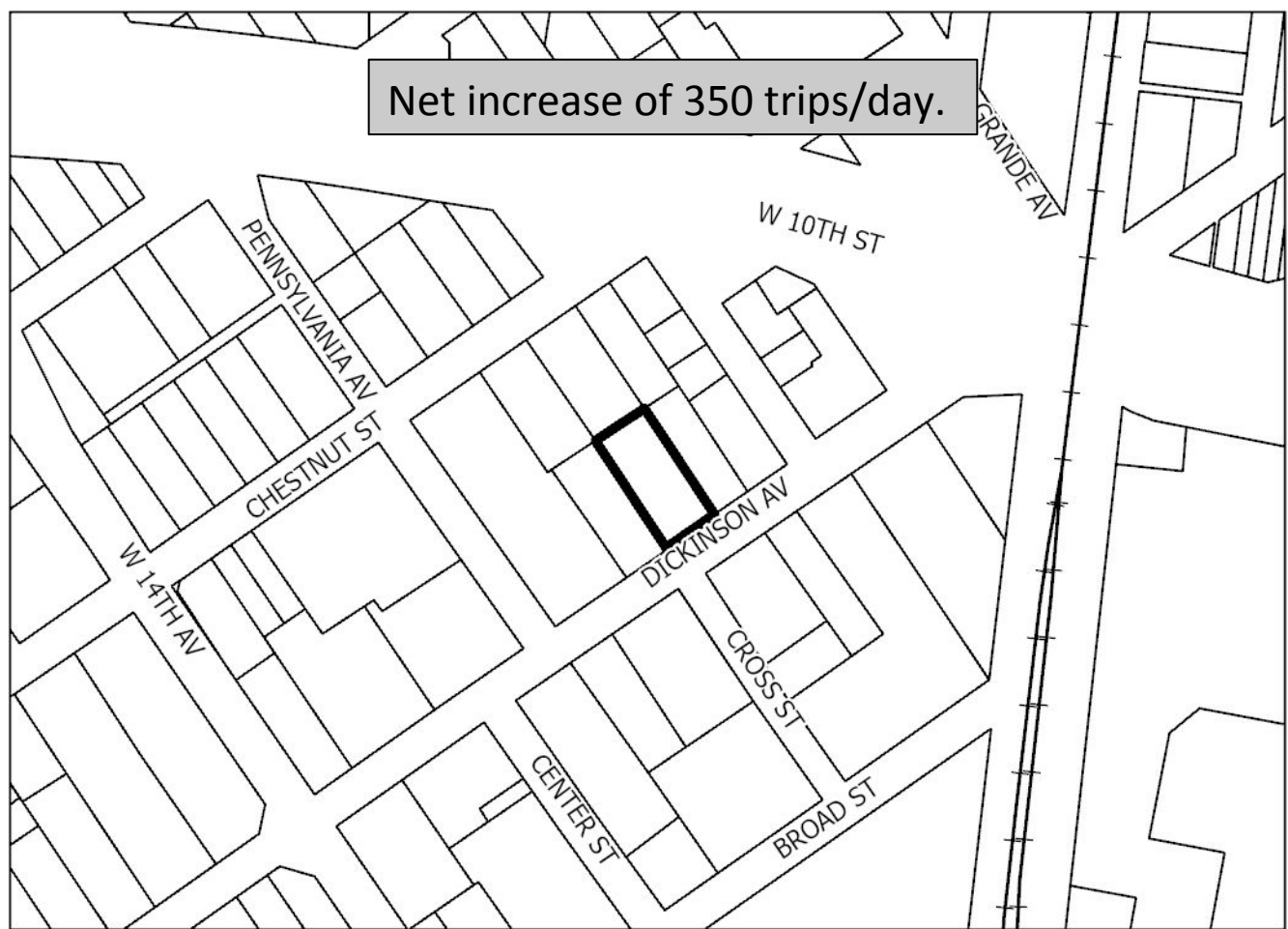
### Legend

- AREA ONE: HISTORIC BUILDING INFILL
- AREA TWO: ARTS DISTRICT AND TRANSIT
- AREA THREE: 10TH STREET THRESHOLD
- AREA FOUR: INNOVATION ZONE
- AREA FIVE: PDR AREAS
- AREA SIX: EVANS CORRIDOR
- AREA SEVEN: EXISTING RESIDENTIAL NEIGHBORHOOD
- AREA EIGHT: ATHLETICS / RECREATION ZONE

# Activity Centers

## Map Legend

-  Rezoning
-  Land Parcels
-  Neighborhood Activity Center
-  Community Activity Center
-  Regional Activity Center
-  Employment Center



0 0.03 0.06 0.11 Miles



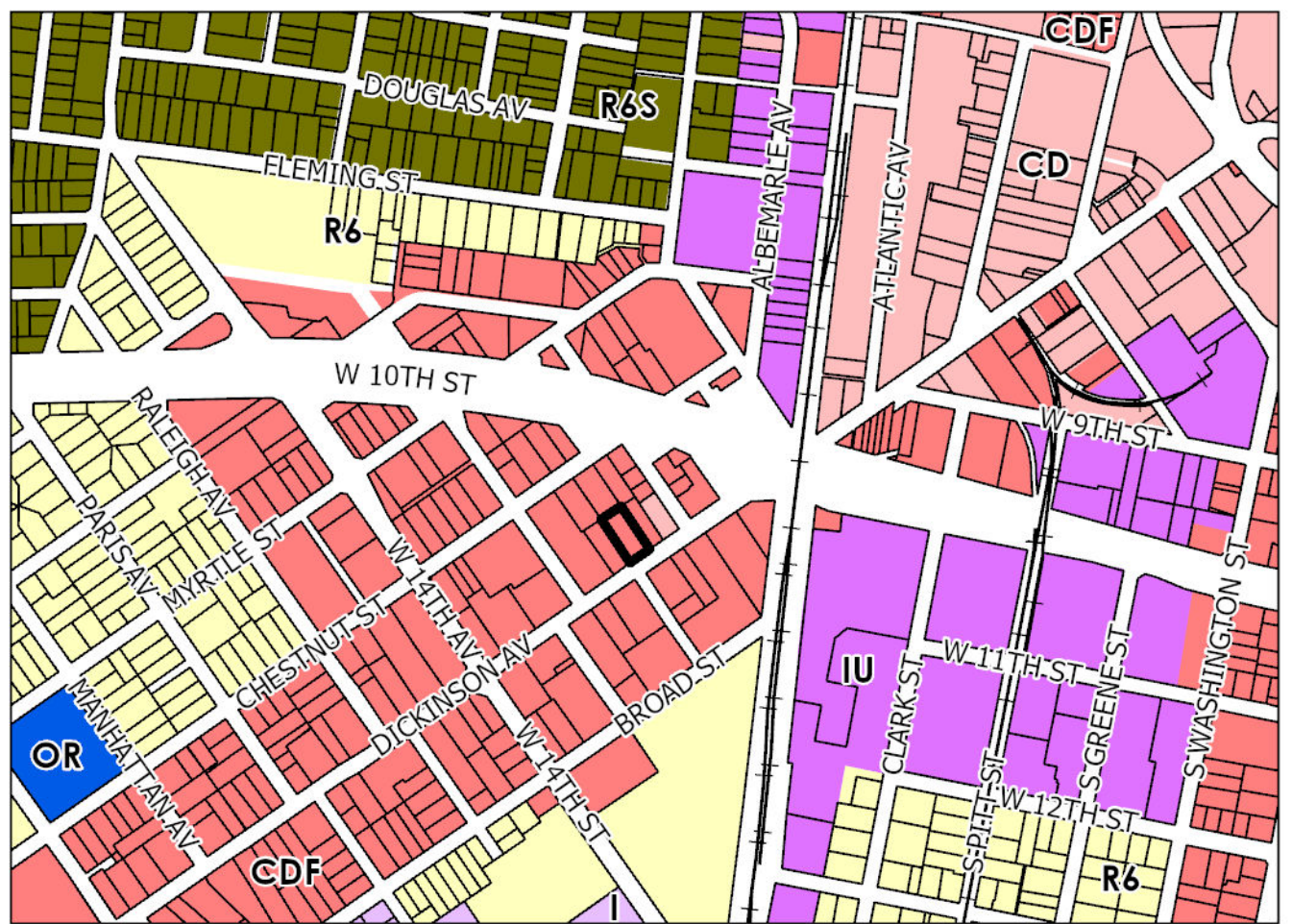
Find yourself in good company®



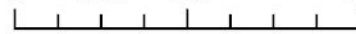
# City Zoning Map

## Map Legend

CD	MI	R6S
CDF	MO	R9
CDF-UC	MS	R9S
CG	O	R9S-CA
CH	OR	R15S
CN	OR-UC	PUD
MCH	R6	MR
MCG	R6A	MRS
I	R6A-CA	RA20
IU	R6A-RU	
PIU	R6MH	



0 0.05 0.1 0.2 Miles



**Greenville**  
NORTH CAROLINA

*Find yourself in good company®*



*Find yourself in good company*



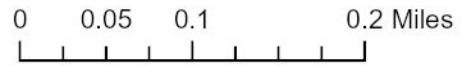
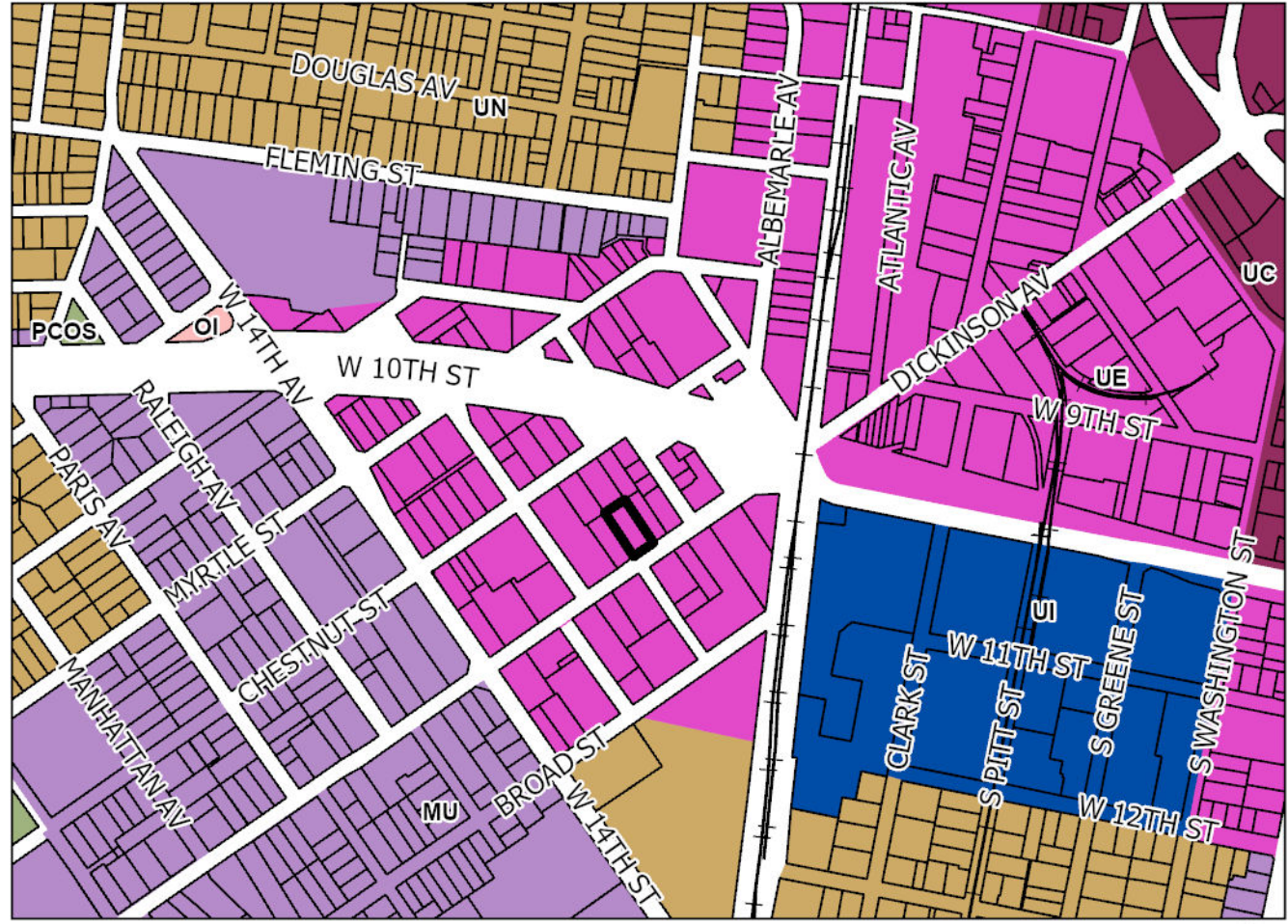
# Future Land Use & Character Map

**Map Legend**

- Rezoning
- Land Parcels

**Horizons2026 Future Land Use**

- PCOS - Potential Conservation and Open Space
- UC - Uptown Core
- UE - Uptown Edge
- MUHI - Mixed Use, High Intensity
- MU - Mixed Use
- C - Commercial
- OI - Office and Institutional
- UN - Uptown Neighborhood
- TNMH - Traditional Neighborhood, Medium to High Density
- TNLM - Traditional Neighborhood, Low to Medium Density
- HDR - Residential, High Density
- LMDR - Residential, Low to Medium Density
- UI - University Institutional
- MC - Medical Core
- MT - Medical Transition
- IL - Industrial / Logistics



**Greenville**  
NORTH CAROLINA



*Find yourself in good company®*

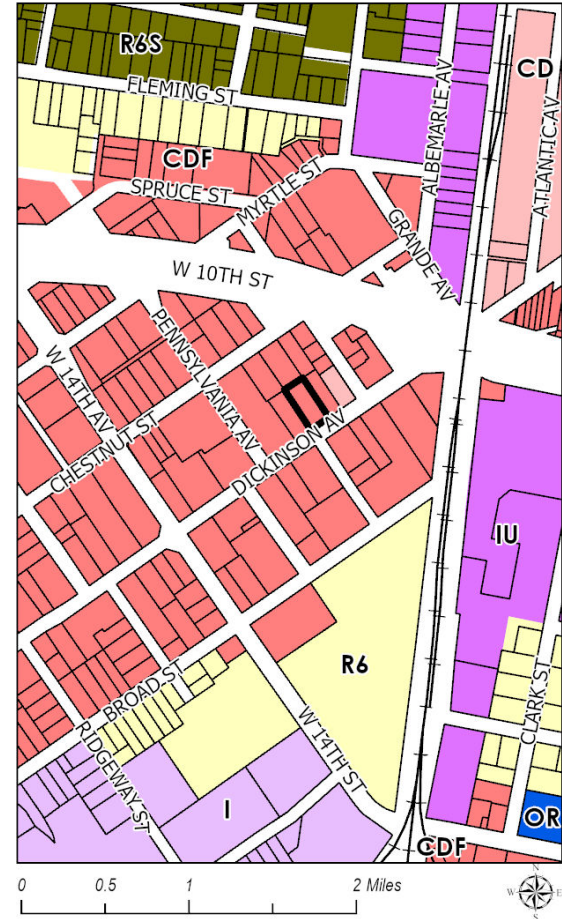


# Future Land Use & Character Map

# Zoning Map

## Map Legend

-  Rezoning Sites
-  Land Parcels



**Greenville**  
NORTH CAROLINA

*Find yourself in good company®*

The Planning and Zoning Commission voted unanimously to approve the request at its October 15, 2019 meeting.



*Find yourself in good company®*

# Item 10

Resolution designating and supporting the formation of an Emerald City Arts District



*Find yourself in good company®*



# Designation of the Emerald City Arts District



**Successful Arts Districts Increase:**

**Tourism**

**Quality of Life**

**Recruitment & Retention**

**Economic Development**

**Equity & Inclusion**





**The boundaries of the Emerald City Arts District would be from Town Common to the south side of Tenth Street, and from Albemarle Avenue to the east side of Reade Street.**

# Item 11

Presentation by Co.-X Properties, LLC related to the private development of a boutique style hotel at 421 and 423 Evans Street



*Find yourself in good company®*



Co. - X  
PROPERTIES

# Proposed Hotel Development

For Project: "421 & 423 Evans St. Greenville, North Carolina – Boutique Hotel Development"

---

# Contents

---

- 1 INTRODUCTION
- 2 WHO WE ARE
- 3 THE PROJECT





# WHO WE ARE

---



Co. - X

ABOUT

# Co.X Properties

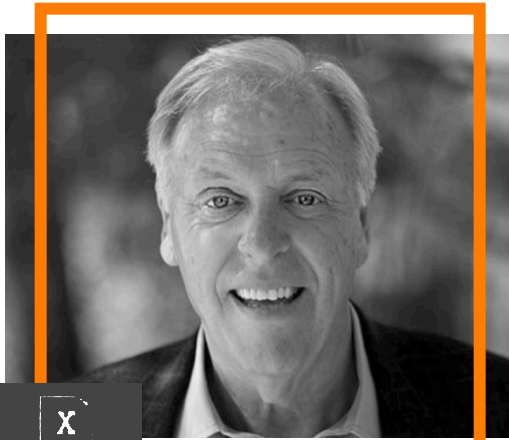
Co. X is a development and investment firm specializing in start-up support, property development, and syndication. Our team has raised over \$155M in investment funds and executed over \$100M in hotel development.

## End-to-End Property Development

- Project Financing
- Site Selection
- Construction
- Project Management
- Operator Selection



Co.-X



Property  
Development

## JOHN SANDLIN

Successfully developing commercial property for over 35 years throughout the Southeast.



**Clarendon Properties, LLC**

Clarendon Properties, LLC is a real estate brokerage, and development firm that supports the entire project lifecycle, from site selection to completion.

- ☑ Hotels
- ☑ dental/medical offices
- ☑ apartment communities

TEAM

# ABOUT JOHN

John Sandlin has more than 35 years of achievement-oriented experience in real estate marketing, site selection and development including projects for McDonalds Corporation. John has an entrepreneurial background with documented success in startup operations. John is currently Managing Partner at Clarendon Properties, LLC, a brokerage and development company with expertise in medical, dental, retail, apartment and hotel locations.

## COMPANY HIGHLIGHTS



### HOTEL & DENTAL PROPERTIES

Successfully developed over a dozen select service hotel products and over 50 dental offices throughout the Southeast.



### CLARENDON PROPERTIES, LLC

Research, Finance, Design, & Development for the real estate brokerage and development firm.



### SITE SELECTION

Extensive experience in commercial development & site selection, including many years with the McDonald's Corporation.



### CROWN HOTEL & MANAGEMENT

Partner in Crown that successfully operates and manages select service hotels throughout the Southeast.





## SCOTT DIGGS

Successfully developing & operating companies for over 25 years throughout the Southeast.

North Carolina resident with long-standing commitment to local development, including regular participation and support to his alma mater ECU.



- ☑ Member ECU Foundation Board
- ☑ Co-Chair ECU School of Business Advisory Board
- ☑ Regional Chair ECU Miller School of Entrepreneurship

### TEAM

# ABOUT SCOTT

M. Scott Diggs is an entrepreneur based out of Wrightsville Beach, North Carolina. President & equity partner of Lift It Rentals. Scott is directly responsible for the day-to-day growth, operations and management of the companies.

Scott was a co-founding partner of Lanier Parking in 1993. He played a key role in establishing Lanier's core values and its original operating platform throughout the Southeast. Lanier was generating over \$200M in revenue and was sold in 2014 to a private equity firm.

## COMPANY HIGHLIGHTS



### LIFT IT RENTALS,

Largely successful heavy equipment rental and finance company managing over 200 assets. Portfolio consists of telehandlers, front-end loaders & scissor lifts.



### CLARENDON PROPERTIES, LLC

Development, investment and capital raise of select service hotels with strategic partnerships. Hilton and Marriott products such as Hampton, Fairfield, and Spring Hill Suites.



### LANIER PARKING SOLUTIONS

Parking management company at the time of exit operating over 450 locations with 2,000 employees in 52 cities throughout the Southeast.



### CO "X" PROPERTIES

Co-founder, development & investment company focused on business creation and opportunity zone ventures.



Strategy

## PAUL ADKISON

Serial entrepreneur from Charlotte, NC. Leads and manages an active investor network in the South East Region. Successfully raised over \$180M. Expert in start-up strategy.

Deep rooted history and ties to Eastern North Carolina and the Greenville area, including regular participation and support to his alma mater ECU.



- ☑ Member ECU Foundation Board
- ☑ Co-Chair ECU School of Business Advisory Board
- ☑ Regional Chair ECU Miller School of Entrepreneurship

TEAM

# ABOUT PAUL

Paul Adkison is a serial entrepreneur and venture capitalist based out of Charlotte, North Carolina. With specialized experience in healthcare technology and recurring revenue models, Paul has founded over 15 companies in areas ranging from telecommunications, online communication monitoring, real estate, and development and large equipment financing and rentals.

## COMPANY HIGHLIGHTS



### LIFT IT RENTALS

Largely successful heavy equipment rental and finance company managing over 200 assets.



### IQ MAX

Healthcare communications company sold to Fusion Connect, Inc. (FSNN) in January 2018.



### ZABRA

Early mover start-up, social media monitoring service for parents and their teens. Nationally recognized platform.



### CO "X" PROPERTIES

Co-founder, development & investment company focused on business creation and opportunity zone ventures.



### THERMODYNAMICS

Heat retardant material technology for racing industry. Annual profit margins of 250%. Sold in 2001, 25x return.



### VMI/USI

Microprocessor manufacturing for telecommunications, Sold in 1998 for \$186M, 17x return.

OUR

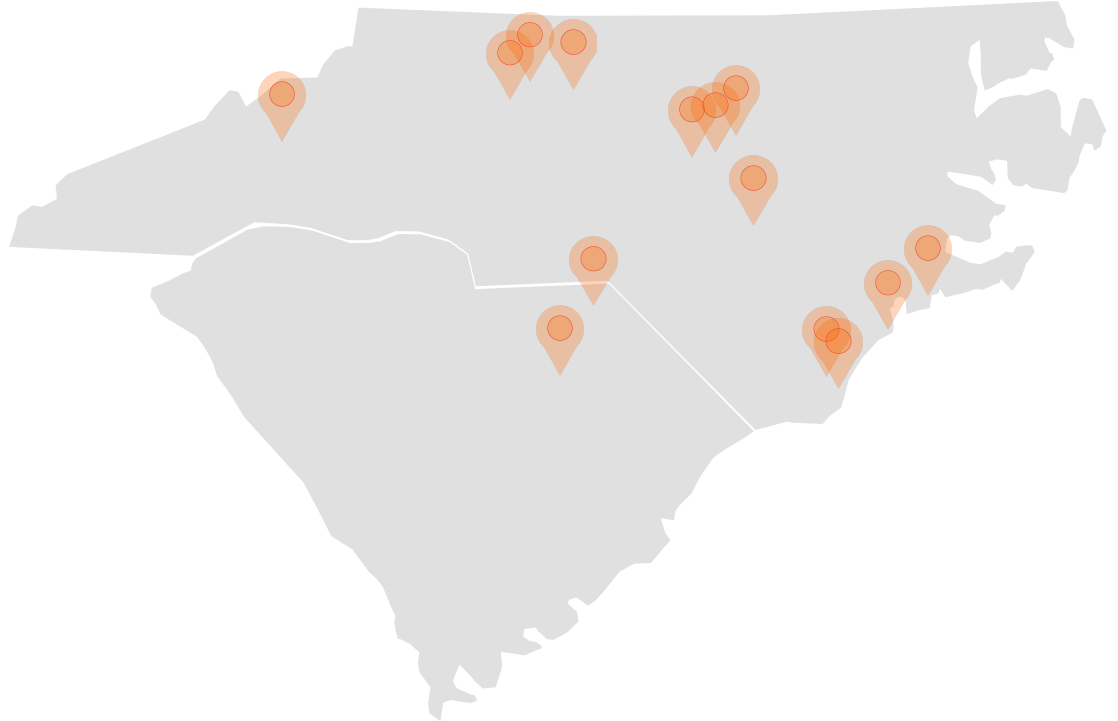
# PAST PROJECTS

---

With a portfolio extending 14 properties in the Carolinas, our team has local experience in hotel development.

## RECENT HOTEL PROJECTS INCLUDE:

- TRU Hotel** (Garner, NC)
- Holiday Inn Express** (Clemmons, NC)
- Fairfield Inn & Suites** (Weaverville, NC)
- Courtyard by Marriott** (Winston Salem, NC)
- Hampton Inn** (Sneads Ferry, NC)
- Hampton Inn** (Knightdale, NC)
- Fairfield Inn** (Dunn, NC)
- Hampton Inn** (Hartsville, SC)
- Hampton Inn** (Swansboro, NC)
- Holiday Inn Express** (Leland, NC)
- Holiday Inn Express** (Wilmington, NC)





TRU by Hilton, Garner NC





Hampton Inn and Suites by Hilton, Knightdale, NC



Hampton Inn and Suites by Hilton, Hartsville, SC

# THE PROJECT

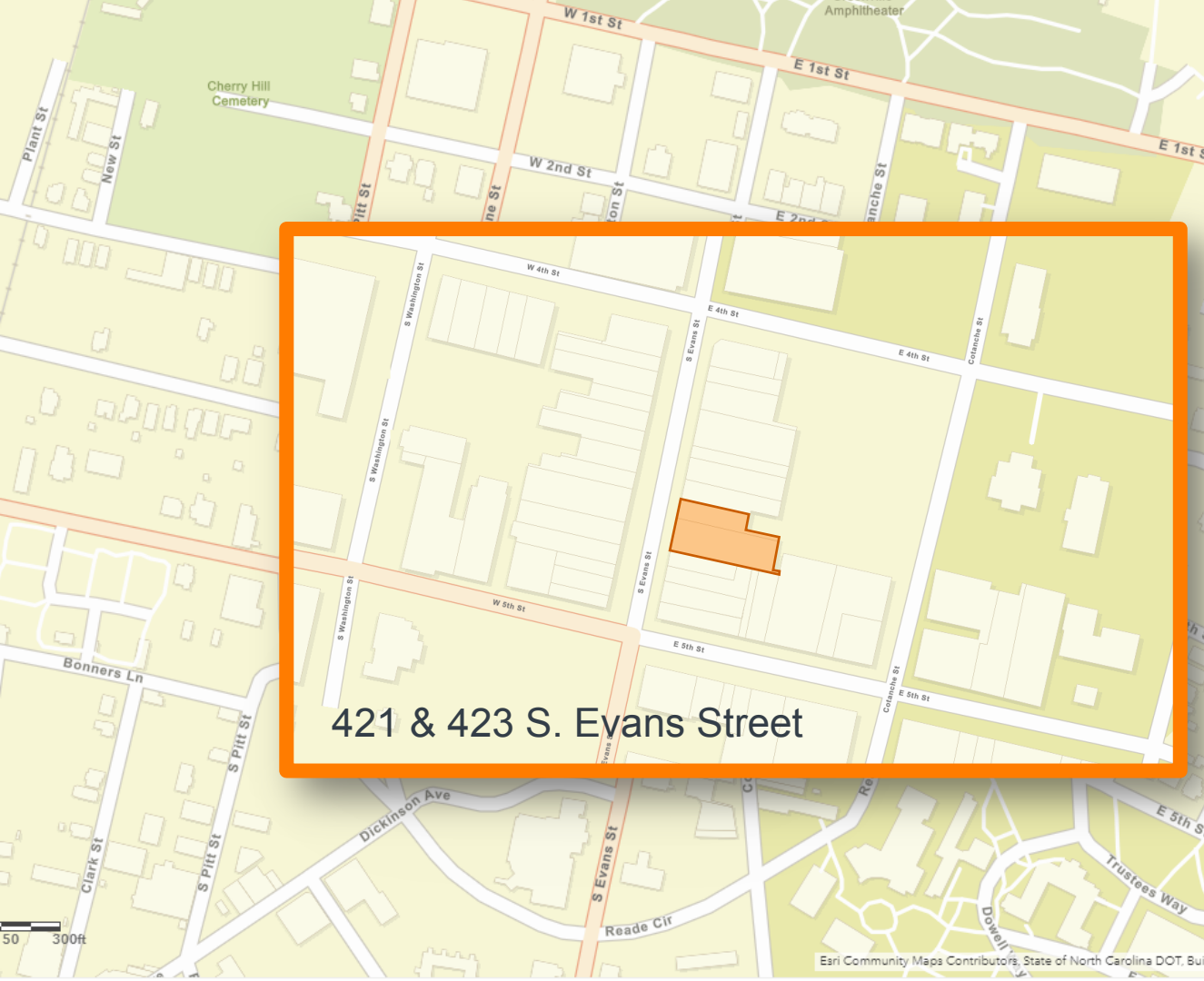
The background of the slide is a dark, atmospheric photograph of a construction site. A large orange excavator is the central focus, positioned on a pile of rubble and dirt. Its arm is extended, and its bucket is partially visible. In the background, there are dark, silhouetted mountains under a dim sky. A horizontal bar with an orange-to-white gradient runs across the top of the image, partially overlapping the title.

**The Project** will consist of the development, construction, and operation of a full-service, *boutique hotel* in downtown Greenville, North Carolina. The six to seven floor hotel will include approximately 60-90 rooms, a rooftop bar/lounge, meeting room space, a fitness center, and a kitchen and dining room. Initial site plans have been developed.

We believe this build will become a foundational project toward the revitalization of the Greenville downtown area.







421 & 423 S. Evans Street



## HOTEL LOCATION

The project encompasses the acquisition of a two parcels located at 421 and 423 Evans St.





## REPUTABLE BRAND

Hotel flagship will be selected from top hotel brands in the hospitality industry, including:

MARRIOTT  
**BONVOY**

 **CHOICE**  
HOTELS™

  
**Hilton**

  
**IHG**®

**HYATT**

Example: The Row Hotel at Assembly Row, MA



## INCREDIBLE FEATURES

- ❑ **High ratings** from AAA, Forbes Travel Guide and TripAdvisor
- ❑ The **little things** that make an experience great, like in-room microwaves and safes, bathrobes and complimentary newspapers
- ❑ **Facilities**, such as fitness and business center, dining options and parking access
- ❑ **Proximity to Greenville Downtown** where visitors can walk

GREENVILLE PRESENTS A UNIQUE  
OPPORTUNITY TO CREATE AN  
UNFORGETTABLE EXPERIENCE



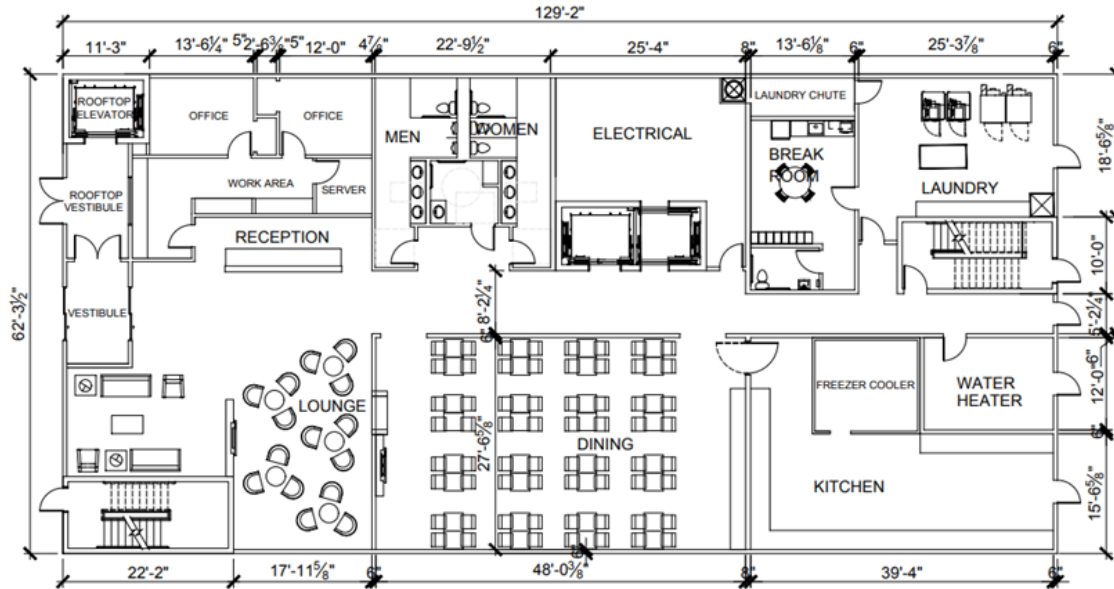
Co. - X







## Project Overview



Ground Floor

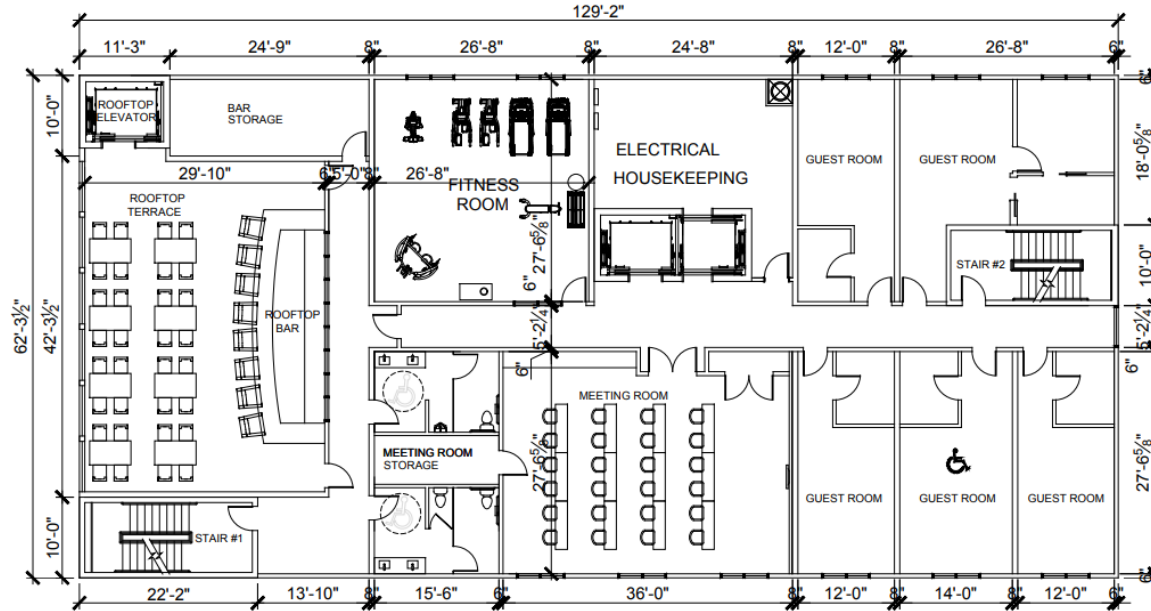
The design is preliminary and subject to change.



*This build will become a foundational project toward the revitalization of the Greenville downtown area.*

**The Project** will consist of the development, construction, and operation of a full-service, *four-star boutique hotel* to be located in downtown Greenville, North Carolina. The six to seven floor hotel will include approximately 60-90 rooms, a rooftop bar/lounge, meeting room space, a fitness center, and a kitchen and dining room. Initial site plans have been developed. The Project will also require adequate parking to serve the reasonably anticipated needs of the hotel without requiring the use of existing public parking. Operations will be outsourced to an experienced management company. The project stand-up period, including construction, will span 18 months.

## Project Overview



Top Floor with roof-top access

The design is preliminary and subject to change.

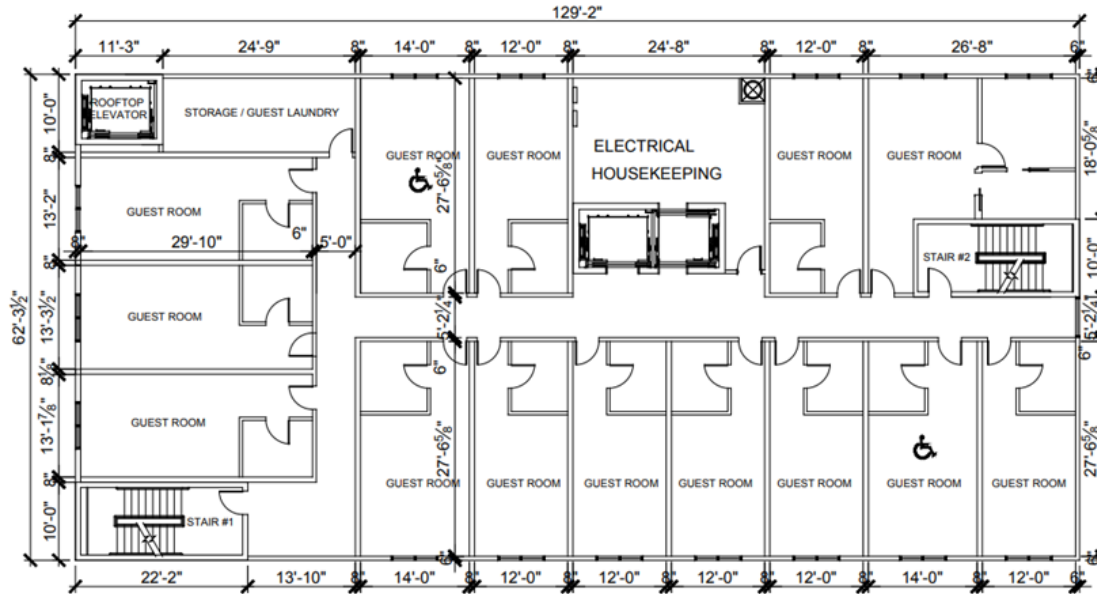


*This build will become a foundational project toward the revitalization of the Greenville downtown area.*

**The Project** will consist of the development, construction, and operation of a full-service, *four-star boutique hotel* to be located in downtown Greenville, North Carolina. The six to seven floor hotel will include approximately 60-90 rooms, a rooftop bar/lounge, meeting room space, a fitness center, and a kitchen and dining room. Initial site plans have been developed. The Project will also require adequate parking to serve the reasonably anticipated needs of the hotel without requiring the use of existing public parking. Operations will be outsourced to an experienced management company. The project stand-up period, including construction, will span 18 months.



## Project Overview



Mid-Level Floor

The design is preliminary and subject to change.



*This build will become a foundational project toward the revitalization of the Greenville downtown area.*



# PUBLIC INCENTIVES & ASSISTANCE

## Public Incentives & Assistance

Co-X Properties is pleased to express its interest in building a best in class, boutique hotel in the heart of downtown Greenville that will help support the revitalization of the City and create jobs and economic development for its residents.

With extensive experience in hotel development, financing, operations, and management we believe that Co-X Properties will be a valuable partner with the City in this project.

Co-X Properties would kindly request as part of the project that the City provide the proposed incentives listed in the table to the right.

We look forward to your review and feedback.

With Kindest Regards,

Co-X Properties

### PROPOSED INCENTIVES HIGHLIGHTS

1. Co-X Properties will purchase 421 & 423 Evans Street
2. Capital investment grant 75% for 7 years
3. Waiver of inspection permit fees related to the project
4. City to provide discounted leased parking in adjoining parking deck 60-90 spaces and 3 short term spaces on Evans Street
5. Furnish covered passageway from hotel to adjoining parking deck
6. Furnish a staging area for construction
7. Work with our General Contractor on needed street closings
8. Expedite approval process



OUR  
**PROCESS**

---

The Project is anticipated to span 18 months following initial planning.



**PLANNING**

(In process)  
Months



**DESIGN**

6 Months



**PHASE I & II  
CONSTRUCTION**

12-18 Months



**OPERATIONS**



IMPACT TO THE CITY  
CITY STAFF COMMENTS

## IMPACT TO THE CITY STAFF COMMENTS

- 1 PROJECT OVERVIEW
- 2 LEASED PARKING
- 3 MODELED PUBLIC INCENTIVES
- 4 FINANCIAL IMPACT TO CITY
- 5 NEXT STEPS



# PROJECT OVERVIEW

- Proposed Development:
  - Boutique Style Hotel Located on Evans Street Between 4<sup>th</sup> and 5<sup>th</sup> Street
  - Between 60 and 90 Rooms
  - Full Service Hotel with Rooftop Bar & Lounge
- Estimated Developer Investment Based on Number of Rooms:
  - 60 Room Hotel: \$16,000,000
  - 90 Room Hotel: \$19,000,000
- Impact to the City:
  - Puts Public Property Back on the Tax Rolls for Private Development
  - Property Would be Sold to Developer at FMV (Approximately \$203,000)
  - Increases the Number of People in Uptown on a Daily Basis by 90 to 120
  - Increases Annual Tax Revenues by \$67,000 to \$80,000
  - Further Enhances Opportunity for Future Economic Growth Uptown



## LEASED PARKING TO HOTEL FROM PARKING DECK

- The Hotel Requesting to Lease Between 60 and 90 Spaces in the Parking Deck From the City for Hotel Use (Depending on Number of Hotel Rooms)
- The Spaces to be Leased are Currently Being Utilized by the City for City Employee Parking
- The City will Relocate City Employees from the Parking Deck to a New City Parking Lot to be Constructed
- There are Two Types of Spaces that will be Leased to the Hotel from the Parking Deck:
  - Full Rate Space: Leased to Hotel at City's Full Monthly Rate per Space
  - Reduced Rate Space: Leased to Hotel at a Reduced Monthly Rate per Space





## LEASED PARKING TO HOTEL FROM PARKING DECK

Type of Space Leased	Available to Hotel	Available to General Public
Full Rate Space	- 24 Hours, 7 Days per Week	Not Available for Public Use
Reduced Rate Space	- Monday-Friday 4 p.m. to 9 a.m. - All Weekend From Friday at 4 p.m. to Monday at 9 a.m.	Monday - Friday 9 a.m. - 4 p.m. <b>(Peak Time for Public Use)</b>

C6 - X

# LEASED PARKING TO HOTEL FROM PARKING DECK

Hotel Size	Full Rate Spaces	Reduced Rate Spaces	Total Spaces
60 Room Hotel	7	53	60
90 Room Hotel	10	80	90
Lease Rate / Space / Month	\$ 64.00	\$ 19.20	

Current FY2019-20 City Rate



- The Annual Lease Rate Charged to the Hotel will be Adjusted on an Annual Basis as Approved by Council and Included in the City's Adopted Annual Budget and Manual of Fees

## MODELED PUBLIC INCENTIVES

- City Capital Investment Grant on Hotel Development:
  - 75% of Annual Property Tax for 7 Years
- Waiver of Inspection Permitting Fees: Building, Electrical, Mechanical, Plumbing
- Reinvest Proceeds From Sale of Property into the Following Public Improvements:
  - Covered Walkway Connecting the Parking Deck and the Hotel (Maximum Allowance of \$50,000)
  - Streetscape Improvements on Evans Street Anywhere Between 4<sup>th</sup> and 5<sup>th</sup> Street 
  - Note: Any Streetscape Improvements Funded by Proceeds From Sale Shall Not Supplant the Streetscape Improvements Required to be Installed by the Developer as a Component of the Hotel Project. 

# FINANCIAL IMPACT TO THE CITY OF GREENVILLE

## 15 Year Pro Forma

	60 Rooms	90 Rooms
<b>Revenue</b>		
Sale of Property to Developer	\$ 203,000	\$ 203,000
City Permit Fees	50,000	60,000
Tax Revenues:		
Property Tax	811,200	963,300
Sales Tax	56,940	71,175
Subtotal	868,140	1,034,475
Leased Parking Revenue	642,460	964,093
<b>Total Revenue</b>	<b>\$ 1,763,600</b>	<b>\$ 2,261,568</b>
<b>Expense</b>		
Uptown Streetscape Improvements	\$ (203,000)	\$ (203,000)
Capital Investment Grant (CIG)	(327,600)	(389,025)
City Permit Fees Waived (Estimated)	(50,000)	(60,000)
<b>Total Expense</b>	<b>\$ (580,600)</b>	<b>\$ (652,025)</b>
<b>Revenue Less Expense</b>	<b>\$ 1,183,000</b>	<b>\$ 1,609,543</b>



# FINANCIAL IMPACT TO THE CITY OF GREENVILLE

## 15 Year Pro Forma Net Revenue

	60 Rooms	90 Rooms
Years 1 - 5	\$ 208,200	\$ 294,483
Years 6 - 10	393,800	546,380
Years 11 - 15	581,000	768,680
<b>Total</b>	<b>\$ 1,183,000</b>	<b>\$ 1,609,543</b>

### Net Revenues Do Not Include:

- Occupancy Tax Revenue Received on Hotel Utilization
- Additional Tax Revenues From Growth in Surrounding Area Property Values
- Additional Sales Tax Revenues From Expanded Commercial Activity in Uptown



# NEXT STEPS



- City Staff Will Work With Developer to Prepare Letter of Intent (in Progress)
- City Staff Will Present Letter of Intent to City Council for Approval in December



## Item 12

Budget ordinance amendment #5 to the 2019-2020 City of Greenville budget, the Special Revenue Grant Fund, and the Community Development Capital Projects Fund



*Find yourself in good company®*



*Find yourself in good company<sup>®</sup>*

**CITY OF GREENVILLE**  
**FY 2020 BUDGET ORDINANCE AMENDMENT #5**



# **CITY OF GREENVILLE**

## **BUDGET ORDINANCE AMENDMENT #5**

### **Budget Ordinance Amendment #5 Includes Adjustments to the Following Funds:**

**General Fund**

**Stormwater Fund**

**Transit Fund**

**Vehicle Replacement Fund**

**Fleet Maintenance Fund**

**Facilities Improvement Fund**

**Sanitation Fund**

**CD Capital Projects Fund**

**Grants Special Revenue Fund**

# CITY OF GREENVILLE

## BUDGET ORDINANCE AMENDMENT #5

Description	Impacted	Amount
To recognize encumbrances carried over at the close of FY 2018-19.	GF, SW, San, Transit, Fleet, FIP, VRF	\$ 2,579,364
To re-appropriate unspent funds related to projects within the Facilities Improvement Program.	FIP	\$ 2,252,677
To recognize funding received from Greenville Utilities Commission for the Energy Assistance Program.	CD Capital Projects	\$ 150,000
To recognize grant funding received for the Love a Sea Turtle STEAM Lab.	Grants Special Rev	\$ 24,383
To appropriate fund balance within the Stormwater Fund for the personnel and equipment costs associated with the planned service increase.	Stormwater	\$ 1,350,000

**CITY OF GREENVILLE**  
**BUDGET ORDINANCE AMENDMENT #5 SUMMARY**

**City of Greenville Operating Fund Budget per Amendment #5:**

<b>Fund</b>	<b>Budget</b>	<b>%</b>
<b>General</b>	<b>\$ 86,707,721</b>	<b>60.8%</b>
<b>Debt Service</b>	<b>5,559,881</b>	<b>3.9%</b>
<b>Public Transportation (Transit)</b>	<b>3,343,172</b>	<b>2.3%</b>
<b>Fleet Maintenance</b>	<b>4,635,802</b>	<b>3.3%</b>
<b>Sanitation</b>	<b>8,001,526</b>	<b>5.6%</b>
<b>Stormwater</b>	<b>9,820,127</b>	<b>6.9%</b>
<b>Housing</b>	<b>1,733,500</b>	<b>1.2%</b>
<b>Health Insurance</b>	<b>14,003,384</b>	<b>9.8%</b>
<b>Vehicle Replacement</b>	<b>4,759,009</b>	<b>3.3%</b>
<b>Facilities Improvement</b>	<b>3,667,375</b>	<b>2.6%</b>
<b>Capital Reserve</b>	<b>390,000</b>	<b>0.3%</b>
<b>Total</b>	<b>\$ 142,621,497</b>	<b>100%</b>

**CITY OF GREENVILLE**  
**BUDGET ORDINANCE AMENDMENT #5**  
**SUMMARY**

**RECOMMENDATION**

**Approve budget ordinance amendment #5 for the City of Greenville Operating Funds (Ordinance #19-031), Special Revenue Grant Fund (Ordinance #11-003), and Community Development Capital Projects Fund (Ordinance #17-024)**

# City Council Meeting

November 14, 2019



**Greenville**  
NORTH CAROLINA

*Find yourself in good company®*