

REQUEST FOR QUALIFICATIONS (RFQ)

RFQ # 22-23-09

The City of Greenville, NC is seeking qualifications from engineering firms interested in providing the services required to prepare final design documents and provide construction administration for a storm water drainage improvement project at the Public Works Complex, 1500 Beatty Street, Greenville NC 27834. The project is funded by the American Rescue Plan Act (ARPA). Interested firms are invited to submit qualifications (in the required quantity and format) for the **“Public Works Storm Water Pipe Improvements”** by Thursday, September 29th at 4 p.m. to the following Drop Box Address:

<https://www.dropbox.com/request/JsxIsUAX85DQodds3REB>

The full RFQ can be retrieved at www.greenvillenc.gov or by contacting Kevin Heifferon at the Public Works Department at (252) 329-4531. All responses are to be submitted electronically at:

<https://www.dropbox.com/request/JsxIsUAX85DQodds3REB>

Submitting your proposal means it is in compliance to what we are asking for and is to be considered responsive.

II. Purpose

This contract will prepare the necessary construction documents and maps for the project, obtaining all applicable permits, and assisting with the bid process. The second task is to provide construction administration services as detailed in the section below.

It is envisioned both tasks will be contracted with the same firm, however there are concerns about potential conflict of interest with utilizing the same firm for both design and construction administration. It is important to minimize the perception of this potential conflict of interest. The consultant will need to demonstrate or provide processes that will alleviate the City's concerns.

III. Scope of Work (Consultant Responsibilities)

The following summarizes the requested professional services:

Task Order 1 (Design through Construction Award)

- Review all available information pertaining to the project, including, but not limited to: previous drainage studies, associated master drainage plans, flood event documentation, existing maps, proposed development, proposed infrastructure improvements associated with the area, etc.
- Perform adequate soil and ground water samples to determine potential causes of existing pipe deterioration. The intent of this task is to specify a more appropriate pipe material.
- Prepare final design drawings to include utilities, specifications, construction schedules, on site pedestrian and vehicle management plans, cost estimates and bid documents.
- Assist the City in acquiring all applicable permits and agreements.
- Advertise bids and assist with selection of contractor from bid submittals.
- Perform adequate soil and ground water samples to determine potential causes of existing pipe deterioration. The intent of this task is to specify a more appropriate pipe material.

Task Order 2 (Construction Services)

- Pre-construction Conference - Outline project specifics. Inform contractor of project administration procedures.
- Management Information System (MIS) - Implement system for organizing, tracking, filing, and managing paper/ electronic correspondence including letters, information requests, submittals, contracts, reports, O&M manuals, progress payments, and change orders, etc.
- Review and approve RFIs and Shop Drawings
- Attend and provide minutes for all progress meetings.
- Schedule - Monitor contractor's schedule weekly. Notify parties of actual or potential deviation from schedule. Work with project team to correct noncompliance with schedule.
- Cost Control - Monitor project funding. Monitor project budgets. Review contract item payments, material quantities, and change order payments.

- Change Orders - Review potential change orders for contractual and technical merit. Prepare independent cost estimate and schedule analysis of work. Provide recommendation and prepare change orders for execution. Keep the City apprised of impact of cumulative change orders.
- Dispute Resolution - Make recommendations and implement procedures for reducing the likelihood of disputes and claims. Assist in the resolution of disputes.
- Quality Assurance/Inspection - Observe and monitor all aspects of project. Notify contractor when work is not in compliance. Prepare daily inspection reports. Provide photographic and video documentation of construction process. Encourage and stress quality in the constructed product. Schedule independent testing services.
- Permit /Environmental Compliance - Review and enforce requirements stipulated in permits issued by regulatory and environmental agencies.
- Progress Payments - Review contractor's payment requests. Verify contractor pay items. Prepare payment documentation for execution.
- Site Safety - Review and monitor contractor's safety program for compliance with OSHA. Notify contractor if unsafe condition is observed. Notify City if contractor refuses to rectify unsafe condition.
- Record Drawings - Collect, review, and transmit contractor's data to engineer.
- Final Walkthrough - Make final inspections. Prepare punch-list. Verify that required certificates of compliance, Review O&M manuals for completeness. Ensure record drawings and any O & M Manuals have been delivered to City.
- Project Completion Report - Process final progress payment to contractor. File Notice of Completion. Prepare final report to include lessons learned. Deliver project records to the City.

IV. Deliverables

Task Order 1

- Final design drawings, permit approvals, easements/rights of entry, specifications, construction schedules, cost estimates, and bid documents detailing the drainage improvements.
- Addenda, pre-bid meeting minutes and sealed bid tab with a recommendation for award.

Task Order 2 – Deliverables for Task Order 2 will be managed through OpCenter, a web based file management tool produced by Duncan Parnell.

- Agenda and meeting minutes for all scheduled meetings.
- Paper files, Digital files, and Correspondence logs.
- Review and approved RFIs and shop drawings.
- Change Orders - Independent cost estimates and recommendations to include change orders ready for execution. Submittal of change order summary report.
- Schedule reports and recommendations.
- Budget reports and cost estimate reviews.
- Progress payment request documents.
- Quality Assurance/Inspection - Photography and videotapes. Project files to include daily inspection reports and correspondence. Testing plan for the project.
- Record drawings.

- Punch list and Notice of Completion/Final Report.

V. Schedule for Consultant Selection

The tentative schedule for selecting a consultant or consultants is outlined below. The actual schedules may vary.

| | |
|--|------------------------------|
| Submit Proposals | September 29, 2022 by 4 p.m. |
| Interviews (if needed) | October 2022 |
| Contract/s Awarded | November 2022 |
| Final Design Completed | March 2023 |
| Advertise for Construction | May 2023 |
| Construction Bids Received and Evaluated | June 2023 |
| Construction Contract Awarded | August 2023 |
| Construction Complete | October 2024 |

VI. Consultant Selection Criteria

Criteria for the selection of the Consultant will include, but not necessarily be limited to, the following:

- Quality and completeness of response to the RFQ (20%);
- Applicable experience of team proposed by the Consultant. Highlight projects this team has worked together on in the past. Provide information on why the experience is relevant, what roles the proposed team members played, This experience should demonstrate your ability to develop effective, real life solutions for challenging and sometimes highly publicized problems (30%);
- Qualifications of individual(s) proposed for the duties (20%);
- Approach and methodology of how Consultant will meet City’s objectives for this project within schedule and on budget (30%).

The selection team will consist of the Director of Public Works, Assistant Director of Public Works, Street Division Superintendent, and Quality Control Technician. The team will evaluate the RFQ’s based on the aforementioned items and corresponding percentages. If several firms appear to have similar qualifications the City may request those firms attend an interview and provide a brief presentation.

Fee negotiations will be initiated with the firm(s) found to be most qualified for this work by the selection committee. As part of negotiations, the selected firm(s) will be expected to develop a detailed Scope of Work for the project.

The City reserves the right to accept the firm with the qualifications that best fit the Scope of Services as defined by the City of Greenville and is deemed to be in the best interest of the City; or the City can reject all submittals.

VII. Supervision of Consultant

The Consultant will be under the supervision of the Director of Public Works for the City of Greenville or his designee.

VIII. Special Conditions: Federal Requirements

This Contract will be funded in whole or in part with federal funding. As such, federal laws, regulations, policies and related administrative practices apply to this Contract. The most recent of such federal requirements, including any amendments made after the execution of this Contract shall govern the Contract, unless the federal government determines otherwise. This section identifies the federal requirements that may be applicable to this contract. The Vendor is responsible for complying with all applicable provisions, updates or modifications that occur in the future relating to these clauses.

To the extent possible, the federal requirements contained in the most recent version of the Uniform Administrative Requirements for federal awards (Uniform Rules) codified at 2.C.F.R., Part 200, including any certifications and contractual provisions required by any federal statutes or regulation referenced therein to be included in this contract are deemed incorporated into this contract by reference and shall be incorporated into any sub-agreement or subcontract executed by the Vendor pursuant to its obligations under this Contract. The Vendor and its sub-contractors, if any, hereby represent and covenant that they are have complied and shall comply in the future with the applicable provisions of the original contract then in effect and with all applicable federal, state, and local laws, regulations, and rules and local policies and procedures, as amended from time to time, relating to Work to be performed under this contract.

No Obligation by Federal Government

The Federal Government is not a party to this contract and is not subject to any obligations or liabilities to the non-Federal entity, contractor, or any other party pertaining to any matter resulting from the contract.

Program Fraud and False or Fraudulent Statements or Related Acts

The contractor acknowledges that 31 U.S.C. Chap. 38 (Administrative Remedies for False Claims and Statements) applies to the contractor's actions pertaining to this contract.

Access to Records

The following access to records requirements apply to this contract:

- (1) The contractor agrees to provide the City of Greenville, the Comptroller General of the United States, or any of their authorized representative's access to any books, documents, papers, and records of the Contractor which are directly pertinent to this contract for the purposes of making audits, examinations, excerpts, and transcriptions.
- (2) The Contractor agrees to permit any of the foregoing parties to reproduce by any means whatsoever or to copy excerpts and transcriptions as reasonably needed.
- (3) The contractor agrees to provide City access to construction or other work sites pertaining to the work being completed under the contract.

Changes

Any change in the contract cost, modification, change order, or constructive change must be allowable, allocable, within the scope of its funding, grant or cooperative agreement, and reasonable for the completion of project scope. All changes and/or amendments to the contract will be outlined in detail, formalized in writing, and signed by the

authorized representative of each party. A Contractor's failure to do so shall constitute a material breach of the contract.

Termination for Convenience (General Provision)

The City may terminate this contract, in whole or in part, at any time by written notice to the Contractor when it is in the Government's best interest. The Contractor shall be paid its costs, including contract close-out costs, and profit on work performed up to the time of termination. The Contractor shall promptly submit its termination claim to the City to be paid the Contractor. If the Contractor has any property in its possession belonging to the City, the Contractor will account for the same, and dispose of it in the manner the City directs.

Termination for Default [Breach or Cause] (General Provision)

If the Contractor does not deliver supplies in accordance with the contract delivery schedule, or, if the contract is for services, the Contractor fails to perform in the manner called for in the contract, or if the Contractor fails to comply with any other provisions of the contract, the City may terminate this contract for default. Termination shall be effected by serving a notice of termination on the contractor setting forth the manner in which the Contractor is in default. The contractor will only be paid the contract price for supplies delivered and accepted, or services performed in accordance with the manner of performance set forth in the contract.

If it is later determined by the City that the Contractor had an excusable reason for not performing, such as a strike, fire, or flood, events which are not the fault of or are beyond the control of the Contractor, the City, after setting up a new delivery of performance schedule, may allow the Contractor to continue work, or treat the termination as a termination for convenience.

Opportunity to Cure (General Provision)

The City in its sole discretion may, in the case of a termination for breach or default, allow the Contractor ten (10) calendar days in which to cure the defect. In such case, the notice of termination will state the time period in which cure is permitted and other appropriate conditions.

If Contractor fails to remedy to the City's satisfaction the breach or default of any of the terms, covenants, or conditions of this Contract within ten (10) calendar after receipt by Contractor of written notice from the City setting forth the nature of said breach or default, the City shall have the right to terminate the Contract without any further obligation to Contractor. Any such termination for default shall not in any way operate to preclude the City from also pursuing all available remedies against Contractor and its sureties for said breach or default.

Waiver of Remedies for any Breach

In the event that the City elects to waive its remedies for any breach by Contractor of any covenant, term or condition of this Contract, such waiver by the City shall not limit the City's remedies for any succeeding breach of that or of any other term, covenant, or condition of this Contract.

Equal Opportunity

"During the performance of this contract, the contractor agrees as follows:

- (1) The contractor will not discriminate against any employee or applicant for employment because of race, color, religion, sex, or national origin. The contractor will take affirmative action to ensure that applicants are employed, and that employees are treated during employment without regard to their race, color, religion, sex, or national origin. Such action shall include, but not be limited to the following: Employment, upgrading, demotion, or transfer; recruitment or recruitment advertising; layoff or termination; rates of pay or other forms of compensation; and selection for training, including apprenticeship. The contractor agrees to post in conspicuous places, available to employees and applicants for employment, notices to be provided setting forth the provisions of this nondiscrimination clause.

- (2) The contractor will, in all solicitations or advertisements for employees placed by or on behalf of the contractor, state that all qualified applicants will receive considerations for employment without regard to race, color, religion, sex, or national origin.
- (3) The contractor will send to each labor union or representative of workers with which he has a collective bargaining agreement or other contract or understanding, a notice to be provided advising the said labor union or workers' representatives of the contractor's commitments under this section, 3 and shall post copies of the notice in conspicuous places available to employees and applicants for employment.
- (4) The contractor will comply with all provisions of Executive Order 11246 of September 24, 1965, and of the rules, regulations, and relevant orders of the Secretary of Labor.
- (5) The contractor will furnish all information and reports required by Executive Order 11246 of September 24, 1965, and by rules, regulations, and orders of the Secretary of Labor, or pursuant thereto, and will permit access to his books, records, and accounts by the administering agency and the Secretary of Labor for purposes of investigation to ascertain compliance with such rules, regulations, and orders.
- (6) In the event of the contractor's noncompliance with the nondiscrimination clauses of this contract or with any of the said rules, regulations, or orders, this contract may be canceled, terminated, or suspended in whole or in part and the contractor may be declared ineligible for further Government contracts or federally assisted construction contracts in accordance with procedures authorized in Executive Order 11246 of September 24, 1965, and such other sanctions as may be imposed and remedies invoked as provided in Executive Order 11246 of September 24, 1965, or by rule, regulation, or order of the Secretary of Labor, or as otherwise provided by law.
- (7) The contractor will include the portion of the sentence immediately preceding paragraph (1) and the provisions of paragraphs (1) through (7) in every subcontract or purchase order unless exempted by rules, regulations, or orders of the Secretary of Labor issued pursuant to section 204 of Executive Order 11246 of September 24, 1965, so that such provisions will be binding upon each subcontractor or vendor. The contractor will take such action with respect to any subcontract or purchase order as the administering agency may direct as a means of enforcing such provisions, including sanctions for noncompliance: Provided, however, that in the event a contractor becomes involved in, or is threatened with, litigation with a subcontractor or vendor as a result of such direction by the administering agency the contractor may request the United States to enter into such litigation to protect the interests of the United States."

Energy Conservation

The contractor agrees to comply with mandatory standards and policies relating to energy efficiency which are contained in the state conservation plan issued in compliance with the Energy Policy and Conservation Act.

Suspension and Debarment

This Contract is a covered transaction for purposes of 49 CFR Part 29. As such, the Contractor is required to verify that none of the Contractor, its principals, as defined at 49 CFR 29.995, or affiliates, as defined at 49 CFR 29.905, are excluded or disqualified as defined at 49 CFR 29.940 and 29.945.

The Contractor is required to comply with 49 CFR 29, Subpart C and must include the requirement to comply with 49 CFR 29, Subpart C in any lower tier covered transaction it enters into.

Suspension and Debarment Certification

By signing and submitting its bid or proposal, the bidder or proposer certifies as follows:

The certification in this clause is a material representation of fact relied upon by the City. If it is later determined that the bidder or proposer knowingly rendered an erroneous certification, in addition to remedies available to the City, the Federal Government may pursue available remedies, including but not limited to suspension and/or debarment.

The bidder or proposer agrees to comply with the requirements of 49 CFR 29, Subpart C while this offer is valid and throughout the period of any Contract that may arise from this offer. The bidder or proposer further agrees to include a provision requiring such compliance in its lower tier covered transactions.

Byrd Anti-Lobbying Amendment, 31 U.S.C. § 1352 (as amended)

Each tier certifies to the tier above that it will not and has not used Federal appropriated funds to pay any person or organization for influencing or attempting to influence an officer or employee of any agency, a Member of Congress, officer or employee of Congress, or an employee of a Member of Congress in connection with obtaining any Federal contract, grant, or any other award covered by 31 U.S.C. § 1352. Each tier shall also disclose any lobbying with non-Federal funds that takes place in connection with obtaining any Federal award. Such disclosures are forwarded from tier to tier up to the recipient who in turn will forward the certification(s) to the awarding agency.

IX. Minority Business Enterprises and Women’s Business Enterprises

It is the policy of the City of Greenville to provide minorities and women equal opportunity for participating in all aspects of the City’s contracting and procurement programs, including but not limited to, construction projects, supplies and materials purchase, and professional and personal service contracts. In accordance with this policy, the City has adopted a Minority and Women Business Enterprise (MWBE) Plan and subsequent program, outlining verifiable goals.

The City has established a 4% Minority Business Enterprise (MBE) and 4% Women Business Enterprise (WBE) goal for the participation of MWBE firms in supplying goods and services for the completion of this project. All firms submitting qualifications and/or proposals agree to employ “good faith efforts” towards achieving these goals and supply other information as requested in the “MWBE Professional Services Forms” included in Appendix B. Failure to complete the MWBE forms may be cause to deem the submittal nonresponsive.

Questions regarding the City’s MWBE Program should be directed to the MWBE Office at (252) 329-4462.

X. Equal Employment Opportunity

The City has adopted an Equal Employment Opportunity Clause, which is incorporated into all specifications, purchase orders, and contracts, whereby a vendor agrees not to discriminate against any employee or applicant for employment on the basis of race, color, religion, sex, national origin or ancestry. By submitting qualifications and/or proposals, the firm is attesting that they are an Equal Opportunity Employer.

Federal law (Rehabilitation Act and ADA) prohibits handicapped discrimination by all governmental units. By submitting a proposal, the vendor is attesting to its policy of nondiscrimination regarding the handicapped.

XI. E-Verify Compliance

By submitting a proposal, consultant acknowledges that compliance with the requirements of Article 2 of Chapter 64 of the North Carolina General Statutes is required by the Consultant and its Sub consultant by North Carolina law and the provisions of the Contract Documents. The Consultant represents that the

Consultant and its Sub consultant are in compliance with the requirements of Article 2 of Chapter 64 of the North Carolina General Statutes. Article 2 of Chapter 64 of the North Carolina General Statutes requires employers, that transact business in the State of North Carolina and employ 25 or more employees in the State of North Carolina, to electronically verify the legal employment status of an employee through the federal E-Verify program after hiring the employee to work in the State of North Carolina.

XII. Iran Divestment Act

As a result of the Iran Divestment Act of 2015 (Act), Article 6E, N.C. General Statute § 147-86.55, the State Treasurer published the Final Divestment List (List) which includes the final companies and persons engaged in investment activities in Iran and will be updated every 180 days. The list can be found at <https://www.nctreasurer.com/inside-the-department/OpenGovernment/Pages/Iran-Divestment-Act-Resources.aspx>.

By submitting the Proposal, the Consultant certifies that, as of the date of this bid, it is not on the then current List created by the State Treasurer. The Consultant must notify the Department immediately if, at any time before the award of the contract, it is added to the List.

As an ongoing obligation, the Consultant must notify the Department immediately if, at any time during the contract term, it is added to the List. Consistent with § 147-86.59, the Consultant shall not contract with any person to perform a part of the work if, at any time the subcontract is signed, that person is on the then-current List.

During the term of the Contract, should the Department receive information that a person is in violation of the Act as stated above, the Department will take action as appropriate and provided for by law, rule or contract.

XIII. Other Requirements

Review of Professional Services Contract

Attachment C contains the City of Greenville's standard professional services contract for your review. Please direct all questions and concerns about the terms and conditions in the standard contract to the City Attorney's Office at (252) 329-4426.

Insurance

The City of Greenville requires the selected firm to have a minimum of \$1,000,000 of professional errors and omissions insurance prior to entering into an agreement with the City.

Acceptance of Terms

Submission of qualifications shall constitute acknowledgment and acceptance of all terms and conditions hereinafter set forth in the RFQ unless otherwise expressly stated in the submittal.

Financial Responsibility

The firm making the proposal understands and agrees that the City shall have no financial responsibility for any costs incurred by the firm in responding to this RFQ prior to the issuing of an agreement. This includes but is not limited to costs related to site visit(s) and estimate preparation(s) for contract negotiations.

Conflict of Interest

Each proposer shall affirm that no official or employee of the City of Greenville is directly or indirectly interested in this proposal for any reason of personal gain.

XIV. Proposal Submission and Deadline

The following information should be included in the submittal:

- Corporate Profile
- Highlight Project Team, include:
 - o organizational chart,
 - o availability,
 - o expertise of key team members; and
 - o previous experience on similar projects (provide client name and contact information, estimated and realized design/construction cost and schedule)
- Approach or methodology to accomplish objectives specific to this project
- Proposed man-hour estimate

Detailed approaches, scopes, and fees will be developed during contract negotiations with the selected firm prior to initiation of each task order. Fees are not required for submission on this RFQ.

Interested firms are invited to submit one electronic copy of their proposal no later than 4:00 pm, September 29th at 2022 at 4 p.m. to the following address: Drop Box Address:

<https://www.dropbox.com/request/JsxlsUAX85DQodds3REB>

For questions regarding this Request for Qualifications, contact Kevin Heifferon at (252) 329-4531 or kheifferon@greenvillenc.gov.

GENERAL OBSERVATION REPORT



Report Number: 72221139.0001
Service Date: 07/25/22
Report Date: 07/29/22
Task: Piping Investigation and Inspection

| Client | Project |
|--|--|
| City of Greenville NC c/o Public Works Attn: Devin Thompson 1500 Beatty St Greenville, NC 27834-5252 | Public Works Storm Water Piping Inspection 1500 Beatty Street Greenville, NC Project Number: 72221139 |

GENERAL INFORMATION

The storm sewer in question exists from the inlet at Skinner Street running east through the Public Works facility parking and drive areas, under Beatty Street and the railroad tracks, out falling in the creek east of the tracks. Several manholes and drop inlets exist along the alignment. The storm pipe is corrugated steel, approximately 7 years old. Concern of the pipes condition was raised after pavement failures in the Public Works parking areas.

SUMMARY OF SERVICES

Terracon representatives entered the pipe at Skinner Street the morning of Monday, July 25, 2022. We were accompanied, and conditions monitored by a safety and rescue team.

The upstream inlet to the system consisted of reinforced concrete pipe (RCP) in the area crossing Skinner Street. At the east side of Skinner Street, the material changed to corrugated steel pipe. Corrosion at the bottom of the pipe was noted immediately. The initial sections of pipe existed with what appeared to be surface corrosion, however penetrations through the bottom of the pipe appeared to develop within 50’ of the west end.

Corrosion and penetrations increased in frequency and severity as we progressed downstream. Areas from approximately 3+00 to 11+11 existed with severe corrosion at the pipe bottom. A small fish was noted at approximately station 10+56, indicating that water remains in the pipe on a continual basis. A short, approximately 30’ length of pipe at station 7+33 has been repaired with a spray applied grout liner. This liner appears to be in good condition with no evidence of failure.

From station 11+11 to 13+56 the pipe appeared to be in good condition with no penetrations through the bottom. Penetrations were noted again at station at station 13+56 to the manhole at station 15+54. This section existed with moderate to significant sediment and debris.

The manhole at 15+54 includes an additional 84” pipe entering from the northeast. The exit from this manhole is a 54” corrugated steel pipe. Penetrations through the bottom were noted at station 16+50. A wooden 4x4 post was inserted into the pipe at station 15+75. The post was nearly vertical and appeared to have been placed

intentionally. Manholes exist at station 16+66 and 17+10. At station 18+00 we noted surface corrosion at the bottom and a odor of diesel fuel. A manhole at station 18+78 transitioned the pipe to 84" bituminous lined corrugated steel pipe. This pipe extended to the outfall at station 19+79. The pipe appeared to be in good condition with little to no corrosion or penetrations. However, the bituminous liner has eroded or failed in several large areas.

Soil sampling was attempted at two locations along the alignment, station 0+54 and 9+46. At both locations we attempted to sample through corroded penetrations of the pipe bottom. The underlying soils appeared to consist of medium sand with gravel. The flowing water in the pipe persistently washed the soil material from our sampler, limiting the material recovered. Resulting samples are of small quantity and of little use.

Generally, the storm sewer system from Skinner Street to the outfall east of the tracks is state of failure. The majority of the pipe bottom has corroded and or eroded away, exposing and eroding the underlying sandy soil.

Photos recorded during our entry are attached.

Services:

Terracon Rep.: G. Lucas Fenton, PE, CWI


Reported To:

Contractor:

Report Distribution:

(1) City of Greenville NC, Devin
Thompson

Reviewed By:



G. Lucas Fenton, PE, CWI

Department Manager

The tests were performed in general accordance with applicable ASTM, AASHTO, or DOT test methods. This report is exclusively for the use of the client indicated above and shall not be reproduced except in full without the written consent of our company. Test results transmitted herein are only applicable to the actual samples tested at the location(s) referenced and are not necessarily indicative of the properties of other apparently similar or identical materials.



Photo 1 Upstream entrance west of Skinner



Photo 2 Precast RCP at Skinner



Photo 3 Water level in RCP. Note deteriorating joint



Photo 4 Typical joint



Photo 5 Second RCP at Skinner



Photo 6 Drop inlet east side of Skinner



Photo 7 Damaged joint in corrugated steel pipe (CSP), sta 0+10

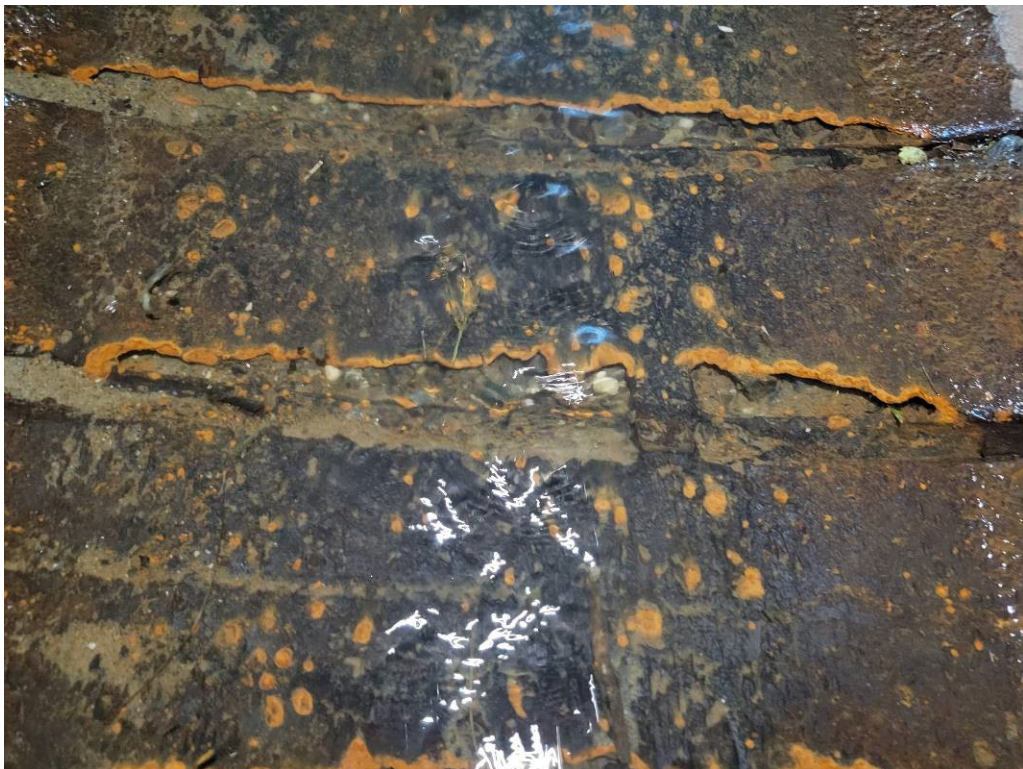


Photo 8 CSP below water line, typ sta 0 to 1+90



Photo 9 CSP below water line, typ sta 0 to 1+90



Photo 10 At MH base, erosion under pipe, sta 1+90



Photo 11 Sta 1+91, apparent repair with sealant showing, approximately 11 o'clock

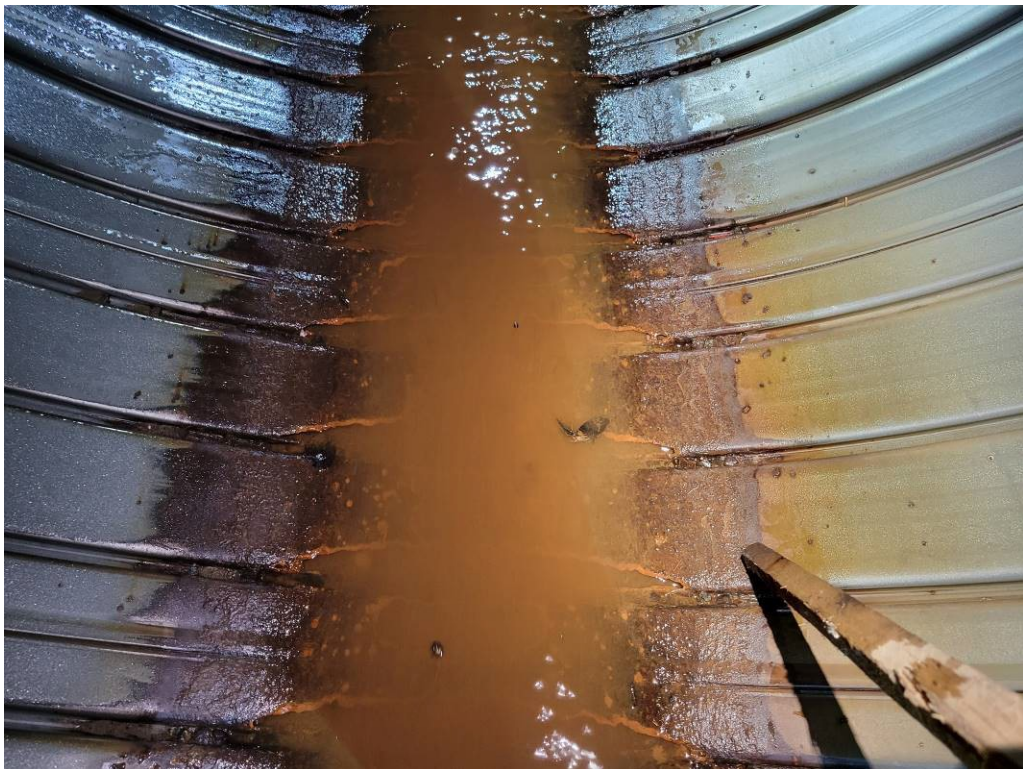


Photo 12 Corrosion at flow line, sta 2+35



Photo 13 Sta 3+27, sever corrosion at flow line. Pipe breached at most flutes

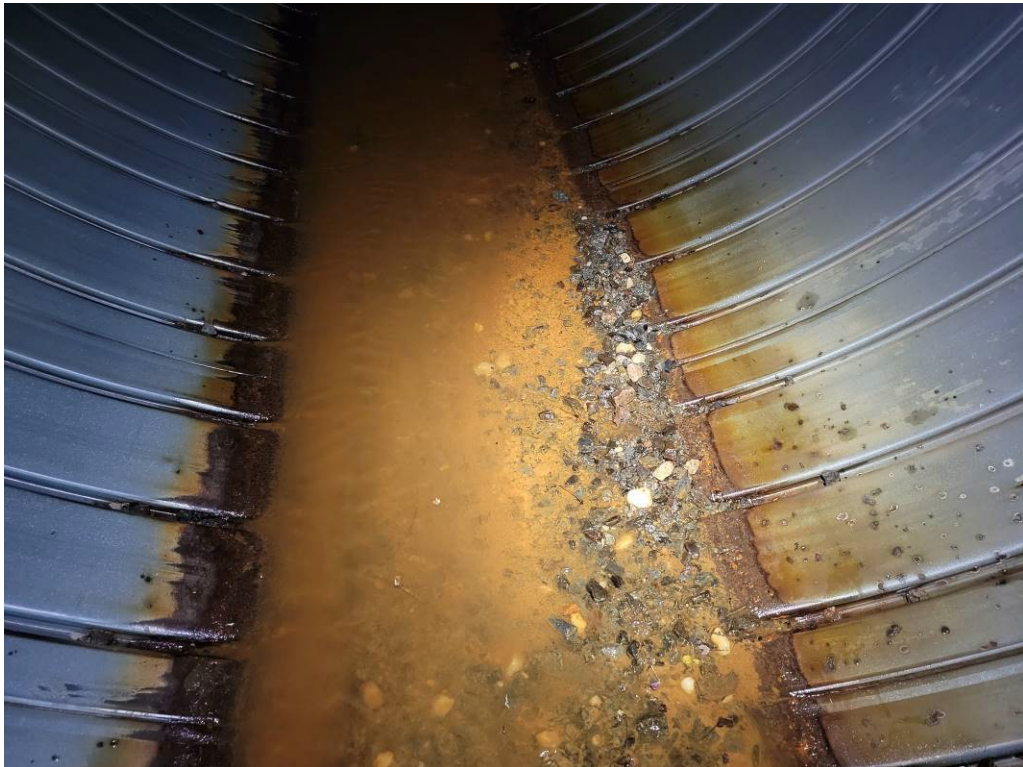


Photo 14 Sta 4+61 Sediment deposited on bottom, ranges to approximately 4" in depth



Photo 15 Sta 4+88 Manhole with water line



Photo 16 Sta 4+94 Severe corrosion breaching the pipe with visual evidence of soil erosion



Photo 17 Sta 6+00 Manhole with 24" lateral



Photo 18 Sta 6+71 Manhole



Photo 19 Sta 6+82, severe corrosion with gasket displaced



Photo 20 Sta 7+33 Manhole at spray liner trial



Photo 21 Spray liner from sta 7+33 to 7+61

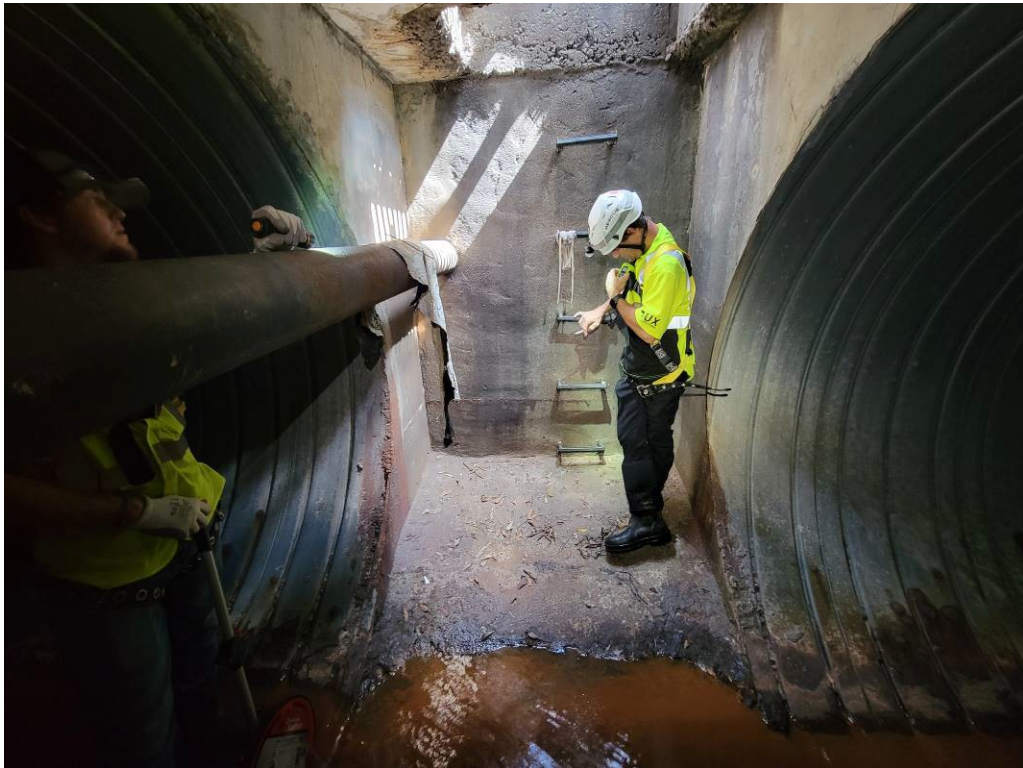


Photo 22 Sta 9+00 Manhole with water line



Photo 23 Sta 9+00 CSP with spotted corrosion, typ of section



Photo 24 Station 9+45 Severe corrosion, breached pipe



Photo 25 Sta 9+46 Severe corrosion. Sample of soil attempted



Photo 26 Sta 10+80 Severe corrosion with CSP flutes displaced



Photo 27 Sta 10+92 Severe corrosion with up to 6" of soil erosion



Photo 28 Sta 11+11 Manhole with water line



Photo 29 Sta 13+56 Manhole basin; severe erosion of concrete floor



Photo 30 Sta 14+00 Moderate corrosion



Photo 31 Sta 14+10 Severe corrosion with penetrations



Photo 32 Sta 14+36 Manhole with water line



Photo 33 Sta 14+62 Significant sediment and debris



Photo 34 Sta 15+54 Manhole with second 84" entrance, 54" exit (presumed to be at or near railroad)



Photo 35 Sta 15+75 4x4 post in 54" pipe



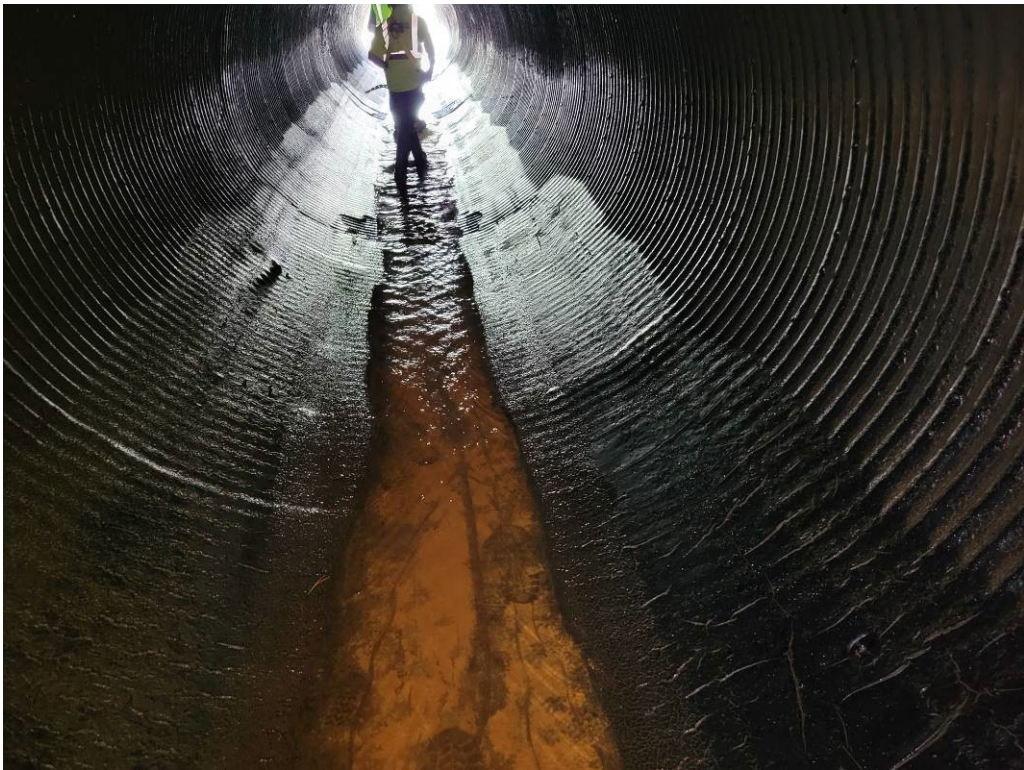
Photo 36 Top of 4x4 post. Appears contoured to fit flutes



Photo 37 Sta 16+00 54" pipe



Photo 38 Sta 18+00 Minor corrosion. Smell of diesel





Measure distance
Click on the map to add to your
path Total distance: 1,960.27 ft
(597.49 m)

City of Greenville/Greenville Utilities Commission Minority and Women Business Enterprise Program

MWBE Guidelines for Professional Service Contracts \$50,000 and above

Policy Statement

It is the policy of the City of Greenville and Greenville Utilities Commission to provide minorities and women equal opportunity for participating in all aspects of the City's and Utilities' contracting and procurement programs, including but not limited to, construction projects, supplies and materials purchases, and professional and personal service contracts.

Goals and Good Faith Efforts

Service providers responding to this solicitation shall comply with the MWBE program by making Good Faith Efforts to achieve the following aspirational goals for participation.

| | CITY | |
|------------------------------|------|-----|
| | MBE | WBE |
| Professional Services | 4% | 4% |

Submitters shall submit MWBE information with their submissions on the forms provided. This information will be subject to verification by the City prior to contract award. **As of July 1, 2009, contractors, subcontractors, suppliers, service providers, or MWBE members of joint ventures intended to satisfy City MWBE goals shall be certified by the NC Office of Historically Underutilized Businesses (NC HUB) only.** Firms qualifying as "WBE" for the City's goals must be designated as a "women-owned business" by the HUB Office. Firms qualifying as "MBE" for the City's goals must be certified in one of the other categories (i.e.: Black, Hispanic, Asian American, American Indian, Disabled, or Socially and Economically Disadvantaged). According to new Statewide Uniform Certification (SWUC) Guidelines, ethnicity supersedes gender; therefore, firms who are certified as both a "WBE" and "MBE" will satisfy the "MBE" category only. **Each goal must be met separately. Exceeding one goal does not satisfy requirements for the other.**

The City shall accept NCDOT certified firms on federally funded projects only.

Please note: A service provider may utilize any firm desired. However, for participation purposes, all MWBE firms who wish to do business *as a minority* must be certified by NC HUB. A complete database of NC HUB certified firms may be found at <http://www.doa.nc.gov/hub/>

Instructions

The submitter shall provide the following forms:

FORM 1—Sub-Service Provider Utilization Plan

This form provides the amount of sub-contracted work proposed on the project for MWBE. This proposed participation is based on the current scope of work. Submitter must turn in this form with submission. If the submitter does not customarily subcontract elements of this type of project, do not complete this form. Instead complete FORM 2.

FORM 2--Statement of Intent to Perform work without Sub-Service Providers

This form provides that the submitter does not customarily subcontract work on this type of project.

Sub-Service Provider Utilization Commitment

Submitted by the selected service provider after negotiation of the contract and prior to Award, this form lists the MWBE firms committed to participate on the project. This commitment will reflect any changes in the Plan due to adjustments in project scope.

NOTE: A firm is expected to maintain the level of participation proposed in FORM 1 – Sub-Service Provider Utilization Plan – unless there is a negotiated change in the service required by the City. A firm is also encouraged to increase MWBE participation in the Utilization Commitment as a result of ongoing Good Faith Efforts.

Proof of Payment Certification

Submitted by the selected service provider with each payment application, listing payments made to subconsultants. This form is not provided with the submission.

In addition to the forms provided above, each service provider must provide a discussion of its diverse business policies and procedures to include the good faith efforts it employed to utilize minority and women-owned firms on this project. This discussion must include:

- 1. Outreach efforts that were employed by the firm to maximize the utilization of MWBE's.*
- 2. A history of MWBE firms used on similar projects; and*
- 3. The percentage participation of MWBE firms on these projects.*

NOTE: Those service providers submitting FORM 2 should discuss and provide documentation to justify 100% performance without the use of subconsultants (both majority and minority) per the statements of the form.

Minimum Compliance Requirements: All written statements, signed forms, or intentions made by the Submitter shall become a part of the agreement between the Submitter and the City for performance of contracts. Failure to comply with any of these statements, signed forms, or intentions or with the minority business guidelines shall constitute a breach of the contract. A finding by the City that any information submitted (either prior to award of the contract or during the performance of the contract) is inaccurate, false, or incomplete, shall also constitute a breach of the contract. Any such breach may result in termination of the contract in accordance with the termination provisions contained in the contract. It shall be solely at the option of the City whether to terminate the contract for breach or not. In determining whether a Submitter has made Good Faith Efforts, the City will evaluate all efforts made by the Submitter and will determine compliance in regard to quantity, intensity, and results of these efforts.

Statement of Intent to Perform work without Sub-Service Providers FORM 2

(Must be included with submission if not subcontracting any portion of work)

We, _____, hereby certify that it is our
intent to perform **100% of the work required** for the _____ contract.
(Project Name)

In making this certification, the Proposer states the following:

- i. It is a normal and customary practice of the Proposer to perform all elements of this type of contract with its own workforce and without the use of subconsultants. *The Proposer has substantiated this by providing documentation of at least three (3) other projects within the last five (5) years on which they have done so.*
 Check box to indicate documentation is attached.
- ii. The Proposer has a valid business reason for self-performing all work on the Contract as opposed to subcontracting with a MWBE. The Proposal must describe the valid business reason for self-performing, and the Proposer must submit with its Bid or Proposal documentation sufficient to demonstrate to the Authority reasonable satisfaction the validity of such assertions.
 Check box to indicate documentation is attached.
- iii. If it should become necessary to subcontract some portion of the work at a later date, the Proposer will notify the City and institute good faith efforts to comply with all requirements of the MWBE program in providing equal opportunities to MWBEs to subcontract the work. **The firm will also submit a Request to Change MWBE Participation Form (even if the final subconsultant is not MWBE).**

The undersigned hereby certifies that he or she has read the terms of this certification and is authorized to bind the Proposer in accordance herewith.

Date: _____

Name & Title of Authorized Representative _____

Signature of Authorized Representative _____

Sub-Service Provider Utilization Commitment

(Must be submitted after contract negotiation and prior to Award)

We _____, do certify that on the
 _____ we will expend a minimum of _____%

of the total dollar amount of the contract with certified **MBE** firms and a minimum of _____% of the total dollar amount of the work with **WBE**.

| Name, Address, & Phone Number of Sub-Service Provider | *MWBE Category | Work description | % of Work |
|---|----------------|------------------|-----------|
| | | | |
| | | | |
| | | | |
| | | | |

*Minority categories: Black, African American (**B**), Hispanic or Latino (**L**), Asian American (**A**) American Indian (**I**), Female (**F**) Socially and Economically Disadvantaged (**S**) Disabled (**D**)

The undersigned will enter into a formal agreement with MWBE firms for work listed in this schedule. Failure to fulfill this commitment may constitute a breach of contract.

The undersigned hereby certifies that he/she has read the terms of this commitment and is authorized to bind the submitter to the commitment herein set forth.

Date: _____

Name & Title of Authorized Representative _____

Signature of Authorized Representative _____

REQUEST TO CHANGE MWBE PARTICIPATION

(Submit changes only if recipient of intent to award letter, continuing through project completion.)

Project: _____

Bidder or Prime Consultant: _____

Name & Title of Authorized Representative: _____

Address: _____ Phone #: _____

_____ Email Address: _____

Original Total Contract Amount: \$ _____

Total Contract Amount (including approved change orders or amendments): \$ _____

Will this request change the dollar amount of the contract? Yes No

If yes, give the total contract amount including change orders and proposed change: \$ _____

The proposed request will do the following to overall MWBE participation (please check one):

Increase Decrease No Change

Name of subconsultant: _____

Service provided: _____

Proposed Action:

Replace subconsultant

Perform work in-house

For the above actions, you must provide one of the following reasons (Please check applicable reason):

The listed MBE/WBE, after having had a reasonable opportunity to do so, fails or refuses to execute a written contract.

The listed MBE/WBE is bankrupt or insolvent.

The listed MBE/WBE fails or refuses to perform his/her subcontract or furnish the listed materials.

The work performed by the listed subconsultant is unsatisfactory according to industry standards and is not in accordance with the plans and specifications; or the subconsultant is substantially delaying or disrupting the progress of the work.

If replacing subconsultant:

Name of replacement subconsultant: _____

Responsive ■ Resourceful ■ Reliable

Is the subconsultant a certified MWBE ? Yes No

If no, please attach documentation of outreach efforts employed by the firm to utilize an MWBE.

Dollar amount of original consultant contract \$ _____

Dollar amount of amended consultant contract \$ _____

Other Proposed Action:

Increase total dollar amount of work

Add as an additional subconsultant*

Decrease total dollar amount of work

Other

Please describe reason for requested action: _____

**If adding additional subconsultant:*

Is the subconsultant a certified MWBE? Yes No

If no, please attach documentation of outreach efforts employed by the firm to utilize an MWBE.

Dollar amount of original consultant contract \$ _____

Dollar amount of amended consultant contract \$ _____

Interoffice Use Only:

Approval Y N

Date _____

Signature _____

Pay Application No. _____

Purchase Order No. _____

Proof of Payment Certification
M/WBE Contractors, Suppliers, Service Providers

Project Name: _____

Prime Service Provider: _____

Current Contract Amount (including change orders): \$ _____

Requested Payment Amount for this Period: \$ _____

Is this the final payment? Yes No

| Firm Name | M/WBE Category* | Total Amount Paid from this Pay Request | Total Contract Amount | Total Amount Remaining |
|------------------|------------------------|--|------------------------------|-------------------------------|
| | | | | |
| | | | | |
| | | | | |
| | | | | |

*Minority categories: Black, African American (**B**), Hispanic or Latino (**L**), Asian American (**A**) American Indian (**I**), Female (**F**) Socially and Economically Disadvantaged (**S**) Disabled (**D**)

Date: _____

Certified By: _____

Print Name, Title

Signature

AGREEMENT
BETWEEN OWNER AND ENGINEER
FOR
PROFESSIONAL SERVICES

Prepared by

ENGINEERS JOINT CONTRACT DOCUMENTS COMMITTEE



ENGINEERS JOINT CONTRACT
DOCUMENTS COMMITTEE

and

Issued and Published Jointly by



AMERICAN COUNCIL OF ENGINEERING COMPANIES

ASSOCIATED GENERAL CONTRACTORS OF AMERICA

AMERICAN SOCIETY OF CIVIL ENGINEERS

PROFESSIONAL ENGINEERS IN PRIVATE PRACTICE
A Practice Division of the
NATIONAL SOCIETY OF PROFESSIONAL ENGINEERS

This Agreement has been prepared for use with the Standard General Conditions of the Construction Contract (EJCDC C-700, 2007 Edition). Their provisions are interrelated, and a change in one may necessitate a change in the other. For guidance on the completion and use of this Agreement, see EJCDC User's Guide to the Owner-Engineer Agreement, EJCDC E-001, 2009 Edition.

Copyright © 2008 National Society of Professional Engineers
1420 King Street, Alexandria, VA 22314-2794
(703) 684-2882
www.nspe.org

American Council of Engineering Companies
1015 15th Street N.W., Washington, DC 20005
(202) 347-7474
www.acec.org

American Society of Civil Engineers
1801 Alexander Bell Drive, Reston, VA 20191-4400
(800) 548-2723
www.asce.org

Associated General Contractors of America
2300 Wilson Boulevard, Suite 400, Arlington, VA 22201-3308
(703) 548-3118
www.agc.org

The copyright for this EJCDC document is owned jointly by the four EJCDC sponsoring organizations and held in trust for their benefit by NSPE.

TABLE OF CONTENTS

| | <u>Page</u> |
|--|-------------|
| <u>ARTICLE 1 – SERVICES OF ENGINEER</u> | 1 |
| <u>1.01 Scope</u> | 1 |
| <u>ARTICLE 2 – OWNER’S RESPONSIBILITIES</u> | 1 |
| <u>2.01 General</u> | 1 |
| <u>ARTICLE 3 – SCHEDULE FOR RENDERING SERVICES</u> | 2 |
| <u>3.01 Commencement</u> | 2 |
| <u>3.02 Time for Completion</u> | 2 |
| <u>ARTICLE 4 – INVOICES AND PAYMENTS</u> | 2 |
| <u>4.01 Invoices</u> | 2 |
| <u>4.02 Payments</u> | 2 |
| <u>ARTICLE 5 – OPINIONS OF COST</u> | 3 |
| <u>5.01 Opinions of Probable Construction Cost</u> | 3 |
| <u>5.02 Designing to Construction Cost Limit</u> | 3 |
| <u>5.03 Opinions of Total Project Costs</u> | 3 |
| <u>ARTICLE 6 – GENERAL CONSIDERATIONS</u> | 3 |
| <u>6.01 Standards of Performance</u> | 3 |
| <u>6.02 Design Without Construction Phase Services</u> | 5 |
| <u>6.03 Use of Documents</u> | 5 |
| <u>6.04 Insurance</u> | 6 |
| <u>6.05 Suspension and Termination</u> | 7 |
| <u>6.06 Controlling Law</u> | 8 |
| <u>6.07 Successors, Assigns, and Beneficiaries</u> | 9 |
| <u>6.08 Dispute Resolution</u> | 9 |
| <u>6.09 Environmental Condition of Site</u> | 9 |
| <u>6.10 Indemnification and Mutual Waiver</u> | 10 |
| <u>6.11 Miscellaneous Provisions</u> | 11 |
| <u>ARTICLE 7 – DEFINITIONS</u> | 11 |
| <u>7.01 Defined Terms</u> | 11 |
| <u>ARTICLE 8 – EXHIBITS AND SPECIAL PROVISIONS</u> | 14 |
| <u>8.01 Exhibits Included</u> | 14 |
| <u>8.02 Total Agreement</u> | 15 |
| <u>8.03 Designated Representatives</u> | 15 |
| <u>8.04 Engineer's Certifications</u> | 15 |



ENGINEERS JOINT CONTRACT
DOCUMENTS COMMITTEE

**AGREEMENT
BETWEEN OWNER AND ENGINEER
FOR
PROFESSIONAL SERVICES**

THIS IS AN AGREEMENT effective as of _____ , _____ (“Effective Date”) between

_____ (“Owner”) and

_____ (“Engineer”).

Owner's Project, of which Engineer's services under this Agreement are a part, is generally identified as follows:

_____ (“Project”).

Engineer's services under this Agreement are generally identified as follows:

Owner and Engineer further agree as follows:

SERVICES OF ENGINEER

Scope

- A. Engineer shall provide, or cause to be provided, the services set forth herein and in Exhibit A.

OWNER’S RESPONSIBILITIES

General

- A. Owner shall have the responsibilities set forth herein and in Exhibit B.
- B. Owner shall pay Engineer as set forth in Exhibit C.
- C. Owner shall be responsible for, and Engineer may rely upon, the accuracy and completeness of all requirements, programs, instructions, reports, data, and other information furnished by Owner to Engineer pursuant to this Agreement. Engineer may use such requirements, programs,

instructions, reports, data, and information in performing or furnishing services under this Agreement.

SCHEDULE FOR RENDERING SERVICES

Commencement

- A. Engineer is authorized to begin rendering services as of the Effective Date.

Time for Completion

- A. Engineer shall complete its obligations within a reasonable time. Specific periods of time for rendering services are set forth or specific dates by which services are to be completed are provided in Exhibit A, and are hereby agreed to be reasonable.
- B. If, through no fault of Engineer, such periods of time or dates are changed, or the orderly and continuous progress of Engineer's services is impaired, or Engineer's services are delayed or suspended, then the time for completion of Engineer's services, and the rates and amounts of Engineer's compensation, shall be adjusted equitably.
- C. If Owner authorizes changes in the scope, extent, or character of the Project, then the time for completion of Engineer's services, and the rates and amounts of Engineer's compensation, shall be adjusted equitably.
- D. Owner shall make decisions and carry out its other responsibilities in a timely manner so as not to delay the Engineer's performance of its services.
- E. If Engineer fails, through its own fault, to complete the performance required in this Agreement within the time set forth, as duly adjusted, then Owner shall be entitled, as its sole remedy, to the recovery of direct damages, if any, resulting from such failure.

INVOICES AND PAYMENTS

Invoices

- A. *Preparation and Submittal of Invoices:* Engineer shall prepare invoices in accordance with its standard invoicing practices and the terms of Exhibit C. Engineer shall submit its invoices to Owner on a monthly basis. Invoices are due and payable within 30 days of receipt.

Payments

- A. *Application to Interest and Principal:* Payment will be credited first to any interest owed to Engineer and then to principal.
- B. *Failure to Pay:* If Owner fails to make any payment due Engineer for services and expenses within 30 days after receipt of Engineer's invoice, then:

amounts due Engineer will be increased at the rate of 1.0% per month (or the maximum rate of interest permitted by law, if less) from said thirtieth day; and

Engineer may, after giving seven days written notice to Owner, suspend services under this Agreement until Owner has paid in full all amounts due for services, expenses, and other related charges. Owner waives any and all claims against Engineer for any such suspension.

- C. *Disputed Invoices:* If Owner contests an invoice, Owner shall promptly advise Engineer of the specific basis for doing so, may withhold only that portion so contested, and must pay the undisputed portion.
- D. *Legislative Actions:* ~~If after the Effective Date any governmental entity takes a legislative action that imposes taxes, fees, or charges on Engineer's services or compensation under this Agreement, then the Engineer may invoice such new taxes, fees, or charges as a Reimbursable Expense to which a factor of 1.0 shall be applied. Owner shall reimburse Engineer for the cost of such invoiced new taxes, fees, and charges; such reimbursement shall be in addition to the compensation to which Engineer is entitled under the terms of Exhibit C.~~

OPINIONS OF COST

Opinions of Probable Construction Cost

- A. Engineer's opinions of probable Construction Cost are to be made on the basis of Engineer's experience and qualifications and represent Engineer's best judgment as an experienced and qualified professional generally familiar with the construction industry. However, because Engineer has no control over the cost of labor, materials, equipment, or services furnished by others, or over contractors' methods of determining prices, or over competitive bidding or market conditions, Engineer cannot and does not guarantee that proposals, bids, or actual Construction Cost will not vary from opinions of probable Construction Cost prepared by Engineer. If Owner requires greater assurance as to probable Construction Cost, Owner must employ an independent cost estimator as provided in Exhibit B.

Designing to Construction Cost Limit

- A. ~~If a Construction Cost limit is established between Owner and Engineer, such Construction Cost limit and a statement of Engineer's rights and responsibilities with respect thereto will be specifically set forth in Exhibit F, "Construction Cost Limit," to this Agreement.~~

Opinions of Total Project Costs

- A. The services, if any, of Engineer with respect to Total Project Costs shall be limited to assisting the Owner in collating the various cost categories which comprise Total Project Costs. Engineer assumes no responsibility for the accuracy of any opinions of Total Project Costs.

GENERAL CONSIDERATIONS

Standards of Performance

- A. *Standard of Care:* The standard of care for all professional engineering and related services performed or furnished by Engineer under this Agreement will be the care and skill ordinarily used by members of the subject profession practicing under similar circumstances at the same

time and in the same locality. Engineer makes no warranties, express or implied, under this Agreement or otherwise, in connection with Engineer's services.

- B. *Technical Accuracy:* Owner shall not be responsible for discovering deficiencies in the technical accuracy of Engineer's services. Engineer shall correct deficiencies in technical accuracy without additional compensation, unless such corrective action is directly attributable to deficiencies in Owner-furnished information.
- C. *Consultants:* Engineer may employ such Consultants as Engineer deems necessary to assist in the performance or furnishing of the services, subject to reasonable, timely, and substantive objections by Owner.
- D. *Reliance on Others:* Subject to the standard of care set forth in Paragraph 6.01.A, Engineer and its Consultants may use or rely upon design elements and information ordinarily or customarily furnished by others, including, but not limited to, specialty contractors, manufacturers, suppliers, and the publishers of technical standards.
- E. *Compliance with Laws and Regulations, and Policies and Procedures:*
 - 1. Engineer and Owner shall comply with applicable Laws and regulations.
 - 2. Prior to the Effective Date, Owner provided to Engineer in writing any and all policies and procedures of Owner applicable to Engineer's performance of services under this Agreement. provided to Engineer in writing. Engineer shall comply with such policies and procedures, subject to the standard of care set forth in Paragraph 6.01.A, and to the extent compliance is not inconsistent with professional practice requirements.
 - 3. This Agreement is based on Laws and Regulations and Owner-provided written policies and procedures as of the Effective Date. Changes after the Effective Date to these Laws and Regulations, or to Owner-provided written policies and procedures, may be the basis for modifications to Owner's responsibilities or to Engineer's scope of services, times of performance, or compensation.
- F. Engineer shall not be required to sign any documents, no matter by whom requested, that would result in the Engineer having to certify, guarantee, or warrant the existence of conditions whose existence the Engineer cannot ascertain. Owner agrees not to make resolution of any dispute with the Engineer or payment of any amount due to the Engineer in any way contingent upon the Engineer signing any such documents.
- G. The general conditions for any construction contract documents prepared hereunder are to be the "Standard General Conditions of the Construction Contract" as prepared by the Engineers Joint Contract Documents Committee (EJCDC C-700, 2007 Edition) unless both parties mutually agree to use other general conditions by specific reference in Exhibit J.
- H. Engineer shall not at any time supervise, direct, control, or have authority over any contractor work, nor shall Engineer have authority over or be responsible for the means, methods, techniques, sequences, or procedures of construction selected or used by any contractor, or the safety precautions and programs incident thereto, for security or safety at the Site, nor for any

failure of a contractor to comply with Laws and Regulations applicable to such contractor's furnishing and performing of its work.

- I. Engineer neither guarantees the performance of any Contractor nor assumes responsibility for any Contractor's failure to furnish and perform the Work in accordance with the Contract Documents.
- J. Engineer shall not provide or have any responsibility for surety bonding or insurance-related advice, recommendations, counseling, or research, or enforcement of construction insurance or surety bonding requirements.
- K. Engineer shall not be responsible for the acts or omissions of any Contractor, Subcontractor, or Supplier, or of any of their agents or employees or of any other persons (except Engineer's own agents, employees, and Consultants) at the Site or otherwise furnishing or performing any Work; or for any decision made regarding the Contract Documents, or any application, interpretation, or clarification, of the Contract Documents, other than those made by Engineer.
- L. While at the Site, Engineer's employees and representatives shall comply with the specific applicable requirements of Contractor's and Owner's safety programs of which Engineer has been informed in writing.

Design Without Construction Phase Services

- A. Engineer shall be responsible only for those Construction Phase services expressly required of Engineer in Exhibit A, Paragraph A1.05. With the exception of such expressly required services, Engineer shall have no design, Shop Drawing review, or other obligations during construction and Owner assumes all responsibility for the application and interpretation of the Contract Documents, review and response to Contractor claims, contract administration, processing Change Orders, revisions to the Contract Documents during construction, construction surety bonding and insurance requirements, construction observation and review, review of payment applications, and all other necessary Construction Phase engineering and professional services. Owner waives all claims against the Engineer that may be connected in any way to Construction Phase engineering or professional services except for those services that are expressly required of Engineer in Exhibit A, Paragraph A1.05.

Use of Documents

- A. All Documents are instruments of service in respect to this Project, and Engineer shall retain an ownership and property interest therein (including the copyright and the right of reuse at the discretion of the Engineer) whether or not the Project is completed. Owner shall not rely in any way on any Document unless it is in printed form, signed or sealed by the Engineer or one of its Consultants.
- B. Either party to this Agreement may rely that data or information set forth on paper (also known as hard copies) that the party receives from the other party by mail, hand delivery, or facsimile, are the items that the other party intended to send. Files in electronic media format of text, data, graphics, or other types that are furnished by one party to the other are furnished only for convenience, not reliance by the receiving party. Any conclusion or information obtained or derived from such electronic files will be at the user's sole risk. If there is a discrepancy between

the electronic files and the hard copies, the hard copies govern. If the parties agree to other electronic transmittal procedures, such are set forth in Exhibit J.

- C. Because data stored in electronic media format can deteriorate or be modified inadvertently or otherwise without authorization of the data's creator, the party receiving electronic files agrees that it will perform acceptance tests or procedures within 60 days, after which the receiving party shall be deemed to have accepted the data thus transferred. Any transmittal errors detected within the 60-day acceptance period will be corrected by the party delivering the electronic files.
- D. When transferring documents in electronic media format, the transferring party makes no representations as to long-term compatibility, usability, or readability of such documents resulting from the use of software application packages, operating systems, or computer hardware differing from those used by the documents' creator.
- E. Owner may make and retain copies of Documents for information and reference in connection with use on the Project by Owner. Engineer grants Owner a limited license to use the Documents on the Project, extensions of the Project, and for related uses of the Owner, subject to receipt by Engineer of full payment for all services relating to preparation of the Documents and subject to the following limitations: (1) Owner acknowledges that such Documents are not intended or represented to be suitable for use on the Project unless completed by Engineer, or for use or reuse by Owner or others on extensions of the Project, on any other project, or for any other use or purpose, without written verification or adaptation by Engineer; (2) any such use or reuse, or any modification of the Documents, without written verification, completion, or adaptation by Engineer, as appropriate for the specific purpose intended, will be at Owner's sole risk and without liability or legal exposure to Engineer or to its officers, directors, members, partners, agents, employees, and Consultants; (3) Owner shall indemnify and hold harmless Engineer and its officers, directors, members, partners, agents, employees, and Consultants from all claims, damages, losses, and expenses, including attorneys' fees, arising out of or resulting from any use, reuse, or modification of the Documents without written verification, completion, or adaptation by Engineer; and (4) such limited license to Owner shall not create any rights in third parties.
- F. If Engineer at Owner's request verifies the suitability of the Documents, completes them, or adapts them for extensions of the Project or for any other purpose, then Owner shall compensate Engineer at rates or in an amount to be agreed upon by Owner and Engineer.

Insurance

- A. Engineer shall procure and maintain insurance as set forth in Exhibit G, "Insurance." Engineer shall cause Owner to be listed as an additional insured on any applicable general liability insurance policy carried by Engineer.
- B. ~~Owner shall procure and maintain insurance as set forth in Exhibit G, "Insurance." Owner shall cause Engineer and its Consultants to be listed as additional insureds on any general liability policies and as loss payees on any property insurance policies carried by Owner which are applicable to the Project.~~
- C. Owner shall require Contractor to purchase and maintain policies of insurance covering workers' compensation, general liability, property damage (other than to the Work itself), motor vehicle damage and injuries, and other insurance necessary to protect Owner's and Engineer's interests in

the Project. Owner shall require Contractor to cause Engineer and its Consultants to be listed as additional insureds with respect to such liability and other insurance purchased and maintained by Contractor for the Project.

- D. ~~Owner and~~ Engineer shall ~~each deliver to the other~~ certificates of insurance evidencing the coverages indicated in Exhibit G. Such certificates shall be furnished prior to commencement of Engineer's services and at renewals thereafter during the life of the Agreement.
- E. All policies of property insurance relating to the Project shall contain provisions to the effect that Engineer's and its Consultants' interests are covered and that in the event of payment of any loss or damage the insurers will have no rights of recovery against Engineer or its Consultants, or any insureds, additional insureds, or loss payees thereunder.
- F. All policies of insurance shall contain a provision or endorsement that the coverage afforded will not be canceled or reduced in limits by endorsement, and that renewal will not be refused, until at least 30 days prior written notice has been given to Owner and Engineer and to each other additional insured (if any) to which a certificate of insurance has been issued.
- G. At any time, Owner may request that Engineer or its Consultants, at Owner's sole expense, provide additional insurance coverage, increased limits, or revised deductibles that are more protective than those specified in Exhibit G. If so requested by Owner, and if commercially available, Engineer shall obtain and shall require its Consultants to obtain such additional insurance coverage, different limits, or revised deductibles for such periods of time as requested by Owner, and Exhibit G will be supplemented to incorporate these requirements.

Suspension and Termination

A. *Suspension:*

By Owner: Owner may suspend the Project for up to 90 days upon seven days written notice to Engineer.

By Engineer: Engineer may, after giving seven days written notice to Owner, suspend services under this Agreement if Engineer's performance has been substantially delayed through no fault of Engineer.

B. *Termination:* The obligation to provide further services under this Agreement may be terminated:

1. For cause,

By either party upon 30 days written notice in the event of substantial failure by the other party to perform in accordance with the terms hereof through no fault of the terminating party.

By Engineer:

upon seven days written notice if Owner demands that Engineer furnish or perform services contrary to Engineer's responsibilities as a licensed professional; or

upon seven days written notice if the Engineer's services for the Project are delayed or suspended for more than 90 days for reasons beyond Engineer's control.

Engineer shall have no liability to Owner on account of such termination.

Notwithstanding the foregoing, this Agreement will not terminate under Paragraph 6.05.B.1.a if the party receiving such notice begins, within seven days of receipt of such notice, to correct its substantial failure to perform and proceeds diligently to cure such failure within no more than 30 days of receipt thereof; provided, however, that if and to the extent such substantial failure cannot be reasonably cured within such 30 day period, and if such party has diligently attempted to cure the same and thereafter continues diligently to cure the same, then the cure period provided for herein shall extend up to, but in no case more than, 60 days after the date of receipt of the notice.

For convenience,

By Owner effective upon Engineer's receipt of notice from Owner.

- C. *Effective Date of Termination:* The terminating party under Paragraph 6.05.B may set the effective date of termination at a time up to 30 days later than otherwise provided to allow Engineer to demobilize personnel and equipment from the Site, to complete tasks whose value would otherwise be lost, to prepare notes as to the status of completed and uncompleted tasks, and to assemble Project materials in orderly files.
- D. *Payments Upon Termination:*
1. In the event of any termination under Paragraph 6.05, Engineer will be entitled to invoice Owner and to receive full payment for all services performed or furnished in accordance with this Agreement and all Reimbursable Expenses incurred through the effective date of termination. Upon making such payment, Owner shall have the limited right to the use of Documents, at Owner's sole risk, subject to the provisions of Paragraph 6.03.E.
 2. In the event of termination by Owner for convenience or by Engineer for cause, Engineer shall be entitled, in addition to invoicing for those items identified in Paragraph 6.05.D.1, to invoice Owner and to payment of a reasonable amount for services and expenses directly attributable to termination, both before and after the effective date of termination, such as reassignment of personnel, costs of terminating contracts with Engineer's Consultants, and other related close-out costs, using methods and rates for Additional Services as set forth in Exhibit C.

Controlling Law

- A. This Agreement is to be governed by the law of the state or jurisdiction in which the Project is located.

Successors, Assigns, and Beneficiaries

- A. Owner and Engineer are hereby bound and the successors, executors, administrators, and legal representatives of Owner and Engineer (and to the extent permitted by Paragraph 6.07.B the assigns of Owner and Engineer) are hereby bound to the other party to this Agreement and to the successors, executors, administrators and legal representatives (and said assigns) of such other party, in respect of all covenants, agreements, and obligations of this Agreement.
- B. Neither Owner nor Engineer may assign, sublet, or transfer any rights under or interest (including, but without limitation, moneys that are due or may become due) in this Agreement without the written consent of the other, except to the extent that any assignment, subletting, or transfer is mandated or restricted by law. Unless specifically stated to the contrary in any written consent to an assignment, no assignment will release or discharge the assignor from any duty or responsibility under this Agreement.
- C. Unless expressly provided otherwise in this Agreement:

Nothing in this Agreement shall be construed to create, impose, or give rise to any duty owed by Owner or Engineer to any Contractor, Subcontractor, Supplier, other individual or entity, or to any surety for or employee of any of them.

All duties and responsibilities undertaken pursuant to this Agreement will be for the sole and exclusive benefit of Owner and Engineer and not for the benefit of any other party.

Owner agrees that the substance of the provisions of this Paragraph 6.07.C shall appear in the Contract Documents.

Dispute Resolution

- A. Owner and Engineer agree to negotiate all disputes between them in good faith for a period of 30 days from the date of notice prior to ~~invoking the procedures of Exhibit H or other provisions of this Agreement,~~ or exercising their rights under law.
- B. ~~If the parties fail to resolve a dispute through negotiation under Paragraph 6.08.A, then either or both may invoke the procedures of Exhibit H. If Exhibit H is not included, or if no dispute resolution method is specified in Exhibit H, then the parties may exercise their rights under law.~~

Environmental Condition of Site

- A. Owner has disclosed to Engineer in writing the existence of all known and suspected Asbestos, PCBs, Petroleum, Hazardous Waste, Radioactive Material, hazardous substances, and other Constituents of Concern located at or near the Site, including type, quantity, and location.
- B. Owner represents to Engineer that to the best of its knowledge no Constituents of Concern, other than those disclosed in writing to Engineer, exist at the Site.
- C. If Engineer encounters or learns of an undisclosed Constituent of Concern at the Site, then Engineer shall notify (1) Owner and (2) appropriate governmental officials if Engineer reasonably concludes that doing so is required by applicable Laws or Regulations.

- D. It is acknowledged by both parties that Engineer's scope of services does not include any services related to Constituents of Concern. If Engineer or any other party encounters an undisclosed Constituent of Concern, or if investigative or remedial action, or other professional services, are necessary with respect to disclosed or undisclosed Constituents of Concern, then Engineer may, at its option and without liability for consequential or any other damages, suspend performance of services on the portion of the Project affected thereby until Owner: (1) retains appropriate specialist consultants or contractors to identify and, as appropriate, abate, remediate, or remove the Constituents of Concern; and (2) warrants that the Site is in full compliance with applicable Laws and Regulations.
- E. If the presence at the Site of undisclosed Constituents of Concern adversely affects the performance of Engineer's services under this Agreement, then the Engineer shall have the option of (1) accepting an equitable adjustment in its compensation or in the time of completion, or both; or (2) terminating this Agreement for cause on 30 days notice.
- F. Owner acknowledges that Engineer is performing professional services for Owner and that Engineer is not and shall not be required to become an "owner" "arranger," "operator," "generator," or "transporter" of hazardous substances, as defined in the Comprehensive Environmental Response, Compensation, and Liability Act (CERCLA), as amended, which are or may be encountered at or near the Site in connection with Engineer's activities under this Agreement.

Indemnification and Mutual Waiver

- A. *Indemnification by Engineer:* To the fullest extent permitted by law, Engineer shall indemnify and hold harmless Owner, and Owner's officers, directors, members, partners, agents, consultants, and employees from reasonable claims, costs, losses, and damages arising out of or relating to the Project, provided that any such claim, cost, loss, or damage is attributable to bodily injury, sickness, disease, or death, or to injury to or destruction of tangible property (other than the Work itself), including the loss of use resulting therefrom, but only to the extent caused by any negligent act or omission of Engineer or Engineer's officers, directors, members, partners, agents, employees, or Consultants. **This indemnification provision is subject to and limited by the provisions, if any, agreed to by Owner and Engineer in Exhibit I, "Limitations of Liability."**
- B. ~~*Indemnification by Owner:* Owner shall indemnify and hold harmless Engineer and its officers, directors, members, partners, agents, employees, and Consultants as required by Laws and Regulations and to the extent (if any) required in Exhibit I, Limitations of Liability.~~
- C. *Environmental Indemnification:* To the fullest extent permitted by law, Owner shall indemnify and hold harmless Engineer and its officers, directors, members, partners, agents, employees, and Consultants from and against any and all claims, costs, losses, and damages (including but not limited to all fees and charges of engineers, architects, attorneys and other professionals, and all court, arbitration, or other dispute resolution costs) caused by, arising out of, relating to, or resulting from a Constituent of Concern at, on, or under the Site, provided that (1) any such claim, cost, loss, or damage is attributable to bodily injury, sickness, disease, or death, or to injury to or destruction of tangible property (other than the Work itself), including the loss of use resulting therefrom, and (2) nothing in this paragraph shall obligate Owner to indemnify any individual or entity from and against the consequences of that individual's or entity's own negligence or willful misconduct.

- D. ~~*Percentage Share of Negligence:* To the fullest extent permitted by law, a party's total liability to the other party and anyone claiming by, through, or under the other party for any cost, loss, or damages caused in part by the negligence of the party and in part by the negligence of the other party or any other negligent entity or individual, shall not exceed the percentage share that the party's negligence bears to the total negligence of Owner, Engineer, and all other negligent entities and individuals.~~
- E. *Mutual Waiver:* To the fullest extent permitted by law, Owner and Engineer waive against each other, and the other's employees, officers, directors, members, agents, insurers, partners, and consultants, any and all claims for or entitlement to special, incidental, indirect, or consequential damages arising out of, resulting from, or in any way related to the Project.

Miscellaneous Provisions

- A. *Notices:* Any notice required under this Agreement will be in writing, addressed to the appropriate party at its address on the signature page and given personally, by facsimile, by registered or certified mail postage prepaid, or by a commercial courier service. All notices shall be effective upon the date of receipt.
- B. *Survival:* All express representations, waivers, indemnifications, and limitations of liability included in this Agreement will survive its completion or termination for any reason.
- C. *Severability:* Any provision or part of the Agreement held to be void or unenforceable under any Laws or Regulations shall be deemed stricken, and all remaining provisions shall continue to be valid and binding upon Owner and Engineer, which agree that the Agreement shall be reformed to replace such stricken provision or part thereof with a valid and enforceable provision that comes as close as possible to expressing the intention of the stricken provision.
- D. *Waiver:* A party's non-enforcement of any provision shall not constitute a waiver of that provision, nor shall it affect the enforceability of that provision or of the remainder of this Agreement.
- E. *Accrual of Claims:* To the fullest extent permitted by law, all causes of action arising under this Agreement shall be deemed to have accrued, and all statutory periods of limitation shall commence, no later than the date of Substantial Completion.

DEFINITIONS

Defined Terms

- A. Wherever used in this Agreement (including the Exhibits hereto) terms (including the singular and plural forms) printed with initial capital letters have the meanings indicated in the text above, in the exhibits, or in the following provisions:

Additional Services – The services to be performed for or furnished to Owner by Engineer in accordance with Part 2 of Exhibit A of this Agreement.

Agreement – This written contract for professional services between Owner and Engineer, including all exhibits identified in Paragraph 8.01 and any duly executed amendments.

Asbestos – Any material that contains more than one percent asbestos and is friable or is releasing asbestos fibers into the air above current action levels established by the United States Occupational Safety and Health Administration.

Basic Services – The services to be performed for or furnished to Owner by Engineer in accordance with Part 1 of Exhibit A of this Agreement.

Construction Contract – The entire and integrated written agreement between Owner and Contractor concerning the Work.

Construction Cost – The cost to Owner of those portions of the entire Project designed or specified by Engineer. Construction Cost does not include costs of services of Engineer or other design professionals and consultants; cost of land or rights-of-way, or compensation for damages to properties; Owner's costs for legal, accounting, insurance counseling or auditing services; interest or financing charges incurred in connection with the Project; or the cost of other services to be provided by others to Owner pursuant to Exhibit B of this Agreement. Construction Cost is one of the items comprising Total Project Costs.

Constituent of Concern – Any substance, product, waste, or other material of any nature whatsoever (including, but not limited to, Asbestos, Petroleum, Radioactive Material, and PCBs) which is or becomes listed, regulated, or addressed pursuant to (a) the Comprehensive Environmental Response, Compensation and Liability Act, 42 U.S.C. §§9601 et seq. ("CERCLA"); (b) the Hazardous Materials Transportation Act, 49 U.S.C. §§1801 et seq.; (c) the Resource Conservation and Recovery Act, 42 U.S.C. §§6901 et seq. ("RCRA"); (d) the Toxic Substances Control Act, 15 U.S.C. §§2601 et seq.; (e) the Clean Water Act, 33 U.S.C. §§1251 et seq.; (f) the Clean Air Act, 42 U.S.C. §§7401 et seq.; and (g) any other federal, state, or local statute, law, rule, regulation, ordinance, resolution, code, order, or decree regulating, relating to, or imposing liability or standards of conduct concerning, any hazardous, toxic, or dangerous waste, substance, or material.

Consultants – Individuals or entities having a contract with Engineer to furnish services with respect to this Project as Engineer's independent professional associates and consultants; subcontractors; or vendors.

Contract Documents – Those items so designated in the Construction Contract, including the Drawings, Specifications, construction agreement, and general and supplementary conditions. Only printed or hard copies of the items listed in the Construction Contract are Contract Documents. Approved Shop Drawings, other Contractor submittals, and the reports and drawings of subsurface and physical conditions are not Contract Documents.

Contractor – The entity or individual with which Owner has entered into a Construction Contract.

Documents – Data, reports, Drawings, Specifications, Record Drawings, and other deliverables, whether in printed or electronic media format, provided or furnished in appropriate phases by Engineer to Owner pursuant to this Agreement.

Drawings – That part of the Contract Documents prepared or approved by Engineer which graphically shows the scope, extent, and character of the Work to be performed by Contractor. Shop Drawings are not Drawings as so defined.

Effective Date – The date indicated in this Agreement on which it becomes effective, but if no such date is indicated, the date on which this Agreement is signed and delivered by the last of the parties to sign and deliver.

Engineer – The individual or entity named as such in this Agreement.

Hazardous Waste – The term Hazardous Waste shall have the meaning provided in Section 1004 of the Solid Waste Disposal Act (42 USC Section 6903) as amended from time to time.

Laws and Regulations; Laws or Regulations – Any and all applicable laws, rules, regulations, ordinances, codes, and orders of any and all governmental bodies, agencies, authorities, and courts having jurisdiction.

Owner – The individual or entity with which Engineer has entered into this Agreement and for which the Engineer's services are to be performed. Unless indicated otherwise, this is the same individual or entity that will enter into any Construction Contracts concerning the Project.

PCBs – Polychlorinated biphenyls.

Petroleum – Petroleum, including crude oil or any fraction thereof which is liquid at standard conditions of temperature and pressure (60 degrees Fahrenheit and 14.7 pounds per square inch absolute), such as oil, petroleum, fuel oil, oil sludge, oil refuse, gasoline, kerosene, and oil mixed with other non-hazardous waste and crude oils.

Project – The total construction of which the Work to be performed under the Contract Documents may be the whole, or a part.

Radioactive Material – Source, special nuclear, or byproduct material as defined by the Atomic Energy Act of 1954 (42 USC Section 2011 et seq.) as amended from time to time.

Record Drawings – Drawings depicting the completed Project, prepared by Engineer as an Additional Service and based solely on Contractor's record copy of all Drawings, Specifications, addenda, change orders, work change directives, field orders, and written interpretations and clarifications, as delivered to Engineer and annotated by Contractor to show changes made during construction.

Reimbursable Expenses – The expenses incurred directly by Engineer in connection with the performing or furnishing of Basic and Additional Services for the Project.

Resident Project Representative – The authorized representative of Engineer assigned to assist Engineer at the Site during the Construction Phase. As used herein, the term Resident Project Representative or "RPR" includes any assistants or field staff of Resident Project Representative agreed to by Owner. The duties and responsibilities of the Resident Project Representative, if any, are as set forth in Exhibit D.

Samples – Physical examples of materials, equipment, or workmanship that are representative of some portion of the Work and which establish the standards by which such portion of the Work will be judged.

Shop Drawings – All drawings, diagrams, illustrations, schedules, and other data or information which are specifically prepared or assembled by or for Contractor and submitted by Contractor to illustrate some portion of the Work.

Site – Lands or areas to be indicated in the Contract Documents as being furnished by Owner upon which the Work is to be performed, including rights-of-way and easements for access thereto, and such other lands furnished by Owner which are designated for the use of Contractor.

Specifications – That part of the Contract Documents consisting of written technical descriptions of materials, equipment, systems, standards, and workmanship as applied to the Work and certain administrative details applicable thereto.

Subcontractor – An individual or entity having a direct contract with Contractor or with any other Subcontractor for the performance of a part of the Work at the Site.

Substantial Completion – The time at which the Work (or a specified part thereof) has progressed to the point where, in the opinion of Engineer, the Work (or a specified part thereof) is sufficiently complete, in accordance with the Contract Documents, so that the Work (or a specified part thereof) can be utilized for the purposes for which it is intended. The terms “substantially complete” and “substantially completed” as applied to all or part of the Work refer to Substantial Completion thereof.

Supplier – A manufacturer, fabricator, supplier, distributor, materialman, or vendor having a direct contract with Contractor or with any Subcontractor to furnish materials or equipment to be incorporated in the Work by Contractor or Subcontractor.

Total Project Costs – The sum of the Construction Cost, allowances for contingencies, and the total costs of services of Engineer or other design professionals and consultants, together with such other Project-related costs that Owner furnishes for inclusion, including but not limited to cost of land, rights-of-way, compensation for damages to properties, Owner’s costs for legal, accounting, insurance counseling and auditing services, interest and financing charges incurred in connection with the Project, and the cost of other services to be provided by others to Owner pursuant to Exhibit B of this Agreement.

Work – The entire construction or the various separately identifiable parts thereof required to be provided under the Contract Documents. Work includes and is the result of performing or providing all labor, services, and documentation necessary to produce such construction, and furnishing, installing, and incorporating all materials and equipment into such construction, all as required by the Contract Documents.

EXHIBITS AND SPECIAL PROVISIONS

Exhibits Included:

- A. Exhibit A, Engineer’s Services.

- B. Exhibit B, Owner's Responsibilities.
- C. Exhibit C, Payments to Engineer for Services and Reimbursable Expenses.
- D. Exhibit D, Duties, Responsibilities and Limitations of Authority of Resident Project Representative.
- E. Exhibit E, Notice of Acceptability of Work.
- F. Exhibit F, Construction Cost Limit.
- G. Exhibit G, Insurance.
- H. ~~Exhibit H, Dispute Resolution.~~
- I. Exhibit I, Limitations of Liability.
- J. Exhibit J, Special Provisions.
- K. Exhibit K, Amendment to Owner-Engineer Agreement.
- L. Exhibit L, **Coronavirus State and Local Fiscal Recovery Funds Addendum.**

[NOTE TO USER: If an exhibit is not included, indicate "not included" after the listed exhibit item]

Total Agreement:

- A. This Agreement, (together with the exhibits identified above) constitutes the entire agreement between Owner and Engineer and supersedes all prior written or oral understandings. This Agreement may only be amended, supplemented, modified, or canceled by a duly executed written instrument based on the format of Exhibit K to this Agreement.

Designated Representatives:

- A. With the execution of this Agreement, Engineer and Owner shall designate specific individuals to act as Engineer's and Owner's representatives with respect to the services to be performed or furnished by Engineer and responsibilities of Owner under this Agreement. Such an individual shall have authority to transmit instructions, receive information, and render decisions relative to the Project on behalf of the respective party whom the individual represents.

Engineer's Certifications:

- A. Engineer certifies that it has not engaged in corrupt, fraudulent, or coercive practices in competing for or in executing the Agreement. For the purposes of this Paragraph 8.04:

"corrupt practice" means the offering, giving, receiving, or soliciting of any thing of value likely to influence the action of a public official in the selection process or in the Agreement execution;

"fraudulent practice" means an intentional misrepresentation of facts made (a) to influence the selection process or the execution of the Agreement to the detriment of Owner, or (b) to deprive Owner of the benefits of free and open competition;

"coercive practice" means harming or threatening to harm, directly or indirectly, persons or their property to influence their participation in the selection process or affect the execution of the Agreement.

IN WITNESS WHEREOF, the parties hereto have executed this Agreement, the Effective Date of which is indicated on page 1.

Owner:
City of Greenville

Engineer:

By: _____

By: _____

Title: Mayor

Title: _____

Date: _____

Date: _____

Signed: _____

Signed: _____

Engineer License or Firm's
Certificate No. _____
State of: _____

Address for giving notices:
Public Works Department
1500 Beatty Street / PO Box 7207
Greenville, NC 27834

Address for giving notices:

Designated Representative (Paragraph 8.03.A):
Kevin Mulligan, P.E.

Designated Representative (Paragraph 8.03.A):

Title: Director of Public Works

Title: _____

Phone Number: 252-329-4522

Phone Number: _____

Facsimile Number: 252-329-3545

Facsimile Number: _____

E-Mail Address: kmulligan@
greenvillenc.gov

E-Mail Address: _____

This is **EXHIBIT A**, consisting of _____ pages, referred to in and part of the **Agreement between Owner and Engineer for Professional Services** dated _____, _____.

Engineer's Services

Article 1 of the Agreement is supplemented to include the following agreement of the parties.

Engineer shall provide Basic and Additional Services as set forth below.

PART 1 – BASIC SERVICES

Study and Report Phase

Engineer shall:

Consult with Owner to define and clarify Owner's requirements for the Project and available data.

Advise Owner of any need for Owner to provide data or services of the types described in Exhibit B which are not part of Engineer's Basic Services.

Identify, consult with, and analyze requirements of governmental authorities having jurisdiction to approve the portions of the Project designed or specified by Engineer, including but not limited to mitigating measures identified in the environmental assessment.

Identify and evaluate [*insert specific number or list here*] alternate solutions available to Owner and, after consultation with Owner, recommend to Owner those solutions which in Engineer's judgment meet Owner's requirements for the Project.

Prepare a report (the "Report") which will, as appropriate, contain schematic layouts, sketches, and conceptual design criteria with appropriate exhibits to indicate the agreed-to requirements, considerations involved, and those alternate solutions available to Owner which Engineer recommends. For each recommended solution Engineer will provide the following, which will be separately itemized: opinion of probable Construction Cost; proposed allowances for contingencies; the estimated total costs of design, professional, and related services to be provided by Engineer and its Consultants; and, on the basis of information furnished by Owner, a summary of allowances for other items and services included within the definition of Total Project Costs.

Perform or provide the following additional Study and Report Phase tasks or deliverables: [*here list any such tasks or deliverables*]

Furnish ___ review copies of the Report and any other deliverables to Owner within ___ calendar days of the Effective Date and review it with Owner. Within ___ calendar days of receipt, Owner shall submit to Engineer any comments regarding the Report and any other deliverables.

Revise the Report and any other deliverables in response to Owner's comments, as appropriate, and furnish ___ copies of the revised Report and any other deliverables to the Owner within ___ calendar days of receipt of Owner's comments.

Engineer's services under the Study and Report Phase will be considered complete on the date when the revised Report and any other deliverables have been delivered to Owner.

Preliminary Design Phase

After acceptance by Owner of the Report and any other deliverables, selection by Owner of a recommended solution and indication of any specific modifications or changes in the scope, extent, character, or design requirements of the Project desired by Owner, and upon written authorization from Owner, Engineer shall:

Prepare Preliminary Design Phase documents consisting of final design criteria, preliminary drawings, outline specifications, and written descriptions of the Project.

Provide necessary field surveys and topographic and utility mapping for design purposes. Utility mapping will be based upon information obtained from utility owners.

Advise Owner if additional reports, data, information, or services of the types described in Exhibit B are necessary and assist Owner in obtaining such reports, data, information, or services.

Based on the information contained in the Preliminary Design Phase documents, prepare a revised opinion of probable Construction Cost, and assist Owner in collating the various cost categories which comprise Total Project Costs.

Perform or provide the following additional Preliminary Design Phase tasks or deliverables:
[here list any such tasks or deliverables]

Furnish ___ review copies of the Preliminary Design Phase documents and any other deliverables to Owner within ___ calendar days of authorization to proceed with this phase, and review them with Owner. Within ___ calendar days of receipt, Owner shall submit to Engineer any comments regarding the Preliminary Design Phase documents and any other deliverables.

Revise the Preliminary Design Phase documents and any other deliverables in response to Owner's comments, as appropriate, and furnish to Owner ___ copies of the revised Preliminary Design Phase documents, revised opinion of probable Construction Cost, and any other deliverables within ___ calendar days after receipt of Owner's comments.

Engineer's services under the Preliminary Design Phase will be considered complete on the date when the revised Preliminary Design Phase documents, revised opinion of probable Construction Cost, and any other deliverables have been delivered to Owner.

Final Design Phase

After acceptance by Owner of the Preliminary Design Phase documents, revised opinion of probable Construction Cost as determined in the Preliminary Design Phase, and any other deliverables subject to any Owner-directed modifications or changes in the scope, extent, character, or design requirements of or for the Project, and upon written authorization from Owner, Engineer shall:

Prepare final Drawings and Specifications indicating the scope, extent, and character of the Work to be performed and furnished by Contractor.

Provide technical criteria, written descriptions, and design data for Owner's use in filing applications for permits from or approvals of governmental authorities having jurisdiction to review or approve the final design of the Project; assist Owner in consultations with such authorities; and revise the Drawings and Specifications in response to directives from such authorities.

Advise Owner of any adjustments to the opinion of probable Construction Cost known to Engineer.

Perform or provide the following additional Final Design Phase tasks or deliverables: [here list any such tasks or deliverables]

Prepare and furnish bidding documents for review by Owner, its legal counsel, and other advisors, and assist Owner in the preparation of other related documents. Within ___ days of receipt, Owner shall submit to Engineer any comments and, subject to the provisions of Paragraph 6.01.G, instructions for revisions.

Revise the bidding documents in accordance with comments and instructions from the Owner, as appropriate, and submit ___ final copies of the bidding documents, a revised opinion of probable Construction Cost, and any other deliverables to Owner within ___ calendar days after receipt of Owner's comments and instructions.

Engineer's services under the Final Design Phase will be considered complete on the date when the submittals required by Paragraph A1.03.A.6 have been delivered to Owner.

In the event that the Work designed or specified by Engineer is to be performed or furnished under more than one prime contract, or if Engineer's services are to be separately sequenced with the work of one or more prime Contractors (such as in the case of fast-tracking), Owner and Engineer shall, prior to commencement of the Final Design Phase, develop a schedule for performance of Engineer's services during the Final Design, Bidding or Negotiating, Construction, and Post-Construction Phases in order to sequence and coordinate properly such services as are applicable to the work under such separate prime contracts. This schedule is to be prepared and included in or become an amendment to Exhibit A whether or not the work under such contracts is to proceed concurrently.

The number of prime contracts for Work designed or specified by Engineer upon which the Engineer's compensation has been established under this Agreement is _____. If more prime contracts are awarded, Engineer shall be entitled to an equitable increase in its compensation under this Agreement.

Bidding or Negotiating Phase

After acceptance by Owner of the bidding documents and the most recent opinion of probable Construction Cost as determined in the Final Design Phase, and upon written authorization by Owner to proceed, Engineer shall:

Assist Owner in advertising for and obtaining bids or proposals for the Work and, where applicable, maintain a record of prospective bidders to whom Bidding Documents have been issued, attend pre-bid conferences, if any, and receive and process contractor deposits or charges for the bidding documents.

Issue addenda as appropriate to clarify, correct, or change the bidding documents.

Provide information or assistance needed by Owner in the course of any negotiations with prospective contractors.

Consult with Owner as to the acceptability of subcontractors, suppliers, and other individuals and entities proposed by prospective contractors for those portions of the Work as to which such acceptability is required by the bidding documents.

If bidding documents require, the Engineer shall evaluate and determine the acceptability of "or equals" and substitute materials and equipment proposed by bidders, but subject to the provisions of paragraph A2.02.A.2 of this Exhibit A.

Attend the Bid opening, prepare Bid tabulation sheets, and assist Owner in evaluating Bids or proposals and in assembling and awarding contracts for the Work.

Perform or provide the following additional Bidding or Negotiating Phase tasks or deliverables: [here list any such tasks or deliverables]

The Bidding or Negotiating Phase will be considered complete upon commencement of the Construction Phase or upon cessation of negotiations with prospective contractors (except as may be required if Exhibit F is a part of this Agreement).

Construction Phase

Upon successful completion of the Bidding and Negotiating Phase, and upon written authorization from Owner, Engineer shall:

General Administration of Construction Contract: Consult with Owner and act as Owner's representative as provided in the Construction Contract. The extent and limitations of the duties, responsibilities, and authority of Engineer as assigned in the Construction Contract shall not be modified, except as Engineer may otherwise agree in writing. All of Owner's instructions to Contractor will be issued through Engineer, which shall have authority to act on behalf of Owner in dealings with Contractor to the extent provided in this Agreement and the Construction Contract except as otherwise provided in writing.

Resident Project Representative (RPR): Provide the services of an RPR at the Site to assist the Engineer and to provide more extensive observation of Contractor's work. Duties,

responsibilities, and authority of the RPR are as set forth in Exhibit D. The furnishing of such RPR's services will not limit, extend, or modify Engineer's responsibilities or authority except as expressly set forth in Exhibit D. [If *Engineer will not be providing the services of an RPR, then delete this Paragraph 2 by inserting the word "DELETED" after the paragraph title, and do not include Exhibit D.*]

Selecting Independent Testing Laboratory: Assist Owner in the selection of an independent testing laboratory to perform the services identified in Exhibit B, Paragraph B2.01.0.

Pre-Construction Conference: Participate in a Pre-Construction Conference prior to commencement of Work at the Site.

Schedules: Receive, review, and determine the acceptability of any and all schedules that Contractor is required to submit to Engineer, including the Progress Schedule, Schedule of Submittals, and Schedule of Values.

Baselines and Benchmarks: As appropriate, establish baselines and benchmarks for locating the Work which in Engineer's judgment are necessary to enable Contractor to proceed.

Visits to Site and Observation of Construction: In connection with observations of Contractor's Work while it is in progress:

Make visits to the Site at intervals appropriate to the various stages of construction, as Engineer deems necessary, to observe as an experienced and qualified design professional the progress of Contractor's executed Work. Such visits and observations by Engineer, and the Resident Project Representative, if any, are not intended to be exhaustive or to extend to every aspect of Contractor's Work in progress or to involve detailed inspections of Contractor's Work in progress beyond the responsibilities specifically assigned to Engineer in this Agreement and the Contract Documents, but rather are to be limited to spot checking, selective sampling, and similar methods of general observation of the Work based on Engineer's exercise of professional judgment, as assisted by the Resident Project Representative, if any. Based on information obtained during such visits and observations, Engineer will determine in general if the Work is proceeding in accordance with the Contract Documents, and Engineer shall keep Owner informed of the progress of the Work.

The purpose of Engineer's visits to, and representation by the Resident Project Representative, if any, at the Site, will be to enable Engineer to better carry out the duties and responsibilities assigned to and undertaken by Engineer during the Construction Phase, and, in addition, by the exercise of Engineer's efforts as an experienced and qualified design professional, to provide for Owner a greater degree of confidence that the completed Work will conform in general to the Contract Documents and that Contractor has implemented and maintained the integrity of the design concept of the completed Project as a functioning whole as indicated in the Contract Documents. Engineer shall not, during such visits or as a result of such observations of Contractor's Work in progress, supervise, direct, or have control over Contractor's Work, nor shall Engineer have authority over or responsibility for the means, methods, techniques, sequences, or procedures of construction selected or used

by Contractor, for security or safety at the Site, for safety precautions and programs incident to Contractor's Work, nor for any failure of Contractor to comply with Laws and Regulations applicable to Contractor's furnishing and performing the Work. Accordingly, Engineer neither guarantees the performance of any Contractor nor assumes responsibility for any Contractor's failure to furnish or perform the Work in accordance with the Contract Documents.

Defective Work: Reject Work if, on the basis of Engineer's observations, Engineer believes that such Work (a) is defective under the standards set forth in the Contract Documents, (b) will not produce a completed Project that conforms to the Contract Documents, or (c) will imperil the integrity of the design concept of the completed Project as a functioning whole as indicated by the Contract Documents.

Clarifications and Interpretations; Field Orders: Issue necessary clarifications and interpretations of the Contract Documents as appropriate to the orderly completion of Contractor's work. Such clarifications and interpretations will be consistent with the intent of and reasonably inferable from the Contract Documents. Subject to any limitations in the Contract Documents, Engineer may issue field orders authorizing minor variations in the Work from the requirements of the Contract Documents.

Change Orders and Work Change Directives: Recommend change orders and work change directives to Owner, as appropriate, and prepare change orders and work change directives as required.

Shop Drawings and Samples: Review and approve or take other appropriate action in respect to Shop Drawings and Samples and other data which Contractor is required to submit, but only for conformance with the information given in the Contract Documents and compatibility with the design concept of the completed Project as a functioning whole as indicated by the Contract Documents. Such reviews and approvals or other action will not extend to means, methods, techniques, sequences, or procedures of construction or to safety precautions and programs incident thereto. Engineer shall meet any Contractor's submittal schedule that Engineer has accepted.

Substitutes and "or-equal": Evaluate and determine the acceptability of substitute or "or-equal" materials and equipment proposed by Contractor, but subject to the provisions of Paragraph A2.02.A.2 of this Exhibit A.

Inspections and Tests: Require such special inspections or tests of Contractor's work as deemed reasonably necessary, and receive and review all certificates of inspections, tests, and approvals required by Laws and Regulations or the Contract Documents. Engineer's review of such certificates will be for the purpose of determining that the results certified indicate compliance with the Contract Documents and will not constitute an independent evaluation that the content or procedures of such inspections, tests, or approvals comply with the requirements of the Contract Documents. Engineer shall be entitled to rely on the results of such tests.

Disagreements between Owner and Contractor: Render formal written decisions on all duly submitted issues relating to the acceptability of Contractor's work or the interpretation of

the requirements of the Contract Documents pertaining to the execution, performance, or progress of Contractor's Work; review each duly submitted Claim by Owner or Contractor, and in writing either deny such Claim in whole or in part, approve such Claim, or decline to resolve such Claim if Engineer in its discretion concludes that to do so would be inappropriate. In rendering such decisions, Engineer shall be fair and not show partiality to Owner or Contractor and shall not be liable in connection with any decision rendered in good faith in such capacity.

Applications for Payment: Based on Engineer's observations as an experienced and qualified design professional and on review of Applications for Payment and accompanying supporting documentation:

Determine the amounts that Engineer recommends Contractor be paid. Such recommendations of payment will be in writing and will constitute Engineer's representation to Owner, based on such observations and review, that, to the best of Engineer's knowledge, information and belief, Contractor's Work has progressed to the point indicated, the Work is generally in accordance with the Contract Documents (subject to an evaluation of the Work as a functioning whole prior to or upon Substantial Completion, to the results of any subsequent tests called for in the Contract Documents, and to any other qualifications stated in the recommendation), and the conditions precedent to Contractor's being entitled to such payment appear to have been fulfilled in so far as it is Engineer's responsibility to observe Contractor's Work. In the case of unit price work, Engineer's recommendations of payment will include final determinations of quantities and classifications of Contractor's Work (subject to any subsequent adjustments allowed by the Contract Documents).

By recommending any payment, Engineer shall not thereby be deemed to have represented that observations made by Engineer to check the quality or quantity of Contractor's Work as it is performed and furnished have been exhaustive, extended to every aspect of Contractor's Work in progress, or involved detailed inspections of the Work beyond the responsibilities specifically assigned to Engineer in this Agreement and the Contract Documents. Neither Engineer's review of Contractor's Work for the purposes of recommending payments nor Engineer's recommendation of any payment including final payment will impose on Engineer responsibility to supervise, direct, or control Contractor's Work in progress or for the means, methods, techniques, sequences, or procedures of construction or safety precautions or programs incident thereto, or Contractor's compliance with Laws and Regulations applicable to Contractor's furnishing and performing the Work. It will also not impose responsibility on Engineer to make any examination to ascertain how or for what purposes Contractor has used the moneys paid on account of the Contract Price, or to determine that title to any portion of the Work in progress, materials, or equipment has passed to Owner free and clear of any liens, claims, security interests, or encumbrances, or that there may not be other matters at issue between Owner and Contractor that might affect the amount that should be paid.

Contractor's Completion Documents: Receive, review, and transmit to Owner maintenance and operating instructions, schedules, guarantees, bonds, certificates or other evidence of insurance required by the Contract Documents, certificates of inspection, tests and

approvals, Shop Drawings, Samples and other data approved as provided under Paragraph A1.05.A.11, and transmit the annotated record documents which are to be assembled by Contractor in accordance with the Contract Documents to obtain final payment. The extent of such review by Engineer will be limited as provided in Paragraph A1.05.A.11.

Substantial Completion: Promptly after notice from Contractor that Contractor considers the entire Work ready for its intended use, in company with Owner and Contractor, visit the Project to determine if the Work is substantially complete. If after considering any objections of Owner, Engineer considers the Work substantially complete, Engineer shall deliver a certificate of Substantial Completion to Owner and Contractor.

Additional Tasks: Perform or provide the following additional Construction Phase tasks or deliverables: [*here list any such tasks or deliverables*].

Final Notice of Acceptability of the Work: Conduct a final visit to the Project to determine if the completed Work of Contractor is acceptable so that Engineer may recommend, in writing, final payment to Contractor. Accompanying the recommendation for final payment, Engineer shall also provide a notice in the form attached hereto as Exhibit E (the "Notice of Acceptability of Work") that the Work is acceptable (subject to the provisions of Paragraph A1.05.A.15.b) to the best of Engineer's knowledge, information, and belief and based on the extent of the services provided by Engineer under this Agreement.

Duration of Construction Phase: The Construction Phase will commence with the execution of the first Construction Contract for the Project or any part thereof and will terminate upon written recommendation by Engineer for final payment to Contractors. If the Project involves more than one prime contract as indicated in Paragraph A1.03.C, then Construction Phase services may be rendered at different times in respect to the separate contracts. Subject to the provisions of Article 3, Engineer shall be entitled to an equitable increase in compensation if Construction Phase services (including Resident Project Representative services, if any) are required after the original date for completion and readiness for final payment of Contractor as set forth in the Construction Contract.

Limitation of Responsibilities: Engineer shall not be responsible for the acts or omissions of any Contractor, Subcontractor or Supplier, or other individuals or entities performing or furnishing any of the Work, for safety or security at the Site, or for safety precautions and programs incident to Contractor's Work, during the Construction Phase or otherwise. Engineer shall not be responsible for the failure of any Contractor to perform or furnish the Work in accordance with the Contract Documents.

Post-Construction Phase

Upon written authorization from Owner during the Post-Construction Phase Engineer shall:

Together with Owner, visit the Project to observe any apparent defects in the Work, assist Owner in consultations and discussions with Contractor concerning correction of any such defects, and make recommendations as to replacement or correction of defective Work, if any.

Together with Owner or Owner's representative, visit the Project within one month before the end of the correction period to ascertain whether any portion of the Work is subject to correction.

1. Perform or provide the following additional Post-Construction Phase tasks or deliverables:
[Here list any such tasks or deliverables]

The Post-Construction Phase services may commence during the Construction Phase and, if not otherwise modified in this Exhibit A, will terminate twelve months after the commencement of the Construction Contract's correction period.

PART 2 – ADDITIONAL SERVICES

A2.01 Additional Services Requiring Owner's Written Authorization

- A. If authorized in writing by Owner, Engineer shall furnish or obtain from others Additional Services of the types listed below.

Preparation of applications and supporting documents (in addition to those furnished under Basic Services) for private or governmental grants, loans, or advances in connection with the Project; preparation or review of environmental assessments and impact statements; review and evaluation of the effects on the design requirements for the Project of any such statements and documents prepared by others; and assistance in obtaining approvals of authorities having jurisdiction over the anticipated environmental impact of the Project.

Services to make measured drawings of or to investigate existing conditions or facilities, or to verify the accuracy of drawings or other information furnished by Owner or others.

Services resulting from significant changes in the scope, extent, or character of the portions of the Project designed or specified by Engineer or its design requirements including, but not limited to, changes in size, complexity, Owner's schedule, character of construction, or method of financing; and revising previously accepted studies, reports, Drawings, Specifications, or Contract Documents when such revisions are required by changes in Laws and Regulations enacted subsequent to the Effective Date or are due to any other causes beyond Engineer's control.

Services resulting from Owner's request to evaluate additional Study and Report Phase alternative solutions beyond those identified in Paragraph A1.01.A.4.

Services required as a result of Owner's providing incomplete or incorrect Project information to Engineer.

Providing renderings or models for Owner's use.

Undertaking investigations and studies including, but not limited to, detailed consideration of operations, maintenance, and overhead expenses; the preparation of financial feasibility and cash flow studies, rate schedules, and appraisals; assistance in obtaining financing for the Project; evaluating processes available for licensing, and assisting Owner in obtaining

- process licensing; detailed quantity surveys of materials, equipment, and labor; and audits or inventories required in connection with construction performed by Owner.
- Furnishing services of Consultants for other than Basic Services.
- Services attributable to more prime construction contracts than specified in Paragraph A1.03.D.
- Services during out-of-town travel required of Engineer other than for visits to the Site or Owner's office.
- Preparing for, coordinating with, participating in and responding to structured independent review processes, including, but not limited to, construction management, cost estimating, project peer review, value engineering, and constructibility review requested by Owner; and performing or furnishing services required to revise studies, reports, Drawings, Specifications, or other Bidding Documents as a result of such review processes.
- Preparing additional Bidding Documents or Contract Documents for alternate bids or prices requested by Owner for the Work or a portion thereof.
- Assistance in connection with Bid protests, rebidding, or renegotiating contracts for construction, materials, equipment, or services, except when such assistance is required by Exhibit F.
- Providing construction surveys and staking to enable Contractor to perform its work other than as required under Paragraph A1.05.A.6, and any type of property surveys or related engineering services needed for the transfer of interests in real property; and providing other special field surveys.
- Providing Construction Phase services beyond the original date for completion and readiness for final payment of Contractor.
- Providing assistance in responding to the presence of any Constituent of Concern at the Site, in compliance with current Laws and Regulations.
- Preparing Record Drawings showing appropriate record information based on Project annotated record documents received from Contractor, and furnishing such Record Drawings to Owner.
- Preparation of operation and maintenance manuals.
- Preparing to serve or serving as a consultant or witness for Owner in any litigation, arbitration, or other dispute resolution process related to the Project.
- Providing more extensive services required to enable Engineer to issue notices or certifications requested by Owner.
- Assistance in connection with the adjusting of Project equipment and systems.

Assistance to Owner in training Owner's staff to operate and maintain Project equipment and systems.

1. Assistance to Owner in developing procedures for (a) control of the operation and maintenance of Project equipment and systems, and (b) related record-keeping.

Overtime work requiring higher than regular rates.

25. Other services performed or furnished by Engineer not otherwise provided for in this Agreement.

A2.02 Additional Services Not Requiring Owner's Written Authorization

- A. Engineer shall advise Owner in advance that Engineer is will immediately commence to perform or furnish the Additional Services of the types listed below. For such Additional Services, Engineer need not request or obtain specific advance written authorization from Owner. Engineer shall cease performing or furnishing such Additional Services upon receipt of written notice from Owner.

Services in connection with work change directives and change orders to reflect changes requested by Owner.

Services in making revisions to Drawings and Specifications occasioned by the acceptance of substitute materials or equipment other than "or-equal" items; services after the award of the Construction Contract in evaluating and determining the acceptability of a proposed "or equal" or substitution which is found to be inappropriate for the Project; evaluation and determination of an excessive number of proposed "or equals" or substitutions, whether proposed before or after award of the Construction Contract.

Services resulting from significant delays, changes, or price increases occurring as a direct or indirect result of materials, equipment, or energy shortages.

Additional or extended services during construction made necessary by (1) emergencies or acts of God endangering the Work (advance notice not required), (2) the presence at the Site of any Constituent of Concern or items of historical or cultural significance, (3) Work damaged by fire or other cause during construction, (4) a significant amount of defective, neglected, or delayed work by Contractor, (5) acceleration of the progress schedule involving services beyond normal working hours, or (6) default by Contractor.

Services (other than Basic Services during the Post-Construction Phase) in connection with any partial utilization of any part of the Work by Owner prior to Substantial Completion.

Evaluating an unreasonable claim or an excessive number of claims submitted by Contractor or others in connection with the Work.

Services during the Construction Phase rendered after the original date for completion of the Work referred to in A1.05.B.

Reviewing a Shop Drawing more than three times, as a result of repeated inadequate submissions by Contractor.

While at the Site, compliance by Engineer and its staff with those terms of Owner's or Contractor's safety program provided to Engineer subsequent to the Effective Date that exceed those normally required of engineering personnel by federal, state, or local safety authorities for similar construction sites.

This is **EXHIBIT B**, consisting of ____ pages, referred to in and part of the **Agreement between Owner and Engineer for Professional Services** dated ____, ____.

Owner's Responsibilities

Article 2 of the Agreement is supplemented to include the following agreement of the parties.

B2.01 In addition to other responsibilities of Owner as set forth in this Agreement, Owner shall at its expense:

- A. Provide Engineer with all criteria and full information as to Owner's requirements for the Project, including design objectives and constraints, space, capacity and performance requirements, flexibility, and expandability, and any budgetary limitations; and furnish copies of all design and construction standards which Owner will require to be included in the Drawings and Specifications; and furnish copies of Owner's standard forms, conditions, and related documents for Engineer to include in the Bidding Documents, when applicable.

Furnish to Engineer any other available information pertinent to the Project including reports and data relative to previous designs, or investigation at or adjacent to the Site.

Following Engineer's assessment of initially-available Project information and data and upon Engineer's request, furnish or otherwise make available such additional Project related information and data as is reasonably required to enable Engineer to complete its Basic and Additional Services. Such additional information or data would generally include the following:

Property descriptions.

Zoning, deed, and other land use restrictions.

Property, boundary, easement, right-of-way, and other special surveys or data, including establishing relevant reference points.

Explorations and tests of subsurface conditions at or contiguous to the Site, drawings of physical conditions relating to existing surface or subsurface structures at the Site, or hydrographic surveys, with appropriate professional interpretation thereof.

Environmental assessments, audits, investigations, and impact statements, and other relevant environmental or cultural studies as to the Project, the Site, and adjacent areas.

Data or consultations as required for the Project but not otherwise identified in the Agreement or the Exhibits thereto.

Give prompt written notice to Engineer whenever Owner observes or otherwise becomes aware of the presence at the Site of any Constituent of Concern, or of any other development that affects the scope or time of performance of Engineer's services, or any defect or nonconformance in Engineer's services, the Work, or in the performance of any Contractor.

Authorize Engineer to provide Additional Services as set forth in Part 2 of Exhibit A of the Agreement as required.

Arrange for safe access to and make all provisions for Engineer to enter upon public and private property as required for Engineer to perform services under the Agreement.

Examine all alternate solutions, studies, reports, sketches, Drawings, Specifications, proposals, and other documents presented by Engineer (including obtaining advice of an attorney, insurance counselor, and other advisors or consultants as Owner deems appropriate with respect to such examination) and render in writing timely decisions pertaining thereto.

Provide reviews, approvals, and permits from all governmental authorities having jurisdiction to approve all phases of the Project designed or specified by Engineer and such reviews, approvals, and consents from others as may be necessary for completion of each phase of the Project.

Recognizing and acknowledging that Engineer's services and expertise do not include the following services, provide, as required for the Project:

Accounting, bond and financial advisory, independent cost estimating, and insurance counseling services.

Legal services with regard to issues pertaining to the Project as Owner requires, Contractor raises, or Engineer reasonably requests.

Such auditing services as Owner requires to ascertain how or for what purpose Contractor has used the moneys paid.

Place and pay for advertisement for Bids in appropriate publications.

Advise Engineer of the identity and scope of services of any independent consultants employed by Owner to perform or furnish services in regard to the Project, including, but not limited to, cost estimating, project peer review, value engineering, and constructibility review.

Furnish to Engineer data as to Owner's anticipated costs for services to be provided by others (including, but not limited to, accounting, bond and financial, independent cost estimating, insurance counseling, and legal advice) for Owner so that Engineer may assist Owner in collating the various cost categories which comprise Total Project Costs.

If Owner designates a construction manager or an individual or entity other than, or in addition to, Engineer to represent Owner at the Site, define and set forth as an attachment to this Exhibit B the duties, responsibilities, and limitations of authority of such other party and the relation thereof to the duties, responsibilities, and authority of Engineer.

If more than one prime contract is to be awarded for the Work designed or specified by Engineer, designate a person or entity to have authority and responsibility for coordinating the activities among the various prime Contractors, and define and set forth the duties, responsibilities, and limitations of authority of such individual or entity and the relation thereof to the duties,

responsibilities, and authority of Engineer as an attachment to this Exhibit B that is to be mutually agreed upon and made a part of this Agreement before such services begin.

Attend the pre-bid conference, bid opening, pre-construction conferences, construction progress and other job related meetings, and Substantial Completion and final payment visits to the Project.

Provide the services of an independent testing laboratory to perform all inspections, tests, and approvals of samples, materials, and equipment required by the Contract Documents, or to evaluate the performance of materials, equipment, and facilities of Owner, prior to their incorporation into the Work with appropriate professional interpretation thereof.

Provide Engineer with the findings and reports generated by the entities providing services to Owner pursuant to this paragraph.

Inform Engineer in writing of any specific requirements of safety or security programs that are applicable to Engineer, as a visitor to the Site.

Perform or provide the following additional services: *[Here list any such additional services]*.

**COMPENSATION DECISION GUIDE
FOR USE WITH EXHIBIT C TO EJCDC E-500, 2008 EDITION**

1. Compensation for Basic Services (not including Resident Project Representative) (as described in Exhibit A, Part I)

Decision Question: Which method of compensation is to be used?

| | Lump Sum | Standard Hourly Rates | Percentage of Construction Costs | Direct Labor Costs Times a Factor | Direct Labor Costs Plus Overhead Plus a Fixed Fee | Salary Costs Times a Factor |
|-----------------------------------|-----------------|------------------------------|---|--|--|------------------------------------|
| Use This Base Compensation Packet | Packet BC-1 | Packet BC-2 | Packet BC-3 | Packet BC-4 | Packet BC-5 | Packet BC-6 |
| Include This Appendix | N/A | Appendices 1 and 2 | N/A | Appendix 1 | Appendix 1 | Appendix 1 |

2. Compensation for Resident Project Representative (as described in Exhibit A, Paragraph A1.05.A.2, and in Exhibit D)

Decision Question: Which method of compensation is to be used?

| | Lump Sum | Standard Hourly Rates | Percentage of Construction Costs | Direct Labor Costs Times a Factor | Salary Costs Times a Factor |
|----------------------------------|-----------------|------------------------------|---|--|------------------------------------|
| Use This RPR Compensation Packet | Packet RPR-1 | Packet RPR-2 | Packet RPR-3 | Packet RPR-4 | Packet RPR-5 |
| Include This Appendix | N/A | Appendices 1 and 2 | N/A | Appendix 1 | Appendix 1 |

3. **Compensation for Additional Services (as described in Exhibit A, Part 2)**

Decision Question: Which method of compensation is to be used?

| | Standard Hourly Rates | Direct Labor Costs Times a Factor | Salary Costs Times a Factor |
|--|------------------------------|--|------------------------------------|
| Use This Additional Services Compensation Packet | Packet AS-1 | Packet AS-2 | Packet AS-3 |
| Include This Appendix | Appendices 1 and 2 | Appendix 1 | Appendix 1 |

Example: If Basic Services (other than RPR) will be compensated using Lump Sum; RPR services using Direct Labor Times a Factor; and Additional Services using Standard Hourly Rates; then use Packet BC-1; Packet RPR-4; Packet AS-1; and Appendices 1 and 2 to form Exhibit C.

SUGGESTED FORMAT
(for use with E-500, 2008 Edition)

This is **EXHIBIT C**, consisting of _____ pages, referred to in and part of the Agreement between Owner and Engineer for Professional Services dated _____, _____.

Payments to Engineer for Services and Reimbursable Expenses
COMPENSATION PACKET BC-1: Basic Services – Lump Sum

Article 2 of the Agreement is supplemented to include the following agreement of the parties:

ARTICLE 2 – OWNER’S RESPONSIBILITIES

C2.01 Compensation for Basic Services (other than Resident Project Representative) – Lump Sum Method of Payment

A. Owner shall pay Engineer for Basic Services set forth in Exhibit A, except for services of Engineer’s Resident Project Representative, if any, as follows:

A Lump Sum amount of \$_____ based on the following estimated distribution of compensation:

| | |
|-------------------------------|---------|
| Study and Report Phase | \$_____ |
| Preliminary Design Phase | \$_____ |
| Final Design Phase | \$_____ |
| Bidding and Negotiating Phase | \$_____ |
| Construction Phase | \$_____ |
| Post-Construction Phase | \$_____ |

Engineer may alter the distribution of compensation between individual phases noted herein to be consistent with services actually rendered, but shall not exceed the total Lump Sum amount unless approved in writing by the Owner.

The Lump Sum includes compensation for Engineer’s services and services of Engineer’s Consultants, if any. Appropriate amounts have been incorporated in the Lump Sum to account for labor, overhead, profit, and Reimbursable Expenses.

The portion of the Lump Sum amount billed for Engineer’s services will be based upon Engineer’s estimate of the percentage of the total services actually completed during the billing period.

B. *Period of Service:* The compensation amount stipulated in Compensation Packet BC-1 is conditioned on a period of service not exceeding _____ months. If such period of service is extended, the compensation amount for Engineer's services shall be appropriately adjusted.

This is **EXHIBIT C**, consisting of _____ pages, referred to in and part of the **Agreement between Owner and Engineer for Professional Services** dated _____, _____.

Payments to Engineer for Services and Reimbursable Expenses
COMPENSATION PACKET BC-2: Basic Services – Standard Hourly Rates

Article 2 of the Agreement is supplemented to include the following agreement of the parties:

ARTICLE 2 – OWNER’S RESPONSIBILITIES

C2.01 Compensation For Basic Services (other than Resident Project Representative) – Standard Hourly Rates Method of Payment

- A. Owner shall pay Engineer for Basic Services set forth in Exhibit A, except for services of Engineer’s Resident Project Representative, if any, as follows:

An amount equal to the cumulative hours charged to the Project by each class of Engineer’s personnel times Standard Hourly Rates for each applicable billing class for all services performed on the Project, plus Reimbursable Expenses and Engineer’s Consultants’ charges, if any.

Engineer’s Reimbursable Expenses Schedule and Standard Hourly Rates are attached to this Exhibit C as Appendices 1 and 2.

The total compensation for services under Paragraph C2.01 is estimated to be \$ _____ based on the following estimated distribution of compensation:

| | |
|------------------------------|----------|
| Study and Report Phase | \$ _____ |
| Preliminary Design Phase | \$ _____ |
| Final Design Phase | \$ _____ |
| Bidding or Negotiating Phase | \$ _____ |
| Construction Phase | \$ _____ |
| Post-Construction Phase | \$ _____ |

Engineer may alter the distribution of compensation between individual phases of the work noted herein to be consistent with services actually rendered, but shall not exceed the total estimated compensation amount unless approved in writing by Owner. See also C2.03.C.2 below.

The total estimated compensation for Engineer’s services included in the breakdown by phases as noted in Paragraph C2.01.A.3 incorporates all labor, overhead, profit, Reimbursable Expenses and Engineer’s Consultants’ charges.

The amounts billed for Engineer's services under Paragraph C2.01 will be based on the cumulative hours charged to the Project during the billing period by each class of Engineer's employees times Standard Hourly Rates for each applicable billing class, plus Reimbursable Expenses and Engineer's Consultants' charges.

The Standard Hourly Rates and Reimbursable Expenses Schedule will be adjusted annually (as of ___) to reflect equitable changes in the compensation payable to Engineer.

C2.02 *Compensation For Reimbursable Expenses*

- A. Owner shall pay Engineer for all Reimbursable Expenses at the rates set forth in Appendix 1 to this Exhibit C.

Reimbursable Expenses include the following categories: transportation and subsistence incidental thereto; providing and maintaining field office facilities including furnishings and utilities; toll telephone calls and mobile phone charges; reproduction of reports, Drawings, Specifications, Bidding Documents, and similar Project-related items in addition to those required under Exhibit A. In addition, if authorized in advance by Owner, Reimbursable Expenses will also include expenses incurred for the use of highly specialized equipment.

The amounts payable to Engineer for Reimbursable Expenses will be the Project-related internal expenses actually incurred or allocated by Engineer, plus all invoiced external Reimbursable Expenses allocable to the Project, the latter multiplied by a factor of _____.

C2.03 *Other Provisions Concerning Payment*

- A. Whenever Engineer is entitled to compensation for the charges of Engineer's Consultants, those charges shall be the amounts billed by Engineer's Consultants to Engineer times a factor of _____.

Factors. The external Reimbursable Expenses and Engineer's Consultants' factors include Engineer's overhead and profit associated with Engineer's responsibility for the administration of such services and costs.

Estimated Compensation Amounts:

Engineer's estimate of the amounts that will become payable for specified services are only estimates for planning purposes, are not binding on the parties, and are not the minimum or maximum amounts payable to Engineer under the Agreement.

When estimated compensation amounts have been stated herein and it subsequently becomes apparent to Engineer that the total compensation amount thus estimated will be exceeded, Engineer shall give Owner written notice thereof, allowing Owner to consider its options, including suspension or termination of Engineer's services for Owner's convenience. Upon notice, Owner and Engineer promptly shall review the matter of services remaining to be performed and compensation for such services. Owner shall either exercise its right to suspend or terminate Engineer's services for Owner's convenience, agree to such compensation exceeding said estimated amount, or agree to a reduction in the remaining services to be rendered by Engineer, so that total compensation for such services will not exceed said estimated amount when such services are completed. If Owner decides not to suspend the Engineer's services during the negotiations and Engineer exceeds the estimated amount before Owner and Engineer have agreed to an increase in the compensation due Engineer or a reduction in the remaining services, then Engineer shall be paid for all services rendered hereunder.

To the extent necessary to verify Engineer's charges and upon Owner's timely request, Engineer shall make copies of such records available to Owner at cost.

This is **EXHIBIT C**, consisting of _____ pages, referred to in and part of the **Agreement between Owner and Engineer for Professional Services** dated _____, _____.

Payments to Engineer for Services and Reimbursable Expenses
COMPENSATION PACKET BC-3: Basic Services – Percentage of Construction Cost

Article 2 of the Agreement is supplemented to include the following agreement of the parties:

ARTICLE 2 – OWNER’S RESPONSIBILITIES

C2.01 Compensation for Basic Services (other than Resident Project Representative) – Percentage of Construction Cost Method of Payment

- A. Owner shall pay Engineer for Basic Services set forth in Exhibit A, except for services of Engineer’s Resident Project Representative, if any, as follows:

General: An amount equal to _____ percent of the Construction Cost. This amount includes compensation for Engineer’s Services and services of Engineer’s Consultants, if any. The percentage of Construction Cost noted herein accounts for labor, overhead, profit, and Reimbursable Expenses.

As a basis for payment to Engineer, Construction Cost will be based on one or more of the following determinations with precedence in the order listed for Work designed or specified by Engineer:

For Work designed or specified and incorporated in the completed Project, the actual final price of the Construction Contract(s), as duly adjusted by change orders.

For Work designed or specified but not constructed, the lowest bona fide Bid received from a qualified bidder for such Work; or, if the Work is not bid, the lowest bona fide negotiated proposal for such Work.

For Work designed or specified but not constructed upon which no such Bid or proposal is received, Engineer’s most recent opinion of probable Construction Cost.

Labor furnished by Owner for the Project will be included in the Construction Cost at current market rates including a reasonable allowance for overhead and profit. Materials and equipment furnished by Owner will be included at current market prices.

For purposes of determining Construction Cost under this provision, no deduction is to be made from Construction Contract pricing on account of any penalty, liquidated damages, or other amounts withheld from payments to Contractor(s).

Progress Payments:

The portion of the amounts billed for Engineer's services which is on account of the Percentage of Construction Cost will be based upon Engineer's estimate of the percentage of the total services actually completed during the billing period.

Upon conclusion of each phase of Basic Services, Owner shall pay such additional amount, if any, as may be necessary to bring total compensation paid during such phase on account of the percentage of Construction Cost to the following estimated percentages of total compensation payable on account of the percentage of Construction Cost for all phases of Basic Services:

| | | |
|------------------------------|-------|------|
| Study and Report Phase | _____ | % |
| Preliminary Design Phase | _____ | % |
| Final Design Phase | _____ | % |
| Bidding or Negotiating Phase | _____ | % |
| Construction Phase | _____ | % |
| | | 100% |

Engineer may alter the distribution of compensation between individual phases of the work noted herein to be consistent with services actually rendered, but shall not exceed the total estimated compensation amount unless approved in writing by Owner.

This is **EXHIBIT C**, consisting of _____ pages, referred to in and part of the **Agreement between Owner and Engineer for Professional Services** dated _____, _____.

Payments to Engineer for Services and Reimbursable Expenses

COMPENSATION PACKET BC-4: Basic Services – Direct Labor Costs Times a Factor

Article 2 of the Agreement is supplemented to include the following agreement of the parties:

ARTICLE 2 – OWNER’S RESPONSIBILITIES

C2.01 Compensation for Basic Services (other than Resident Project Representative) – Direct Labor Costs Times a Factor Method of Payment

- A. Owner shall pay Engineer for Basic Services set forth in Exhibit A, except for services of Engineer’s Resident Project Representative, if any, as follows:

An amount equal to Engineer’s Direct Labor Costs times a factor of _____ for the services of Engineer’s personnel engaged on the Project, plus Reimbursable Expenses, estimated to be \$ _____, and Engineer’s Consultant’s charges, if any, estimated to be \$ _____.

Engineer’s Reimbursable Expenses Schedule is attached to this Exhibit C as Appendix 1.

The total compensation for services under Paragraph C2.01 is estimated to be \$ _____ based on the following distribution of compensation:

| | |
|------------------------------|----------|
| Study and Report Phase | \$ _____ |
| Preliminary Design Phase | \$ _____ |
| Final Design Phase | \$ _____ |
| Bidding or Negotiating Phase | \$ _____ |
| Construction Phase | \$ _____ |
| Post-Construction Phase | \$ _____ |

Engineer may alter the distribution of compensation between individual phases of the work noted herein to be consistent with services actually rendered, but shall not exceed the total estimated compensation amount unless approved in writing by Owner. See C2.03.C.2 below.

The total estimated compensation for Engineer's services included in the breakdown by phases as noted in Paragraph C2.01.A.3, incorporates all labor, overhead, profit, Reimbursable Expenses, and Engineer's Consultant's charges.

The portion of the amounts billed for Engineer's services which are related to services rendered on a Direct Labor Costs times a Factor basis will be billed based on the applicable Direct Labor Costs for the cumulative hours charged to the Project by Engineer's principals and employees multiplied by the above-designated factor, plus Reimbursable Expenses and Engineer's Consultant's charges incurred during the billing period.

Direct Labor Costs means salaries and wages paid to employees but does not include payroll-related costs or benefits.

The Direct Labor Costs and the factor applied to Direct Labor Costs will be adjusted annually (as of ___) to reflect equitable changes to the compensation payable to Engineer.

C2.02 *Compensation for Reimbursable Expenses*

- A. Owner shall pay Engineer for all Reimbursable Expenses at the rates set forth in Appendix 1 to this Exhibit C.

Reimbursable Expenses include the following categories: transportation and subsistence incidental thereto; providing and maintaining field office facilities including furnishings and utilities; toll telephone calls and mobile phone charges; reproduction of reports, Drawings, Specifications, Bidding Documents, and similar Project-related items in addition to those required under Exhibit A. In addition, if authorized in advance by Owner, Reimbursable Expenses will also include expenses incurred for the use of highly specialized equipment.

The amounts payable to Engineer for Reimbursable Expenses will be the Project-related internal expenses actually incurred or allocated by Engineer, plus all invoiced external Reimbursable Expenses allocable to the Project, the latter multiplied by a factor of _____.

The Reimbursable Expenses Schedule will be adjusted annually (as of ___) to reflect equitable changes in the compensation payable to Engineer.

C2.03 *Other Provisions Concerning Payment*

- A. Whenever Engineer is entitled to compensation for the charges of Engineer's Consultants, those charges shall be the amounts billed by Engineer's Consultants to Engineer times a factor of _____.

Factors: The external Reimbursable Expenses and Engineer's Consultant's factors include Engineer's overhead and profit associated with Engineer's responsibility for the administration of such services and costs.

Estimated Compensation Amounts:

Engineer's estimate of the amounts that will become payable for specified services are only estimates for planning purposes, are not binding on the parties, and are not the minimum or maximum amounts payable to Engineer under the Agreement.

When estimated compensation amounts have been stated herein and it subsequently becomes apparent to Engineer that the total compensation amount thus estimated will be exceeded, Engineer shall give Owner written notice thereof, allowing Owner to consider its options, including suspension or termination of Engineer's services for Owner's convenience. Upon notice, Owner and Engineer promptly shall review the matter of services remaining to be performed and compensation for such services. Owner shall either exercise its right to suspend or terminate Engineer's services for Owner's convenience, agree to such compensation exceeding said estimated amount, or agree to a reduction in the remaining services to be rendered by Engineer, so that total compensation for such services will not exceed said estimated amount when such services are completed. If Owner decides not to suspend Engineer's services during negotiations and Engineer exceeds the estimated amount before Owner and Engineer have agreed to an increase in the compensation due Engineer or a reduction in the remaining services, then Engineer shall be paid for all services rendered hereunder.

To the extent necessary to verify Engineer's charges and upon Owner's timely request, Engineer shall make copies of such records available to Owner at cost.

This is **EXHIBIT C**, consisting of _____ pages, referred to in and part of the **Agreement between Owner and Engineer for Professional Services** dated _____, _____.

Payments to Engineer for Services and Reimbursable Expenses
COMPENSATION PACKET BC-5: Basic Services – Direct Labor Costs Plus Overhead Plus a Fixed Fee

Article 2 of the Agreement is supplemented to include the following agreement of the parties:

ARTICLE 2 – OWNER’S RESPONSIBILITIES

C2.01 Compensation for Basic Services (other than Resident Project Representative) – Direct Labor Costs Plus Overhead Plus a Fixed Fee Method of Payment

- A. Owner shall pay Engineer for Basic Services set forth in Exhibit A, except for services of Engineer’s Resident Project Representative, if any, as follows:

An amount equal to Engineer’s Direct Labor Costs plus overhead for the services of Engineer’s personnel engaged directly on the Project, plus Reimbursable Expenses estimated to be \$ _____, plus Engineer’s Consultant’s charges, if any, estimated to be \$ _____, plus a fixed fee of \$ _____.

Engineer’s Reimbursable Expenses Schedule is attached to this Exhibit C as Appendix 1.

The total compensation for services under Paragraph C2.01 is estimated to be \$ _____ based on the following estimated distribution of compensation:

| | |
|------------------------------|----------|
| Study and Report Phase | \$ _____ |
| Preliminary Design Phase | \$ _____ |
| Final Design Phase | \$ _____ |
| Bidding or Negotiating Phase | \$ _____ |
| Construction Phase | \$ _____ |
| Post-Construction Phase | \$ _____ |

Engineer may alter the distribution of compensation between individual phases of the work noted herein to be consistent with services actually rendered, but shall not exceed the total estimated compensation amount unless approved in writing by Owner. See Paragraph C2.03.C.2 below.

The total estimated compensation for Engineer's services, included in the breakdown by phases as noted in Paragraph C2.01.A.3, incorporates all labor, overhead, fixed fees, Reimbursable Expenses, and Engineer's Consultant's charges.

The portion of the amounts billed for Engineer's services will be based on the applicable Direct Labor Costs for the cumulative hours charged to the Project during the billing period by Engineer's employees plus overhead, Reimbursable Expenses, Engineer's Consultant's charges, and the proportionate portion of the fixed fee.

Direct Labor Costs means salaries and wages paid to employees but does not include payroll-related costs or benefits.

Overhead includes the cost of customary and statutory benefits including, but not limited to, social security contributions, unemployment, excise and payroll taxes, workers' compensation, health and retirement benefits, bonuses, sick leave, vacation, and holiday pay applicable thereto; the cost of general and administrative overhead which includes salaries and wages of employees engaged in business operations not directly chargeable to projects, plus non-Project operating costs, including but not limited to, business taxes, legal, rent, utilities, office supplies, insurance, and other operating costs. Overhead shall be computed as a percentage of Direct Labor Costs. Fixed fee is the lump sum amount paid to Engineer by Owner as margin or profit and will only be adjusted by an amendment to this agreement.

Direct Labor Costs and Overhead applied to Direct Labor Costs will be adjusted annually (as of _____) to reflect equitable changes in the compensation payable to Engineer.

C2.02 *Compensation for Reimbursable Expenses*

- A. Owner shall pay Engineer for all Reimbursable Expenses at the rates set forth in Appendix 1 to this Exhibit C.

Reimbursable Expenses include the following categories: transportation and subsistence incidental thereto; providing and maintaining field office facilities including furnishings and utilities; toll telephone calls and mobile phone charges, reproduction of reports, Drawings, Specifications, Bidding Documents, and similar Project-related items in addition to those required under Exhibit A. In addition, if authorized in advance by Owner, Reimbursable Expenses will also include expenses incurred for the use of highly specialized equipment.

The amounts payable to Engineer for Reimbursable Expenses will be the Project-related internal expenses actually incurred or allocated by Engineer, plus all invoiced external Reimbursable Expenses allocable to the Project, the latter multiplied by a factor of _____.

The Reimbursable Expenses Schedule will be adjusted annually (as of _____) to reflect equitable changes in the compensation payable to Engineer.

C2.03 *Other Provisions Concerning Payment*

- A. Whenever Engineer is entitled to compensation for the charges of Engineer's Consultants, those charges shall be the amounts billed by Engineer's Consultants to Engineer times a factor of _____.

Factors: The external Reimbursable Expenses and Engineer's Consultant's factors include Engineer's overhead and profit associated with Engineer's responsibility for the administration of such services and costs.

Estimated Compensation Amounts:

Engineer's estimate of the amounts that will become payable for specified services are only estimates for planning purposes, are not binding on the parties, and are not the minimum or maximum amounts payable to Engineer under the Agreement.

When estimated compensation amounts have been stated herein and it subsequently becomes apparent to Engineer that the total compensation amount thus estimated will be exceeded, Engineer shall give Owner written notice thereof, allowing Owner to consider its options, including suspension or termination of Engineer's services for Owner's convenience. Upon notice, Owner and Engineer promptly shall review the matter of services remaining to be performed and compensation for such services. Owner shall either exercise its right to suspend or terminate Engineer's services for Owner's convenience, agree to such compensation exceeding said estimated amount, or agree to a reduction in the remaining services to be rendered by Engineer, so that total compensation for such services will not exceed said estimated amount when such services are completed. If Owner decides not to suspend Engineer's services during negotiations and Engineer exceeds the estimated amount before Owner and Engineer have agreed to an increase in the compensation due Engineer or a reduction in the remaining services, then Engineer shall be paid for all services rendered hereunder.

To the extent necessary to verify Engineer's charges and upon Owner's timely request, Engineer shall make copies of such records available to Owner at cost.

This is **EXHIBIT C**, consisting of _____ pages, referred to in and part of the **Agreement between Owner and Engineer for Professional Services** dated _____, _____.

Payments to Engineer for Services and Reimbursable Expenses
COMPENSATION PACKET BC-6: Basic Services – Salary Costs Times a Factor

Article 2 of the Agreement is supplemented to include the following agreement of the parties:

ARTICLE 2 – OWNER’S RESPONSIBILITIES

C2.01 Compensation for Basic Services (other than Resident Project Representative) – Salary Costs Times a Factor Method of Payment

- A. Owner shall pay Engineer for Basic Services set forth in Exhibit A, except for services of Engineer’s Resident Project Representative, if any, as follows:

An amount equal to Engineer’s Salary Costs times a factor of _____ for all Basic Services by principals and employees engaged directly on the Project, plus Reimbursable Expenses, estimated to be \$ _____, and Engineer’s Consultant’s charges, if any, estimated to be \$ _____.

Engineer’s Reimbursable Expenses Schedule is attached to this Exhibit C as Appendix 1.

The total compensation for services under Paragraph C2.01 is estimated to be \$ _____ based on the following assumed distribution of compensation:

| | |
|------------------------------|----------|
| Study and Report Phase | \$ _____ |
| Preliminary Design Phase | \$ _____ |
| Final Design Phase | \$ _____ |
| Bidding or Negotiating Phase | \$ _____ |
| Construction Phase | \$ _____ |
| Post-Construction Phase | \$ _____ |

Engineer may alter the distribution of compensation between individual phases of the work noted herein to be consistent with services actually rendered, but shall not exceed the total estimated compensation amount unless approved in writing by Owner. See also Paragraph C2.03.C.2 below.

The total compensation for Engineer’s services, included in the breakdown by phases as noted in Paragraph C2.01.A.3, incorporates all labor, overhead, profit, Reimbursable Expenses, and Engineer’s Consultant’s charges.

The portion of the amounts billed for Engineer's services will be based on the applicable Salary Costs for the cumulative hours charged to the Project incurred during the billing period by Engineer's principals and employees multiplied by the above designated factor, plus Reimbursable Expenses and Engineer's Consultant's charges.

Salary Costs means salaries and wages paid to Engineer's employees plus the cost of customary and statutory benefits including, but not limited to, social security contributions, unemployment, excise and payroll taxes, workers' compensation, health and retirement benefits, bonuses, sick leave, vacation, and holiday pay applicable thereto.

The Salary Costs and the factor applied to Salary Costs will be adjusted annually (as of ___) to reflect equitable changes in the compensation payable to Engineer.

C2.02 *Compensation for Reimbursable Expenses*

- A. Owner shall pay Engineer for all Reimbursable Expenses at the rates set forth in Appendix 1 to this Exhibit C.

Reimbursable Expenses include the following categories: transportation and subsistence incidental thereto; providing and maintaining field office facilities including furnishings and utilities; toll telephone calls and mobile phone charges; reproduction of reports, Drawings, Specifications, Bidding Documents, and similar Project-related items in addition to those required under Exhibit A. In addition, if authorized in advance by Owner, Reimbursable Expenses will also include expenses incurred for the use of highly specialized equipment.

The amounts payable to Engineer for Reimbursable Expenses will be the Project-related internal expenses actually incurred or allocated by Engineer, plus all invoiced external Reimbursable Expenses allocable to the Project, the latter multiplied by a factor of _____.

The Reimbursable Expenses Schedule will be adjusted annually (as of ___) to reflect equitable changes in the compensation payable to Engineer.

C2.03 *Other Provisions Concerning Payment*

- A. Whenever Engineer is entitled to compensation for the charges of Engineer's Consultants, those charges shall be the amounts billed by Engineer's Consultants to Engineer times a factor of _____.

Factors: The external Reimbursable Expenses and Engineer's Consultant's factors include Engineer's overhead and profit associated with Engineer's responsibility for the administration of such services and costs.

Estimated Compensation Amounts:

Engineer's estimate of the amounts that will become payable for specified services are only estimates for planning purposes, are not binding on the parties, and are not the minimum or maximum amounts payable to Engineer under the Agreement.

When estimated compensation amounts have been stated herein and it subsequently becomes apparent to Engineer that the total compensation amount thus estimated will be exceeded, Engineer shall give Owner written notice thereof, allowing Owner to consider its options, including suspension or termination of Engineer's services for Owner's convenience. Upon notice, Owner and Engineer promptly shall review the matter of services remaining to be performed and compensation for such services. Owner shall either exercise its right to suspend or terminate Engineer's services for Owner's convenience, agree to such compensation exceeding said estimated amount, or agree to a reduction in the remaining services to be rendered by Engineer, so that total compensation for such services will not exceed said estimated amount when such services are completed. If Owner decides not to suspend Engineer's services during negotiations and Engineer exceeds the estimated amount before Owner and Engineer have agreed to an increase in the compensation due Engineer or a reduction in the remaining services, then Engineer shall be paid for all services rendered hereunder.

To the extent necessary to verify Engineer's charges and upon Owner's timely request, Engineer shall make copies of such records available to Owner at cost.

**COMPENSATION PACKET RPR-1:
Resident Project Representative – Lump Sum**

Article 2 of the Agreement is supplemented to include the following agreement of the parties:

C2.04 Compensation for Resident Project Representative Basic Services – Lump Sum Method of Payment

A. Owner shall pay Engineer for Resident Project Representative Basic Services as follows:

Resident Project Representative Services: For services of Engineer’s Resident Project Representative, if any, under Paragraph A1.05 of Exhibit A, the Lump Sum amount of \$_____. The Lump Sum includes compensation for the Resident Project Representative’s services, and for the services of any direct assistants to the Resident Project Representative. Appropriate amounts have been incorporated in the Lump Sum to account for labor, overhead, profit, and Reimbursable Expenses related to the Resident Project Representative’s Services.

Resident Project Representative Schedule: The Lump Sum amount set forth in Paragraph C2.04.A.1 above is based on full-time RPR services on an eight-hour workday Monday through Friday over a ___ day construction schedule. Modifications to the schedule shall entitle Engineer to an equitable adjustment of compensation for RPR services.

**COMPENSATION PACKET RPR-2:
Resident Project Representative – Standard Hourly Rates**

Article 2 of the Agreement is supplemented to include the following agreement of the parties:

*C2.04 Compensation for Resident Project Representative Basic Services – Standard Hourly Rates
Method of Payment*

A. *Owner shall pay Engineer for Resident Project Representative Basic Services as follows:*

Resident Project Representative Services: For services of Engineer's Resident Project Representative under Paragraph A1.05A of Exhibit A, an amount equal to the cumulative hours charged to the Project by each class of Engineer's personnel times Standard Hourly Rates for each applicable billing class for all Resident Project Representative services performed on the Project, plus related Reimbursable Expenses and Engineer's Consultant's charges, if any. The total compensation under this Paragraph is estimated to be \$_____ based upon full-time RPR services on an eight-hour workday, Monday through Friday, over a ___ day construction schedule.

Compensation for Reimbursable Expenses:

For those Reimbursable Expenses that are not accounted for in the compensation for Basic Services under Paragraph C2.01, and are directly related to the provision of Resident Project Representative or Post-Construction Basic Services, Owner shall pay Engineer at the rates set forth in Appendix 1 to this Exhibit C.

Reimbursable Expenses include the following categories: transportation and subsistence incidental thereto; ; providing and maintaining field office facilities including furnishings and utilities; subsistence and transportation of Resident Project Representative and assistants; toll telephone calls and mobile phone charges; reproduction of reports, Drawings, Specifications, Bidding Documents, and similar Project-related items in addition to those required under Exhibit A. In addition, if authorized in advance by Owner, Reimbursable Expenses will also include expenses incurred for the use of highly specialized equipment.

The amounts payable to Engineer for Reimbursable Expenses, if any, will be those internal expenses related to the Resident Project Representative Basic Services that are actually incurred or allocated by Engineer, plus all invoiced external Reimbursable Expenses allocable to such services, the latter multiplied by a factor of _____.

The Reimbursable Expenses Schedule will be adjusted annually (as of ___) to reflect equitable changes in the compensation payable to Engineer.

Other Provisions Concerning Payment Under this Paragraph C2.04:

Whenever Engineer is entitled to compensation for the charges of Engineer's Consultants, those charges shall be the amounts billed by Engineer's Consultants to Engineer times a factor of _____.

Factors: The external Reimbursable Expenses and Engineer's Consultant's factors include Engineer's overhead and profit associated with Engineer's responsibility for the administration of such services and costs.

Estimated Compensation Amounts:

Engineer's estimate of the amounts that will become payable for specified services are only estimates for planning purposes, are not binding on the parties, and are not the minimum or maximum amounts payable to Engineer under the Agreement.

When estimated compensation amounts have been stated herein and it subsequently becomes apparent to Engineer that the total compensation amount thus estimated will be exceeded, Engineer shall give Owner written notice thereof, allowing Owner to consider its options, including suspension or termination of Engineer's services for Owner's convenience. Upon notice Owner and Engineer promptly shall review the matter of services remaining to be performed and compensation for such services. Owner shall either exercise its right to suspend or terminate Engineer's services for Owner's convenience, agree to such compensation exceeding said estimated amount, or agree to a reduction in the remaining services to be rendered by Engineer, so that total compensation for such services will not exceed said estimated amount when such services are completed. If Owner decides not to suspend Engineer's services during negotiations and Engineer exceeds the estimated amount before Owner and Engineer have agreed to an increase in the compensation due Engineer or a reduction in the remaining services, then Engineer shall be paid for all services rendered hereunder.

To the extent necessary to verify Engineer's charges and upon Owner's timely request, Engineer shall make copies of such records available to Owner at cost.

**COMPENSATION PACKET RPR-3:
Resident Project Representative – Percentage of Construction Cost**

Article 2 of the Agreement is supplemented to include the following agreement of the parties:

C2.04 *Compensation for Resident Project Representative Basic Services – Percentage of Construction Cost Method of Payment*

A. Owner shall pay Engineer for:

Resident Project Representative Services: For services of Engineer's Resident Project Representative under Paragraph A1.05 of Exhibit A of the Agreement, an amount equal to _____ percent of the Construction Cost. This amount includes compensation for Resident Project Representative's services, and those of any assistants to the Resident Project Representative. The percentage of Construction Cost noted herein accounts for labor, overhead, profit, and Reimbursable Expenses. The total compensation under this Paragraph is estimated to be \$ _____, based upon full-time RPR services on an eight-hour workday, Monday through Friday, over a ___ day construction schedule.

As a basis for payment to Engineer, Construction Cost will be based on one or more of the following determinations with precedence in the order listed for Work designed or specified by Engineer.

For Work designed or specified and incorporated in the completed Project, the actual final price of the Construction Contract(s), as duly adjusted by change orders.

For Work designed or specified but not constructed, the lowest bona fide Bid received from a qualified bidder for such Work; or, if the Work is not Bid, the lowest bona fide negotiated proposal for such Work.

For Work designed or specified but not constructed upon which no such Bid or proposal is received, Engineer's most recent opinion of probable Construction Cost.

Labor furnished by Owner for the Project will be included in the Construction Cost at current market rates including a reasonable allowance for overhead and profit. Materials and equipment furnished by Owner will be included at current market prices.

For purposes of determining Construction Cost under this provision, no deduction is to be made from Construction Contract price on account of any penalty, liquidated damages, or other amounts withheld from payments to Contractor(s).

**COMPENSATION PACKET RPR-4:
Resident Project Representative – Direct Labor Times a Factor**

Article 2 of the Agreement is supplemented to include the following agreement of the parties:

C2.04 Compensation for Resident Project Representative Basic Services – Direct Labor Costs Times a Factor Method of Payment

A. Owner shall pay Engineer for:

Resident Project Representative Services: For services of Engineer's Resident Project Representative under Paragraph A1.05.A.2 of Exhibit A of the Agreement, an amount equal to Engineer's Direct Labor Costs times a factor of _____ for the services of Engineer's personnel engaged directly in resident Project representation, plus related Reimbursable Expenses and Engineer's Consultant's charges, if any. The total compensation under this paragraph is estimated to be \$_____, based upon full-time RPR services on an eight-hour workday, Monday through Friday, over a ___ day construction schedule.

Compensation for Reimbursable Expenses:

For those Reimbursable Expenses that are not accounted for in the compensation for Basic Services under Paragraph C2.01, and are directly related to the provision of Resident Project Representative or Post-Construction Basic Services, Owner shall pay Engineer at the rates set forth in Appendix 1 to this Exhibit C.

Reimbursable Expenses include the following categories: transportation and subsistence incidental thereto; ; providing and maintaining field office facilities including furnishings and utilities; subsistence and transportation of Resident Project Representative and assistants; toll telephone calls and mobile phone charges; reproduction of reports, Drawings, Specifications, Bidding Documents, and similar Project-related items in addition to those required under Exhibit A. In addition, if authorized in advance by Owner, Reimbursable Expenses will also include expenses incurred for computer time and the use of other highly specialized equipment.

The amounts payable to Engineer for Reimbursable Expenses, if any, will be those internal expenses related to the Resident Project Representative Basic Services that are actually incurred or allocated by Engineer, plus all invoiced external Reimbursable Expenses allocable to such services, the latter multiplied by a factor of _____.

The Reimbursable Expenses Schedule will be adjusted annually (as of _____) to reflect equitable changes in the compensation payable to Engineer.

Other Provisions Concerning Payment Under this Paragraph C2.04:

Whenever Engineer is entitled to compensation for the charges of Engineer's Consultants, those charges shall be the amounts billed by Engineer's Consultants to Engineer times a factor of _____.

Factors: The external Reimbursable Expenses and Engineer's Consultant's factors include Engineer's overhead and profit associated with Engineer's responsibility for the administration of such services and costs.

Estimated Compensation Amounts:

Engineer's estimate of the amounts that will become payable for specified services are only estimates for planning purposes, are not binding on the parties, and are not the minimum or maximum amounts payable to Engineer under the Agreement.

When estimated compensation amounts have been stated herein and it subsequently becomes apparent to Engineer that the total compensation amount thus estimated will be exceeded, Engineer shall give Owner written notice thereof, allowing Owner to consider its options, including suspension or termination of Engineer's services for Owner's convenience. Upon notice, Owner and Engineer promptly shall review the matter of services remaining to be performed and compensation for such services. Owner shall either exercise its right to suspend or terminate Engineer's services for Owner's convenience, agree to such compensation exceeding said estimated amount, or agree to a reduction in the remaining services to be rendered by Engineer, so that total compensation for such services will not exceed said estimated amount when such services are completed. If Owner decides not to suspend Engineer's services during negotiations and Engineer exceeds the estimated amount before Owner and Engineer have agreed to an increase in the compensation due Engineer or a reduction in the remaining services, then Engineer shall be paid for all services rendered hereunder.

To the extent necessary to verify Engineer's charges and upon Owner's timely request, Engineer shall make copies of such records available to Owner at cost.

**COMPENSATION PACKET RPR-5:
Resident Project Representative – Salary Costs Times a Factor**

Article 2 of the Agreement is supplemented to include the following agreement of the parties:

C2.04 Compensation for Resident Project Representative Basic Services – Salary Costs Times a Factor Method of Payment

A. Owner shall pay Engineer for:

Resident Project Representative Services: For services of Engineer's Resident Project Representative, if any, under Paragraph A1.05.A.2 of Exhibit A, an amount equal to the Engineer's Salary Costs times a factor of _____ for services of Engineer's personnel engaged directly in resident Project representation, plus related Reimbursable Expenses and Engineer's Consultant's charges, if any. The total compensation under this paragraph is estimated to be \$_____, based upon RPR services on an eight-hour workday, Monday through Friday, over a ____ day construction schedule.

Compensation for Reimbursable Expenses:

For those Reimbursable Expenses that are not accounted for in the compensation for Basic Services under Paragraph C2.01 and are directly related to the provision of Resident Project Representative or Post-Construction Basic Services, Owner shall pay Engineer at the rates set forth in Appendix 1 to this Exhibit C.

Reimbursable Expenses include the following categories: transportation and subsistence incidental thereto; ; providing and maintaining field office facilities including furnishings and utilities; subsistence and transportation of Resident Project Representative and assistants; toll telephone calls and mobile phone charges; reproduction of reports, Drawings, Specifications, Bidding Documents, and similar Project-related items in addition to those required under Exhibit A. In addition, if authorized in advance by Owner, Reimbursable Expenses will also include expenses incurred for the use of highly specialized equipment.

The amounts payable to Engineer for Reimbursable Expenses, if any, will be those internal expenses related to the Resident Project Representative or Basic Services that are actually incurred or allocated by Engineer, plus all invoiced external Reimbursable Expenses allocable to such services, the latter multiplied by a factor of _____.

The Reimbursable Expenses Schedule will be adjusted annually (as of _____) to reflect equitable changes in the compensation payable to Engineer.

C. Other Provisions Concerning Payment Under this Paragraph C2.04:

Whenever Engineer is entitled to compensation for the charges of Engineer's Consultants, those charges shall be the amounts billed by Engineer's Consultants to Engineer times a factor of _____.

Factors: The external Reimbursable Expenses and Engineer's Consultant's factors include Engineer's overhead and profit associated with Engineer's responsibility for the administration of such services and costs.

Estimated Compensation Amounts:

Engineer's estimate of the amounts that will become payable for specified services are only estimates for planning purposes, are not binding on the parties, and are not the minimum or maximum amounts payable to Engineer under the Agreement.

When estimated compensation amounts have been stated herein and it subsequently becomes apparent to Engineer that the total compensation amount thus estimated will be exceeded, Engineer shall give Owner written notice thereof, allowing Owner to consider its options, including suspension or termination of Engineer's services for Owner's convenience. Upon notice, Owner and Engineer promptly shall review the matter of services remaining to be performed and compensation for such services. Owner shall either exercise its right to suspend or terminate Engineer's services for Owner's convenience, agree to such compensation exceeding said estimated amount, or agree to a reduction in the remaining services to be rendered by Engineer, so that total compensation for such services will not exceed said estimated amount when such services are completed. If Owner decides not to suspend Engineer's services during the negotiations and Engineer exceeds the estimated amount before Owner and Engineer have agreed to an increase in the compensation due Engineer or a reduction in the remaining services, then Engineer shall be paid for all services rendered hereunder.

To the extent necessary to verify Engineer's charges and upon Owner's timely request, Engineer shall make copies of such records available to Owner at cost.

**COMPENSATION PACKET AS-1:
Additional Services – Standard Hourly Rates**

Article 2 of the Agreement is supplemented to include the following agreement of the parties:

C2.05 Compensation for Additional Services – Standard Hourly Rates Method of Payment

A. Owner shall pay Engineer for Additional Services, if any, as follows:

General: For services of Engineer's personnel engaged directly on the Project pursuant to Paragraph A2.01 or A2.02 of Exhibit A, except for services as a consultant or witness under Paragraph A2.01.A.20, (which if needed shall be separately negotiated based on the nature of the required consultation or testimony) an amount equal to the cumulative hours charged to the Project by each class of Engineer's personnel times Standard Hourly Rates for each applicable billing class for all Additional Services performed on the Project, plus related Reimbursable Expenses and Engineer's Consultant's charges, if any.

Compensation For Reimbursable Expenses:

For those Reimbursable Expenses that are not accounted for in the compensation for Basic Services under Paragraph C2.01 and are directly related to the provision of Additional Services, Owner shall pay Engineer at the rates set forth in Appendix 1 to this Exhibit C.

Reimbursable Expenses include the following categories: transportation and subsistence incidental thereto; providing and maintaining field office facilities including furnishings and utilities; toll telephone calls and mobile phone charges; reproduction of reports, Drawings, Specifications, Bidding Documents, and similar Project-related items in addition to those required under Exhibit A. In addition, if authorized in advance by Owner, Reimbursable Expenses will also include expenses incurred for the use of highly specialized equipment.

The amounts payable to Engineer for Reimbursable Expenses, if any, will be the Additional Services-related internal expenses actually incurred or allocated by Engineer, plus all invoiced external Reimbursable Expenses allocable to such Additional Services, the latter multiplied by a factor of _____.

The Reimbursable Expenses Schedule will be adjusted annually (as of ___) to reflect equitable changes in the compensation payable to Engineer.

Other Provisions Concerning Payment For Additional Services:

Whenever Engineer is entitled to compensation for the charges of Engineer's Consultants, those charges shall be the amounts billed by Engineer's Consultants to Engineer times a factor of _____.

Factors: The external Reimbursable Expenses and Engineer's Consultant's Factors include Engineer's overhead and profit associated with Engineer's responsibility for the administration of such services and costs.

To the extent necessary to verify Engineer's charges and upon Owner's timely request, Engineer shall make copies of such records available to Owner at cost.

**COMPENSATION PACKET AS-2:
Additional Services – Direct Labor Costs Times a Factor**

Article 2 of the Agreement is supplemented to include the following agreement of the parties:

C2.05 Compensation for Additional Services – Direct Labor Costs Times a Factor Method of Payment

A. Owner shall pay Engineer for Additional Services as follows:

General: For services of Engineer's personnel engaged directly on the Project pursuant to Paragraph A2.01 or A2.02 of Exhibit A of the Agreement, except for services as a consultant or witness under Paragraph A2.01.A.20, (which if needed shall be separately negotiated based on the nature of the required consultation or testimony) an amount equal to Engineer's Direct Labor Costs times a factor of _____, plus related Reimbursable Expenses and Engineer's Consultant's charges, if any.

Compensation for Reimbursable Expenses:

For those Reimbursable Expenses that are not accounted for in the compensation for Basic Services under Paragraph C2.01 and are directly related to the provision of Additional Services, Owner shall pay Engineer at the rates set forth in Appendix 1 to this Exhibit C.

Reimbursable Expenses include the following categories: transportation and subsistence incidental thereto; providing and maintaining field office facilities including furnishings and utilities; toll telephone calls and mobile phone charges; reproduction of reports, Drawings, Specifications, Bidding Documents, and similar Project-related items in addition to those required under Exhibit A. In addition, if authorized in advance by Owner, Reimbursable Expenses will also include expenses incurred for and the use of highly specialized equipment.

The amounts payable to Engineer for Reimbursable Expenses, if any, will be the Additional Services-related internal expenses actually incurred or allocated by Engineer, plus all invoiced external Reimbursable Expenses allocable to such Additional Services, the latter multiplied by a factor of _____.

The Reimbursable Expenses Schedule will be adjusted annually (as of ___) to reflect equitable changes in the compensation payable to Engineer.

Other Provisions Concerning Payment for Additional Services:

Whenever Engineer is entitled to compensation for the charges of Engineer's Consultants, those charges shall be the amounts billed by Engineer's Consultants to Engineer times a factor of _____.

Factors: The external Reimbursable Expenses and Engineer's Consultant's factors include Engineer's overhead and profit associated with Engineer's responsibility for the administration of such services and costs.

To the extent necessary to verify Engineer's charges and upon Owner's timely request, Engineer shall make copies of such records available to Owner at cost.

**COMPENSATION PACKET AS-3:
Additional Services – Salary Costs Times a Factor**

Article 2 of the Agreement is supplemented to include the following agreement of the parties:

C2.05 Compensation for Additional Services – Salary Costs Times a Factor Method of Payment

A. Owner shall pay Engineer for Additional Services as follows:

General: For services of Engineer's personnel engaged directly on the Project pursuant to Paragraph A2.01 or A2.02 of Exhibit A, except for services as a consultant or witness under Paragraph A2.01.A.20, (which if needed shall be separately negotiated based on the nature of the required consultation or testimony) an amount equal to the cumulative hours charged to the Project by each Engineer's personnel times the Engineer's applicable Salary Costs times a factor of _____, plus related Reimbursable Expenses and Engineer's Consultant's charges, if any.

Compensation for Reimbursable Expenses:

For those Reimbursable Expenses that are not accounted for in the compensation for Basic Services under Paragraph C2.01 and are directly related to the provision of Additional Services, Owner shall pay Engineer at the rates set forth in Appendix 1 to this Exhibit C.

Reimbursable Expenses include the following categories: transportation and subsistence incidental thereto; providing and maintaining field office facilities including furnishings and utilities; toll telephone calls and mobile phone charges; reproduction of reports, Drawings, Specifications, Bidding Documents, and similar Project-related items in addition to those required under Exhibit A. In addition, if authorized in advance by Owner, Reimbursable Expenses will also include expenses incurred for and the use of highly specialized equipment.

The amounts payable to Engineer for Reimbursable Expenses, if any, will be the Additional Services-related internal expenses actually incurred or allocated by Engineer, plus all invoiced external Reimbursable Expenses allocable to Additional Services, the latter multiplied by a factor of _____.

The Reimbursable Expenses Schedule will be adjusted annually (as of _____) to reflect equitable changes in the compensation payable to Engineer.

Other Provisions Concerning Payment for Additional Services:

Whenever Engineer is entitled to compensation for the charges of Engineer's Consultants, those charges shall be the amounts billed by Engineer's Consultants to Engineer times a factor of _____.

Factors: The external Reimbursable Expenses and Engineer's Consultant's factors include Engineer's overhead and profit associated with Engineer's responsibility for the administration of such services and costs.

To the extent necessary to verify Engineer's charges and upon Owner's timely request, Engineer shall make copies of such records available to Owner at cost.

This is **Appendix 1** to **EXHIBIT C**, consisting of _____ pages, referred to in and part of the **Agreement between Owner and Engineer for Professional Services** dated _____.

Reimbursable Expenses Schedule

Current agreements for engineering services stipulate that the Reimbursable Expenses are subject to review and adjustment per Exhibit C. Reimbursable expenses for services performed on the date of the Agreement are:

| | |
|---|---|
| Fax | \$_____/page |
| 8"x11" Copies/Impressions | _____/page |
| Blue Print Copies | _____/sq. ft. |
| Reproducible Copies (Mylar) | _____/sq. ft. |
| Reproducible Copies (Paper) | _____/sq. ft. |
| Mileage (auto) | _____/mile |
| Field Truck Daily Charge | _____/day |
| Mileage (Field Truck) | _____/mile |
| Field Survey Equipment | _____/day |
| Confined Space Equipment | _____/day plus expenses |
| Resident Project Representative Equipment | _____/month |
| Specialized Software | _____/hour |
| CAD Charge | _____/hour |
| CAE Terminal Charge | _____/hour |
| Video Equipment Charge | _____/day, \$_____/week, or \$_____/month |
| Electrical Meters Charge | _____/week, or \$_____/month |
| Flow Meter Charge | _____/week, or \$_____/month |
| Rain Gauge | _____/week, or \$_____/month |
| Sampler Charge | _____/week, or \$_____/month |
| Dissolved Oxygen Tester Charge | _____/week |
| Fluorometer | _____/week |
| Laboratory Pilot Testing Charge | _____/week, or \$_____/month |
| Soil Gas Kit | _____/day |
| Submersible Pump | _____/day |
| Water Level Meter | _____/day, or \$_____/month |
| Soil Sampling | _____/sample |
| Groundwater Sampling | _____/sample |
| Health and Safety Level D | _____/day |
| Health and Safety Level C | _____/day |
| Electronic Media Charge | _____/hour |
| Long Distance Phone Calls | at cost |
| Mobile Phone | _____/day |
| Meals and Lodging | at cost |

[Note to User: Customize this Schedule to reflect anticipated reimbursable expenses on this specific Project]

This is **Appendix 2** to **EXHIBIT C**, consisting of _____ pages, referred to in and part of the **Agreement between Owner and Engineer for Professional Services** dated _____, _____.

Standard Hourly Rates Schedule

A. Standard Hourly Rates:

Standard Hourly Rates are set forth in this Appendix 2 to this Exhibit C and include salaries and wages paid to personnel in each billing class plus the cost of customary and statutory benefits, general and administrative overhead, non-project operating costs, and operating margin or profit.

The Standard Hourly Rates apply only as specified in Article C2.

Schedule:

Hourly rates for services performed on or after the date of the Agreement are:

| | |
|--------------------|---------------|
| Billing Class VIII | \$ _____/hour |
| Billing Class VII | _____/hour |
| Billing Class VI | _____/hour |
| Billing Class V | _____/hour |
| Billing Class IV | _____/hour |
| Billing Class III | _____/hour |
| Billing Class II | _____/hour |
| Billing Class I | _____/hour |
| Support Staff | _____/hour |

This is **EXHIBIT D**, consisting of _____ pages, referred to in and part of the **Agreement between Owner and Engineer for Professional Services** dated _____, _____.

[Note to User: Delete this Exhibit D if Engineer will not be providing Resident Project Representative Services under Paragraph A1.05.A.2]

Duties, Responsibilities, and Limitations of Authority of Resident Project Representative

Article 1 of the Agreement is supplemented to include the following agreement of the parties:

D1.01 Resident Project Representative

- B. Engineer shall furnish a Resident Project Representative (“RPR”) to assist Engineer in observing progress and quality of the Work. The RPR may provide full time representation or may provide representation to a lesser degree.

Through RPR's observations of Contractor's work in progress and field checks of materials and equipment, Engineer shall endeavor to provide further protection for Owner against defects and deficiencies in the Work. However, Engineer shall not, during such RPR field checks or as a result of such RPR observations of Contractor's work in progress, supervise, direct, or have control over Contractor's Work, nor shall Engineer (including the RPR) have authority over or responsibility for the means, methods, techniques, sequences, or procedures of construction selected or used by any contractor, for security or safety at the Site, for safety precautions and programs incident to any contractor's work in progress, or for any failure of a contractor to comply with Laws and Regulations applicable to such contractor's performing and furnishing of its work. The Engineer (including RPR) neither guarantee the performances of any contractor nor assumes responsibility for Contractor's failure to furnish and perform the Work in accordance with the Contract Documents. In addition, the specific terms set forth in Paragraph A1.05 of Exhibit A of the Agreement are applicable.

The duties and responsibilities of the RPR are as follows:

General: RPR is Engineer's representative at the Site, will act as directed by and under the supervision of Engineer, and will confer with Engineer regarding RPR's actions. RPR's dealings in matters pertaining to the Contractor's work in progress shall in general be with Engineer and Contractor. RPR's dealings with Subcontractors shall only be through or with the full knowledge and approval of Contractor. RPR shall generally communicate with Owner only with the knowledge of and under the direction of Engineer.

Schedules: Review the progress schedule, schedule of Shop Drawing and Sample submittals, and schedule of values prepared by Contractor and consult with Engineer concerning acceptability.

Conferences and Meetings: Attend meetings with Contractor, such as preconstruction conferences, progress meetings, job conferences and other project-related meetings, and prepare and circulate copies of minutes thereof.

Liaison:

Serve as Engineer's liaison with Contractor. Working principally through Contractor's authorized representative or designee, assist in providing information regarding the intent of the Contract Documents.

Assist Engineer in serving as Owner's liaison with Contractor when Contractor's operations affect Owner's on-Site operations.

Assist in obtaining from Owner additional details or information, when required for proper execution of the Work.

Interpretation of Contract Documents: Report to Engineer when clarifications and interpretations of the Contract Documents are needed and transmit to Contractor clarifications and interpretations as issued by Engineer.

Shop Drawings and Samples:

Record date of receipt of Samples and approved Shop Drawings.

Receive Samples which are furnished at the Site by Contractor, and notify Engineer of availability of Samples for examination.

Advise Engineer and Contractor of the commencement of any portion of the Work requiring a Shop Drawing or Sample submittal for which RPR believes that the submittal has not been approved by Engineer.

Modifications: Consider and evaluate Contractor's suggestions for modifications in Drawings or Specifications and report such suggestions, together with RPR's recommendations, to Engineer. Transmit to Contractor in writing decisions as issued by Engineer.

Review of Work and Rejection of Defective Work:

Conduct on-Site observations of Contractor's work in progress to assist Engineer in determining if the Work is in general proceeding in accordance with the Contract Documents.

Report to Engineer whenever RPR believes that any part of Contractor's work in progress will not produce a completed Project that conforms generally to the Contract Documents or will imperil the integrity of the design concept of the completed Project as a functioning whole as indicated in the Contract Documents, or has been damaged, or does not meet the requirements of any inspection, test or approval required to be made; and advise Engineer of that part of work in progress that RPR believes should be corrected or rejected or should be uncovered for observation, or requires special testing, inspection, or approval.

Inspections, Tests, and System Start-ups:

Consult with Engineer in advance of scheduled inspections, tests, and systems start-ups.

Verify that tests, equipment, and systems start-ups and operating and maintenance training are conducted in the presence of appropriate Owner's personnel, and that Contractor maintains adequate records thereof.

Observe, record, and report to Engineer appropriate details relative to the test procedures and systems start-ups.

Accompany visiting inspectors representing public or other agencies having jurisdiction over the Project, record the results of these inspections, and report to Engineer.

Records:

Maintain at the Site orderly files for correspondence, reports of job conferences, reproductions of original Contract Documents including all change orders, field orders, work change directives, addenda, additional Drawings issued subsequent to the execution of the Construction Contract, Engineer's clarifications and interpretations of the Contract Documents, progress reports, Shop Drawing and Sample submittals received from and delivered to Contractor, and other Project-related documents.

Prepare a daily report or keep a diary or log book, recording Contractor's hours on the Site, weather conditions, data relative to questions of change orders, field orders, work change directives, or changed conditions, Site visitors, daily activities, decisions, observations in general, and specific observations in more detail as in the case of observing test procedures; and send copies to Engineer.

Record names, addresses, fax numbers, e-mail addresses, web site locations, and telephone numbers of all Contractors, Subcontractors, and major Suppliers of materials and equipment.

Maintain records for use in preparing Project documentation.

Upon completion of the Work, furnish original set of all RPR Project documentation to Engineer.

Reports:

Furnish to Engineer periodic reports as required of progress of the Work and of Contractor's compliance with the progress schedule and schedule of Shop Drawing and Sample submittals.

Draft and recommend to Engineer proposed change orders, work change directives, and field orders. Obtain backup material from Contractor.

Furnish to Engineer and Owner copies of all inspection, test, and system start-up reports.

Immediately notify Engineer of the occurrence of any Site accidents, emergencies, acts of God endangering the Work, damage to property by fire or other causes, or the discovery of any Constituent of Concern.

Payment Requests: Review applications for payment with Contractor for compliance with the established procedure for their submission and forward with recommendations to Engineer, noting particularly the relationship of the payment requested to the schedule of values, Work completed, and materials and equipment delivered at the Site but not incorporated in the Work.

Certificates, Operation and Maintenance Manuals: During the course of the Work, verify that materials and equipment certificates, operation and maintenance manuals and other data required by the Contract Documents to be assembled and furnished by Contractor are applicable to the items actually installed and in accordance with the Contract Documents, and have these documents delivered to Engineer for review and forwarding to Owner prior to payment for that part of the Work.

Completion:

Participate in visits to the Project to determine Substantial Completion, assist in the determination of Substantial Completion and the preparation of lists of items to be completed or corrected.

Participate in a final visit to the Project in the company of Engineer, Owner, and Contractor, and prepare a final list of items to be completed and deficiencies to be remedied.

Observe whether all items on the final list have been completed or corrected and make recommendations to Engineer concerning acceptance and issuance of the Notice of Acceptability of the Work (Exhibit E).

Resident Project Representative shall not:

Authorize any deviation from the Contract Documents or substitution of materials or equipment (including “or-equal” items).

Exceed limitations of Engineer’s authority as set forth in this Agreement.

Undertake any of the responsibilities of Contractor, Subcontractors or Suppliers.

Advise on, issue directions relative to, or assume control over any aspect of the means, methods, techniques, sequences or procedures of Contractor’s work.

Advise on, issue directions regarding, or assume control over security or safety practices, precautions, and programs in connection with the activities or operations of Owner or Contractor.

Participate in specialized field or laboratory tests or inspections conducted off-site by others except as specifically authorized by Engineer.

Accept shop drawing or sample submittals from anyone other than Contractor.

Authorize Owner to occupy the Project in whole or in part.

This is **EXHIBIT E**, consisting of _____ pages, referred to in and part of the **Agreement between Owner and Engineer for Professional Services** dated _____, _____.

NOTICE OF ACCEPTABILITY OF WORK

PROJECT:

OWNER:

CONTRACTOR:

OWNER'S CONSTRUCTION CONTRACT IDENTIFICATION:

EFFECTIVE DATE OF THE CONSTRUCTION CONTRACT:

ENGINEER:

NOTICE DATE:

To: _____
Owner

And To: _____
Contractor

From: _____
Engineer

The Engineer hereby gives notice to the above Owner and Contractor that the completed Work furnished and performed by Contractor under the above Contract is acceptable, expressly subject to the provisions of the related Contract Documents, the Agreement between Owner and Engineer for Professional Services dated _____, _____, and the terms and conditions set forth in this Notice.

By: _____

Title: _____

Dated: _____

CONDITIONS OF NOTICE OF ACCEPTABILITY OF WORK

The Notice of Acceptability of Work (“Notice”) is expressly made subject to the following terms and conditions to which all those who receive said Notice and rely thereon agree:

1. This Notice is given with the skill and care ordinarily used by members of the engineering profession practicing under similar conditions at the same time and in the same locality.

This Notice reflects and is an expression of the professional judgment of Engineer.

This Notice is given as to the best of Engineer’s knowledge, information, and belief as of the Notice Date.

This Notice is based entirely on and expressly limited by the scope of services Engineer has been employed by Owner to perform or furnish during construction of the Project (including observation of the Contractor’s work) under Engineer’s Agreement with Owner and under the Construction Contract referred to in this Notice, and applies only to facts that are within Engineer’s knowledge or could reasonably have been ascertained by Engineer as a result of carrying out the responsibilities specifically assigned to Engineer under such Agreement and Construction Contract.

This Notice is not a guarantee or warranty of Contractor’s performance under the Construction Contract referred to in this Notice, nor an assumption of responsibility for any failure of Contractor to furnish and perform the Work thereunder in accordance with the Contract Documents.

This is **EXHIBIT F**, consisting of _____ pages, referred to in and part of the **Agreement between Owner and Engineer for Professional Services** dated _____, _____.

Construction Cost Limit

Paragraph 5.02 of the Agreement is supplemented to include the following agreement of the parties:

F5.02 Designing to Construction Cost Limit

A. Owner and Engineer hereby agree to a Construction Cost limit in the amount of \$_____.

A bidding or negotiating contingency of _____ percent will be added to any Construction Cost limit established.

The acceptance by Owner at any time during Basic Services of a revised opinion of probable Construction Cost in excess of the then established Construction Cost limit will constitute a corresponding increase in the Construction Cost limit.

Engineer will be permitted to determine what types and quality of materials, equipment and component systems are to be included in the Drawings and Specifications. Engineer may make reasonable adjustments in the scope, extent, and character of the Project to the extent consistent with the Project requirements and sound engineering practices, to bring the Project within the Construction Cost limit.

If the Bidding or Negotiating Phase has not commenced within three months after completion of the Final Design Phase, or if industry-wide prices are changed because of unusual or unanticipated events affecting the general level of prices or times of delivery in the construction industry, the established Construction Cost limit will not be binding on Engineer. In such cases, Owner shall consent to an adjustment in the Construction Cost limit commensurate with any applicable change in the general level of prices in the construction industry between the date of completion of the Final Design Phase and the date on which proposals or Bids are sought.

If the lowest bona fide proposal or Bid exceeds the established Construction Cost limit, Owner shall (1) give written approval to increase such Construction Cost limit, or (2) authorize negotiating or rebidding the Project within a reasonable time, or (3) cooperate in revising the Project's scope, extent, or character to the extent consistent with the Project's requirements and with sound engineering practices. In the case of (3), Engineer shall modify the Contract Documents as necessary to bring the Construction Cost within the Construction Cost Limit. Owner shall pay Engineer's cost to provide such modification services, including the costs of the services of its Consultants, all overhead expenses reasonably related thereto, and Reimbursable Expenses, but without profit to Engineer on account of such services. The providing of such services will be the limit of Engineer's responsibility in this regard and, having done so, Engineer shall be entitled to payment for services and expenses in accordance with this Agreement and will not otherwise be liable for damages attributable to the lowest bona fide proposal or bid exceeding the established Construction Cost limit.

This is **EXHIBIT G**, consisting of _____ pages, referred to in and part of the **Agreement between Owner and Engineer for Professional Services** dated _____, _____.

Insurance

Paragraph 6.04 of the Agreement is supplemented to include the following agreement of the parties.

G6.04 *Insurance*

A. The limits of liability for the insurance required by Paragraph 6.04.A and 6.04.B of the Agreement are as follows:

By Engineer:

| | |
|---|-----------|
| Workers' Compensation: | Statutory |
| Employer's Liability -- | |
| Each Accident: | \$ _____ |
| Disease, Policy Limit: | \$ _____ |
| Disease, Each Employee: | \$ _____ |
| General Liability -- | |
| Each Occurrence (Bodily Injury and Property Damage): | \$ _____ |
| General Aggregate: | \$ _____ |
| Excess or Umbrella Liability -- | |
| Each Occurrence: | \$ _____ |
| General Aggregate: | \$ _____ |
| Automobile Liability --Combined Single Limit (Bodily Injury and Property Damage): | |
| Each Accident | \$ _____ |
| Professional Liability -- | |
| Each Claim Made | \$ _____ |
| Annual Aggregate | \$ _____ |
| Other (specify): | \$ _____ |

By Owner:

| | |
|---|-----------|
| Workers' Compensation: | Statutory |
| Employer's Liability -- | |
| Each Accident | \$ _____ |
| Disease, Policy Limit | \$ _____ |
| Disease, Each Employee | \$ _____ |
| General Liability -- | |
| General Aggregate: | \$ _____ |
| Each Occurrence (Bodily Injury and Property Damage): | \$ _____ |
| Excess Umbrella Liability -- | |
| Each Occurrence: | \$ _____ |
| General Aggregate: | \$ _____ |
| Automobile Liability --Combined Single Limit (Bodily Injury and Property Damage): | |
| Each Accident: | \$ _____ |
| Other (specify): | \$ _____ |

Additional Insureds:

The following persons or entities are to be listed on Owner's general liability policies of insurance as additional insureds, and on any applicable property insurance policy as loss payees, as provided in Paragraph 6.04.B:

- a. _____
Engineer
- b. _____
Engineer's Consultant
- c. _____
Engineer's Consultant

During the term of this Agreement the Engineer shall notify Owner of any other Consultant to be listed as an additional insured on Owner's general liability and property policies of insurance.

The Owner shall be listed on Engineer's general liability policy as provided in Paragraph 6.04.A.

This is **EXHIBIT H**, consisting of _____ pages, referred to in and part of the **Agreement between Owner and Engineer for Professional Services** dated _____, _____.

Dispute Resolution

Paragraph 6.08 of the Agreement is amended and supplemented to include the following agreement of the parties:

[NOTE TO USER: Select one of the two alternatives provided]

~~H6.08 Dispute Resolution~~

~~A. *Mediation:* Owner and Engineer agree that they shall first submit any and all unsettled claims, counterclaims, disputes, and other matters in question between them arising out of or relating to this Agreement or the breach thereof ("Disputes") to mediation by insert name of mediator, or mediation service. Owner and Engineer agree to participate in the mediation process in good faith. The process shall be conducted on a confidential basis, and shall be completed within 120 days. If such mediation is unsuccessful in resolving a Dispute, then (1) the parties may mutually agree to a dispute resolution of their choice, or (2) either party may seek to have the Dispute resolved by a court of competent jurisdiction.~~

~~[or]~~

~~A. Arbitration: All Disputes between Owner and Engineer shall be settled by arbitration in accordance with the [here insert the name of a specified arbitration service or organization] rules effective at the Effective Date, subject to the conditions stated below. This agreement to arbitrate and any other agreement or consent to arbitrate entered into in accordance with this Paragraph H6.08.A will be specifically enforceable under prevailing law of any court having jurisdiction.~~

~~1. Notice of the demand for arbitration must be filed in writing with the other party to the Agreement and with the [specified arbitration service or organization]. The demand must be made within a reasonable time after the Dispute has arisen. In no event may the demand for arbitration be made after the date when institution of legal or equitable proceedings based on such Dispute would be barred by the applicable statute of limitations.~~

~~All demands for arbitration and all answering statements thereto which include any monetary claims must contain a statement that the total sum or value in controversy as alleged by the party making such demand or answering statement is not more than \$ _____ (exclusive of interest and costs). The arbitrators will not have jurisdiction, power, or authority to consider, or make findings (except in denial of their own jurisdiction) concerning any Dispute if the amount in controversy in such Dispute is more than \$ _____ (exclusive of interest and costs), or to render a monetary award in response thereto against any party which totals more than \$ _____ (exclusive of interest and costs). Disputes that are not subject to arbitration under this paragraph may be resolved in any court of competent jurisdiction.~~

~~The award rendered by the arbitrators shall be in writing, and shall include: (i) a precise breakdown of the award; and (ii) a written explanation of the award specifically citing the Agreement provisions deemed applicable and relied on in making the award.~~

~~The award rendered by the arbitrators will be consistent with the Agreement of the parties and final, and judgment may be entered upon it in any court having jurisdiction thereof, and will not be subject to appeal or modification.~~

~~If a Dispute in question between Owner and Engineer involves the work of a Contractor, Subcontractor, or consultants to the Owner or Engineer (each a "Joinable Party"), and such Joinable Party has agreed contractually or otherwise to participate in a consolidated arbitration concerning this Project, then either Owner or Engineer may join such Joinable Party as a party to the arbitration between Owner and Engineer hereunder. Nothing in this Paragraph H6.08.A.5 nor in the provision of such contract consenting to joinder shall create any claim, right, or cause of action in favor of the Joinable Party and against Owner or Engineer that does not otherwise exist.~~

This is **EXHIBIT I**, consisting of _____ pages, referred to in and part of the **Agreement between Owner and Engineer for Professional Services** dated _____, _____.

Limitations of Liability

Paragraph 6.10 of the Agreement is supplemented to include the following agreement of the parties:

A. Limitation of Engineer's Liability

[NOTE TO USER: Select one of the three alternatives listed below for 16.10 A.1]

~~1. *Engineer's Liability Limited to Amount of Engineer's Compensation:* To the fullest extent permitted by law, and notwithstanding any other provision of this Agreement, the total liability, in the aggregate, of Engineer and Engineer's officers, directors, members, partners, agents, employees, and Consultants, to Owner and anyone claiming by, through, or under Owner for any and all claims, losses, costs, or damages whatsoever arising out of, resulting from, or in any way related to the Project or the Agreement from any cause or causes, including but not limited to the negligence, professional errors or omissions, strict liability, breach of contract, indemnity obligations, or warranty express or implied of Engineer or Engineer's officers, directors, members, partners, agents, employees, or Consultants shall not exceed the total compensation received by Engineer under this Agreement.~~

~~[or]~~

~~1. *Engineer's Liability Limited to Amount of Insurance Proceeds:* Engineer shall procure and maintain insurance as required by and set forth in Exhibit G to this Agreement. Notwithstanding any other provision of this Agreement, and to the fullest extent permitted by law, the total liability, in the aggregate, of Engineer and Engineer's officers, directors, members, partners, agents, employees, and Consultants to Owner and anyone claiming by, through, or under Owner for any and all claims, losses, costs, or damages whatsoever arising out of, resulting from, or in any way related to the Project or the Agreement from any cause or causes, including but not limited to the negligence, professional errors or omissions, strict liability, breach of contract, indemnity obligations, or warranty express or implied, of Engineer or Engineer's officers, directors, members, partners, agents, employees, or Consultants (hereafter "Owner's Claims"), shall not exceed the total insurance proceeds paid on behalf of or to Engineer by Engineer's insurers in settlement or satisfaction of Owner's Claims under the terms and conditions of Engineer's insurance policies applicable thereto (excluding fees, costs and expenses of investigation, claims adjustment, defense, and appeal). If no such insurance coverage is provided with respect to Owner's Claims, then the total liability, in the aggregate, of Engineer and Engineer's officers, directors, members, partners, agents, employees, and Consultants to Owner and anyone claiming by, through, or under Owner for any and all such uninsured Owner's Claims shall not exceed \$ _____ [or]~~

~~1. *Engineer's Liability Limited to the Amount of \$ _____:* Notwithstanding any other provision of this Agreement, and to the fullest extent permitted by law, the total liability, in the aggregate, of Engineer and Engineer's officers, directors, members, partners, agents, employees, and Consultants, to Owner and anyone claiming by, through, or under Owner for any and all claims, losses, costs, or damages whatsoever arising out of, resulting from, or in any way related~~

to the Project or the Agreement from any cause or causes, including but not limited to the negligence, professional errors or omissions, strict liability, breach of contract, indemnity obligations, or warranty express or implied of Engineer or Engineer's officers, directors, members, partners, agents, employees, or Consultants shall not exceed the total amount of \$_____.

~~***[NOTE TO USER: If appropriate and desired, include I6.10.A.2 below as a supplement to Paragraph 6.10, which contains a mutual waiver of damages applicable to the benefit of both Owner and Engineer]***~~

~~*Exclusion of Special, Incidental, Indirect, and Consequential Damages:* To the fullest extent permitted by law, and notwithstanding any other provision in the Agreement, consistent with the terms of Paragraph 6.10, the Engineer and Engineer's officers, directors, members, partners, agents, Consultants, and employees shall not be liable to Owner or anyone claiming by, through, or under Owner for any special, incidental, indirect, or consequential damages whatsoever arising out of, resulting from, or in any way related to the Project or the Agreement from any cause or causes, including but not limited to any such damages caused by the negligence, professional errors or omissions, strict liability, breach of contract, indemnity obligations, or warranty express or implied of Engineer or Engineer's officers, directors, members, partners, agents, employees, or Consultants, and including but not limited to:~~

~~***[NOTE TO USER: list here particular types of damages that may be of special concern because of the nature of the project or specific circumstances, e.g., cost of replacement power, loss of use of equipment or of the facility, loss of profits or revenue, loss of financing, regulatory fines, etc. If the parties prefer to leave the language general, then end the sentence after the word "employees"]***~~

~~***[NOTE TO USER: the above exclusion of consequential and other damages can be converted to a limitation on the amount of such damages, following the format of Paragraph I6.10.A.1 above, by providing that "Engineer's total liability for such damages shall not exceed \$_____."]***~~

~~***[NOTE TO USER: If appropriate and desired, include I6.10.A.3 below]***~~

~~*Agreement Not to Claim for Cost of Certain Change Orders:* Owner recognizes and expects that certain Change Orders may be required to be issued as the result in whole or part of imprecision, incompleteness, errors, omissions, ambiguities, or inconsistencies in the Drawings, Specifications, and other design documentation furnished by Engineer or in the other professional services performed or furnished by Engineer under this Agreement ("Covered Change Orders"). Accordingly, Owner agrees not to sue or to make any claim directly or indirectly against Engineer on the basis of professional negligence, breach of contract, or otherwise with respect to the costs of approved Covered Change Orders unless the costs of such approved Covered Change Orders exceed _____% of Construction Cost,~~

~~and then only for an amount in excess of such percentage. Any responsibility of Engineer for the costs of Covered Change Orders in excess of such percentage will be determined on the basis of applicable contractual obligations and professional liability standards. For purposes of this paragraph, the cost of Covered Change Orders will not include any costs that Owner would have incurred if the Covered Change Order work had been included originally without any imprecision, incompleteness, error, omission, ambiguity, or inconsistency in the Contract Documents and without any other error or omission of Engineer related thereto. Nothing in this provision creates a presumption that, or changes the professional liability standard for determining if, Engineer is liable for the cost of Covered Change Orders in excess of the percentage of Construction Cost stated above or for any other Change Order. Wherever used in this paragraph, the term Engineer includes Engineer's officers, directors, members, partners, agents, employees, and Consultants.~~

~~***[NOTE TO USER: The parties may wish to consider the additional limitation contained in the following sentence.]***~~

~~Owner further agrees not to sue or to make any claim directly or indirectly against Engineer with respect to any Covered Change Order not in excess of such percentage stated above, and Owner agrees to hold Engineer harmless from and against any suit or claim made by the Contractor relating to any such Covered Change Order.]~~

~~***[NOTE TO USER: Many professional service agreements contain mutual indemnifications. If the parties elect to provide a mutual counterpart to the indemnification of Owner by Engineer in Paragraph 6.10.A, then supplement Paragraph 6.10.B by including the following indemnification of Engineer by Owner as Paragraph 16.10.B.]***~~

~~B. *Indemnification by Owner:* To the fullest extent permitted by law, Owner shall indemnify and hold harmless Engineer and its officers, directors, members, partners, agents, employees, and Consultants from and against any and all claims, costs, losses, and damages (including but not limited to all fees and charges of engineers, architects, attorneys, and other professionals, and all court, arbitration, or other dispute resolution costs) arising out of or relating to the Project, provided that any such claim, cost, loss, or damage is attributable to bodily injury, sickness, disease, or death or to injury to or destruction of tangible property (other than the Work itself), including the loss of use resulting therefrom, but only to the extent caused by any negligent act or omission of Owner or Owner's officers, directors, members, partners, agents, employees, consultants, or others retained by or under contract to the Owner with respect to this Agreement or to the Project.~~

This is **EXHIBIT J**, consisting of _____ pages, referred to in and part of the **Agreement between Owner and Engineer for Professional Services** dated _____, _____.

Special Provisions

Paragraph(s) ____ of the Agreement is/are amended to include the following agreement(s) of the parties:

This is **EXHIBIT K**, consisting of _____ pages, referred to in and part of the **Agreement between Owner and Engineer for Professional Services** dated _____, _____.

AMENDMENT TO OWNER-ENGINEER AGREEMENT

Amendment No. _____

1. *Background Data:*

- a. Effective Date of Owner-Engineer Agreement: _____
- b. Owner: _____
- c. Engineer: _____
- d. Project: _____

Description of Modifications:

[NOTE TO USER: Include the following paragraphs that are appropriate and delete those not applicable to this amendment. Refer to paragraph numbers used in the Agreement or a previous amendment for clarity with respect to the modifications to be made. Use paragraph numbers in this document for ease of reference herein and in future correspondence or amendments.]

- a. Engineer shall perform or furnish the following Additional Services:
 - b. The Scope of Services currently authorized to be performed by Engineer in accordance with the Agreement and previous amendments, if any, is modified as follows:
 - c. The responsibilities of Owner are modified as follows:
 - d. For the Additional Services or the modifications to services set forth above, Owner shall pay Engineer the following additional or modified compensation:
 - e. The schedule for rendering services is modified as follows:
-

- f. Other portions of the Agreement (including previous amendments, if any) are modified as follows:

[List other Attachments, if any]

5. Agreement Summary (Reference only)

- | | |
|-------------------------------------|----------|
| a. Original Agreement amount: | \$ _____ |
| b. Net change for prior amendments: | \$ _____ |
| c. This amendment amount: | \$ _____ |
| d. Adjusted Agreement amount: | \$ _____ |

The foregoing Agreement Summary is for reference only and does not alter the terms of the Agreement, including those set forth in Exhibit C.

Owner and Engineer hereby agree to modify the above-referenced Agreement as set forth in this Amendment. All provisions of the Agreement not modified by this or previous Amendments remain in effect. The Effective Date of this Amendment is _____.

OWNER:

ENGINEER:

By: _____

By: _____

Title: _____

Title: _____

Date
Signed: _____

Date Signed: _____

This is **EXHIBIT L**, consisting of _____ pages, referred to in and part of the **Agreement between Owner and Engineer for Professional Services** dated _____, _____.

CORONAVIRUS STATE AND LOCAL FISCAL RECOVERY FUNDS ADDENDUM

This **CORONAVIRUS STATE AND LOCAL FISCAL RECOVERY FUNDS ADDENDUM** (this “Addendum”) is entered into by and between [_____] , a [_____] (“Contractor”), and [_____] , a [_____] (“Unit”), and forms an integral part of the Contract (as defined in Section I hereof).

RECITALS

WHEREAS, Unit has received, either as a Recipient or Subrecipient (as each such term is defined in Section I hereof) a payment from the Coronavirus State Fiscal Recovery Fund (“State Fiscal Recovery Fund”) or Coronavirus Local Fiscal Recovery Fund (“Local Fiscal Recovery Fund” and, together with the State Fiscal Recovery Fund, the “Fiscal Recovery Funds”) established pursuant to Sections 602 and 603, respectively, of the Social Security Act, as added by Section 9901 of the American Rescue Plan Act of 2021, Pub. L. No. 117-2 (“ARPA”); and

WHEREAS, Unit intends to pay, in part or in whole, for the cost of the Contract (as defined in Section I hereof) using monies received from the Fiscal Recovery Funds; and

WHEREAS, in using such funds, Unit must comply with the terms of ARPA, regulations issued by the U.S. Department of the Treasury (“Treasury”) governing the expenditure of monies distributed from the Fiscal Recovery Funds (including, without limitation, the Interim Final Rule (86 Fed. Reg. 26,786 (May 17, 2021) and Final Rule (87 Fed. Reg. 4,338 (Jan. 27, 2022)), the Award Terms and Conditions applicable to the Fiscal Recovery Funds, and such other guidance as Treasury has issued or may issue governing the expenditure of monies distributed from the Fiscal Recovery Funds (collectively, the “Regulatory Requirements”); and

WHEREAS, pursuant to the Regulatory Requirements, Unit must comply with the Uniform Administrative Requirements, Cost Principles, and Audit Requirements for Federal Awards, 2 C.F.R. Part 200, other than such provisions as Treasury has determined or may determine are inapplicable to the Fiscal Recovery Funds; and

WHEREAS, pursuant to 2 C.F.R. § 200.327, Unit must include within the Contract applicable provisions described in Appendix II to 2 C.F.R. Part 200, each of which is contained in this Addendum; and

WHEREAS, Unit shall not enter into the Contract or make any distributions of funds to Contractor using monies from the Fiscal Recovery Funds absent Contractor’s agreement and adherence to each term and condition contained herein.

NOW THEREFORE, Contractor and Unit do mutually agree as follows:

AGREEMENTS

Definitions

- A. Unless otherwise defined in this Addendum, capitalized terms used in this Addendum shall have the meanings ascribed thereto in this Section I.
1. “ARPA” shall mean the American Rescue Plan Act of 2021, Pub. L. No. 117-2, as amended.
 2. “Administering Agency” shall have the meaning specified in 41 C.F.R. § 60-1.3.
-

3. "Applicant" shall have the meaning specified in 41 C.F.R. § 60-1.3, which is provided here for ease of reference: ("An applicant for Federal assistance involving a construction contract, or other participant in a program involving a construction contract as determined by regulation of an administering agency. The term also includes such persons after they become recipients of such Federal assistance.").
 4. "Construction Work" shall have the meaning specified in 41 C.F.R. § 60-1.3, which is provided here for ease of reference: ("[T]he construction, rehabilitation, alteration, conversion, extension, demolition or repair of buildings, highways, or other changes or improvements to real property, including facilities providing utility services. The term also includes the supervision, inspection, and other onsite functions incidental to the actual construction.").
 5. "Contract" shall mean the legal instrument by which Unit, as a Recipient or Subrecipient, shall purchase from Contractor property or services needed to carry out a project or program under a federal award, and of which this Addendum shall constitute an integral part.
 6. "Contractor" shall mean the entity named as "Contractor" in this Addendum that has received a Contract from Unit.
 7. "Federally Assisted Construction Contract" shall have the meaning specified in 41 C.F.R. § 60-1.3, which is provided here for ease of reference: ("[A]ny agreement or modification thereof between any applicant and a person for construction work which is paid for in whole or in part with funds obtained from the Government or borrowed on the credit of the Government pursuant to any federal program involving a grant, contract, loan, insurance, or guarantee, or undertaken pursuant to any federal program involving such grant, contract, loan, insurance, or guarantee, or any application or modification thereof approved by the government of the United States of America for a grant, contract, loan, insurance, or guarantee under which the applicant itself participates in the construction work.").
 8. "Government" shall have the meaning specified in 41 C.F.R. § 60-1.3, which is provided here for ease of reference: ("[T]he government of the United States of America.").
 9. "Laborer" or "Mechanic" shall have the meaning specified in 29 C.F.R. § 5.2(m), which is provided here for ease of reference: ("The term *laborer* or *mechanic* includes at least those workers whose duties are manual or physical in nature (including those workers who use tools or who are performing the work of a trade), as distinguished from mental or managerial. The term *laborer* or *mechanic* includes apprentices, trainees, helpers, and, in the case of contracts subject to the Contract Work Hours and Safety Standards Act, watchmen or guards. The term does not apply to workers whose duties are primarily administrative, executive, or clerical, rather than manual. Persons employed in a bona fide executive, administrative, or professional capacity as defined in part 541 of [Title 40 of the United States Code] are not deemed to be laborers or mechanics. Working foremen who devote more than 20 percent of their time during a workweek to mechanic or laborer duties, and who do not meet the criteria of [Title 40 of the United States Code], are laborers and mechanics for the time so spent.").
 10. "Recipient" shall mean an entity that receives a federal award directly from a federal awarding agency. The term does not include subrecipients or individuals that are beneficiaries of an award.
 11. "Subcontract" shall mean any agreement entered into by a Subcontractor to furnish supplies or services for the performance of this Contract or a Subcontract. It includes, but is not limited to, purchase orders and changes and modifications to purchase orders.
-

12. "Subcontractor" shall mean an entity that receives a Subcontract.
13. "Subrecipient" shall mean an entity that receives a subaward from a pass-through entity to carry out part of a federal award; but it does not include an individual that is a beneficiary of such award. A subrecipient may also be a recipient of other federal awards directly from a federal awarding agency.
14. "Tier" shall have the meaning indicated in 2 C.F.R. Part 180 and illustrated in 2 C.F.R. Part 180, Appendix II.
15. "Unit" shall have the meaning indicated in the preamble to this Addendum.

Equal Employment Opportunity

- A. If this contract is a Federally Assisted Construction Contract exceeding \$10,000, during the performance of this Contract, Contractor agrees as follows:
 1. Contractor will not discriminate against any employee or applicant for employment because of race, color, religion, sex, sexual orientation, gender identity, or national origin. Contractor will take affirmative action to ensure that applicants are employed and that employees are treated during employment without regard to their race, color, religion, sex, sexual orientation, gender identity, or national origin. Such action shall include, but not be limited to, the following: employment, upgrading, demotion, or transfer; recruitment or recruitment advertising; layoff or termination; rates of pay or other forms of compensation; and selection for training, including apprenticeship. Contractor agrees to post in conspicuous places, available to employees and applicants for employment, notices to be provided setting forth the provisions of this nondiscrimination clause.
 2. Contractor will, in all solicitations or advertisements for employees placed by or on behalf of Contractor, state that all qualified applicants will receive consideration for employment without regard to race, color, religion, sex, sexual orientation, gender identity, or national origin.
 3. Contractor will not discharge or in any other manner discriminate against any employee or applicant for employment because such employee or applicant has inquired about, discussed, or disclosed the compensation of the employee or applicant or another employee or applicant. This provision shall not apply to instances in which an employee who has access to the compensation information of other employees or applicants as a part of such employee's essential job functions discloses the compensation of such other employees or applicants to individuals who do not otherwise have access to such information, unless such disclosure is in response to a formal complaint or charge, in furtherance of an investigation, proceeding, hearing, or action, including an investigation conducted by the employer, or is consistent with Contractor's legal duty to furnish information.
 4. Contractor will send to each labor union or representative of workers with which it has a collective bargaining agreement or other contract or understanding, a notice to be provided advising the said labor union or workers' representatives of Contractor's commitments under this section, and shall post copies of the notice in conspicuous places available to employees and applicants for employment.
 5. Contractor will comply with all provisions of Executive Order 11246 of September 24, 1965, and of the rules, regulations, and relevant orders of the Secretary of Labor.
-

6. Contractor will furnish to the Administering Agency and the Secretary of Labor all information and reports required by Executive Order 11246 of September 24, 1965, and by rules, regulations, and orders of the Secretary of Labor, or pursuant thereto, and will permit access to its books, records, and accounts by the Administering Agency and the Secretary of Labor for purposes of investigation to ascertain compliance with such rules, regulations, and orders.
7. In the event of Contractor's noncompliance with the nondiscrimination clauses of this Contract or with any of the said rules, regulations, or orders, this Contract may be canceled, terminated, or suspended, in whole or in part, and Contractor may be declared ineligible for further Government contracts or Federally Assisted Construction Contracts in accordance with procedures authorized in Executive Order 11246 of September 24, 1965. Such other sanctions may be imposed and remedies invoked as provided in Executive Order 11246 of September 24, 1965, or by rule, regulation, or order of the Secretary of Labor, or as otherwise provided by law.
8. Contractor will include the portion of the sentence immediately preceding paragraph A.1. of this Section II and the provisions of paragraphs A.1. through A.7. in every Subcontract or purchase order unless exempted by rules, regulations, or orders of the Secretary of Labor issued pursuant to section 204 of Executive Order 11246 of September 24, 1965, so that such provisions will be binding upon each Subcontractor or vendor. Contractor will take such action with respect to any Subcontract or purchase order as the Administering Agency may direct as a means of enforcing such provisions, including sanctions for noncompliance.
Provided, however, that in the event Contractor becomes involved in, or is threatened with, litigation with a Subcontractor or vendor as a result of such direction by the Administering Agency, Contractor may request the United States to enter into such litigation to protect the interests of the United States.

Unit further agrees that it will be bound by the above equal opportunity clause with respect to its own employment practices when it participates in federally assisted construction work. Provided, that if Unit so participating is a State or local government, the above equal opportunity clause is not applicable to any agency, instrumentality, or subdivision of such government which does not participate in work on or under the Contract.

9. Unit agrees that it will assist and cooperate actively with the Administering Agency and the Secretary of Labor in obtaining the compliance of Contractor and any Subcontractors with the equal opportunity clause and the rules, regulations, and relevant orders of the Secretary of Labor; that it will furnish the Administering Agency and the Secretary of Labor such information as they may require for the supervision of such compliance; and that it will otherwise assist the Administering Agency in the discharge of the agency's primary responsibility for securing compliance.
 10. Unit further agrees that it will refrain from entering into any contract or contract modification subject to Executive Order 11246 of September 24, 1965, with a contractor debarred from, or who has not demonstrated eligibility for, Government contracts and Federally Assisted Construction Contracts pursuant to the Executive Order and that it will carry out such sanctions and penalties for violation of the equal opportunity clause as may be imposed upon Contractor and any Subcontractors by the Administering Agency or the Secretary of Labor pursuant to Part II, Subpart D of the Executive Order. In addition, Unit agrees that if it fails or refuses to comply with these undertakings, the Administering Agency may take any or all of the following actions: Cancel, terminate, or suspend, in whole or in part, this grant (contract, loan, insurance, guarantee); refrain from extending any further assistance to the applicant under the program with respect to which the failure or refund occurred until satisfactory assurance of future compliance has been received from such applicant; and refer the case to the Department of Justice for appropriate legal proceedings.
-

- B. If this Contract is not a Federally Assisted Construction Contract exceeding \$10,000, the provisions of Section I.A. of this Addendum shall not apply.

Copeland “Anti-Kickback” Act

- A. Contractor and any Subcontractors performing work under the Contract shall comply with 18 U.S.C. § 874. Unit shall report all suspected or reported violations to Treasury.

Contract Work Hours and Safety Standards Act

- A. *Overtime Requirements.* No Contractor or Subcontractor contracting for any part of the Contract work which may require or involve the employment of Laborers or Mechanics shall require or permit any such Laborer or Mechanic in any workweek in which he or she is employed on such work to work in excess of forty hours in such workweek unless such Laborer or Mechanic receives compensation at a rate not less than one and one-half times the basic rate of pay for all hours worked in excess of forty hours in such workweek.
- B. *Violation; Liability for Unpaid Wages; Liquidated Damages.* In the event of any violation of the clause set forth in Section IV.A. (*Overtime Requirements*), above, Contractor and any Subcontractor responsible therefor shall be liable for the unpaid wages. In addition, such Contractor and Subcontractor shall be liable to the United States (in the case of work done under contract for the District of Columbia or a territory, to such District or to such territory) for liquidated damages. Such liquidated damages shall be computed with respect to each individual Laborer or Mechanic, including watchmen and guards, employed in violation of the clause set forth in Section IV.A. (*Overtime Requirements*), above, in the sum of \$27 for each calendar day on which such individual was required or permitted to work in excess of the standard workweek of forty hours without payment of the overtime wages required by the clause set forth in Section IV.A. (*Overtime Requirements*), above.
- C. *Withholding for Unpaid Wages and Liquidated Damages.* Unit shall, upon its own action or upon written request of an authorized representative of the Department of Labor, withhold, or cause to be withheld, from any moneys payable on account of work performed by Contractor or Subcontractor under any such contract or any other federal contract with the same prime contractor, or any other federally assisted contract subject to the Contract Work Hours and Safety Standards Act, which is held by the same prime contractor, such sums as may be determined to be necessary to satisfy any liabilities of Contractor or Subcontractor for unpaid wages and liquidated damages as provided in Section IV.B. (*Violation; Liability for Unpaid Wages; Liquidated Damages*) of this section.
- D. *Subcontracts.* Contractor or Subcontractor shall insert in any Subcontract the clauses set forth in Sections IV.A. through IV.D. and also a clause requiring Subcontractors to include these clauses in any lower-Tier Subcontracts. Contractor shall be responsible for compliance by any first-Tier Subcontractor or lower-Tier Subcontractor with the clauses set forth in Sections IV.A. through IV.D.
- E. *Payroll and Records.* Contractor or Subcontractor shall maintain payrolls and basic payroll records during the course of the work and shall preserve them for a period of three years from the completion of the Contract for all Laborers and Mechanics, including guards and watchmen, working on the Contract. Such records shall contain the name and address of each such employee, Social Security number, correct classifications, hourly rates of wages paid, daily and weekly number of hours worked, deductions made, and actual wages paid. Records to be maintained under this provision shall be made available by Contractor or Subcontractor for inspection, copying, or transcription by authorized
-

representatives of the Department of the Treasury and the Department of Labor, and Contractor or Subcontractor will permit such representatives to interview employees during working hours on the job.

- F. *Exceptions.* None of the requirements of Section IV of this Addendum shall apply if this Contract is a Contract (1) for transportation by land, air, or water; (2) for the transmission of intelligence; (3) for the purchase of supplies, materials, or articles ordinarily available in the open market; or (4) in an amount that is equal to or less than \$100,000.

Rights to Inventions Made Under a Contract or Agreement

- A. The Government reserves a royalty-free, non-exclusive and irrevocable license to reproduce, publish, or otherwise use, and to authorize others to use for "Government purposes," any subject data or copyright described below.¹ "Government purposes" means use only for the direct purposes of the Government. Without the copyright owner's consent, the Government may not extend its federal license to any other party.
1. Any subject data developed under the Contract, whether or not a copyright has been obtained, and
 2. Any rights of copyright purchased by Contractor using federal assistance funded in whole or in part by the Department of the Treasury.
- B. Unless Treasury determines otherwise, a Contractor performing experimental, developmental, or research work required as part of this Contract agrees to permit Treasury to make available to the public either (1) Treasury's license in the copyright to any subject data developed in the course of the Contract or (2) a copy of the subject data first produced under the Contract for which a copyright has not been obtained. If the experimental, developmental, or research work which is the subject of this Contract is not completed for any reason whatsoever, all data developed under the Contract shall become subject data as defined herein and shall be delivered as the Government may direct.
- C. Unless prohibited by North Carolina law, upon request by the Government, Contractor agrees to indemnify, save, and hold harmless the Government, its officers, agents, and employees acting within the scope of their official duties against any liability, including costs and expenses, resulting from any willful or intentional violation by Contractor of proprietary rights, copyrights, or right of privacy arising out of the publication, translation, reproduction, delivery, use, or disposition of any data furnished under the Contract. Contractor shall be required to indemnify the Government for any such liability arising out of the wrongful act of any employee, official, or agent of the Contractor.

- D. Nothing contained in this clause shall imply a license to the Government under any patent or be construed as affecting the scope of any license or other right otherwise granted to the Government under any patent.
- E. Data developed by Contractor and financed entirely without using federal assistance provided by the Government that has been incorporated into work required by the underlying Contract is exempt from the requirements herein, provided that Contractor identifies those data in writing at the time of delivery of the Contract work. Contractor agrees to include these requirements in each Subcontract for experimental, developmental, or research work financed in whole or in part with federal assistance.
- F. For the purposes of this Section V, “subject data” means “recorded information, whether or not copyrighted, that is delivered or specified to be delivered as required by the Contract.” Examples of “subject data” include, but are not limited to, “computer software, standards, specifications, engineering drawings and associated lists, process sheets, manuals, technical reports, catalog item identifications, and related information, but do not include financial reports, cost analyses or other similar information used for performance or administration of the Contract.”

Clean Air Act and Federal Water Pollution Control Act

- A. *Clean Air Act*. Contractor agrees to comply with all applicable standards, orders, and regulations issued pursuant to the Clean Air Act, as amended, 42 U.S.C. §§ 7401 *et seq.* Contractor agrees to report each violation to Unit and understands and agrees that Unit will, in turn, report each violation as required to Treasury and the appropriate Environmental Protection Agency Regional Office. Contractor agrees to include these requirements in each Subcontract exceeding \$150,000 financed, in whole or in part, with federal assistance provided by Treasury.
- B. *Federal Water Pollution Control Act*. Contractor agrees to comply with all applicable standards, orders, and regulations issued pursuant to the Federal Water Pollution Control Act, as amended, 33 U.S.C. §§ 1251 *et seq.* Contractor agrees to report each violation to Unit and understands and agrees that Unit will, in turn, report each violation as required to assure notification to Treasury and the appropriate Environmental Protection Agency Regional Office. Contractor agrees to include these requirements in each Subcontract exceeding \$150,000 financed, in whole or in part, with federal assistance provided by Treasury.

Debarment and Suspension

- A. Due to its receipt of Fiscal Recovery Funds, Unit is a participant in a nonprocurement transaction (defined at 2 C.F.R. § 180.970) that is a covered transaction pursuant to 2 C.F.R. § 180.210 and 31 C.F.R. § 19.210. Therefore, this Contract is a lower-Tier covered transaction for purposes of 2 C.F.R. Part 180 and 31 C.F.R. Part 19 if (1) the amount of this Contract is greater than or equal to \$25,000 (2 C.F.R. § 180.220(b)(1); 31 C.F.R. § 19.220(b)(1)); (2) the Contract requires the consent of an official of the Department of the Treasury (2 C.F.R. § 180.220(b)(2); 31 C.F.R. § 19.220(b)(2)); or (3) this Contract is for federally required audit services (2 C.F.R. § 180.220(b)(3); 31 C.F.R. § 19.220(b)(3)).
 - B. If this Contract is a covered transaction as set forth in Section VII.A., above, Contractor hereby certifies as of the date hereof that Contractor, Contractor’s principals (defined at 2 C.F.R. § 180.995), and the affiliates (defined at 2 C.F.R. § 180.905) of both Contractor and Contractor’s principals are not excluded (defined at 2 C.F.R. § 180.935) and are not disqualified (defined at 2 C.F.R. § 180.935). If any of the foregoing persons are excluded or disqualified and the Secretary of the Treasury has not granted an exception pursuant to 31 C.F.R. § 19.120(a), (1) this Contract shall be void, (2) Unit shall not make
-

any payments of federal financial assistance to Contractor, and (3) Unit shall have no obligations to Contractor under this Contract.

- C. Contractor must comply with 2 C.F.R. Part 180, Subpart C and 31 C.F.R. Part 19 and must include a requirement to comply with these regulations in any lower-Tier covered transaction into which it enters.² This certification is a material representation of fact relied upon by Unit, and all liability arising from an erroneous representation shall be borne solely by Contractor.
- D. If it is later determined that Contractor did not comply with 2 C.F.R. Part 180, Subpart C and 31 C.F.R. Part 19, in addition to remedies available to Unit, the Government may pursue available remedies, including but not limited to suspension and/or debarment.

Byrd Anti-Lobbying Amendment

- A. Contractor certifies to Unit, and Contractor shall cause each Tier below it to certify to the Tier directly above such Tier, that it has not used and will not use federally appropriated funds to pay any person or organization for influencing or attempting to influence an officer or employee of any agency, a member of Congress, officer or employee of Congress, or an employee of a member of Congress in connection with obtaining any federal contract, grant, or any other award covered by 31 U.S.C. § 1352. Contractor shall, and shall cause each Tier below it, to disclose any lobbying with non-federally appropriated funds that takes place in connection with obtaining any federal award. Such disclosures (to be set forth on Standard Form-LLL, contained in 31 C.F.R. Part 21, Appendix B) shall be forwarded from Tier to Tier up to the Unit, which will, in turn, forward the certification(s) to Treasury. Contractor shall cause the language of this Section VIII.A. to be included in all Subcontracts. This certification is a material representation of fact upon which Unit has relied when entering into this Contract, and all liability arising from an erroneous representation shall be borne solely by Contractor.
- B. Contractors that bid or apply for a contract exceeding \$100,000 (including this Contract, if applicable) also must file with Unit the certification in Attachment 1 to this Addendum, which is attached hereto and incorporated herein.
- C. Contractor also shall cause any Subcontractor with a Subcontract (at any Tier) exceeding \$100,000 to file with the Tier above it the certification in Attachment 1 to this Addendum, which is attached hereto and incorporated herein.

Procurement of Recovered Materials

- A. Section IX.B. shall apply if (1) this Contract involves the purchase of an item designated by the Environmental Protection Agency (“EPA”) in 40 C.F.R. Part 247 that exceeds \$10,000 or (2) the total value of such designated items acquired during Unit’s preceding fiscal year exceeded \$10,000.
 - B. In the performance of the Contract, Contractor shall make maximum use of products containing recovered materials that are EPA-designated items, unless the product cannot (1) be acquired competitively within a timeframe providing for compliance with the Contract performance schedule, (2) meet Contract performance requirements, or (3) be acquired at a reasonable price. Information about this requirement, along with the list of EPA-designated items, is available on EPA’s website.³
-
-

Contractor also agrees to comply with all other applicable requirements of Section 6002 of the Solid Waste Disposal Act.

Prohibition on Contracting for Covered Telecommunications Equipment or Services

- A. *Definitions.* Unless otherwise defined in this Contract, capitalized terms used in this Section X shall have the meanings ascribed thereto in this Section X.A.
1. “Backhaul” means intermediate links between the core network, or backbone network, and the small subnetworks at the edge of the network (e.g., connecting cell phones/towers to the core telephone network). Backhaul can be wireless (e.g., microwave) or wired (e.g., fiber optic, coaxial cable, Ethernet).
 2. “Covered Foreign Country” means the People’s Republic of China.
 3. “Covered Telecommunications Equipment or Services” means (a) telecommunications equipment produced by Huawei Technologies Company or ZTE Corporation (or any subsidiary or affiliate of such entities); (b) for the purpose of public safety, security of Government facilities, physical security surveillance of critical infrastructure, and other national security purposes, video surveillance and telecommunications equipment produced by Hytera Communications Corporation, Hangzhou Hikvision Digital Technology Company, or Dahua Technology Company (or any subsidiary or affiliate of such entities); (c) telecommunications or video surveillance services provided by such entities or using such equipment; or (d) telecommunications or video surveillance equipment or services produced or provided by an entity that the Secretary of Defense, in consultation with the Director of National Intelligence or the Director of the Federal Bureau of Investigation, reasonably believes to be an entity owned or controlled by, or otherwise connected to, the government of a Covered Foreign Country.
 4. “Critical Technology”⁴ means (1) defense articles or defense services included on the United States Munitions List set forth in the International Traffic in Arms Regulations under subchapter M of chapter I of title 22, Code of Federal Regulations; (2) items included on the Commerce Control List set forth in Supplement No. 1 to part 774 of the Export Administration Regulations under subchapter C of chapter VII of title 15, Code of Federal Regulations and controlled (a) pursuant to multilateral regimes, including for reasons relating to national security, chemical and biological weapons proliferation, nuclear nonproliferation, or missile technology, or (b) for reasons relating to regional stability or surreptitious listening; (3) specially designed and prepared nuclear equipment, parts and components, materials, software, and technology covered by part 810 of title 10, Code of Federal Regulations (relating to assistance to foreign atomic energy activities); (4) nuclear facilities, equipment, and material covered by part 110 of title 10, Code of Federal Regulations (relating to export and import of nuclear equipment and material); (5) select agents and toxins covered by part 331 of title 7, Code of Federal Regulations; part 121 of title 9 of such Code; or part 73 of title 42 of such Code; or (6) emerging and foundational technologies controlled pursuant to section 1758 of the Export Control Reform Act of 2018 (50 U.S.C. § 4817).
 5. “Interconnection Arrangements” means arrangements governing the physical connection of two or more networks to allow the use of another’s network to hand off traffic where it is ultimately delivered (e.g., connection of a customer of telephone provider A to a customer of telephone company B) or sharing data and other information resources.
-
-

6. “Roaming” means cellular communications services (e.g., voice, video, data) received from a visited network when unable to connect to the facilities of the home network either because signal coverage is too weak or because traffic is too high.
7. “Substantial or Essential Component” means any component necessary for the proper function or performance of a piece of equipment, system, or service.
8. “Telecommunications Equipment or Services” means telecommunications or video surveillance equipment or services, such as, but not limited to, mobile phones, land lines, internet, video surveillance, and cloud services.

B. Prohibitions.

1. Section 889(b) of the John S. McCain National Defense Authorization Act for Fiscal Year 2019, Pub. L. No. 115-232, and 2 C.F.R. § 200.216 prohibit the head of an executive agency on or after August 13, 2020, from obtaining or expending grant, cooperative agreement, loan, or loan guarantee funds on certain telecommunications products or from certain entities for national security reasons.
2. Unless an exception in Section X.C. applies, Contractor and any Subcontractors may not use grant, cooperative agreement, loan, or loan guarantee funds (including, without limitation, Fiscal Recovery Funds) received from a federal government to:
 - a. Procure or obtain any equipment, system, or service that uses Covered Telecommunications Equipment or Services as a Substantial or Essential Component of any system or as Critical Technology of any system;
 - b. Enter into, extend, or renew a contract to procure or obtain any equipment, system, or service that uses Covered Telecommunications Equipment or Services as a Substantial or Essential Component of any system or as Critical Technology of any system;
 - c. Enter into, extend, or renew contracts with entities that use Covered Telecommunications Equipment or Services as a Substantial or Essential Component of any system or as Critical Technology as part of any system; or
 - d. Provide, as part of its performance of this Contract, any Subcontract; any other contractual instrument; or any equipment, system, or service that uses Covered Telecommunications Equipment or Services as a Substantial or Essential Component of any system or as Critical Technology as part of any system.

C. Exceptions.

1. This clause does not prohibit Contractor or Subcontractors from providing:
 - a. A service that connects to the facilities of a third party, such as Backhaul, Roaming, or Interconnection Agreements, or
 - b. Telecommunications equipment that cannot route or redirect user data traffic or permit visibility into any user data or packets that such equipment transmits or otherwise handles.
 2. By necessary implication and regulation, the prohibitions also do not apply to:
 - a. Covered telecommunications equipment that:
-

- i. Is not used as a Substantial or Essential Component of any system and
 - ii. Is not used as Critical Technology of any system.
- b. Other telecommunications equipment or services that are not considered Covered Telecommunications Equipment or Services.

D. Reporting Requirement

1. In the event Contractor identifies, during contract performance, covered Telecommunications Equipment or Services used as a Substantial or Essential Component of any system or as Critical Technology as part of any system, or if Contractor is notified of such by a Subcontractor at any Tier or by any other source, Contractor shall report the information in paragraph D.2 (d)(2) of this Section X to Unit, unless procedures for reporting the information are established elsewhere in this Contract.
2. Contractor shall report the following information to Unit pursuant to paragraph D.1 of this Section X:
 - a. Within one business day from the date of such identification or notification: contract number; order number(s), if applicable; supplier name; supplier unique entity identifier (if known); supplier Commercial and Government Entity (CAGE) code (if known); brand; model number (original equipment manufacturer number, manufacturer part number, or wholesaler number); item description; and any readily available information about mitigation actions undertaken or recommended.
 - b. Within ten business days of submitting the information in paragraph D.2.a. of this Section: any further available information about mitigation actions undertaken or recommended. In addition, Contractor shall describe (i) the efforts it undertook to prevent use or submission of Covered Telecommunications Equipment or Services and (ii) any additional efforts that will be incorporated to prevent future use or submission of Covered Telecommunications Equipment or Services.

- E. *Subcontractor*. Contractor shall cause to be inserted into all Subcontracts and other contractual instruments relating to the performance of this Contract the substance of this Section X, including this paragraph E.

Domestic Preferences for Procurements

- A. For purposes of this Section XI, the terms below are defined as follows:
1. “Produced in the United States” means, for iron and steel products, that all manufacturing processes, from the initial melting stage through the application of coating, occurred in the United States.
 2. “Manufactured Products” means items and construction materials composed, in whole or in part, of non-ferrous metals such as aluminum; plastics and polymer-based products such as polyvinyl chloride pipe; aggregates such as concrete; glass, including optical fiber; and lumber.
- B. As applicable, and to the extent consistent with law, Contractor should, to the greatest extent practicable, provide a preference for the purchase, acquisition, or use of goods, products or materials Produced in the United States. This includes, but is not limited to, iron, aluminum, steel, cement, and
-

other Manufactured Products. Contractor shall cause any Subcontractors to include the requirements of this Section XI in any Subcontracts.

Solicitation of Minority and Women-Owned Business Enterprises

- A. If Contractor intends to let any Subcontracts, Contractor shall (1) place qualified small and minority businesses and women's business enterprises on its solicitation lists; (2) assure that small and minority businesses and women's business enterprises are solicited whenever they are potential sources; (3) divide total requirements, when economically feasible, into smaller tasks or quantities to permit maximum participation by small and minority businesses and women's business enterprises; (4) establish delivery schedules, where the requirement permits, which encourage participation by small and minority businesses and women's business enterprises; (5) use the services and assistance, as appropriate, of the Small Business Administration, the Minority Business Development Agency of the Department of Commerce, and the North Carolina Office for Historically Underutilized Businesses.
- B. For the purposes of Section XII.A., an entity shall qualify (1) as a "minority business" or "women's business enterprise" if it is currently certified as a North Carolina "historically underutilized business" under Chapter 143, Section 128.4(a) of the N.C. General Statutes (hereinafter G.S.), and (2) as a "small business" if it is independently owned and operated and is qualified under the Small Business Administration criteria and size standards at 13 C.F.R. Part 21.

Access to Records

- A. Contractor agrees to provide Unit, the Department of the Treasury, the Treasury Office of Inspector General, the Government Accountability Office, and the Comptroller General of the United States, or any authorized representatives of these entities, access to any records (electronic and otherwise) of Contractor which are directly pertinent to this Contract to conduct audits or any other investigations. Contractor agrees to permit any of the foregoing parties to reproduce such records by any means whatsoever or to copy excerpts and transcriptions as reasonably needed.
- B. Contractor agrees to retain all records covered by this Section XIII through December 31, 2031, or such longer period as is necessary for the resolution of any litigation, claim, negotiation, audit, or other inquiry involving the Contract.

Conflicts of Interest; Gifts and Favors

- A. Contractor understands that (1) Unit will use Fiscal Recovery Funds to pay for the cost of this Contract and (2) the expenditure of Fiscal Recovery Funds is governed by the [*Conflict of Interest Policy*] of the Unit, the Regulatory Requirements (including, without limitation, 2 C.F.R. § 200.318(c) (1)), and North Carolina law (including, without limitation, G.S. 14-234(a)(1) and -234.3(a)).
 - B. Contractor certifies to Unit that as of the date hereof, to the best of its knowledge after reasonable inquiry, no employee, officer, or agent of Unit involved in the selection, award, or administration of this Contract (each a "Covered Individual"); no member of a Covered Individual's immediate family; no partner of a Covered Individual; and no organization (including Contractor) which employs or is about to employ a Covered Individual has a financial or other interest in, or has received a tangible personal benefit from, Contractor. Should Contractor obtain knowledge of any such interest or any tangible
-

personal benefit described in the preceding sentence after the date hereof, Contractor shall promptly disclose the same to Unit in writing.

- C. Contractor certifies to Unit that it has not provided, nor offered to provide, any gratuities, favors, or anything of value to an officer, employee, or agent of Unit. Should Contractor obtain knowledge of the provision, or offer of any provision, of any gratuity, favor, or anything of value to an officer, employee, or agent described in the preceding sentence after the date hereof, Contractor shall promptly disclose the same to Unit in writing.

Assurances of Compliance with Title VI of the Civil Rights Act of 1964

- A. Contractor and any Subcontractor, or the successor, transferee, or assignee of Contractor or any Subcontractor, shall comply with Title VI of the Civil Rights Act of 1964, which prohibits recipients of federal financial assistance from excluding from a program or activity, denying benefits of, or otherwise discriminating against a person on the basis of race, color, or national origin (42 U.S.C. §§ 2000d *et seq.*), as implemented by the Department of the Treasury's Title VI regulations, 31 C.F.R. Part 22, which are herein incorporated by reference and made a part of this Contract. Title VI also provides protection to persons with "Limited English Proficiency" in any program or activity receiving federal financial assistance, 42 U.S.C. §§ 2000d *et seq.*, as implemented by Treasury's Title VI regulations, 31 C.F.R. Part 22, and herein incorporated by reference and made a part of this Contract.⁵

Other Non-Discrimination Statutes

- A. Contractor acknowledges that Unit is bound by and agrees, to the extent applicable to Contractor, to abide by the provisions contained in the federal statutes enumerated below and any other federal statutes and regulations that may be applicable to the expenditure of Fiscal Recovery Funds:
 - 1. The Fair Housing Act, Title VIII of the Civil Rights Act of 1968 (42 U.S.C. §§ 3601 *et seq.*), which prohibits discrimination in housing on the basis of race, color, religion, national origin, sex, familial status, or disability;
 - 2. Section 504 of the Rehabilitation Act of 1973, as amended (29 U.S.C. § 794), which prohibits discrimination on the basis of disability under any program or activity receiving federal financial assistance;
 - 3. The Age Discrimination Act of 1975, as amended (42 U.S.C. §§ 6101 *et seq.*), and Treasury's implementing regulations at 31 C.F.R. Part 23, which prohibit discrimination on the basis of age in programs or activities receiving federal financial assistance; and
 - 4. Title II of the Americans with Disabilities Act of 1990, as amended (42 U.S.C. §§ 12101 *et seq.*), which prohibits discrimination on the basis of disability in programs, activities, and services provided or made available by state and local governments or instrumentalities or agencies thereto.

Miscellaneous

- A. *Increasing Seat Belt Use in the United States.* Pursuant to Executive Order 13043, 62 Fed. Reg. 19,216 (Apr. 18, 1997), Unit encourages Contractor to adopt and enforce on-the-job seat belt policies and programs for its employees when operating company-owned, rented, or personally owned vehicles.
- B. *Reducing Text Messaging While Driving.* Pursuant to Executive Order 13513, 74 Fed. Reg. 51,225 (Oct. 6, 2009), Unit encourages Contractor to adopt and enforce policies that ban text messaging while driving.

Conflicts and Interpretation

- A. To the extent that any portion of this Addendum conflicts with any term or condition of this Contract expressed outside of this Addendum, the terms of this Addendum shall govern.

CONTRACTOR:

By: _____

Name: _____

Title: _____

UNIT:

By: _____

Name: _____

Title: _____

[Signature Page to Coronavirus State and Local Fiscal Recovery Funds Addendum]

CORONAVIRUS STATE AND LOCAL FISCAL RECOVERY FUNDS ADDENDUM
APPENDIX A, 31 C.F.R. PART 21 – CERTIFICATION REGARDING LOBBYING

The undersigned certifies, to the best of the undersigned’s knowledge and belief, that:

- 1. No Federal appropriated funds have been paid or will be paid, by or on behalf of the undersigned, to any person for influencing or attempting to influence an officer or employee of an agency, a Member of Congress, an officer or employee of Congress, or an employee of a Member of Congress in connection with the awarding of any Federal contract, the making of any Federal grant, the making of any Federal loan, the entering into of any cooperative agreement, or the extension, continuation, renewal, amendment, or modification of any Federal contract, grant, loan, or cooperative agreement.



2. If any funds other than Federal appropriated funds have been paid or will be paid to any person for influencing or attempting to influence an officer or employee of any agency, a Member of Congress, an officer or employee of Congress, or an employee of a Member of Congress in connection with this Federal contract, grant, loan, or cooperative agreement, the undersigned shall complete and submit [Standard Form-LLL, "Disclosure Form to Report Lobbying,"](#) in accordance with its instructions.
3. The undersigned shall require that the language of this certification be included in the award documents for all subawards at all tiers (including subcontracts, subgrants, and contracts under grants, loans, and cooperative agreements) and that all subrecipients shall certify and disclose accordingly.
4. This certification is a material representation of fact upon which reliance was placed when this transaction was made or entered into. Submission of this certification is a prerequisite for making or entering into this transaction imposed by Section 1352, Title 31 of the U.S. Code. Any person who fails to file the required certification shall be subject to a civil penalty of not less than \$10,000 and not more than \$100,000 for each such failure.

The Contractor, _____, certifies and affirms the truthfulness and accuracy of each statement of its certification and disclosure, if any. In addition, the Contractor understands and agrees that the provisions of 31 U.S.C. Chapter 38, Administrative Remedies for False Claims and Statements, apply to this certification and disclosure, if any.

Signature of Contractor's Authorized Official

Name and Title of Contractor's Authorized Official

Date
