

# 10<sup>th</sup> Street Pedestrian Crossing Feasibility Study

between Dickinson Avenue and Evans Street

## Public Meeting

Thank you for joining us. This meeting will operate as an open house with no formal presentation. Please visit the stations to learn more about the project process, study area, and conceptual plans developed thus far.

Team members are available to talk with you and answer any questions.

Please feel free to leave us feedback in the form of a written comment. Thanks again for your interest in this study.

### Stations

- Project Process
- Purpose and Need
- Existing Conditions
- Concept Visuals
- Comments

# Project Process

- **Feasibility Study** is a study to evaluate constructable alternatives to address an issue and identify constraints to those alternatives.
- **Public Engagement** includes listening to stakeholders and the public to fully understand the issue and focus on a vision for the solution.
- **Conceptual Design** is a planning level design effort that confirms constructability and produces a planning level cost estimate.
- **Final Report** will be a documentation of the study process and findings that sets the stage for future project implementation.

# Project Schedule

Milestone	Date/ Year
Project Kick Off	August 2022
Stakeholder Engagement	September 2022
→ Public Meeting	October 11, 2022
Alternative Revision	October 2022
Final Feasibility Report	November 2022

# Project Contacts

Eliud De Jesus  
Transportation Planner, City of Greenville  
[EDeJesus@greenvillenc.gov](mailto:EDeJesus@greenvillenc.gov)  
252-329-4476

Lauren Triebert, PE  
Consultant Project Manager, VHB  
[ltrieberr@vhb.com](mailto:ltrieberr@vhb.com)  
919-741-5524

# Purpose and Need

- The purpose of this study is to evaluate options for a safe and effective pedestrian crossing of 10<sup>th</sup> Street between Dickinson Avenue and Evans Street.
- This connection is needed to connect planned economic development sites on either side of 10<sup>th</sup> Street.
- This connection is included in and supported by local transportation plans.



Local Plans



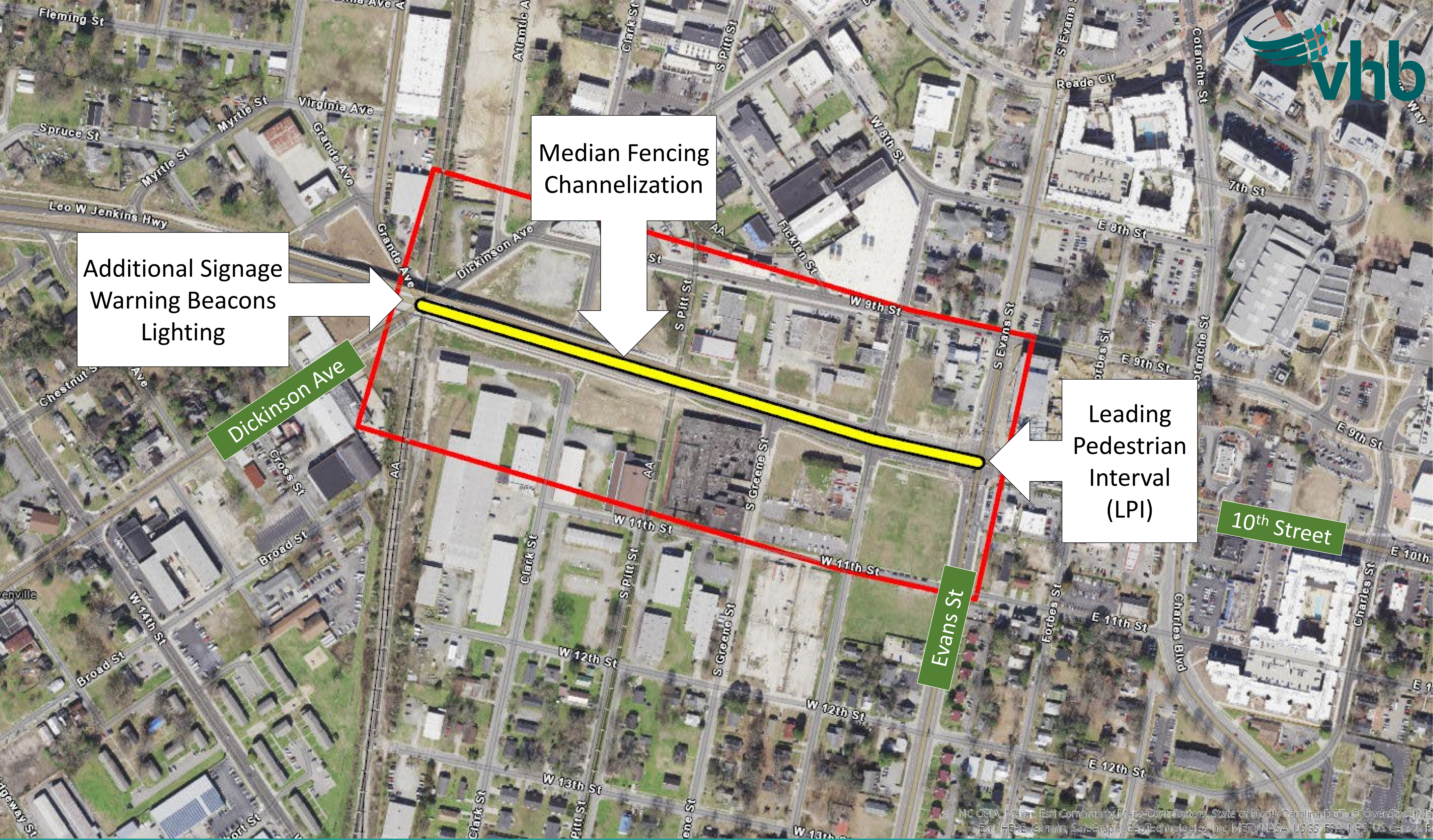
Surrounding Developments



Future Increase in  
Pedestrian Traffic







Additional Signage  
Warning Beacons  
Lighting

Median Fencing  
Channelization

Leading  
Pedestrian  
Interval  
(LPI)

Dickinson Ave

Evans St

10th Street

# Corridor Improvements