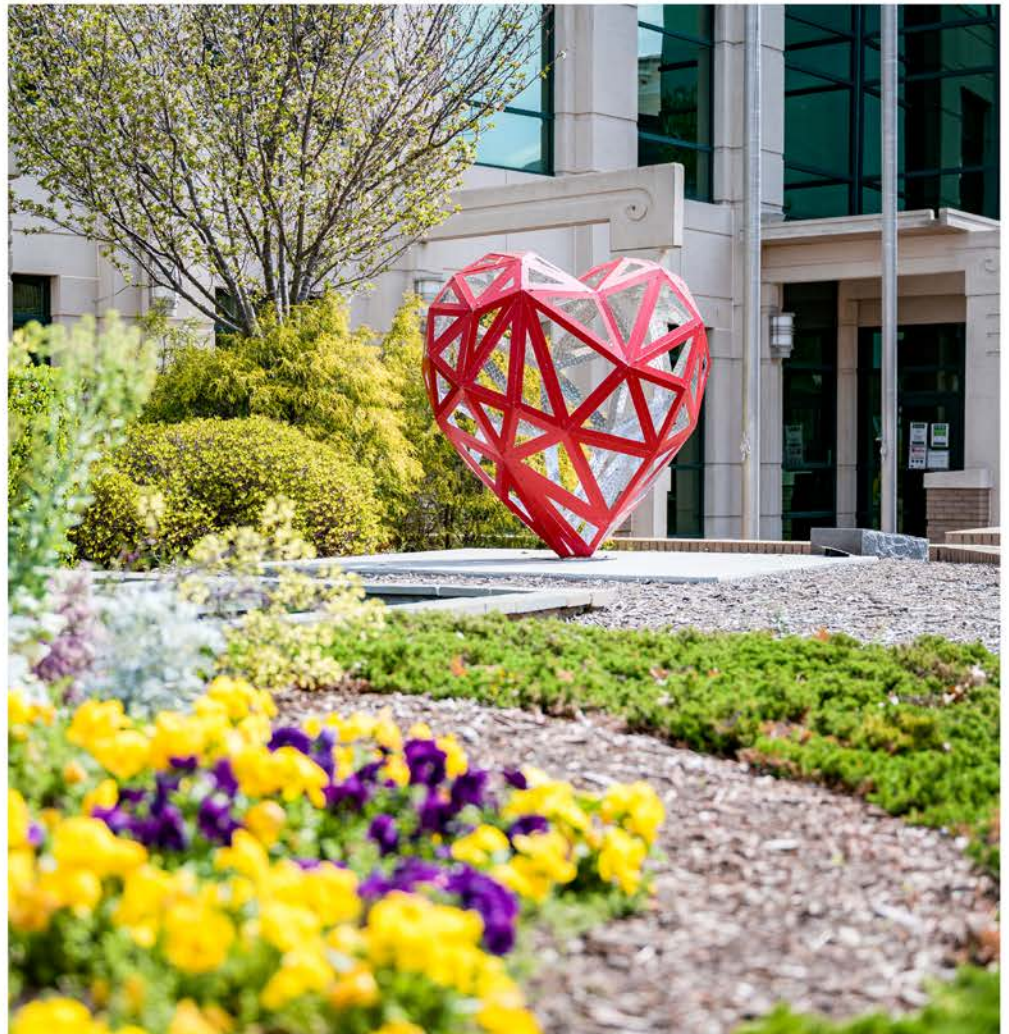




# Popular Annual Financial Report

Year Ended June 30, 2022



*Find yourself in good company®*

# CONTENTS

|                           |    |
|---------------------------|----|
| City Council & Districts  | 04 |
| Our Community             | 06 |
| FY 2022 Financial Results | 08 |
| Net Position              | 10 |
| Sources of City Funds     | 12 |
| Uses of City Funds        | 13 |
| Property Tax Breakdown    | 14 |
| Capital Improvements      | 15 |
| American Rescue Plan Act  | 16 |
| Understanding City Debt   | 17 |
| General Government        | 19 |
| Community Development     | 20 |
| Public Safety             | 23 |
| Public Works              | 24 |
| Recreation & Parks        | 27 |



The Government Finance Officers Association of the United States and Canada (GFOA) presented a **Distinguished Budget Presentation Award** to the City of Greenville, North Carolina for its biennial budget for fiscal year July 1, 2020–June 30, 2021, a **Certificate of Achievement for Excellence in Financial Reporting** for its commitment to financial transparency for fiscal year ended June 30, 2021, and an **Award for Outstanding Achievement in Popular Annual Financial Reporting** for its Annual Financial Report for the fiscal year ended June 30, 2021.

The City’s Budget documentation and Annual Comprehensive Financial Reports can be accessed through GreenvilleNC.gov.



## FINANCIAL TRANSPARENCY TOOL

Access real-time financial information any time online through the Financial Transparency Tool at greenvillenc.gov.

200 West Fifth Street • Greenville, NC 27858  
 (252) 329-2489 • GreenvilleNC.gov

# OVERVIEW

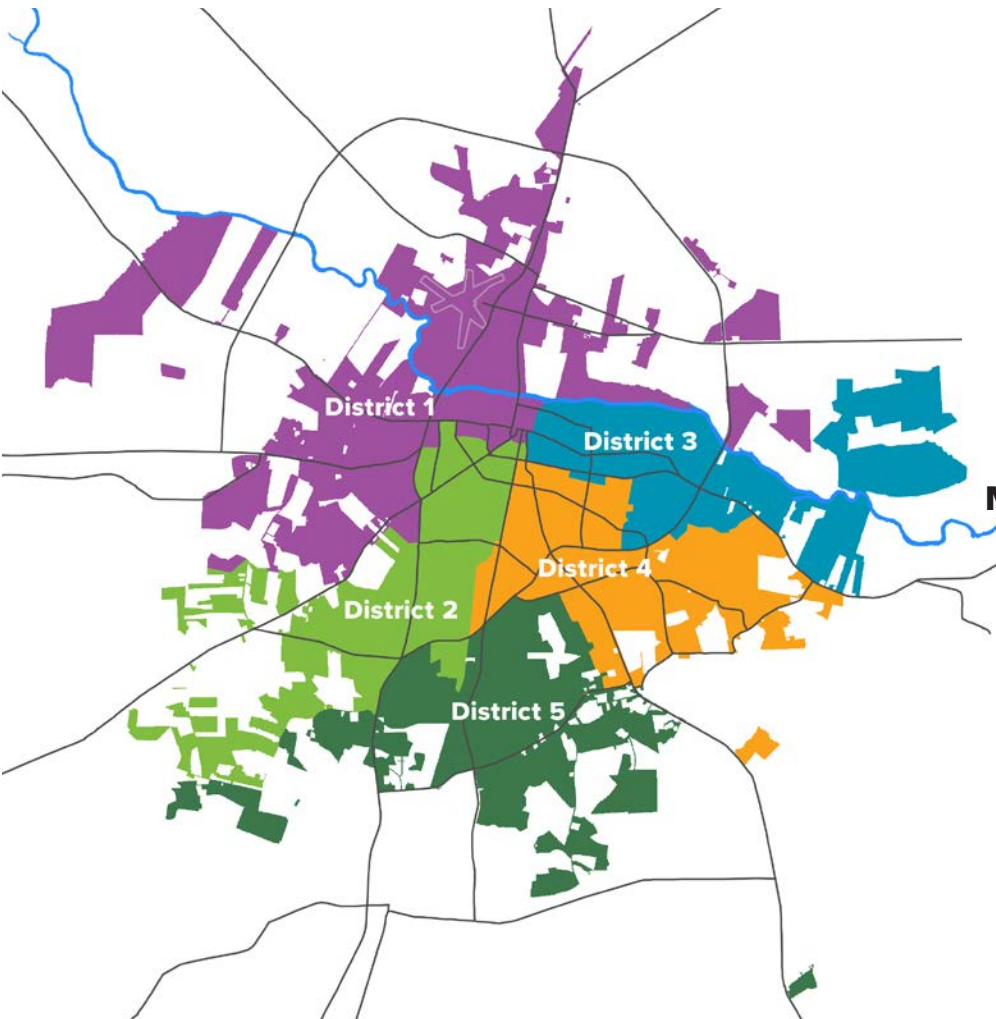


The City of Greenville financial cycle begins on July 1 and ends on June 30. During this time frame, two major processes take place: the Annual Operating and Capital Budget process and the Annual Audit. The 2022 Popular Annual Financial Report (PAFR) provides an overview of the City’s financial results and is intended to increase awareness throughout the community of the City’s financial operations.

The financial information is obtained from the audited financial statements in the City’s 2022 Annual Comprehensive Financial Report (ACFR). The PAFR is not required to present the same level of detail as the ACFR and, therefore, may not fully conform to generally accepted accounting principles (GAAP).

This report highlights the overall financial condition and trends of the City. The 2022 ACFR is audited by Cherry Beckaert LLP and has received an unmodified or “clean” audit opinion. This report may be viewed on the City’s website, located at [GreenvilleNC.gov](http://GreenvilleNC.gov).

# CITY COUNCIL & DISTRICTS



**P.J. Connelly**  
Mayor



**Rose Glover**  
Mayor Pro-Tem  
District 2



**Monica Daniels**  
District 1



**Marion Blackburn**  
District 3



**Rick Smiley**  
District 4



**Les Robinson**  
District 5



**Will Bell**  
at-Large



# MANAGER'S MESSAGE

I am pleased to present, on behalf of the City Council and the Management of the City of Greenville, the City's Popular Annual Financial Report (PAFR) for the fiscal year ending June 30, 2022. Provided in this report are the financial highlights from the previous fiscal year. The City provides significant financial detail through the Annual Comprehensive Financial Report (ACFR) which is available to you on the City's website, [greenvillenc.gov](http://greenvillenc.gov).

Analyzing financial statements can be challenging, especially for those who do not do so on a regular basis. The PAFR is designed to address that issue by providing a summary of the City's financial position in a user-friendly format. The PAFR is intended to be a supplement to the ACFR, not a replacement.

The City of Greenville prides itself on its comprehensive and quality services, all provided while maintaining a sound financial position. It is an important part of our financial mission at the City of Greenville to be transparent in providing you with complete information on the finances of our programs. We hope that you find it to be informative and understandable. As you review this PAFR, please feel free to share any questions, concerns, or recommendations you may have with us.



A handwritten signature in black ink that reads "Ann E. Wall". The signature is fluid and cursive.

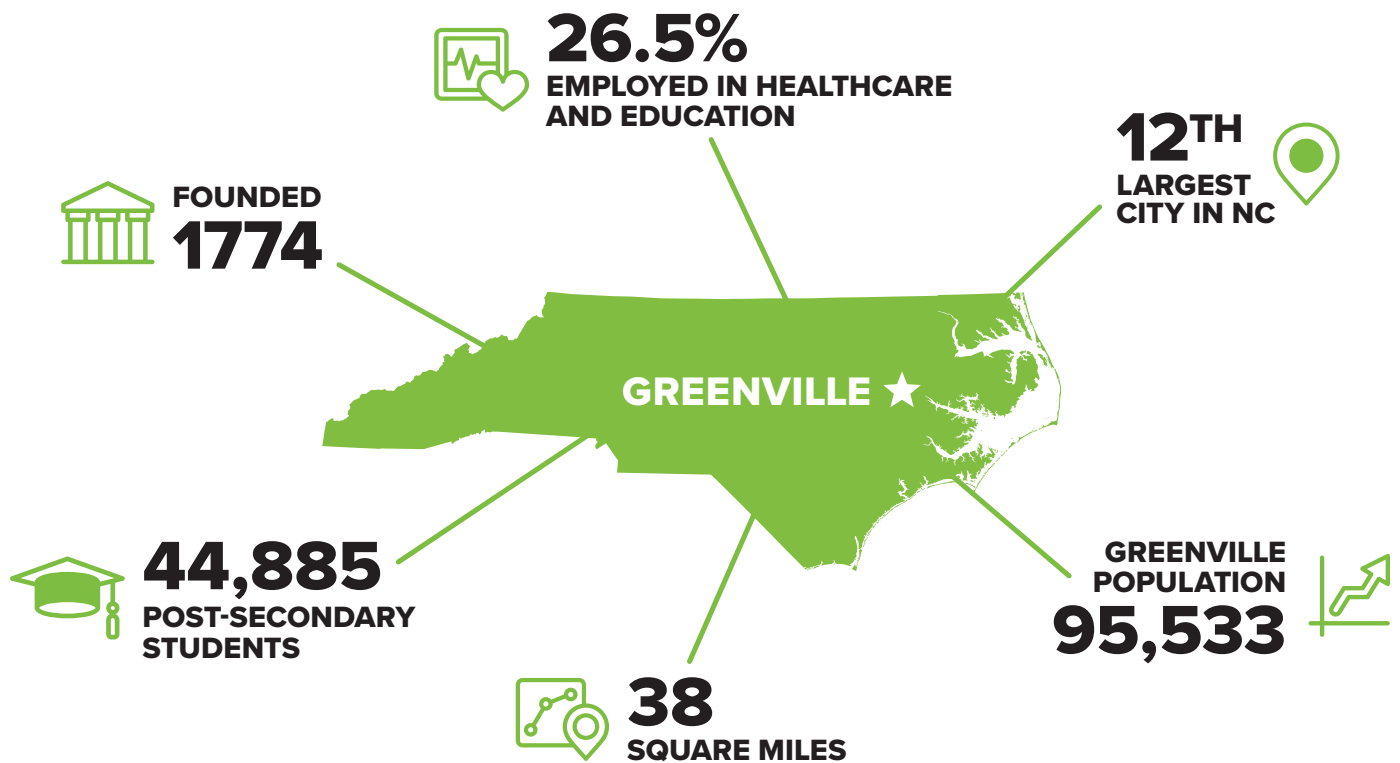
Ann E. Wall  
City Manager



*Find yourself in good company<sup>®</sup>*

# OUR COMMUNITY

Anchored by East Carolina University and Vidant Health (Uni-Med), Greenville is the medical, education, retail and entertainment hub of Eastern North Carolina. It's also the 11th largest city in North Carolina, with a population of 95,533 (2022 U.S. Census Estimate). The City of Greenville is ranked in the top ten of the nation's "Best Small Places For Business And Careers" by Forbes Magazine, top ten of the nation's "Micro Cities of the Future" by Financial Times, and top 100 of the nation's "Best Communities for Young People" by America's Promise Alliance. Reasons for Greenville's accolades include a business friendly atmosphere, low cost of living and an educated population (37.8% City residents over the age of 25 have a bachelor's degree or higher, based on 2021 U.S. Census estimates).



## MAJOR EMPLOYERS

In a community where healthcare and education thrive, it is no surprise that the Greenville's top employers would be from one of those fields. ECU Health, which includes the East Carolina Heart Institute and the James and Connie Maynard Children's Hospital, leads the way in jobs. Here is a look at the number of employees at a few of the city's major employers:





# FY 2022 FINANCIAL RESULTS

## GOVERNMENTAL ACTIVITIES

The Governmental activities section in the City's financial statements includes programs normally supported by taxes and allocations/grants from federal and state governments. Governmental revenue sources cover various services including public safety (Fire, Police, and Emergency Communications), public infrastructure (Planning, Inspections, and roadways) and the Parks, Recreation and Community Development Departments, as well as general government administration (Human Resources, Information Technology, and Finance). Governmental activities also include special revenue activities, such as grants, and capital project activities, such as road resurfacing, that support general infrastructure activities across the city.

Increases or decreases in net position may serve as a useful indicator of whether the City's financial position is improving or declining. The City's revenue increased slightly over the prior year. Increases in operating expenditures year over year are due to continued investment in capital improvement projects.

### BALANCE SHEET

A balance sheet provides a snapshot of what the City owns (assets) and owes (liabilities). Net position represents the City's investment in the assets it uses in providing services to its citizens.

| <b>BALANCE SHEET</b>      | <b>FY 2020</b>        | <b>FY 2021</b>        | <b>FY 2022</b>        |
|---------------------------|-----------------------|-----------------------|-----------------------|
| Assets                    | \$ 305,267,761        | \$ 320,414,980        | \$ 362,366,256        |
| Deferred Outflows         | \$ 12,545,683         | \$ 53,394,621         | \$ 47,800,561         |
| Liabilities               | – \$ 119,214,268      | – \$ 167,772,372      | – \$ 145,788,009      |
| Deferred Inflows          | – \$ 5,621,727        | – \$ 4,583,583        | – \$ 51,242,836       |
| <b>Total Net Position</b> | <b>\$ 192,977,446</b> | <b>\$ 201,453,646</b> | <b>\$ 213,135,972</b> |

| <b>INCOME STATEMENT</b>       | <b>FY 2020</b>      | <b>FY 2021</b>      | <b>FY 2022</b>       |
|-------------------------------|---------------------|---------------------|----------------------|
| Revenues                      | \$ 92,230,304       | \$ 99,570,425       | \$ 103,459,850       |
| Transfers                     | \$ 6,114,174        | \$ 6,500,141        | \$ 6,865,032         |
| Expenditures                  | – \$ 92,319,121     | – \$ 97,594,369     | – \$ 98,642,556      |
| <b>Change In Net Position</b> | <b>\$ 6,025,358</b> | <b>\$ 8,476,197</b> | <b>\$ 11,682,326</b> |



## ENTERPRISE ACTIVITIES

Enterprise activities rely mostly on fees charged to customers for services rendered, with subsidies often being covered by general governmental funds. The City maintains four operations as Enterprise activities not counting Greenville Utilities Commission. Those operations include Public Transportation (Transit), Stormwater Utility, Enterprise Capital Projects, and Sanitation. *Note: Financial results presented below do not include Greenville Utilities Commission.*

| <b>BALANCE SHEET</b>      | <b>FY 2020</b>       | <b>FY 2021</b>       | <b>FY 2022</b>       |
|---------------------------|----------------------|----------------------|----------------------|
| Assets                    | \$ 58,305,803        | \$ 61,724,921        | \$ 67,011,682        |
| Deferred Outflows         | \$ 1,111,519         | \$ 4,826,443         | \$ 4,462,389         |
| Liabilities               | – \$ 37,967,056      | – \$ 42,692,556      | – \$ 35,989,003      |
| Deferred Inflows          | – \$ 485,215         | – \$ 413,522         | – \$ 4,705,377       |
| <b>Total Net Position</b> | <b>\$ 20,965,051</b> | <b>\$ 23,445,286</b> | <b>\$ 30,779,691</b> |

| <b>INCOME STATEMENT</b>       | <b>FY 2020</b>      | <b>FY 2021</b>      | <b>FY 2022</b>      |
|-------------------------------|---------------------|---------------------|---------------------|
| Revenues                      | \$ 17,050,931       | \$ 17,533,728       | \$ 22,442,348       |
| Transfers                     | \$ 540,551          | \$ 0                | \$ 4,319            |
| Expenditures                  | – \$ 13,580,196     | – \$ 14,481,312     | – \$ 15,112,262     |
| <b>Change In Net Position</b> | <b>\$ 4,011,286</b> | <b>\$ 3,052,416</b> | <b>\$ 7,334,405</b> |

### INCOME STATEMENT

An income statement provides a summary of amounts received (revenues) and amounts spent (expenditures). The difference between revenue and expenditures shows the City's net position.

# FY 2022 NET POSITION

When revenue exceeds expenditures, the City's net position improves. Approximately 88% of the City's net position is invested in capital infrastructure. Another 10% is restricted for specific projects. The remaining 2% is available for investment back into the community.

## NET POSITION

A positive net position means the City's assets exceed liabilities and a negative net position means the City's liabilities exceed its assets.

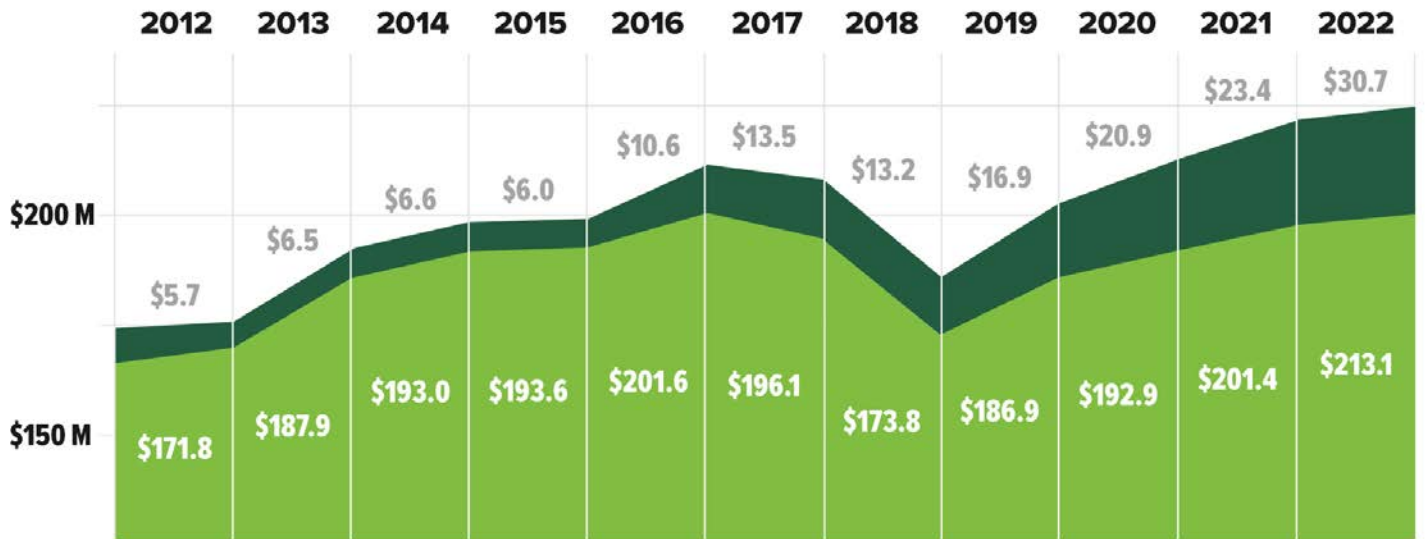
## FY 2022 BALANCE SHEET

|                           | <b>Governmental<br/>Activities</b> | <b>Enterprise<br/>Activities</b> | <b>Total</b>          |
|---------------------------|------------------------------------|----------------------------------|-----------------------|
| Assets                    | \$ 362,366,256                     | \$ 67,011,682                    | \$ 429,377,938        |
| Deferred Outflows         | \$ 47,800,561                      | \$ 4,462,389                     | \$ 52,262,950         |
| Liabilities               | – \$ 145,788,009                   | – \$ 35,989,003                  | – \$ 81,777,012       |
| Deferred Inflows          | – \$ 51,242,836                    | – \$ 4,705,377                   | – \$ 55,948,213       |
| <b>Total Net Position</b> | <b>\$ 213,135,972</b>              | <b>\$ 30,779,691</b>             | <b>\$ 243,915,663</b> |

## FY 2022 INCOME STATEMENT

|                               | <b>Governmental<br/>Activities</b> | <b>Enterprise<br/>Activities</b> | <b>Total</b>         |
|-------------------------------|------------------------------------|----------------------------------|----------------------|
| Revenues                      | \$ 103,459,850                     | \$ 22,442,348                    | \$ 125,902,198       |
| Transfers                     | \$ 6,865,032                       | \$ 4,319                         | \$ 6,869,351         |
| Expenditures                  | – \$ 98,642,556                    | – \$ 15,112,262                  | – \$ 113,754,818     |
| <b>Change in Net Position</b> | <b>\$ 11,682,326</b>               | <b>\$ 7,334,405</b>              | <b>\$ 19,016,731</b> |

## NET POSITION BY FISCAL YEAR



| GOVERNMENTAL FUNDS         |                       |
|----------------------------|-----------------------|
| Beginning Net Position     | \$ 201,453,646        |
| Revenues                   | \$ 110,324,882        |
| Expenditures               | – \$ 98,642,556       |
| <b>Ending Net Position</b> | <b>\$ 213,135,972</b> |

| ENTERPRISE FUNDS           |                      |
|----------------------------|----------------------|
| Beginning Net Position     | \$ 23,445,286        |
| Revenues                   | \$ 22,446,667        |
| Expenditures               | – \$ 15,112,262      |
| <b>Ending Net Position</b> | <b>\$ 30,779,691</b> |

# SOURCES OF CITY FUNDS

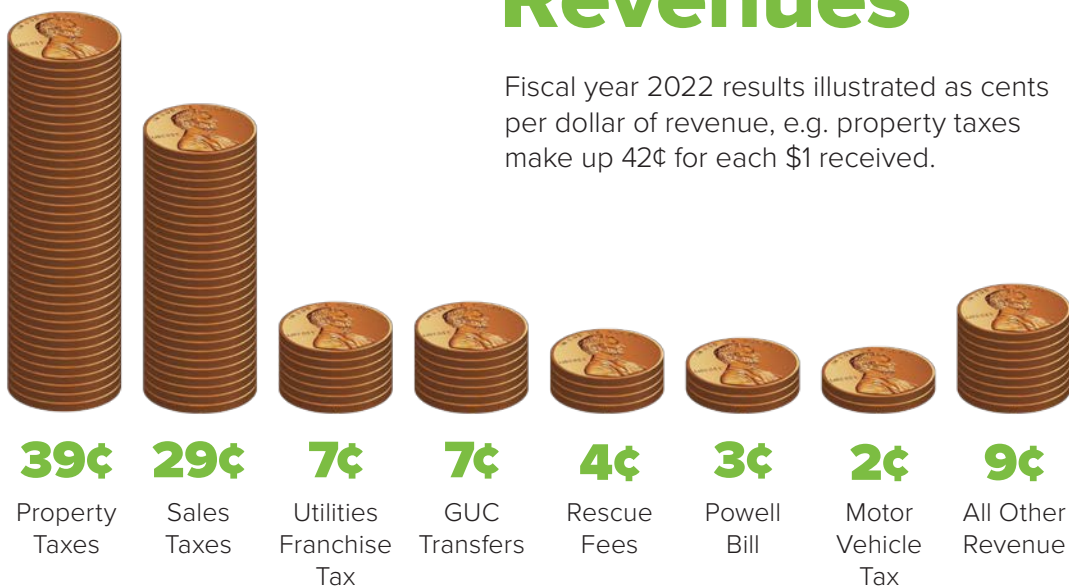
## GENERAL FUND REVENUES

The General Fund is the City’s primary operating fund. It accounts for all financial resources of the general government, with the exception of those required to be accounted for in different funds, such as business type activities. The major sources of revenues for the General Fund are property tax, sales tax, utilities franchise tax, licenses, permits and fees, Greenville Utilities Commission transfer-in, rescue fees, investment earnings, and Powell Bill – State Allocation. The largest tax revenues of the City are property taxes and sales taxes. These taxes predominately fund basic government services including Recreation and Parks and Public Safety.

| Revenue Sources         | 2019 Actual          | 2020 Actual          | 2021 Actual          | 2022 Actual          |
|-------------------------|----------------------|----------------------|----------------------|----------------------|
| Property taxes          | \$ 33,178,636        | \$ 34,254,841        | \$ 36,994,088        | \$ 37,411,270        |
| Sales taxes             | \$ 20,736,258        | \$ 20,465,509        | \$ 24,555,869        | \$ 27,248,610        |
| Motor vehicle tax       | \$ 1,560,990         | \$ 1,573,790         | \$ 1,713,410         | \$ 1,675,940         |
| Utilities franchise tax | \$ 6,948,992         | \$ 6,832,754         | \$ 6,612,710         | \$ 6,625,128         |
| GUC transfers           | \$ 6,717,814         | \$ 6,654,003         | \$ 6,565,310         | \$ 6,729,351         |
| Powell Bill             | \$ 2,180,451         | \$ 2,174,190         | \$ 2,124,843         | \$ 2,390,611         |
| Rescue fees             | \$ 3,394,942         | \$ 3,182,772         | \$ 2,447,717         | \$ 3,990,787         |
| All other sources       | \$ 10,120,498        | \$ 11,768,693        | \$ 8,023,747         | \$ 8,851,556         |
| <b>Total</b>            | <b>\$ 84,838,581</b> | <b>\$ 86,906,552</b> | <b>\$ 89,037,694</b> | <b>\$ 94,923,253</b> |

## Revenues

Fiscal year 2022 results illustrated as cents per dollar of revenue, e.g. property taxes make up 42¢ for each \$1 received.



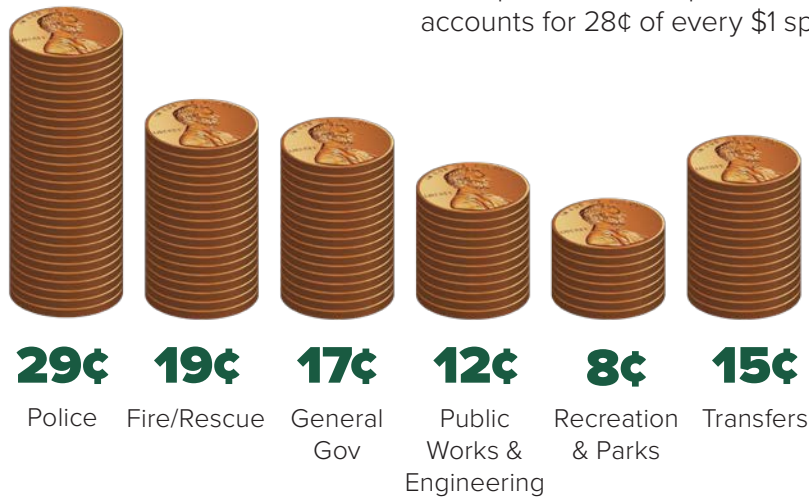
# USES OF CITY FUNDS

## GENERAL FUND EXPENDITURES

Each year, the City adopts its annual operating budget, which allocates limited dollars to the highest priorities as determined during the City Council planning retreat held each January. The General Fund is financed primarily by property and sales tax revenues, and supports core services such as public safety. The City provides many services to our citizens with the majority of our General Fund being dedicated to Public Safety, which includes Police at 29% and Fire/Rescue at 19% of the general government budget in fiscal year 2022.

## Expenditures

Fiscal year 2022 results illustrated as cents per dollar of expenditure, e.g. Police accounts for 28¢ of every \$1 spent.



| Department Expenditures  | 2019 Actual          | 2020 Actual          | 2021 Actual          | 2022 Actual          |
|--------------------------|----------------------|----------------------|----------------------|----------------------|
| Police                   | \$ 25,132,600        | \$ 25,997,198        | \$ 24,713,879        | \$ 26,725,915        |
| Fire/Rescue              | \$ 14,891,338        | \$ 13,722,127        | \$ 15,041,336        | \$ 17,195,047        |
| Public Works             | \$ 9,500,256         | \$ 10,242,327        | \$ 10,128,832        | \$ 10,610,120        |
| Recreation & Parks       | \$ 7,014,081         | \$ 7,184,198         | \$ 6,541,020         | \$ 7,227,702         |
| General government       | \$ 14,878,773        | \$ 14,782,046        | \$ 14,637,228        | \$ 15,770,529        |
| Transfers to other funds | \$ 12,366,880        | \$ 13,167,334        | \$ 17,065,754        | \$ 14,062,474        |
| <b>Total</b>             | <b>\$ 83,783,920</b> | <b>\$ 85,095,230</b> | <b>\$ 88,128,049</b> | <b>\$ 91,591,787</b> |

# PROPERTY TAX BREAKDOWN

In order for the City of Greenville to provide the many services it does for citizens, it needs to generate revenue. One of the main sources of revenue is Ad Valorem (or property) tax. With the property tax rate being 49.45¢ per \$100 of valuation for FY 2022, it made up 39% of the total General Fund revenues.

Property tax revenues consist of real property values, personal property values, motor vehicles, and public service companies. For FY 2022, the valuation estimate provided by the Pitt County Tax Office was \$ 8,065,226,832. This represented a 3.12% increase in tax values from the previous year.



Property tax obligation for home values at the fiscal year 2022 tax rate of 49.45¢ per \$100 of valuation:

**\$ 100,000 – \$ 494.50**  
**\$ 150,000 – \$ 741.75**  
**\$ 200,000 – \$ 989.00**



**39¢**

Property Taxes

## HISTORY OF GREENVILLE PROPERTY TAX RATES



# CAPITAL IMPROVEMENTS

Infrastructure, transportation, parks, and buildings are the foundation of a community. The projects in the Capital Improvement Plan (CIP) provide basic necessities and amenities that make Greenville a desirable place to live, work, and play. To maintain a low tax rate, it is imperative that the CIP projects reflect the City’s Strategic Plan and that capital improvements are incorporated in the annual operating budget. A few of the projects included in the City’s CIP include street resurfacing, park and greenway development, information system infrastructure, as well as facility renovations and repairs.



## FY 2022 CAPITAL IMPROVEMENTS

|            |                                       |                      |
|------------|---------------------------------------|----------------------|
| <b>33%</b> | <b>BUILD Grant</b>                    | <b>\$ 24,000,000</b> |
| <b>30%</b> | <b>Public Works &amp; Engineering</b> | <b>\$ 22,095,786</b> |
| <b>19%</b> | <b>Recreation &amp; Parks</b>         | <b>\$ 14,118,623</b> |
| <b>18%</b> | <b>Other Projects</b>                 | <b>\$ 13,127,089</b> |

**Total Capital Improvements** \$ 73,341,498



# AMERICAN RESCUE PLAN ACT



The Coronavirus State and Local Fiscal Recovery Funds (SLFRF) program, a part of the American Rescue Plan Act (ARPA), delivers \$350 billion to state, local, and Tribal governments across the country to support their response to and recovery from the COVID-19 public health emergency. The City of Greenville was awarded \$ 24,689,311 in ARPA funding in 2021, and held numerous public input sessions and workshops to determine the best way to allocate funds to meet the needs of Greenville’s citizens. The City Council voted on and approved the following ARPA funding allocations, with projects scheduled to begin no later than December 2024 and completed by December 2026:

## **ARPA Funding Allocations**

|   |                      |
|---|----------------------|
| 4th Street Reconstruction               | \$ 5,238,850         |
| BUILD Grant Match                       | \$ 3,600,000         |
| Dream Park Community Center Renovations | \$ 1,000,000         |
| Greenfield Terrace Improvements         | \$ 1,000,000         |
| Public Works Drainage Pipe Replacement  | \$ 3,375,000         |
| Employee Premium Pay                    | \$ 305,000           |
| Small Business & Non-Profit Assistance  | \$ 500,000           |
| Town Common Bulkhead Replacement        | \$ 9,670,461         |
| <b>Total</b>                            | <b>\$ 24,689,311</b> |



# UNDERSTANDING CITY DEBT

The City is subject to the Municipal Finance Law of North Carolina, which limits the amount of net bonded debt the City may have outstanding to eight percent (8%) of the appraised value of property subject to taxation. According to Pitt County Tax Assessor records, the City of Greenville has an estimated assessed value of \$ 8,065,226,832 for fiscal year 2022. Based on this, the City’s legal debt capacity is approximately \$ 645.2 million. This capacity covers the debt that would be subject to property taxation.

The following is a summary of the City’s outstanding debt as of June 30, 2022:



## FY 2022 TOTAL OUTSTANDING DEBT

|                                  |                      |
|----------------------------------|----------------------|
| <b>38% Note Payable</b>          | <b>\$ 27,035,714</b> |
| <b>26% General Obligations</b>   | <b>\$ 18,775,000</b> |
| <b>32% Installment Purchases</b> | <b>\$ 22,475,469</b> |
| <b>4% Special Revenue</b>        | <b>\$ 3,114,642</b>  |
| <b>Total Outstanding Debt</b>    | <b>\$ 71,400,825</b> |

## GENERAL OBLIGATION BOND RATINGS

**MOODY'S** **Aa2**  
(very strong)

**S&P Global** **AA**  
(very strong)

Bond ratings are a measure of a municipality’s credit risk and ability to pay its debt. The stronger the bond rating, the lower the credit risk. The City’s bond ratings reflect a very strong ability to fulfill its debt obligations on an annual basis.



# GENERAL GOVERNMENT

Home to more than 95,500 people, the City of Greenville provides a multitude of services for residents, businesses, and visitors through its Police, Fire/Rescue, Public Works, Recreation and Parks, and Community Development Departments and a committed and knowledgeable staff in its internal departments and divisions.

More than 700 City employees played a part in the City's successes during Fiscal Year 2022, and the City's commitment to inclusiveness and transparency in all areas of government is evident throughout the 38 square miles that make up Greenville.

Effective communication regarding City information and events is also a daily priority, and the City has reached thousands through its outreach methods of the City website, social media pages, cable television channel, mobile application, electronic newsletter, and various printed publications.



Some additional highlights from FY 2022 include:

- More than 5,000 applications for employment were processed and reviewed; over 1,000 job interest cards were received by the Human Resources Department.
- 9,199 payments were processed by the Collections Division.
- More than \$25 million was awarded to the City through federal, state, and local grants during Fiscal Year 2021–2022.



*Find yourself in good company®*

# PLANNING & DEVELOPMENT



The mission of the Planning & Development Services Department is to administer and implement policies, programs, and services authorized by the Greenville City Council that shapes the physical environment of the city and provide services to the citizens of Greenville in a professional manner.

The Planning & Development Services Department is comprised of five divisions: Code Enforcement, Planning, Housing, Inspections, and Administration. Each play a vital role in guiding the growth and development of our city while also preserving its historic and natural features.

| <b>Permits</b>               | <b>FY 2020</b> | <b>FY 2021</b> | <b>FY 2022</b> |
|------------------------------|----------------|----------------|----------------|
| Total permits issued         | 6,968          | 7,523          | 8,713          |
| Total value new construction | \$ 298M        | \$ 393M        | \$ 334M        |
| Inspections performed        | 14,202         | 16,410         | 17,674         |
| Commercial plan reviews      | 305            | 437            | 521            |
| Residential plan reviews     | 629            | 712            | 790            |

| <b>Community Revitalization*</b> | <b>FY 2020</b> | <b>FY 2021</b> | <b>FY 2022</b> |
|----------------------------------|----------------|----------------|----------------|
| Downpayment assistance           | \$ 31,750      | \$ 144,845     | \$ 80,000      |
| Owner-occupied rehabilitation    | \$ 989,015     | \$ 828,362     | \$ 396,027     |

\*These numbers reflect actual expenditures for these categories in community revitalization during FY 2020, FY 2021, and FY 2022.







# PUBLIC SAFETY

The Greenville Police Department and Fire/Rescue Department exist to make our community a better place to live by responding to a wide range of emergencies and other calls for service. Each is committed to creating a safer city for residents, businesses, and visitors through a community-oriented approach.

The Greenville Police Department is a nationally accredited law enforcement agency that provides a full range of high quality law enforcement services through a departmental philosophy of community-oriented policing. The department continuously implements 21st Century policing techniques and methods to protect and serve the expanding community with 204 sworn employees and more than 50 civilian employees in the various bureaus, divisions, and units.

Greenville Fire/Rescue is an internationally accredited department serving the community through fire suppression and emergency medical services. Mission: At Greenville Fire/Rescue, we are a team of compassionate professionals committed to serving the diverse needs of our community through high-quality and timely response to a full range of emergency services, outreach and prevention programs.



| <b>Greenville Police</b>   | <b>FY 2020</b> | <b>FY 2021</b> | <b>FY 2022</b> |
|----------------------------|----------------|----------------|----------------|
| Sworn Police Officers      | 200            | 204            | 202            |
| Number of calls dispatched | 41,453         | 41,805         | 36,264         |
| Crimes against person      | 440            | 433            | 410            |
| Crimes against property    | 2,891          | 2,615          | 2,087          |
| Reportable crashes         | 4,273          | 4,030          | 4,173          |

| <b>Greenville Fire/Rescue</b>   | <b>FY 2020</b> | <b>FY 2021</b> | <b>FY 2022</b> |
|---------------------------------|----------------|----------------|----------------|
| Full-time Fire/Rescue positions | 173            | 173            | 173            |
| Number of calls dispatched      | 17,557         | 18,363         | 19,246         |
| Fire incidents                  | 303            | 325            | 339            |
| EMS incidents                   | 14,448         | 15,150         | 15,607         |
| Technical rescue incidents      | 44             | 37             | 68             |
| Hazardous material incidents    | 109            | 99             | 153            |
| Inspections completed           | 3,061          | 4,012          | 3,190          |

# PUBLIC WORKS & ENGINEERING

The Public Works Department is committed to providing our community with the highest level of customer service through a cost-effective, efficient, and environmentally responsible operation. The department aims to preserve and maintain the City’s infrastructure and natural resources for the benefit of all.

Public Works is composed of the following divisions: Engineering, Street Maintenance, Greenville Area Transit (GREAT), Sanitation, Fleet Maintenance, Building & Grounds, and Administration. Through these divisions, the Public Works Department provides a host of services to our citizens. In addition to the many services provided directly to the citizens, Public Works develops and maintains the City’s Facility Improvement Program (FIP), Vehicle Replacement Fund (VRF), and various Capital projects. The department is dedicated to maintaining and enhancing the infrastructure and appearance of the city.

During the third quarter of 2019, a standalone Engineering Department was formed to more effectively meet the current and future infrastructure needs of the city. The Engineering Department manages traffic services, transportation planning, land development, stormwater management, capital projects, and asset management.

| <b>Refuse Collection</b>           | <b>FY 2020</b> | <b>FY 2021</b> | <b>FY 2022</b> |
|------------------------------------|----------------|----------------|----------------|
| Weekly routes                      | 20             | 24             | 44             |
| Refuse collected (tons)            | 33,630         | 29,522         | 39,063         |
| Recycling routes                   | 20             | 20             | 20             |
| Recyclables collected (tons)       | 2,822          | 2,511          | 1,994          |
| <b>Roadways</b>                    |                |                |                |
| Total paved lane miles maintained  | 716            | 741            | 742            |
| Bridges maintained                 | 10             | 10             | 10             |
| <b>Fleet Maintenance</b>           |                |                |                |
| Work orders                        | 5,556          | 6,841          | 10,968         |
| <b>Building &amp; Grounds</b>      |                |                |                |
| Trees planted                      | 20             | 100            | 50             |
| <b>Stormwater</b>                  |                |                |                |
| Total miles of drainage pipe       | 222            | 229            | 225            |
| Structures (basins, culverts, etc) | 17,666         | 15,396         | 15,431         |









# RECREATION & PARKS

The Recreation and Parks Department provides a variety of athletic, recreational, and arts and crafts activities for all ages and special populations. The department maintains 37 parks and recreational facilities, including numerous gymnasiums, recreation and community centers, swimming pools, tennis courts, a soccer complex, softball and baseball fields, playgrounds, a greenway, as well as the Town Common and Greenville Toyota Amphitheater, River Park North, Bradford Creek Public Golf Course, the Aquatics & Fitness Center, the Extreme Park, River Birch Tennis Center, and Wildwood Park.

The department’s dedication to inclusiveness and a willingness to think “outside of the box” also make it unique and help to enhance Greenville’s overall quality of life while providing more reasoning for why Greenville was voted the state’s only “Sportstown USA” by Sports Illustrated.



| <b>Recreation &amp; Parks</b> | <b>FY 2020</b> | <b>FY 2021</b> | <b>FY 2022</b> |
|-------------------------------|----------------|----------------|----------------|
| Parks and sites               | 33             | 37             | 37             |
| Total park acres              | 1,589          | 1,634          | 1,622          |
| Total Greenway Miles          | 10.5           | 11             | 11             |
| Programs & camps offered      | 332            | 427            | 1,134          |
| Total program participants    | 7,452          | 9,100          | 17,100         |

## **City Maintained Recreational Facilities**

|                           |    |    |    |
|---------------------------|----|----|----|
| Indoor and outdoor pools  | 2  | 2  | 2  |
| Recreation centers        | 7  | 9  | 9  |
| Outdoor basketball courts | 1  | 1  | 1  |
| Outdoor tennis courts     | 18 | 18 | 18 |
| Playgrounds               | 19 | 19 | 19 |
| Diamond fields            | 16 | 17 | 17 |
| Rectangular fields        | 6  | 7  | 7  |
| Other athletic fields     | 2  | 3  | 3  |
| Picnic shelters           | 24 | 25 | 25 |
| Golf courses              | 1  | 1  | 1  |



*Find yourself in good company®*

City of Greenville, North Carolina  
200 W 5th Street • Greenville, NC 27858  
(252) 329-2489 • GreenvilleNC.gov