

## TABLE OF DETAILS

---

**Detail  
Number**

**Title**

---

**Basins, Pipes and Manholes Details**

---

610.01	Standard Catch Basin and Manhole Notes
610.02	Standard Brick Double Catch Basin (15" Thru 24" Pipe)
610.03	Standard Brick Double Catch Basin (30" Thru 36" Pipe) (2 Sheets)

## CATCH BASIN, DROP INLET, MANHOLE, & JUNCTION BOX STANDARD NOTES

1. All structures shall be constructed in accordance with the City of Greenville MSDD and all appropriate NCDOT Standards, including but not limited to the NCDOT Standard Roadway Drawings (latest edition) and the NCDOT Standard Specifications for Roads and Structures (latest edition). Concrete testing in accordance with NCDOT Specifications is required for all structural concrete installed within the right of way. This includes but is not limited to cast in place box culverts and top slabs for catch basins and junction boxes. Testing for top slabs on catch basins that do not extend beneath the roadway are exempt from the testing requirement.
2. All precast drainage structures to be located within the public right of way shall be stamped with the NCDOT approval stamp as specified in Section 1077 of the NCDOT Standard Specifications for Roads and Structures.
3. Oversized structures not depicted in NCDOT Standard Roadway Drawings shall be designed by Professional Engineer.
4. All castings shall be manufactured in the USA and indicated as such on the casting. Catch basin hoods shall be stamped "FLOWS TO RIVER".
5. Roll type catch basins will not be allowed.
6. Pipe penetrations into precast drainage structures shall be sealed on both the inside and outside of the structure. The annular opening shall be grouted the full 360 degrees of the pipe diameter using a combination of concrete or masonry block and Type M mortar. Mortar shall be struck flush with wall face and have a broomed finish. The pipe penetration shall be inspected prior to backfilling.



ENGINEERING DEPARTMENT  
Greenville, North Carolina 27834

**CITY OF GREENVILLE, N.C.**

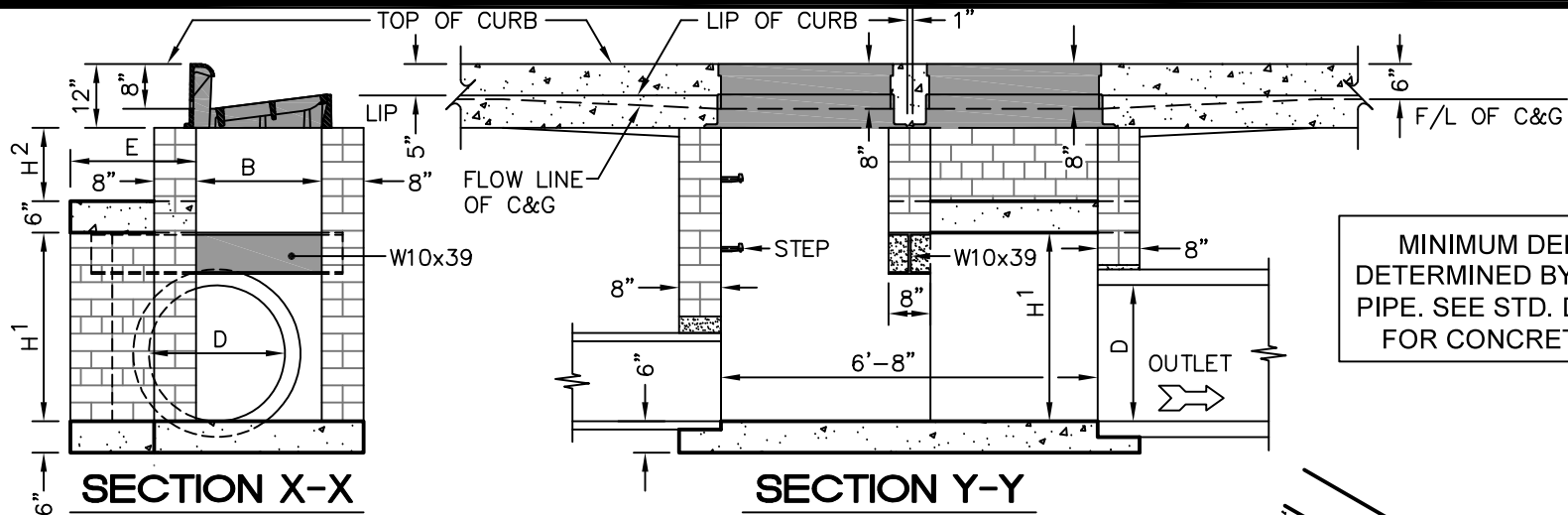
[www.greenvillenc.gov](http://www.greenvillenc.gov)

Rev.	Date	Description	Approved
1	9/1/23	APPROVAL	L. KIRBY

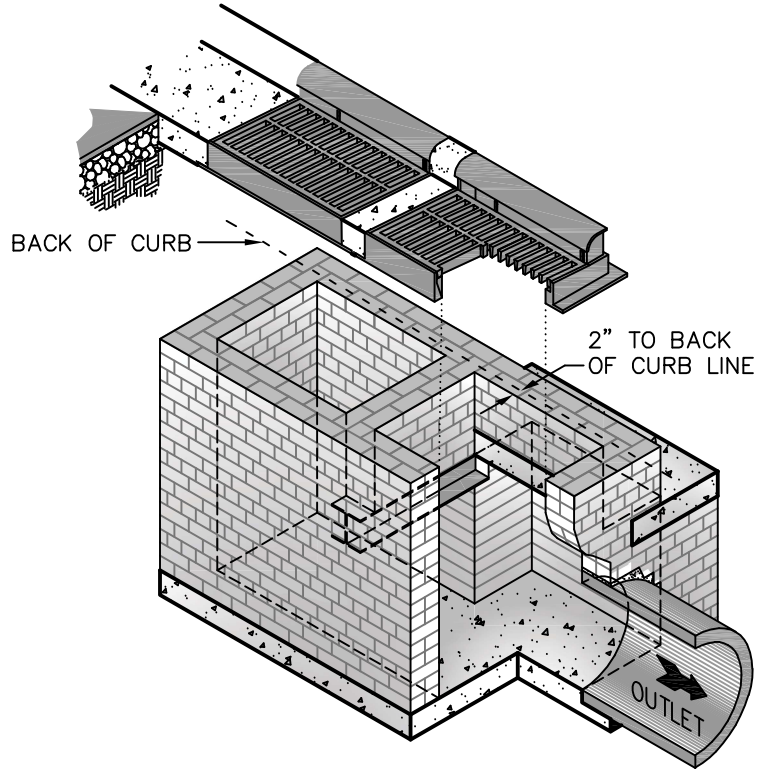
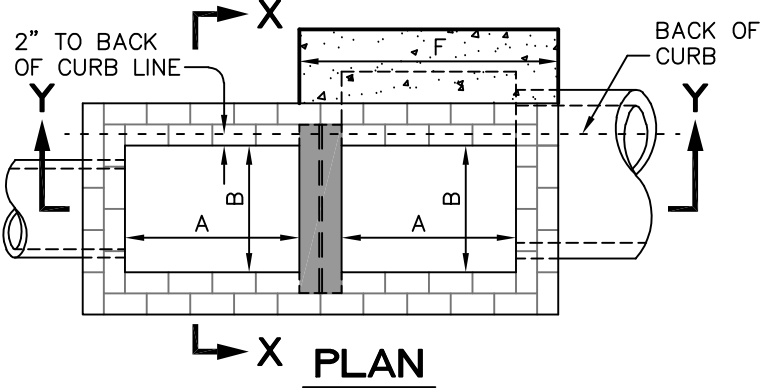
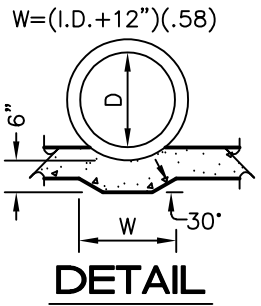
## STANDARD CATCH BASIN AND MANHOLE NOTES

Scale: not to scale	Sheet #: 1 of 1	Detail # <b>610.01</b>
------------------------	--------------------	---------------------------





MINIMUM DEPTH ( $H^1$ ) TO BE DETERMINED BY SIZE OF OUTLET PIPE. SEE STD. DETAIL NO. 610.02 FOR CONCRETE SLAB DETAIL



**NOTES:**

1. See sheet 2 of 2 for dimensions.
2. See Std. detail No. 610.01 for standard notes.



ENGINEERING DEPARTMENT  
Greenville, North Carolina 27834

**CITY OF GREENVILLE, N.C.**

www.greenvillenc.gov

Rev.	Date	Description	Approved
1	9/1/23	APPROVAL	L. KIRBY

**STANDARD BRICK DOUBLE CATCH BASIN (30" THRU 36" PIPE)**

Scale: not to scale	Sheet #: 1 of 2	Detail # <b>610.03</b>
------------------------	--------------------	---------------------------

## DIMENSIONS OF BOX AND PIPE

15" THRU 24" PIPE				
PIPE	SPAN	WIDTH	HEIGHT	W 10
D	A	B	MIN. H <sup>1</sup>	LENGTH
15"	3'-0"	2'-2"	2'-6"	2'-10"
18"	3'-0"	2'-2"	2'-10"	2'-10"
24"	3'-0"	2'-2"	3'-4"	2'-10"

## DIMENSIONS OF BOX AND PIPE

30" THRU 36" PIPE															
DIMENSIONS OF BOX & PIPE							COVER DIMENSIONS		REINFORCEMENT						
PIPE	SPAN	WIDTH	WIDTH	HEIGHT	HEIGHT	W 10			BARS-U	BARS-V	BARS-W		TOTAL		
D	A	B	C	MIN. H <sup>1</sup>	H <sup>2</sup>	LENGTH	E	F	Qty.	LENGTH	Qty.	LENGTH	Qty.	LENGTH	LBS.
30"	3'-0"	2'-2"	3'-4"	3'-2"	VAR.	4'-0"	1'-10"	4'-4"	4	1'-6"	3	4'-1"	3	4'-1"	45
36"	3'-0"	2'-2"	3'-10"	3'-8"	VAR.	4'-6"	2'-4"	4'-4"	4	2'-0"	4	4'-1"	3	4'-1"	49



ENGINEERING DEPARTMENT  
Greenville, North Carolina 27834

CITY OF GREENVILLE, N.C.

www.greenvillenc.gov

Rev.	Date	Description	Approved
1	9/1/23	APPROVAL	L. KIRBY

# STANDARD BRICK DOUBLE CATCH BASIN (30" THRU 36" PIPE)

Scale:	Sheet #:	Detail #:
not to scale	2 of 2	610.03